

UCB-BYU-UCLA
ZETAŞ-SAU
Joint Research

Project Name: CPT Liquefaction Investigations, Adapazari, Turkey

Location: Line Four: Cumhuriyet Caddesi

GPS Coordinates: 40.76464° N, 30.40897° E

Survey Coordinates (m): 32,368.12 N, 29,535.34 W

Test Number: SCPTU 4 - 22

Elevation (m): 29.511

Type of Cone: ELC10 SeisCFP No. 991232 (a.p. v.d. Berg)

Date: 10 July 2000 17:50

Sponsored by:

File Name: scptu 4 - 22.txt

Water Table Elevation (m): 28.56

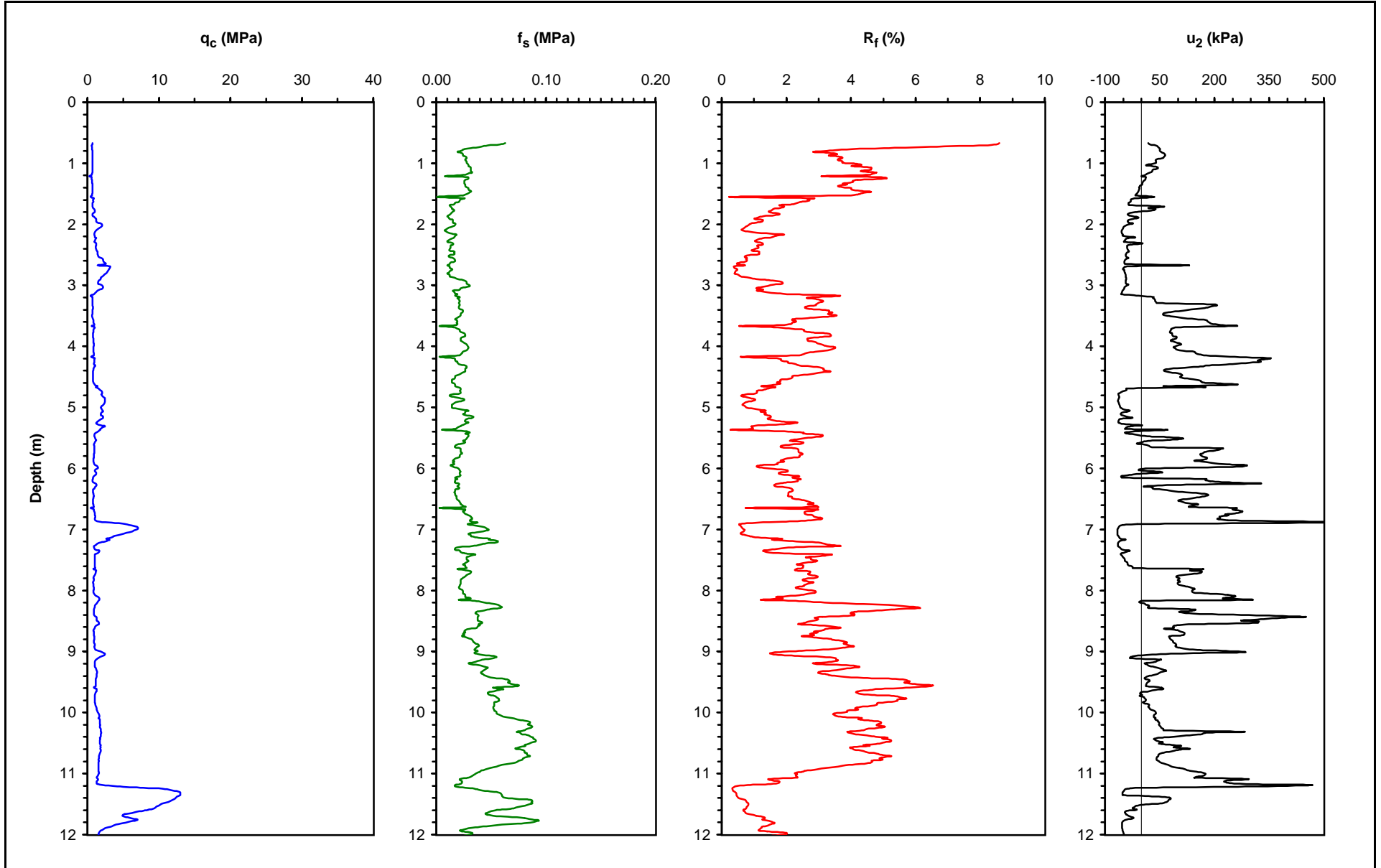
NSF, PEER

Operator: ZETAŞ (Zemin Teknolojisi, A. Ş.)

Responsible Engineers: T. Leslie Youd and Curt Christensen, BYU

Caltrans, CEC, PG&E

Notes: Pre-explored to a depth of 0.65 m to clear utilities.



UCB-BYU-UCLA
ZETAŞ-SAU
Joint Research

Project Name: CPT Liquefaction Investigations, Adapazari, Turkey

Location: Line Four: Cumhuriyet Caddesi

GPS Coordinates: 40.76464° N, 30.40897° E

Survey Coordinates (m): 32,368.12 N, 29,535.34 W

Test Number: SCPTU 4 - 22

Elevation (m): 29.511

Type of Cone: ELC10 SeisCFP No. 991232 (a.p. v.d. Berg)

Date: 10 July 2000 17:50

Sponsored by:

File Name: scptu 4 - 22.txt

Water Table Elevation (m): 28.561

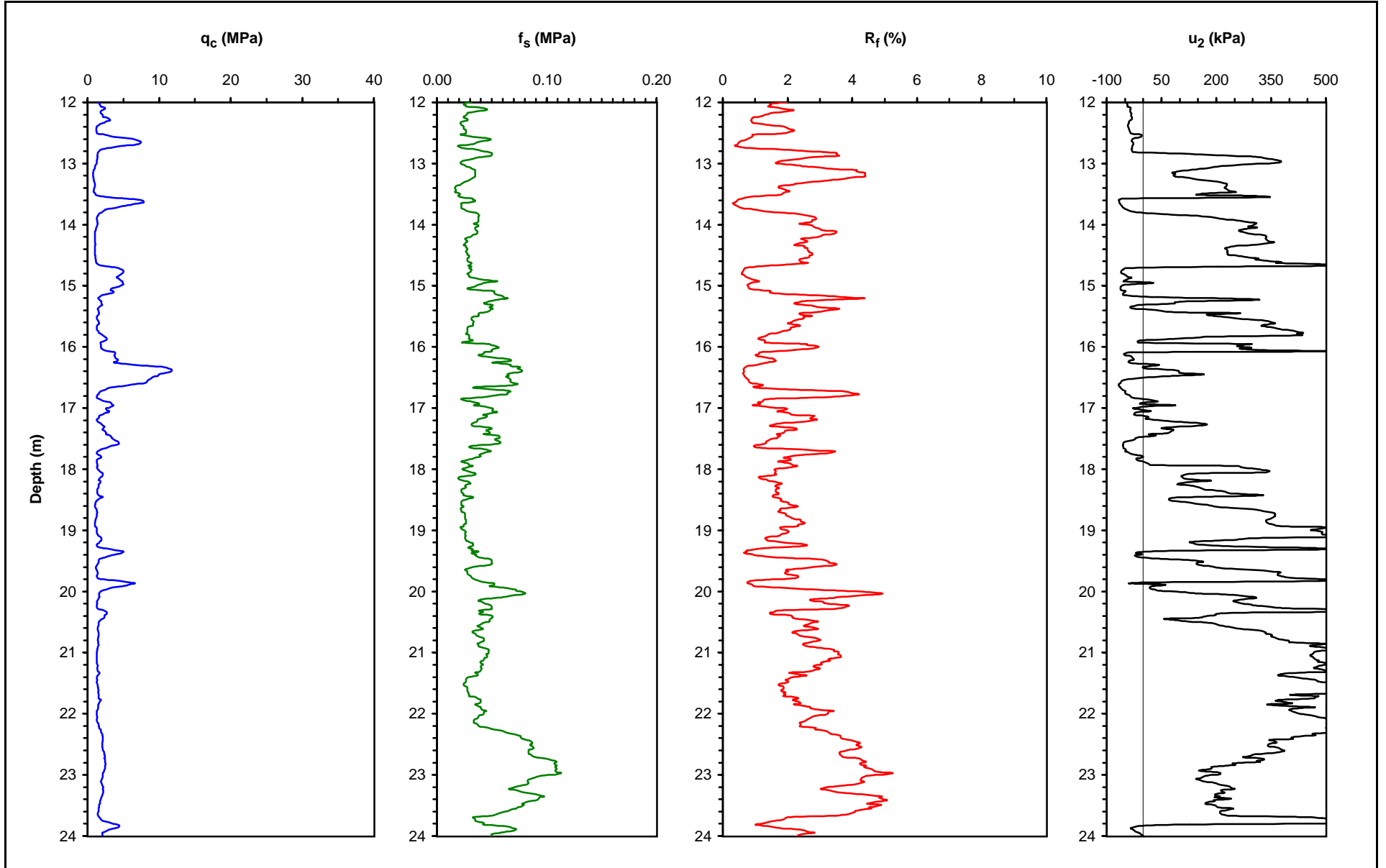
NSF, PEER

Operator: ZETAŞ (Zemin Teknolojisi, A. Ş.)

Responsible Engineers: T. Leslie Youd and Curt Christensen, BYU

Caltrans, CEC, PG&E

Notes: Pre-explored to a depth of 0.65 m to clear utilities.



UCB-BYU-UCLA
ZETAŞ-SAU
Joint Research

Project Name: CPT Liquefaction Investigations, Adapazari, Turkey

Page: 3 of 3

Location: Line Four: Cumhuriyet Caddesi

GPS Coordinates: 40.76464° N, 30.40897° E

Survey Coordinates (m): 32,368.12 N, 29,535.34 W

Test Number: SCPTU 4 - 22

Elevation (m): 29.511

Type of Cone: ELC10 SeisCFP No. 991232 (a.p. v.d. Berg)

Date: 10 July 2000 17:50

Sponsored by:

File Name: scptu 4 - 22.txt

Water Table Elevation (m): 28.561

NSF, PEER

Operator: ZETAŞ (Zemin Teknolojisi, A. Ş.)

Responsible Engineers: T. Leslie Youd and Curt Christensen, BYU

Caltrans, CEC, PG&E

Notes: Pre-explored to a depth of 0.65 m to clear utilities.

