

UCB-BYU-UCLA
ZETAŞ-SAU
Joint Research

Project Name: CPT Liquefaction Investigations, Adapazari, Turkey

Location: Line Four: Kol Sokak

GPS Coordinates: 40.77449° N, 30.40637° E

Test Number: CPTU 4 - 17

Type of Cone: ELC10 SeisCFP No. 991232 (a.p. v.d. Berg)

Sponsored by:

File Name: cptu 4 - 17.txt

NSF, PEER

Operator: ZETAŞ (Zemin Teknolojisi, A. Ş.)

Caltrans, CEC, PG&E

Notes: Pre-explored to a depth of 0.75 m to clear utilities.

Page: 1 of 3

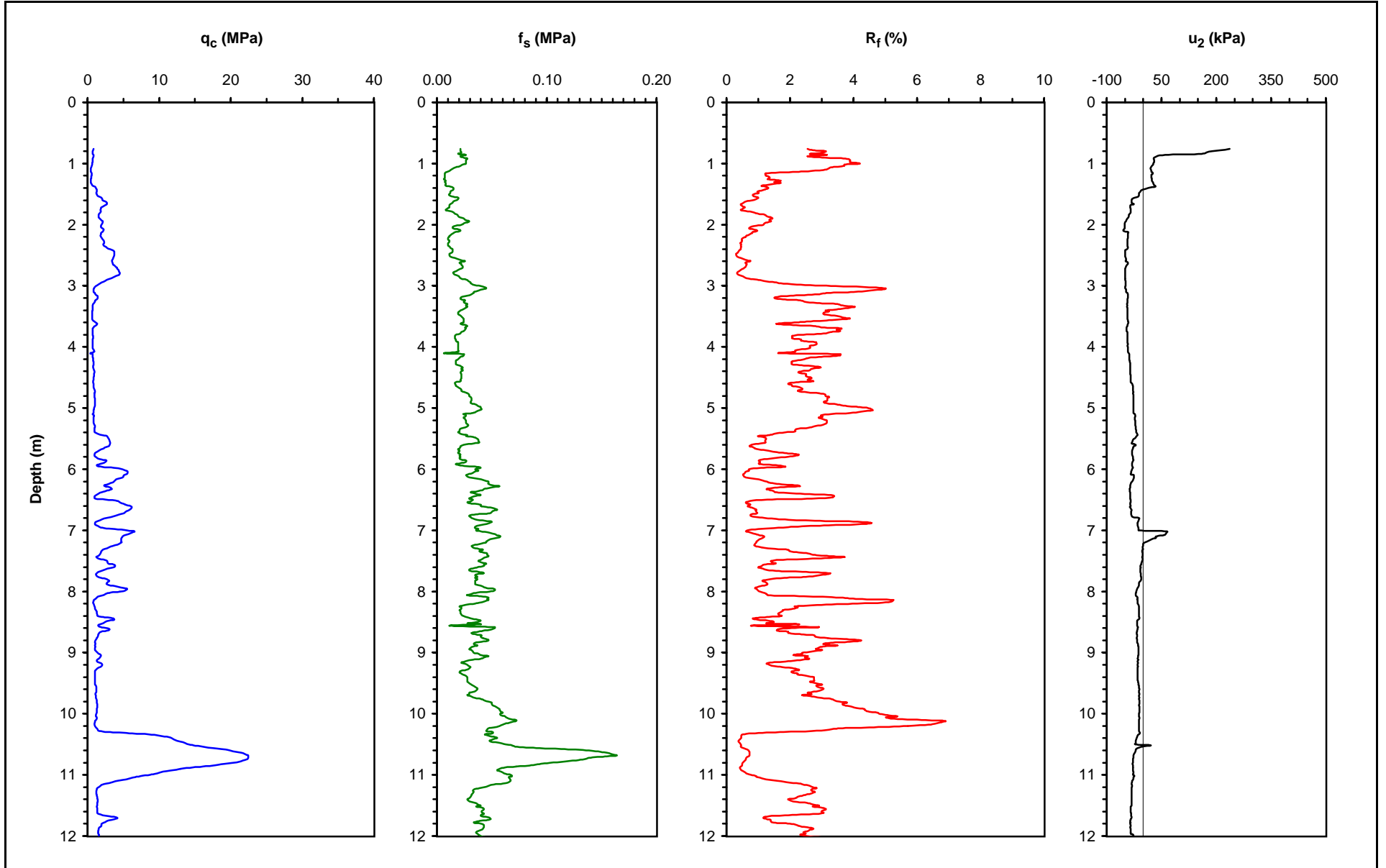
Survey Coordinates (m): 33,334.87 N, 29,969.24 W

Elevation (m): 29.527

Date: 10 July 2000 11:36

Water Table Elevation (m): 29.48

Responsible Engineers: T. Leslie Youd and Curt Christensen, BYU



UCB-BYU-UCLA
ZETAŞ-SAU
Joint Research

Project Name: CPT Liquefaction Investigations, Adapazari, Turkey

Location: Line Four: Kol Sokak

GPS Coordinates: 40.77449° N, 30.40637° E

Survey Coordinates (m): 33,334.87 N, 29,969.24 W

Test Number: CPTU 4 - 17

Elevation (m): 29.527

Type of Cone: ELC10 SeisCFP No. 991232 (a.p. v.d. Berg)

Date: 10 July 2000 11:36

Sponsored by:

File Name: cptu 4 - 17.txt

Water Table Elevation (m): 29.477

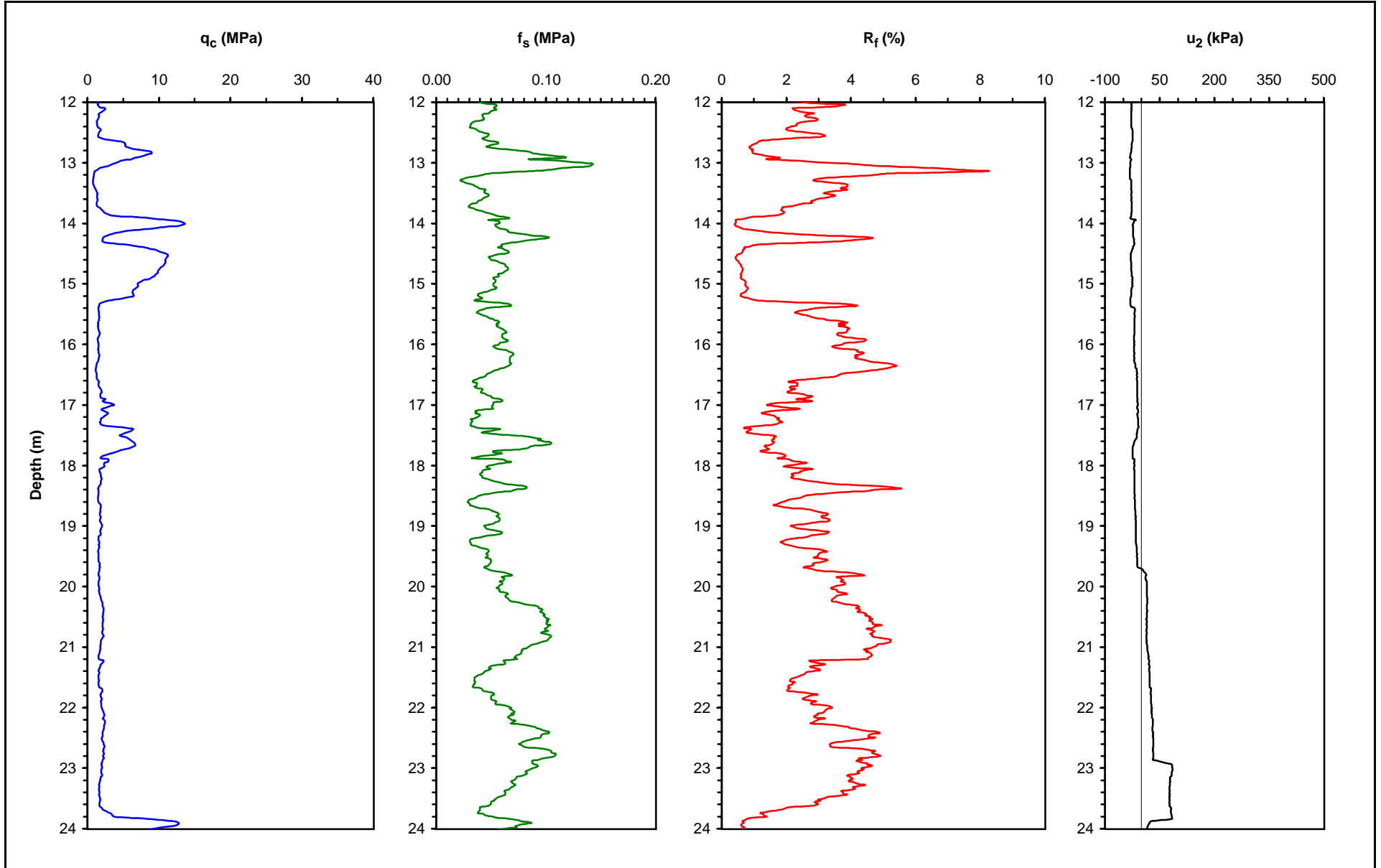
NSF, PEER

Operator: ZETAŞ (Zemin Teknolojisi, A. Ş.)

Responsible Engineers: T. Leslie Youd and Curt Christensen, BYU

Caltrans, CEC, PG&E

Notes: Pre-explored to a depth of 0.75 m to clear utilities.



UCB-BYU-UCLA
ZETAŞ-SAU
Joint Research

Project Name: CPT Liquefaction Investigations, Adapazari, Turkey

Page: 3 of 3

Location: Line Four: Kol Sokak

GPS Coordinates: 40.77449° N, 30.40637° E

Survey Coordinates (m): 33,334.87 N, 29,969.24 W

Test Number: CPTU 4 - 17

Elevation (m): 29.527

Type of Cone: ELC10 SeisCFP No. 991232 (a.p. v.d. Berg)

Date: 10 July 2000 11:36

Sponsored by:

File Name: cptu 4 - 17.txt

Water Table Elevation (m): 29.477

NSF, PEER

Operator: ZETAŞ (Zemin Teknolojisi, A. Ş.)

Responsible Engineers: T. Leslie Youd and Curt Christensen, BYU

Caltrans, CEC, PG&E

Notes: Pre-explored to a depth of 0.75 m to clear utilities.

