

UCB-BYU-UCLA
ZETAŞ-SAU
Joint Research

Project Name: CPT Liquefaction Investigations, Adapazari, Turkey

Location: Line Four: Kol Sokak

GPS Coordinates: 40.77612° N, 30.40458° E

Test Number: CPTU 4 - 13

Type of Cone: ELC10 CFP No. 000605 (a.p. v.d. Berg)

Sponsored by:

File Name: cptu 4 - 13.txt

NSF, PEER

Operator: ZETAŞ (Zemin Teknolojisi, A. Ş.)

Caltrans, CEC, PG&E

Notes: Pre-explored to a depth of 0.45 m to clear utilities and debris.

Page: 1 of 3

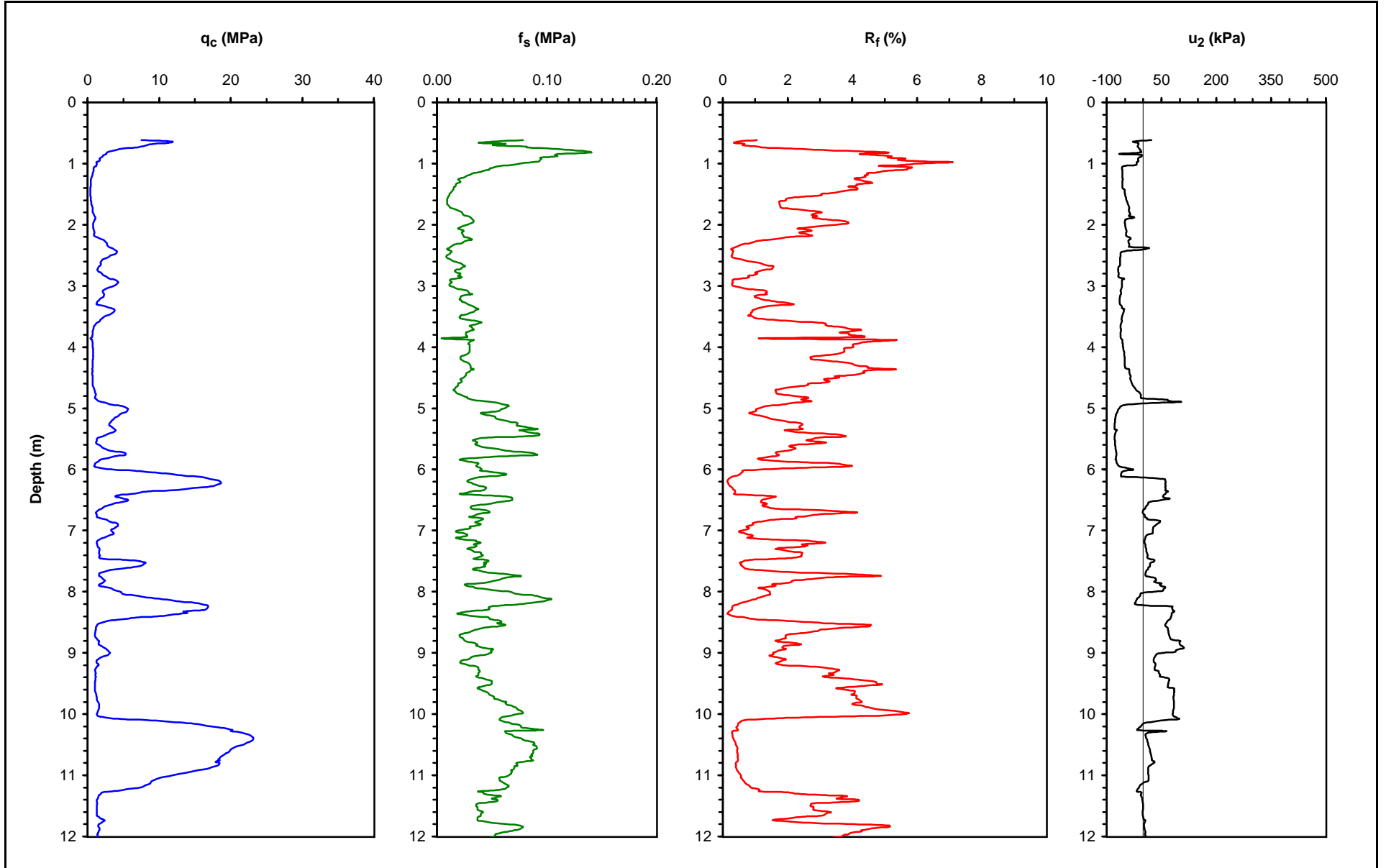
Survey Coordinates (m): 33,490.38 N, 30,067.07 W

Elevation (m): 29.246

Date: 10 July 2000 14:55

Water Table Elevation (m): 29.20

Responsible Engineers: T. Leslie Youd and Curt Christensen, BYU



UCB-BYU-UCLA
ZETAŞ-SAU
Joint Research

Project Name: CPT Liquefaction Investigations, Adapazari, Turkey

Location: Line Four: Kol Sokak

GPS Coordinates: 40.77612° N, 30.40458° E

Survey Coordinates (m): 33,490.38 N, 30,067.07 W

Test Number: CPTU 4 - 13

Elevation (m): 29.246

Type of Cone: ELC10 CFP No. 000605 (a.p. v.d. Berg)

Date: 10 July 2000 14:55

Sponsored by:

File Name: cptu 4 - 13.txt

Water Table Elevation (m): 29.196

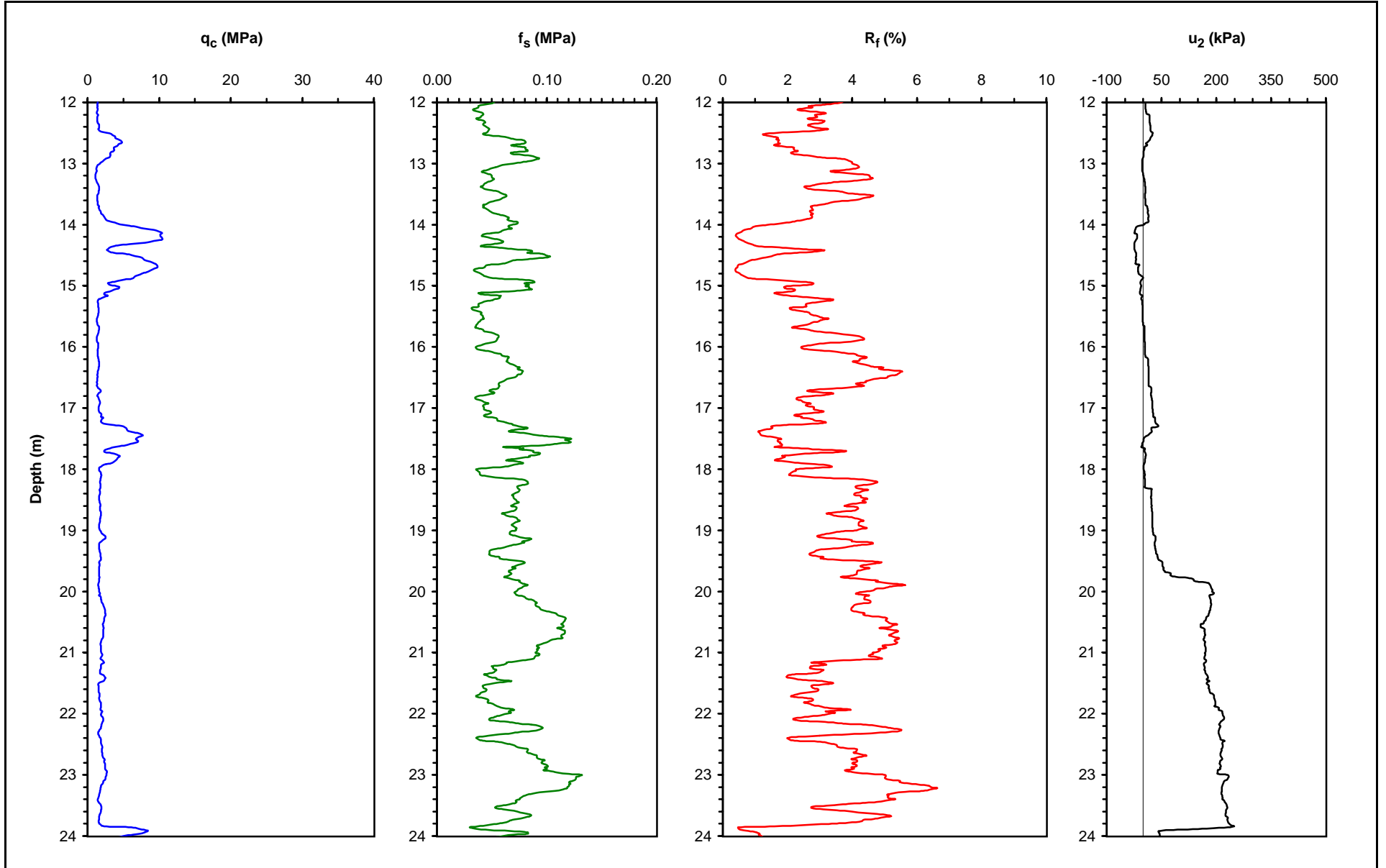
NSF, PEER

Operator: ZETAŞ (Zemin Teknolojisi, A. Ş.)

Responsible Engineers: T. Leslie Youd and Curt Christensen, BYU

Caltrans, CEC, PG&E

Notes: Pre-explored to a depth of 0.45 m to clear utilities and debris.



UCB-BYU-UCLA
ZETAŞ-SAU
Joint Research

Project Name: CPT Liquefaction Investigations, Adapazari, Turkey

Location: Line Four: Kol Sokak

GPS Coordinates: 40.77612° N, 30.40458° E

Test Number: CPTU 4 - 13

Type of Cone: ELC10 CFP No. 000605 (a.p. v.d. Berg)

Sponsored by:

File Name: cptu 4 - 13.txt

NSF, PEER

Operator: ZETAŞ (Zemin Teknolojisi, A. Ş.)

Caltrans, CEC, PG&E

Notes: Pre-explored to a depth of 0.45 m to clear utilities and debris.

Page: 3 of 3

Survey Coordinates (m): 33,490.38 N, 30,067.07 W

Elevation (m): 29.246

Date: 10 July 2000 14:55

Water Table Elevation (m): 29.196

Responsible Engineers: T. Leslie Youd and Curt Christensen, BYU

