

UCB-BYU-UCLA
ZETAŞ-SAU
Joint Research

Project Name: CPT Liquefaction Investigations, Adapazari, Turkey

Location: Line Four: Çesme Sokak (Near intersection with Küçük Hamam Caddesi)

GPS Coordinates: 40.78119° N, 30.40425° E

Survey Coordinates (m): 33,989.21 N, 30,402.67 W

Test Number: CPTU 4 - 08

Elevation (m): 29.737

Type of Cone: ELC10 CFP No. 000606 (a.p. v.d. Berg)

Date: 11 July 2000 9:40

Sponsored by:

File Name: cptu 4 - 08.txt

Water Table Elevation (m): 28.09

NSF, PEER

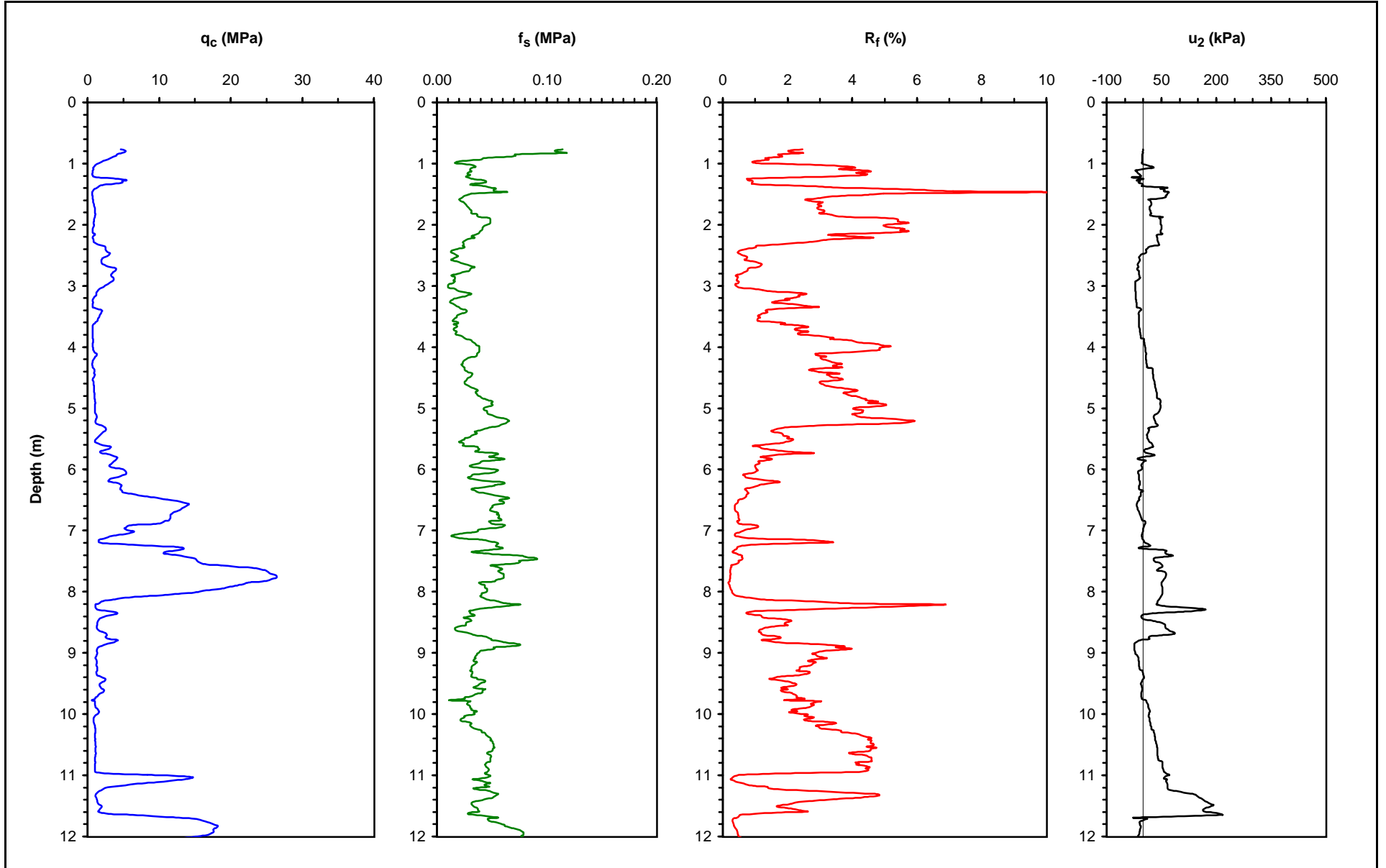
Operator: ZETAŞ (Zemin Teknolojisi, A. Ş.)

Responsible Engineers: T. Leslie Youd and Curt Christensen, BYU

Caltrans, CEC, PG&E

Notes: Pre-explored to a depth of 0.75 m to clear utilities.

Page: 1 of 3



UCB-BYU-UCLA
ZETAŞ-SAU
Joint Research

Project Name: CPT Liquefaction Investigations, Adapazari, Turkey

Page: 2 of 3

Location: Line Four: Çesme Sokak (Near intersection with Küçük Hamam Caddesi)

GPS Coordinates: 40.78119° N, 30.40425° E

Survey Coordinates (m): 33,989.21 N, 30,402.67 W

Test Number: CPTU 4 - 08

Elevation (m): 29.737

Type of Cone: ELC10 CFP No. 000606 (a.p. v.d. Berg)

Date: 11 July 2000 9:40

Sponsored by:

File Name: cptu 4 - 08.txt

Water Table Elevation (m): 28.087

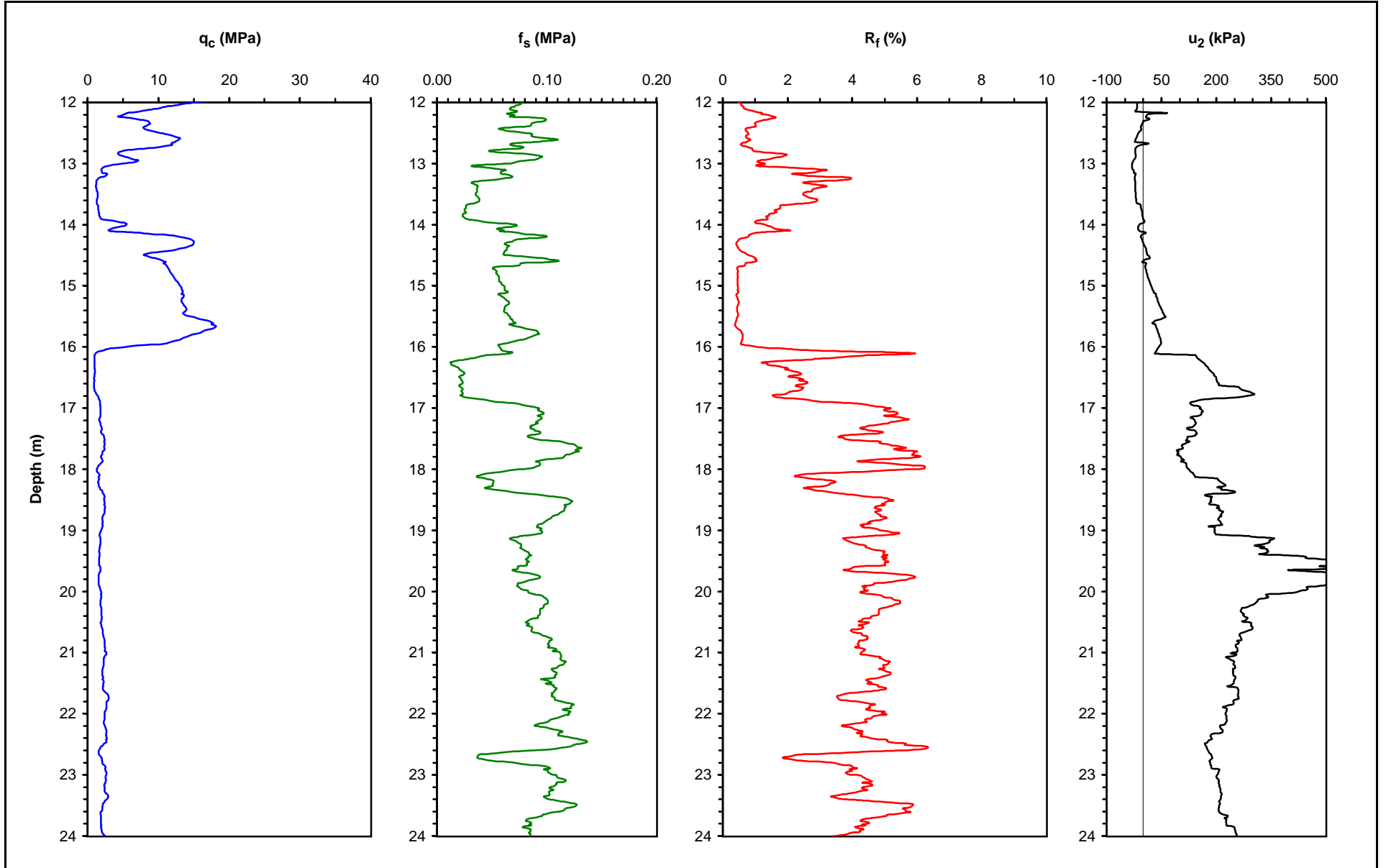
NSF, PEER

Operator: ZETAŞ (Zemin Teknolojisi, A. Ş.)

Responsible Engineers: T. Leslie Youd and Curt Christensen, BYU

Caltrans, CEC, PG&E

Notes: Pre-explored to a depth of 0.75 m to clear utilities.



UCB-BYU-UCLA
ZETAŞ-SAU
Joint Research

Project Name: CPT Liquefaction Investigations, Adapazari, Turkey

Page: 3 of 3

Location: Line Four: Çesme Sokak (Near intersection with Küçük Hamam Caddesi)

GPS Coordinates: 40.78119° N, 30.40425° E

Survey Coordinates (m): 33,989.21 N, 30,402.67 W

Test Number: CPTU 4 - 08

Elevation (m): 29.737

Type of Cone: ELC10 CFP No. 000606 (a.p. v.d. Berg)

Date: 11 July 2000 9:40

Sponsored by:

File Name: cptu 4 - 08.txt

Water Table Elevation (m): 28.087

NSF, PEER

Operator: ZETAŞ (Zemin Teknolojisi, A. Ş.)

Responsible Engineers: T. Leslie Youd and Curt Christensen, BYU

Caltrans, CEC, PG&E

Notes: Pre-explored to a depth of 0.75 m to clear utilities.

