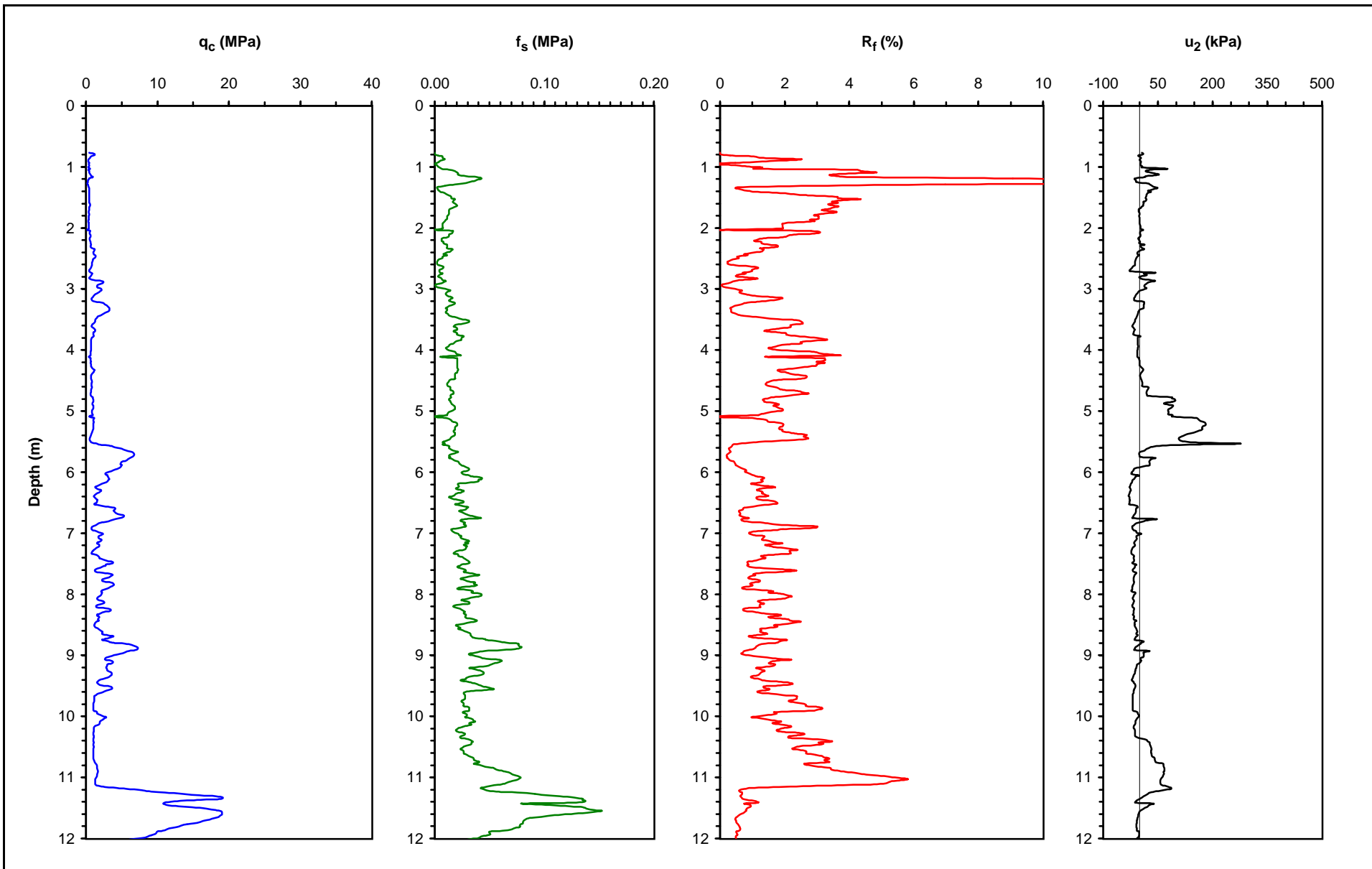
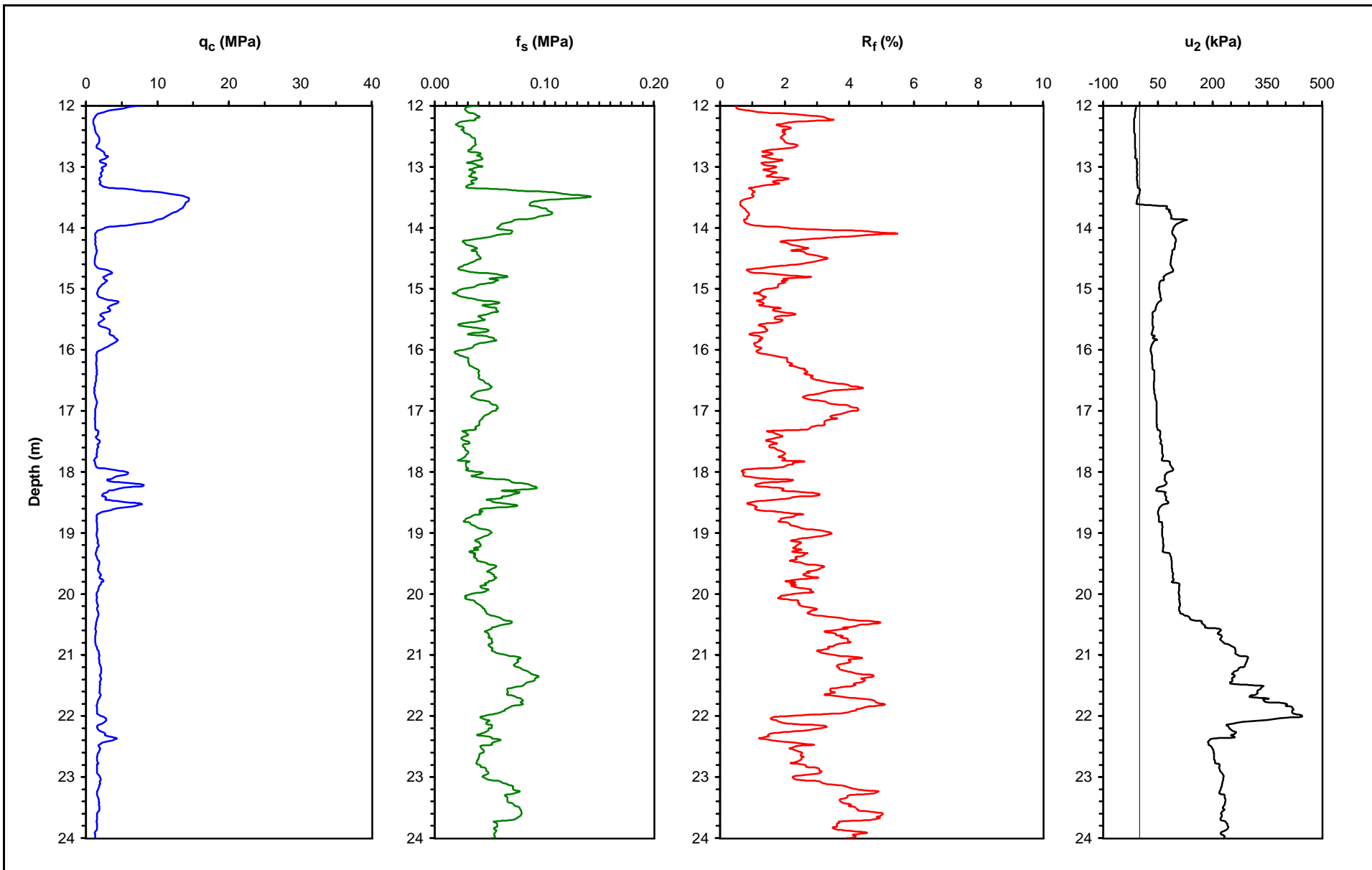


UCB-BYU-UCLA ZETAŞ-SAU Joint Research	Project Name: CPT Liquefaction Investigations, Adapazari, Turkey Location: Line Three: Venicami Sokak No. 34 GPS Coordinates: 40.77487° N, 30.40471° E	Survey Coordinates (m): 33,231.50 N, 29,980.15 W Elevation (m): 29.482	Page: 1 of 3
Sponsored by: NSF, PEER Caltrans, CEC, PG&E	Test Number: SCPTU 3 - 06 Type of Cone: ELC10 SeisCFP No. 991232 (a.p. v.d. Berg) File Name: scptu 3 - 06.txt Operator: ZETAŞ (Zemin Teknolojisi, A. Ş.)	Date: 07 July 2000 Water Table Elevation (m): 28.52 Responsible Engineers: T. L. Youd and C. Christensen, BYU	
	Notes: Pre-explored to a depth of 0.75 m to clear utilities.		



UCB-BYU-UCLA ZETAŞ-SAU Joint Research	Project Name: CPT Liquefaction Investigations, Adapazari, Turkey Location: Line Three: Venicami Sokak No. 34 GPS Coordinates: 40.77487° N, 30.40471° E	Page: 2 of 3 Survey Coordinates (m): 33,231.50 N, 29,980.15 W Elevation (m): 29.482
Sponsored by: NSF, PEER Caltrans, CEC, PG&E	Test Number: SCPTU 3 - 06 Type of Cone: ELC10 SeisCFP No. 991232 (a.p. v.d. Berg) File Name: scptu 3 - 06.txt Operator: ZETAŞ (Zemin Teknolojisi, A. Ş.)	Date: 07 July 2000 0:00 Water Table Elevation (m): 28.522 Responsible Engineers: T. L. Youd and C. Christensen, BYU
Notes: Pre-explored to a depth of 0.75 m to clear utilities.		



UCB-BYU-UCLA ZETAŞ-SAU Joint Research	Project Name: CPT Liquefaction Investigations, Adapazari, Turkey Location: Line Three: Venicami Sokak No. 34 GPS Coordinates: 40.77487° N, 30.40471° E	Page: 3 of 3 Survey Coordinates (m): 33,231.50 N, 29,980.15 W Elevation (m): 29.482
Sponsored by: NSF, PEER Caltrans, CEC, PG&E	Test Number: SCPTU 3 - 06 Type of Cone: ELC10 SeisCFP No. 991232 (a.p. v.d. Berg) File Name: scptu 3 - 06.txt Operator: ZETAŞ (Zemin Teknolojisi, A. Ş.)	Date: 07 July 2000 0:00 Water Table Elevation (m): 28.522 Responsible Engineers: T. L. Youd and C. Christensen, BYU
Notes: Pre-explored to a depth of 0.75 m to clear utilities.		

