

UCB-BYU-UCLA
ZETAŞ-SAU
Joint Research

Project Name: CPT Liquefaction Investigations, Adapazari, Turkey

Location: Line Three: Venicami Sokak

GPS Coordinates: 40.77522° N, 30.40665° E

Test Number: CPTU 3 - 03

Type of Cone: ELC10 CFP No. 000606 (a.p. v.d. Berg)

Sponsored by:

NSF, PEER

Caltrans, CEC, PG&E

File Name: cptu 3 - 03.txt

Operator: ZETAŞ (Zemin Teknolojisi, A. Ş.)

Notes: Pre-explored to a depth of 0.76 m to clear utilities and debris.

Survey Coordinates (m): 33,316.42 N, 29,833.89 W

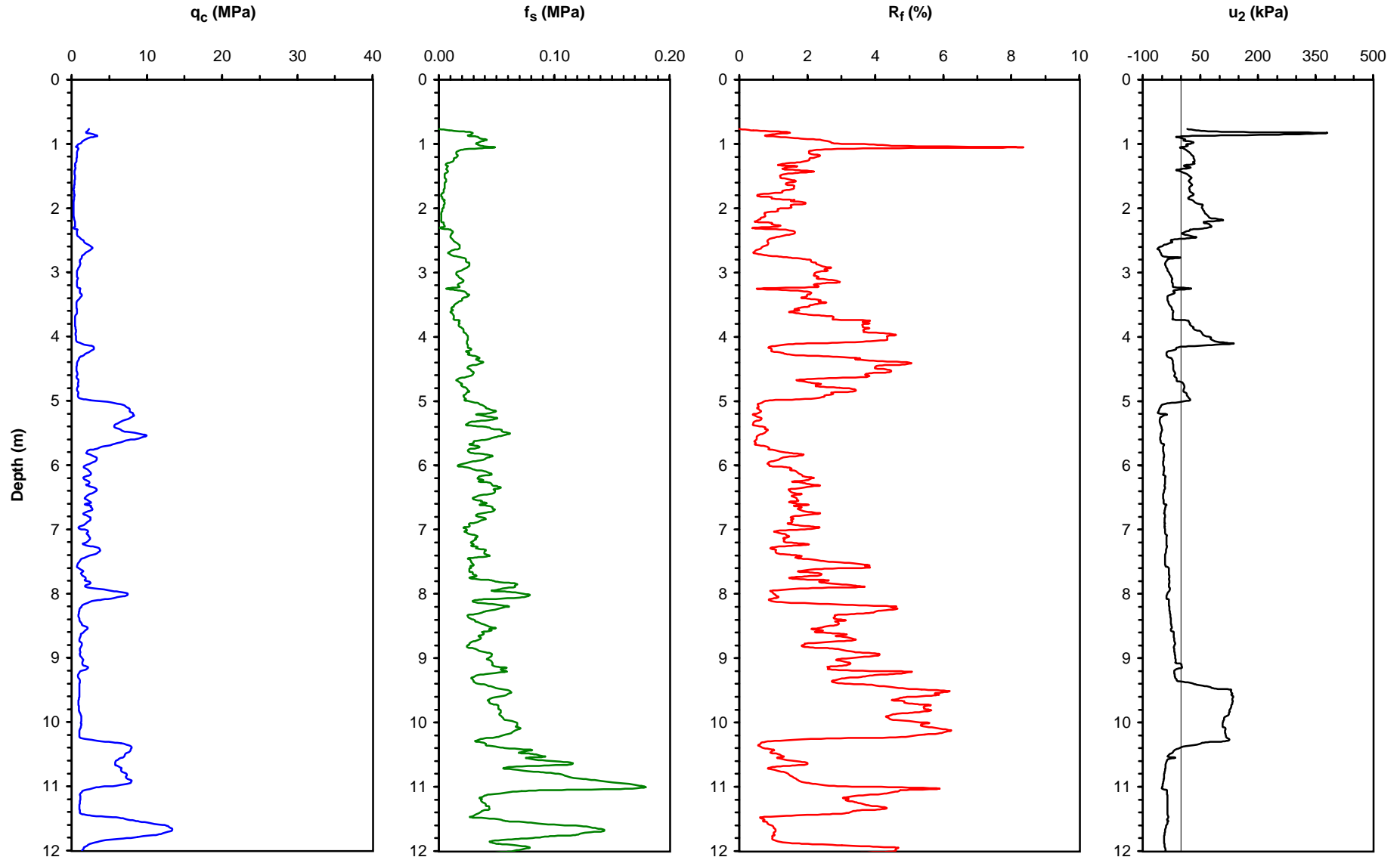
Elevation (m): 29.269

Date: 03 July 2000 11:30

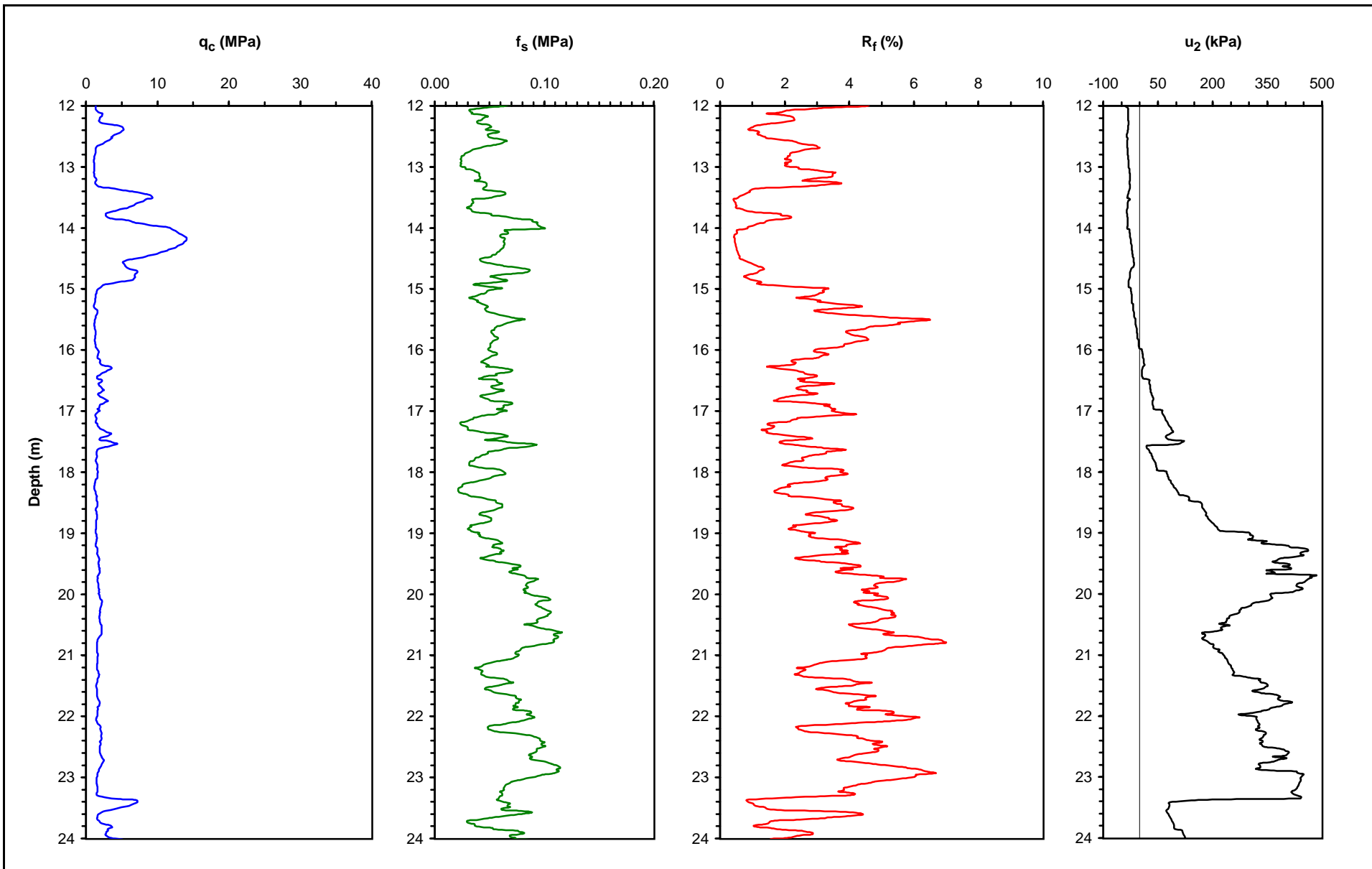
Water Table Elevation (m): N/R

Responsible Engineers: T. L. Youd and C. Christensen, BYU

Page: 1 of 3



UCB-BYU-UCLA ZETAŞ-SAU Joint Research	Project Name: CPT Liquefaction Investigations, Adapazari, Turkey Location: Line Three: Venicami Sokak GPS Coordinates: 40.77522° N, 30.40665° E	Survey Coordinates (m): 33,316.42 N, 29,833.89 W Elevation (m): 29.269	Page: 2 of 3
Sponsored by: NSF, PEER	Test Number: CPTU 3 - 03 Type of Cone: ELC10 CFP No. 000606 (a.p. v.d. Berg) File Name: cptu 3 - 03.txt Operator: ZETAŞ (Zemin Teknolojisi, A. Ş.)	Date: 03 July 2000 11:30 Water Table Elevation (m): N/R Responsible Engineers: T. L. Youd and C. Christensen, BYU	
Caltrans, CEC, PG&E	Notes: Pre-explored to a depth of 0.76 m to clear utilities and debris.		



UCB-BYU-UCLA ZETAŞ-SAU Joint Research	Project Name: CPT Liquefaction Investigations, Adapazari, Turkey Location: Line Three: Venicami Sokak GPS Coordinates: 40.77522° N, 30.40665° E	Survey Coordinates (m): 33,316.42 N, 29,833.89 W Elevation (m): 29.269	Page: 3 of 3
Sponsored by: NSF, PEER	Test Number: CPTU 3 - 03 Type of Cone: ELC10 CFP No. 000606 (a.p. v.d. Berg) File Name: cptu 3 - 03.txt Operator: ZETAŞ (Zemin Teknolojisi, A. Ş.)	Date: 03 July 2000 11:30 Water Table Elevation (m): N/R Responsible Engineers: T. L. Youd and C. Christensen, BYU	
Caltrans, CEC, PG&E	Notes: Pre-explored to a depth of 0.76 m to clear utilities and debris.		

