

UCB-BYU-UCLA
ZETAŞ-SAU
Joint Research

Project Name: CPT Liquefaction Investigations, Adapazari, Turkey

Page: 1 of 3

Location: Line One: Çark Caddesi

GPS Coordinates: 40.77449° N, 30.37755° E

Survey Coordinates (m): 32,507.21 N, 32,147.78 W

Test Number: CPTU 1 - 16

Elevation (m): 26.303

Type of Cone: ELC10 CFP No. 000605 (a.p. v.d. Berg)

Date: 24 June 2000 14:50

Sponsored by:

File Name: cptu 1 - 16.txt

Water Table Elevation (m): N/R

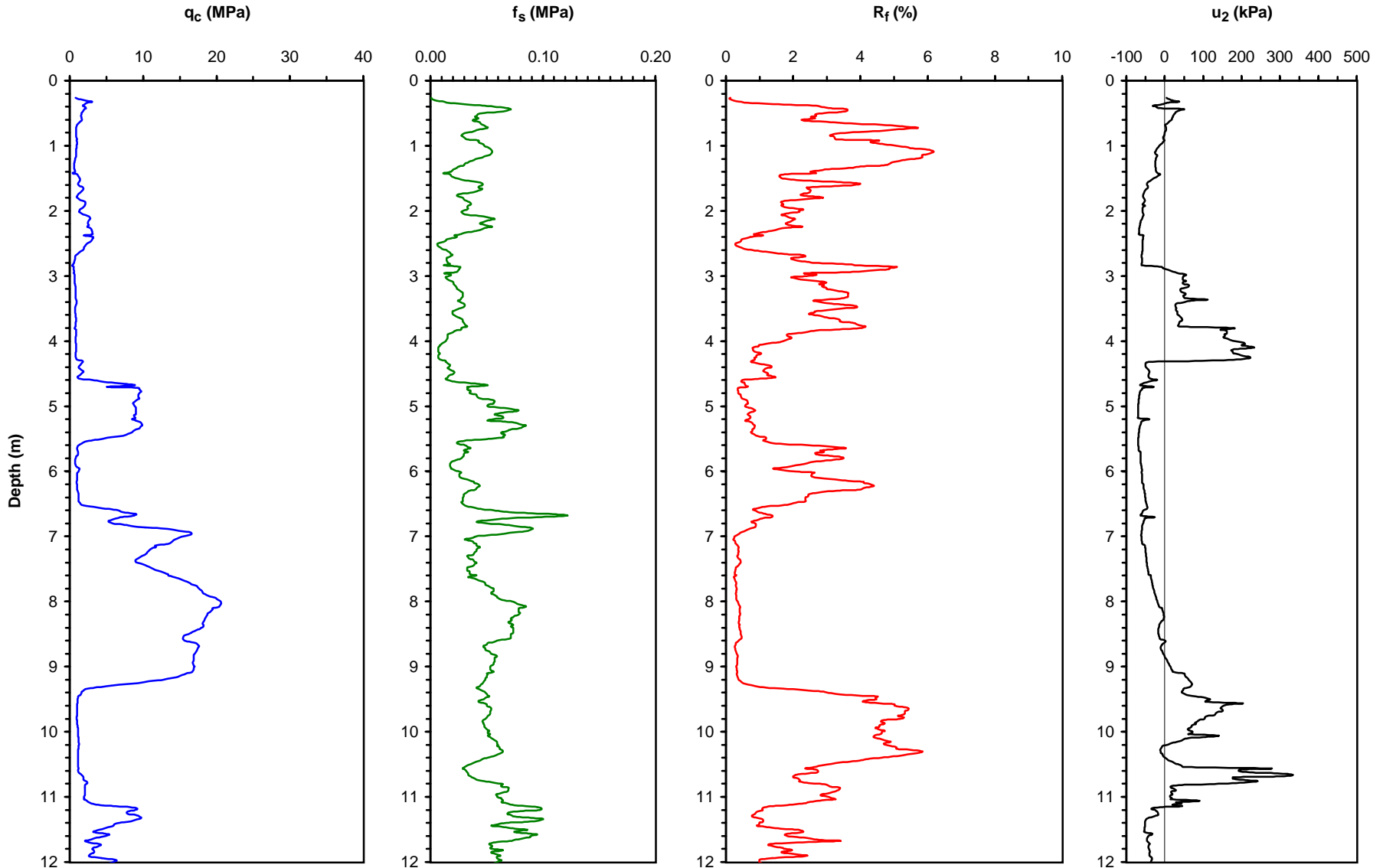
NSF, PEER

Operator: ZETAŞ (Zemin Teknolojisi, A. Ş.)

Responsible Engineers: T. Leslie Youd and Curt Christensen, BYU

Caltrans, CEC, PG&E

Notes: Pre-explored to a depth of 0.24 m to clear utilities.



UCB-BYU-UCLA
ZETAŞ-SAU
Joint Research

Project Name: CPT Liquefaction Investigations, Adapazari, Turkey
Location: Line One: Çark Caddesi
GPS Coordinates: 40.77449° N, 30.37755° E
Test Number: CPTU 1 - 16
Type of Cone: ELC10 CFP No. 000605 (a.p. v.d. Berg)

Page: 2 of 3

Survey Coordinates (m): 32,507.21 N, 32,147.78 W
Elevation (m): 26.303

Date: 24 June 2000 14:50

Sponsored by:
NSF, PEER

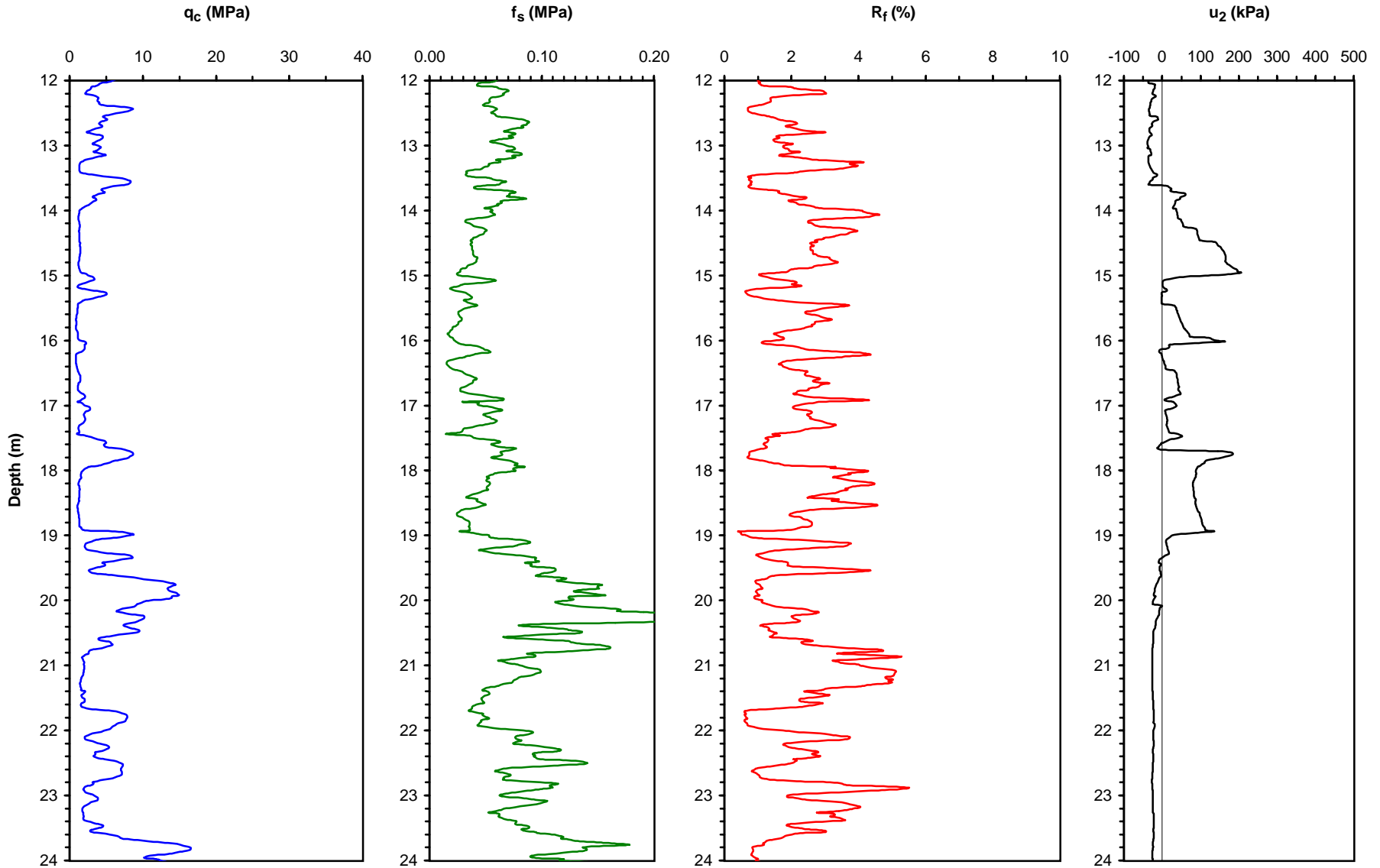
File Name: cptu 1 - 16.txt
Operator: ZETAŞ (Zemin Teknolojisi, A. Ş.)

Water Table Elevation (m): N/R

Responsible Engineers: T. Leslie Youd and Curt Christensen, BYU

Caltrans, CEC, PG&E

Notes: Pre-explored to a depth of 0.24 m to clear utilities.



UCB-BYU-UCLA
ZETAŞ-SAU
Joint Research

Project Name: CPT Liquefaction Investigations, Adapazari, Turkey

Location: Line One: Çark Caddesi

GPS Coordinates: 40.77449° N, 30.37755° E

Test Number: CPTU 1 - 16

Type of Cone: ELC10 CFP No. 000605 (a.p. v.d. Berg)

Sponsored by:

File Name: cptu 1 - 16.txt

NSF, PEER

Operator: ZETAŞ (Zemin Teknolojisi, A. Ş.)

Caltrans, CEC, PG&E

Notes: Pre-explored to a depth of 0.24 m to clear utilities.

Page: 3 of 3

Survey Coordinates (m): 32,507.21 N, 32,147.78 W

Elevation (m): 26.303

Date: 24 June 2000 14:50

Water Table Elevation (m): N/R

Responsible Engineers: T. Leslie Youd and Curt Christensen, BYU

