

UCB-BYU-UCLA
ZETAŞ-SAU
Joint Research

Project Name: CPT Liquefaction Investigations, Adapazari, Turkey
Location: Line One: Çark Caddesi
GPS Coordinates: 40.77393° N, 30.36911° E
Test Number: CPTU 1 - 07
Type of Cone: ELC10 SeisCFP No. 991232 (a.p. v.d. Berg)

Page: 1 of 2

Survey Coordinates (m): 32,230.40 N, 32,816.77 W

Elevation (m): 26.644 m

Date: 23 June 2000 9:15

Sponsored by:
NSF, PEER

File Name: cptu 1 - 07.txt

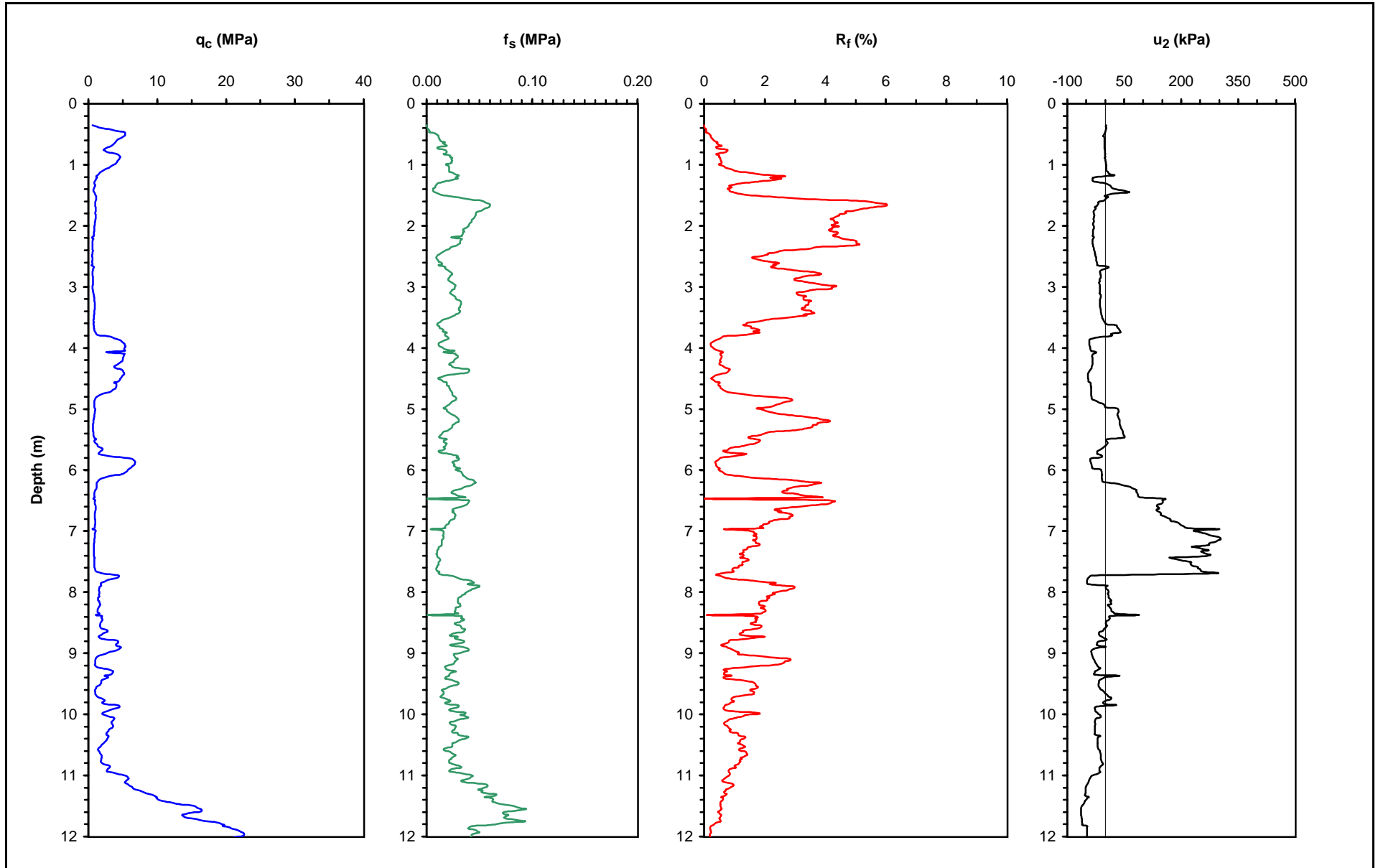
Water Table Elevation (m): N/A

Operator: ZETAŞ (Zemin Teknolojisi, A. Ş.)

Responsible Engineers: T. Leslie Youd and Curt Christensen, BYU

Caltrans, CEC, PG&E

Notes: Sounding pre-explored to a depth of approximately 0.33 m to clear utilities and debris.



UCB-BYU-UCLA
ZETAŞ-SAU
Joint Research

Project Name: CPT Liquefaction Investigations, Adapazari, Turkey

Page: 2 of 2

Location: Line One: Çark Caddesi

GPS Coordinates: 40.77393° N, 30.36911° E

Survey Coordinates (m): 32,230.40 N, 32,816.77 W

Test Number: CPTU 1 - 07

Elevation (m): 26.644 m

Type of Cone: ELC10 SeisCFP No. 991232 (a.p. v.d. Berg)

Date: 23 June 2000 9:15

Sponsored by:

File Name: cptu 1 - 07.txt

Water Table Elevation (m): N/A

NSF, PEER

Operator: ZETAŞ (Zemin Teknolojisi, A. Ş.)

Responsible Engineers: T. Leslie Youd and Curt Christensen, BYU

Caltrans, CEC, PG&E

Notes: Sounding pre-explored to a depth of approximately 0.33 m to clear utilities and debris.

