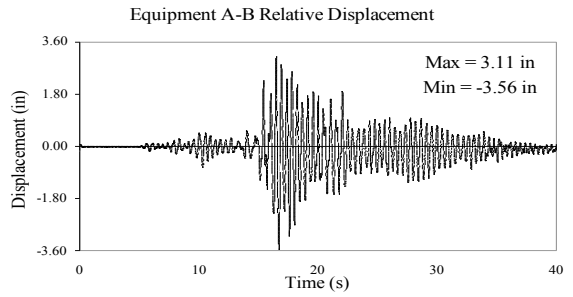
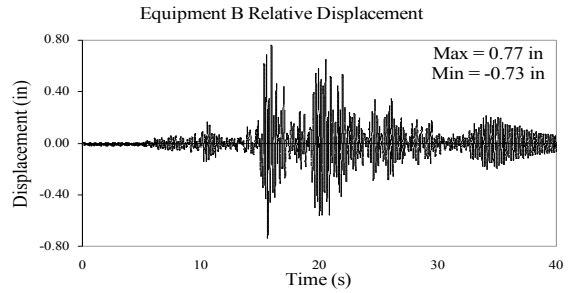
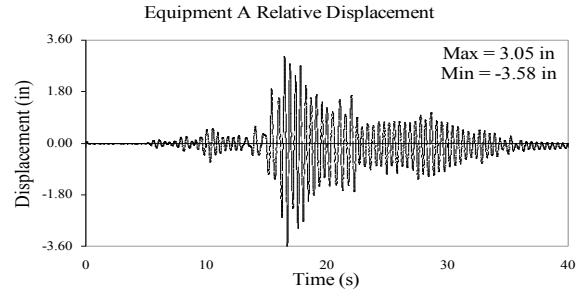
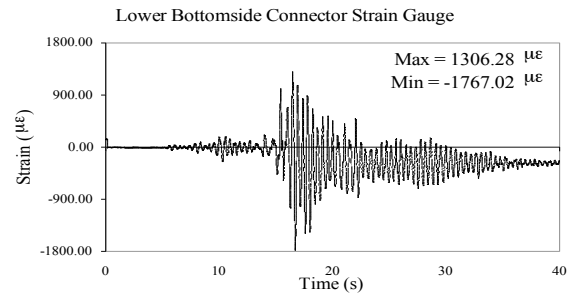
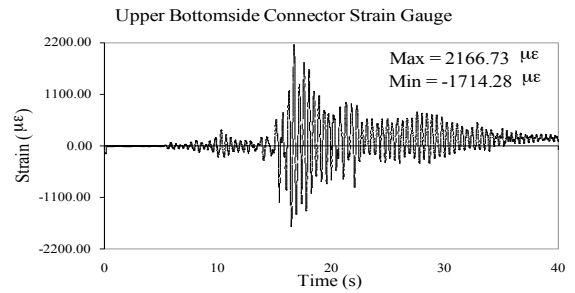
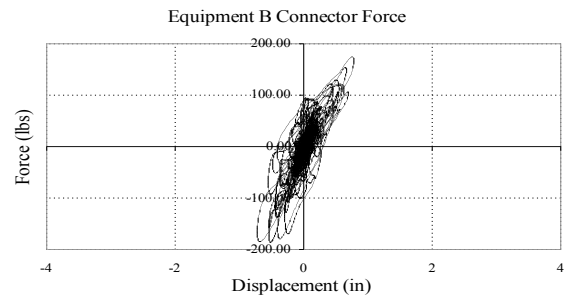
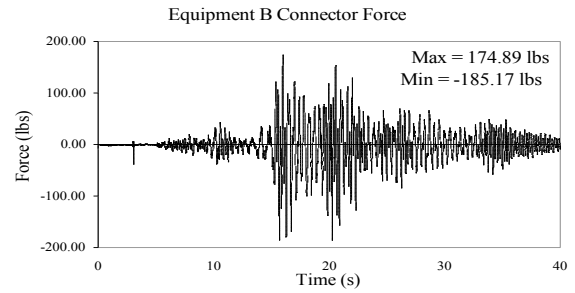


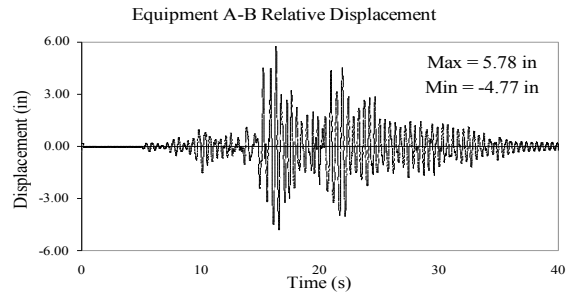
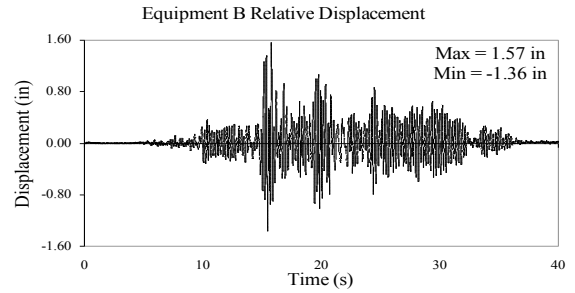
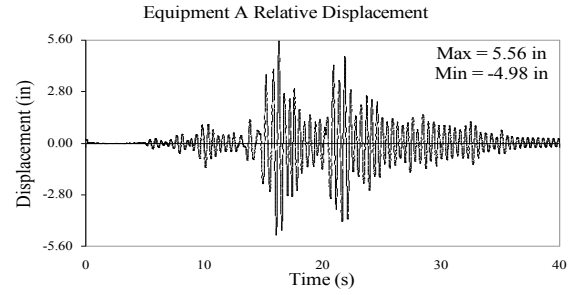
**TEST RC-88
EQUIPMENT COMBINATION 4,
FLEXIBLE STRAP CONNECTOR
TABAS GROUND MOTION, 50% SPAN
ACCELERATIONS AND DISPLACEMENTS**



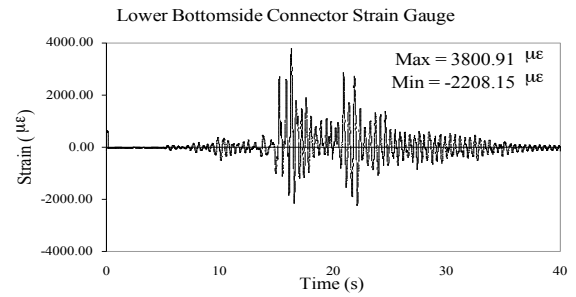
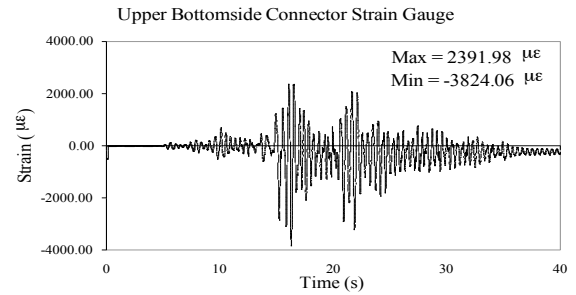
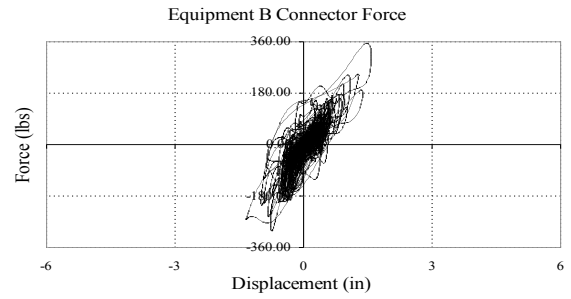
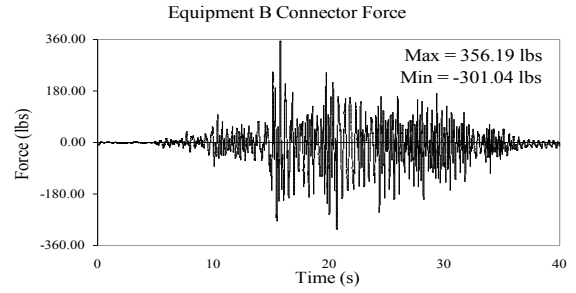
TEST RC-88
EQUIPMENT COMBINATION 4,
FLEXIBLE STRAP CONNECTOR
TABAS GROUND MOTION, 50% SPAN
CONNECTOR LONGITUDINAL FORCES AND STRAINS



**TEST RC-88B
EQUIPMENT COMBINATION 4,
FLEXIBLE STRAP CONNECTOR
TABAS GROUND MOTION, 100% SPAN
ACCELERATIONS AND DISPLACEMENTS**



**TEST RC-88B
EQUIPMENT COMBINATION 4,
FLEXIBLE STRAP CONNECTOR
TABAS GROUND MOTION, 100% SPAN
CONNECTOR LONGITUDINAL FORCES AND STRAINS**

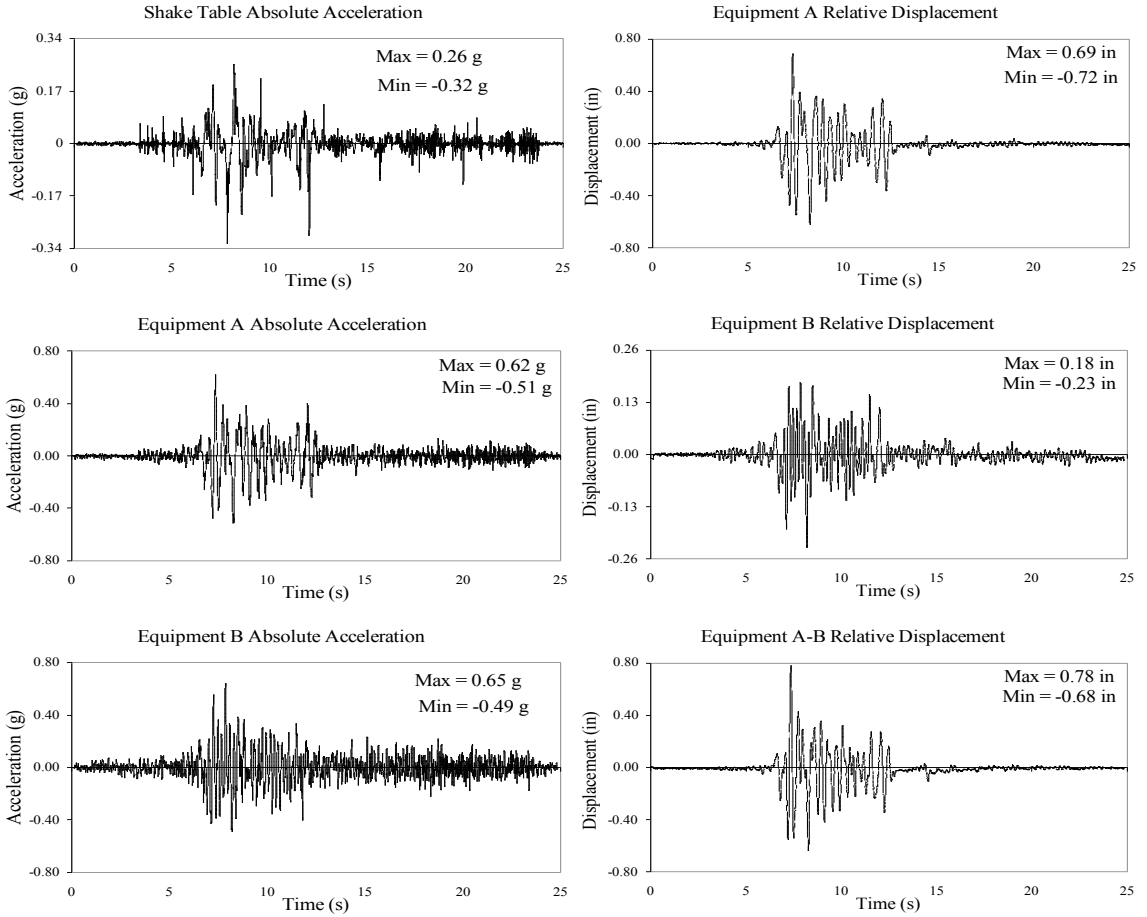


TEST RC-92

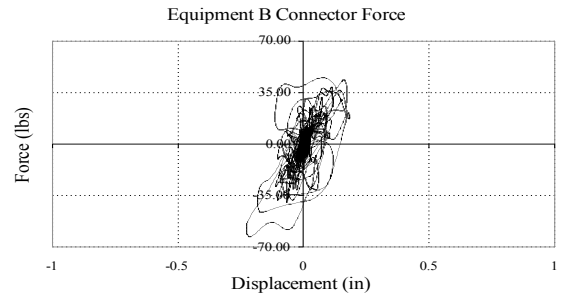
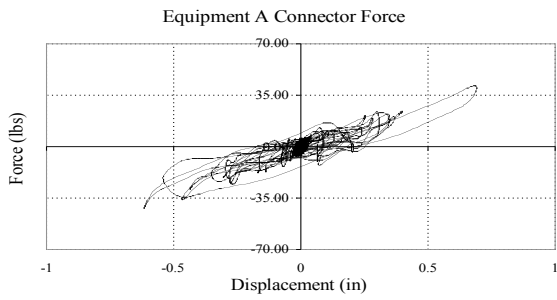
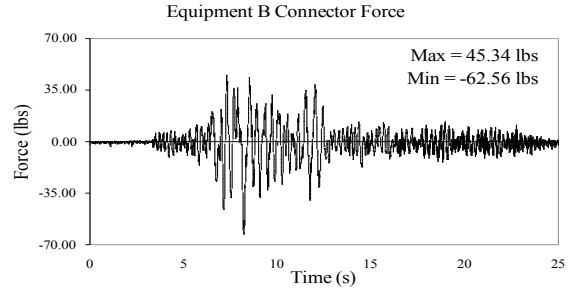
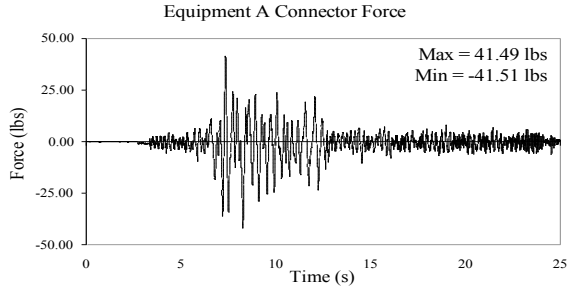
EQUIPMENT COMBINATION 4, BUS SLIDER CONNECTOR

NEWHALL GROUND MOTION, 30% SPAN

ACCELERATIONS AND DISPLACEMENTS



TEST RC-92
EQUIPMENT COMBINATION 4, BUS SLIDER CONNECTOR
NEWHALL GROUND MOTION, 30% SPAN
CONNECTOR LONGITUDINAL FORCES

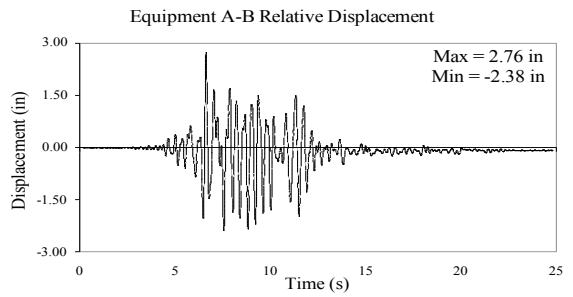
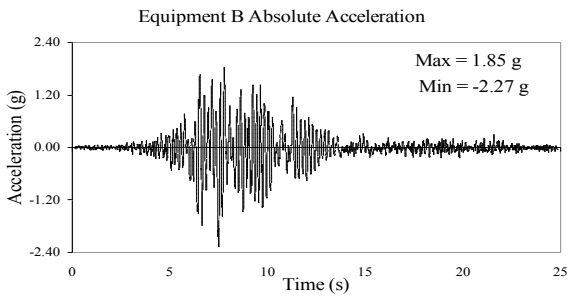
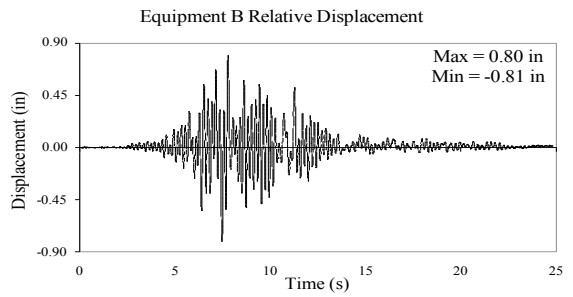
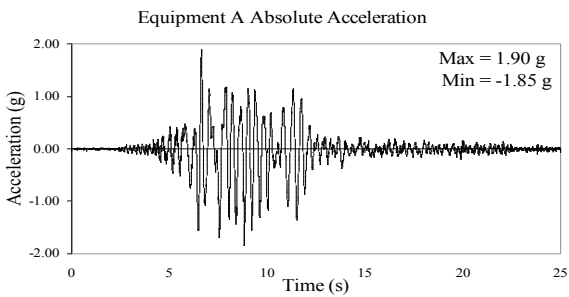
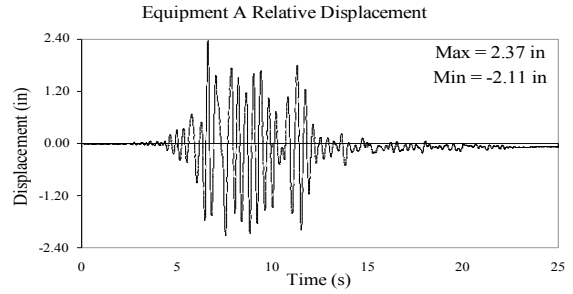
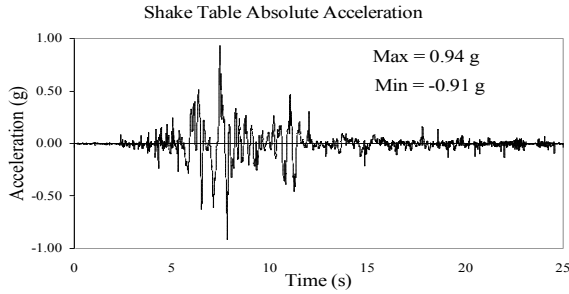


TEST RC-93

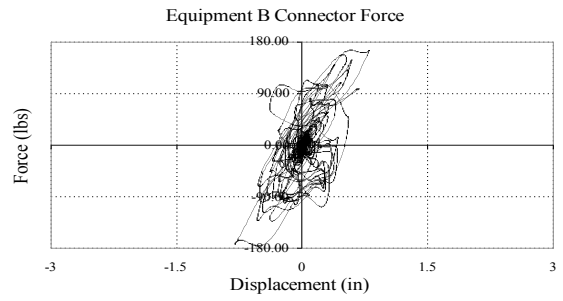
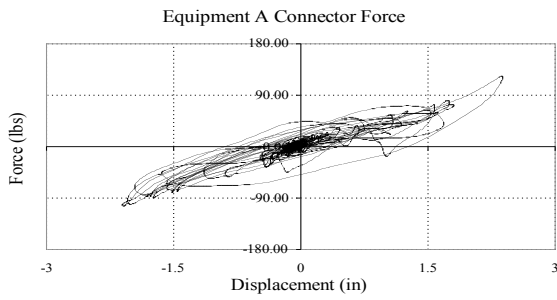
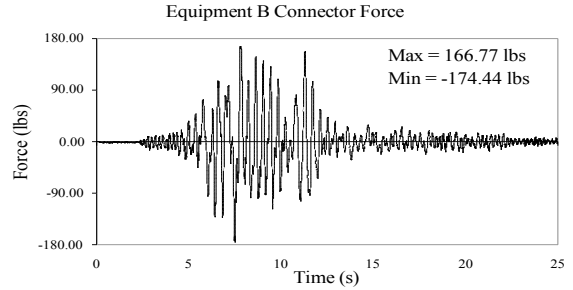
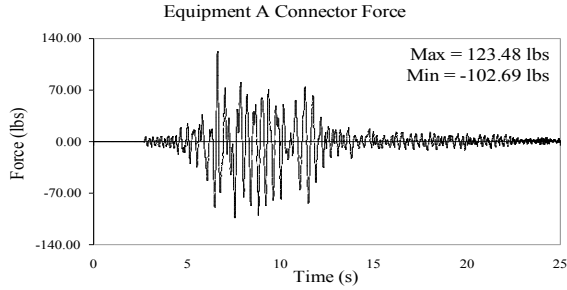
EQUIPMENT COMBINATION 4, BUS SLIDER CONNECTOR

NEWHALL GROUND MOTION, 100% SPAN

ACCELERATIONS AND DISPLACEMENTS



TEST RC-93
EQUIPMENT COMBINATION 4, BUS SLIDER CONNECTOR
NEWHALL GROUND MOTION, 100% SPAN
CONNECTOR LONGITUDINAL FORCES

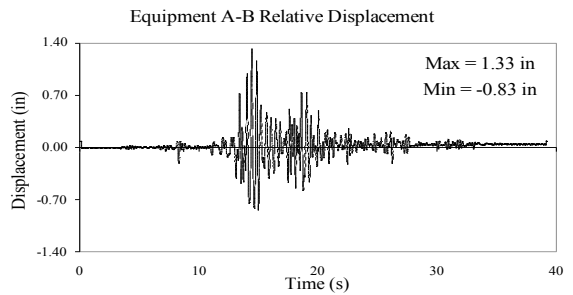
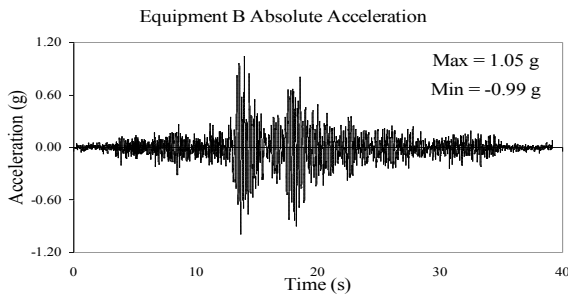
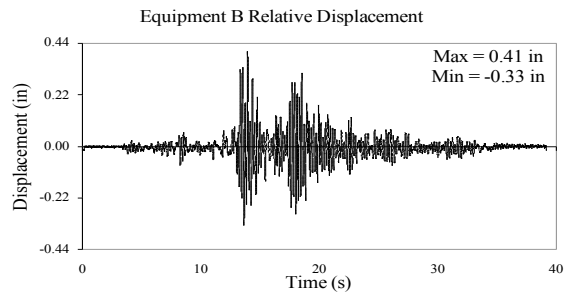
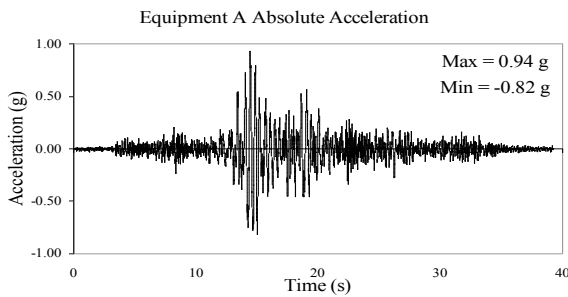
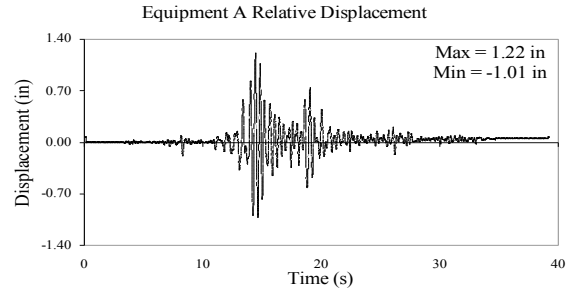
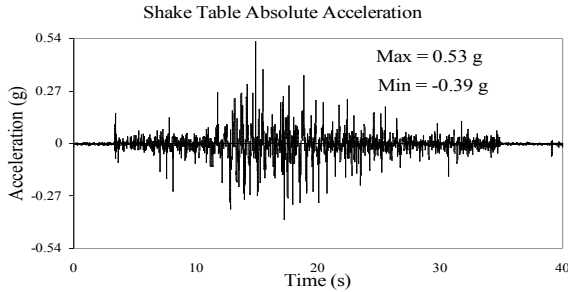


TEST RC-94

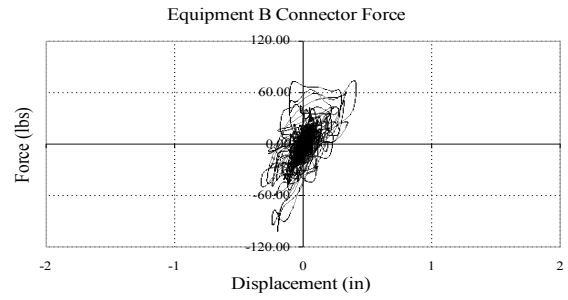
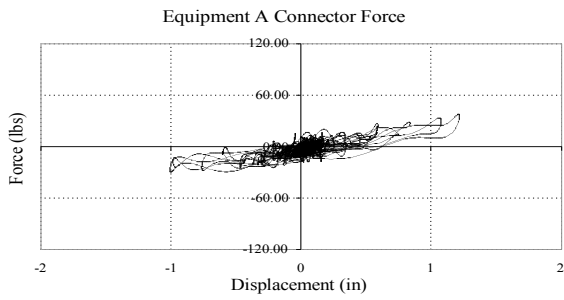
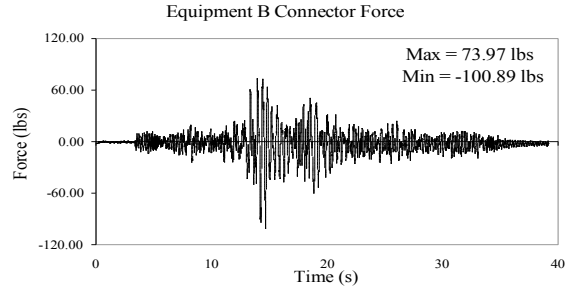
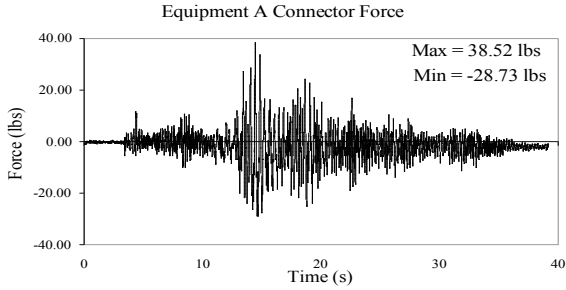
EQUIPMENT COMBINATION 4, BUS SLIDER CONNECTOR

TABAS GROUND MOTION, 25% SPAN

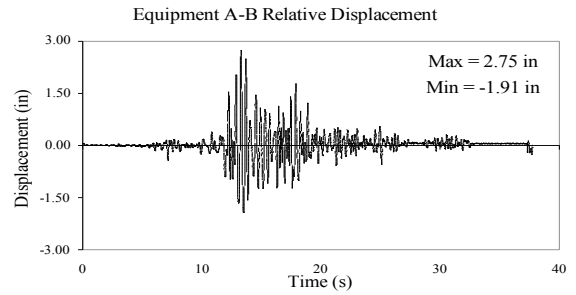
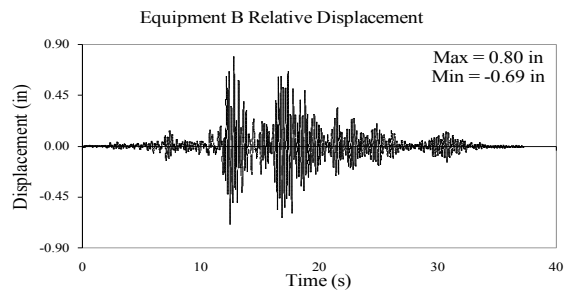
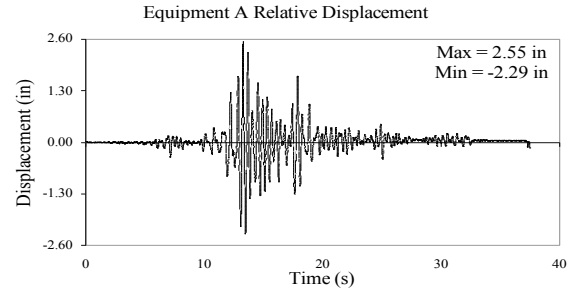
ACCELERATIONS AND DISPLACEMENTS



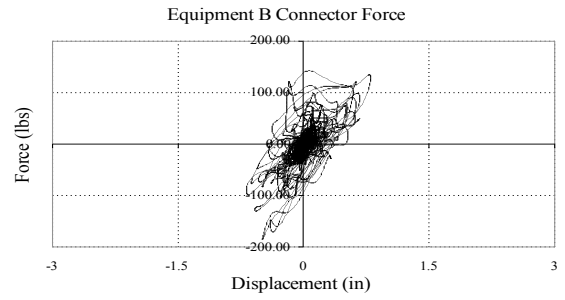
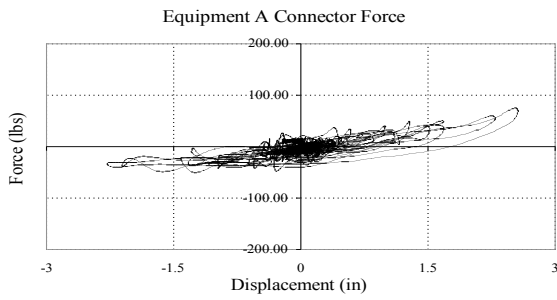
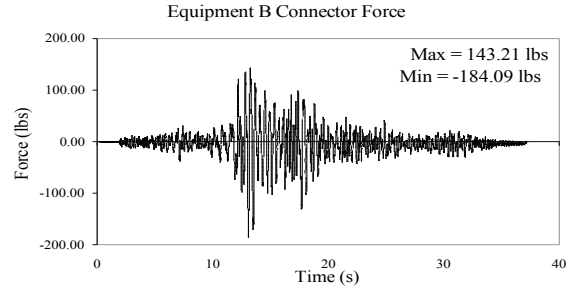
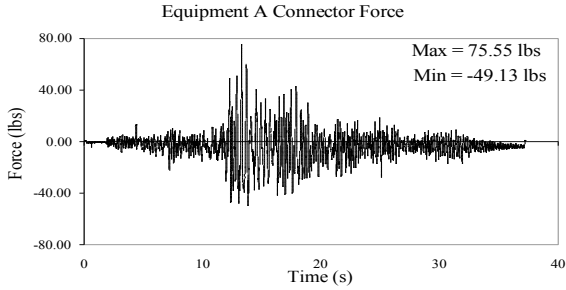
TEST RC-94
EQUIPMENT COMBINATION 4, BUS SLIDER CONNECTOR
TABAS GROUND MOTION, 25% SPAN
CONNECTOR LONGITUDINAL FORCES



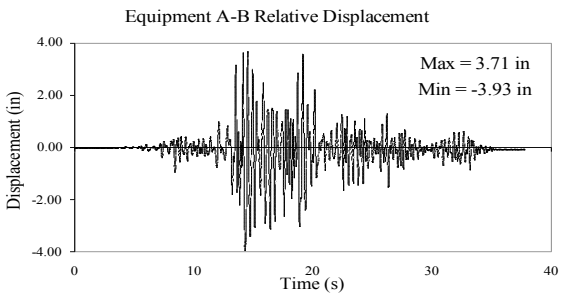
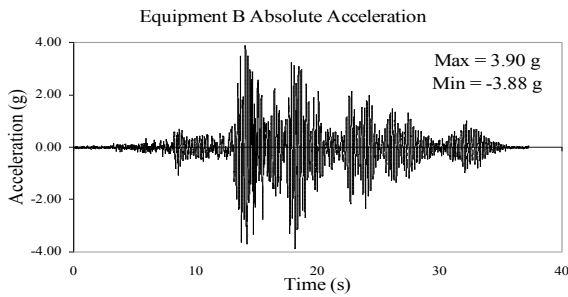
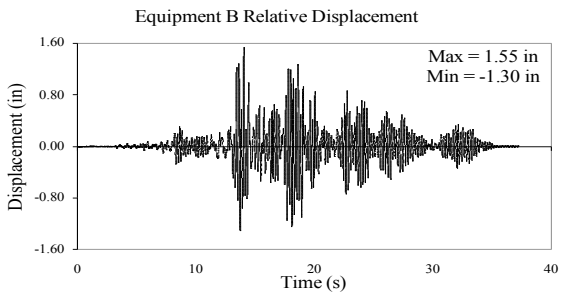
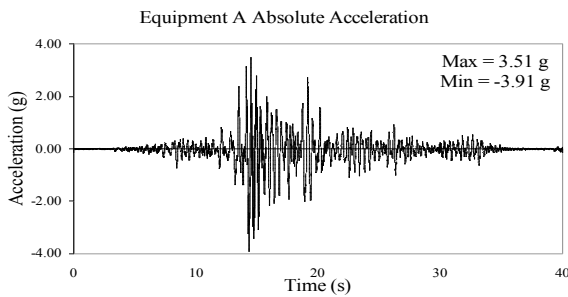
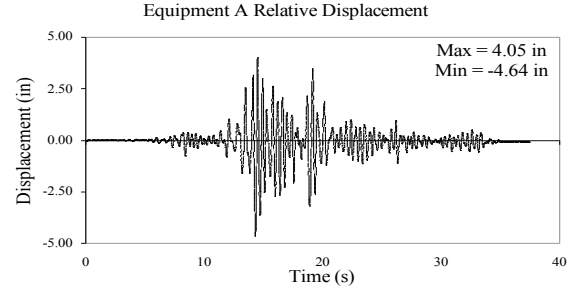
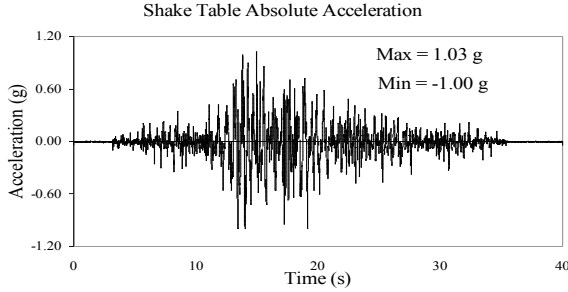
TEST RC-95
EQUIPMENT COMBINATION 4, BUS SLIDER CONNECTOR
TABAS GROUND MOTION, 50% SPAN
ACCELERATIONS AND DISPLACEMENTS



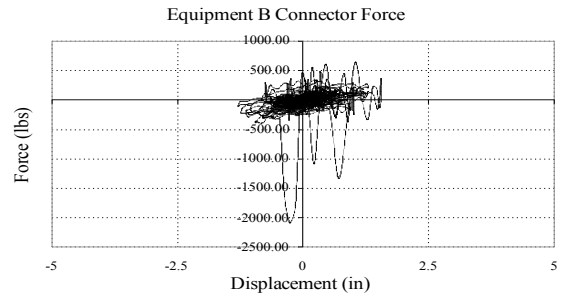
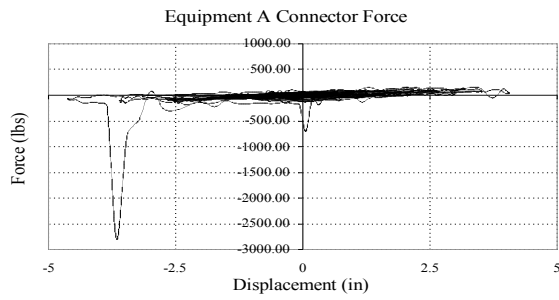
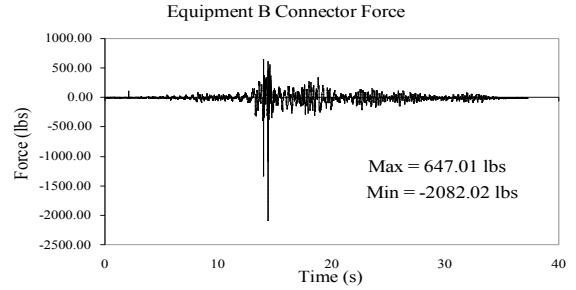
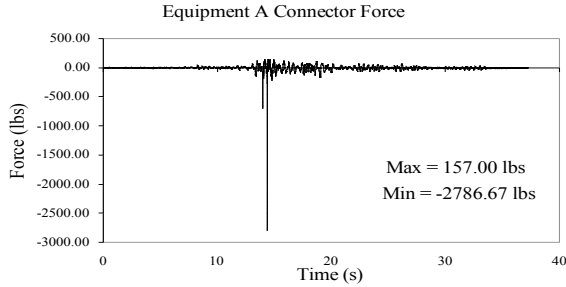
TEST RC-95
EQUIPMENT COMBINATION 4, BUS SLIDER CONNECTOR
TABAS GROUND MOTION, 50% SPAN
CONNECTOR LONGITUDINAL FORCES



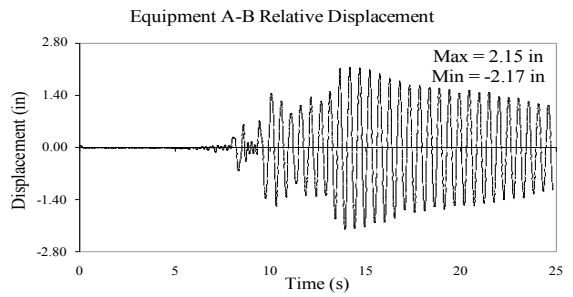
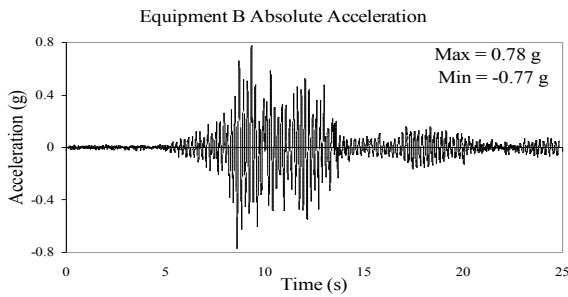
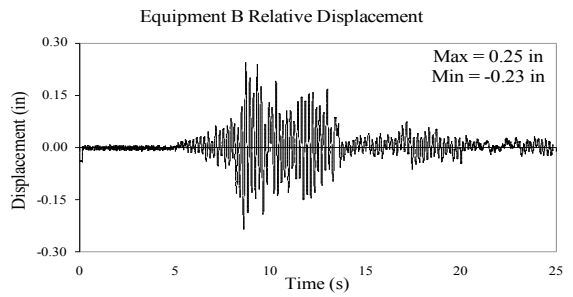
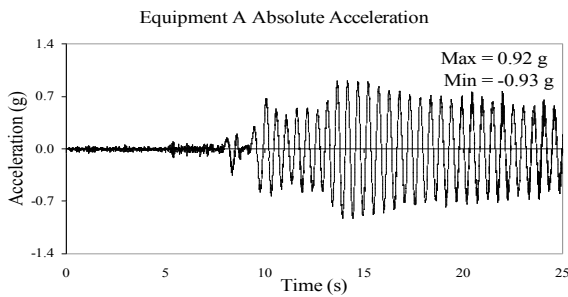
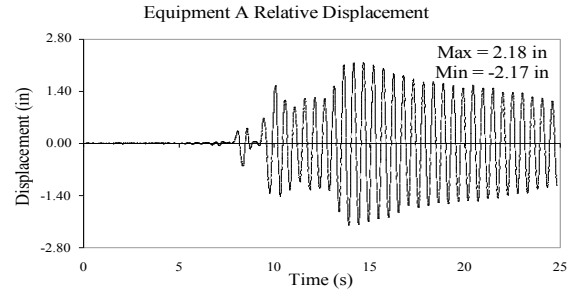
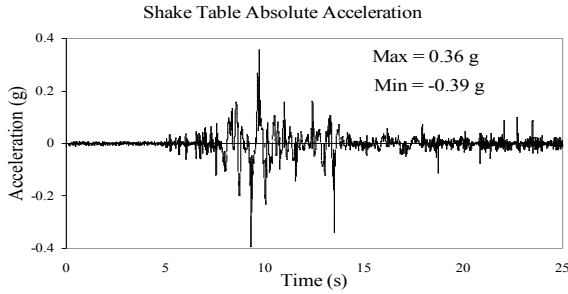
TEST RC-95B
EQUIPMENT COMBINATION 4, BUS SLIDER CONNECTOR
TABAS GROUND MOTION, 100% SPAN
ACCELERATIONS AND DISPLACEMENTS



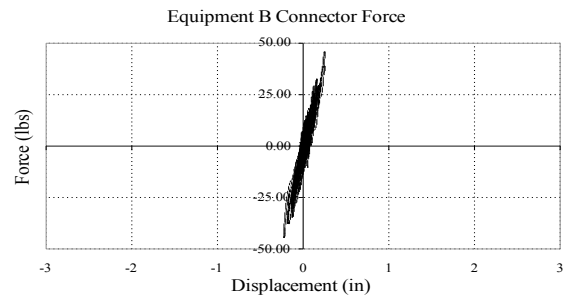
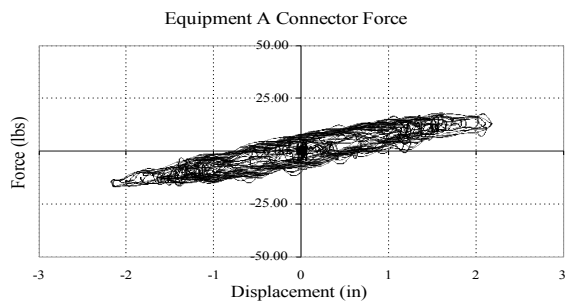
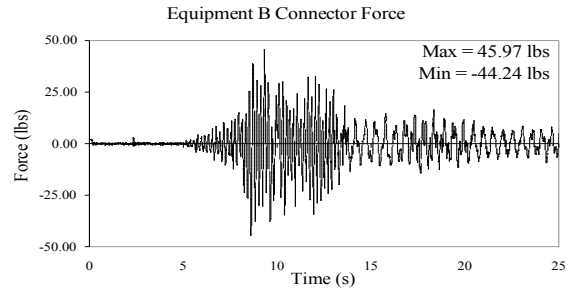
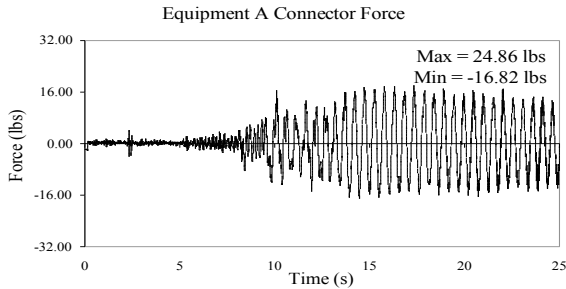
TEST RC-95B
EQUIPMENT COMBINATION 4, BUS SLIDER CONNECTOR
TABAS GROUND MOTION, 100% SPAN
CONNECTOR LONGITUDINAL FORCES



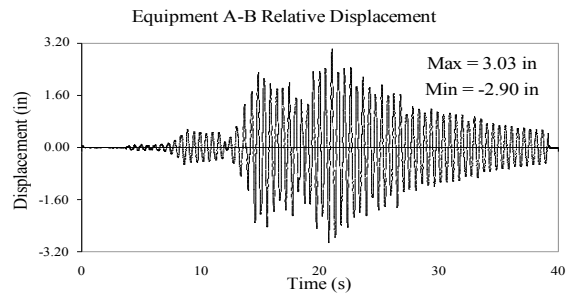
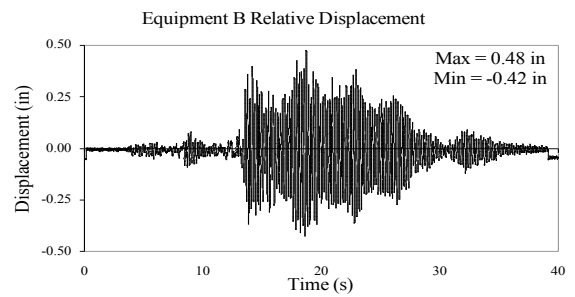
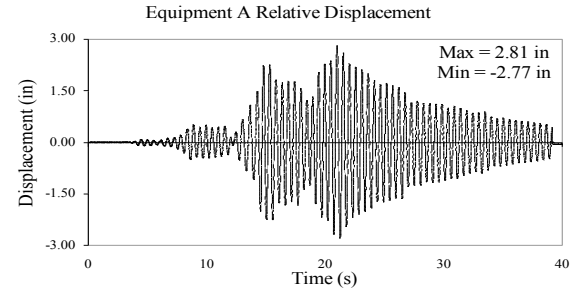
TEST RC-99
EQUIPMENT COMBINATION 2, SEFCOR CONNECTOR
NEWHALL GROUND MOTION, 30% SPAN
ACCELERATIONS AND DISPLACEMENTS



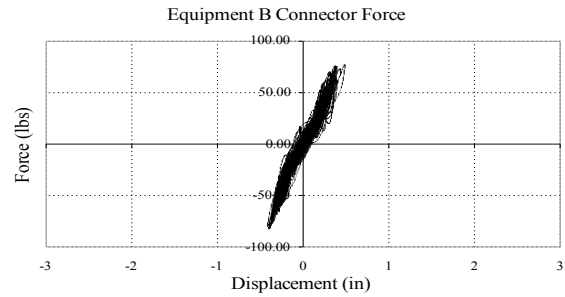
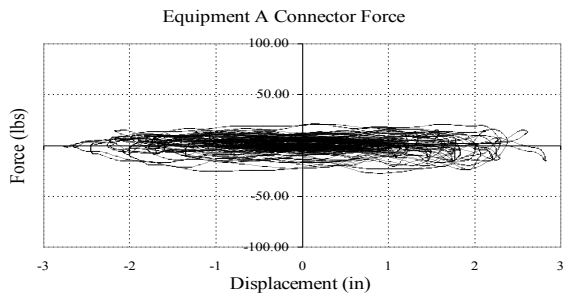
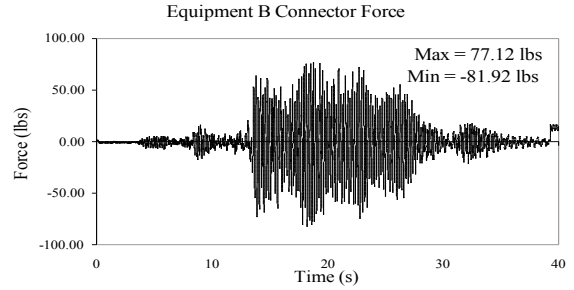
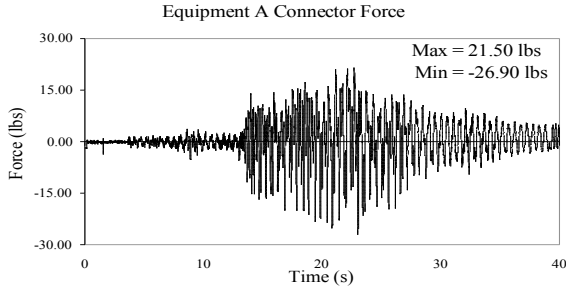
TEST RC-99
EQUIPMENT COMBINATION 2, SEFCOR CONNECTOR
NEWHALL GROUND MOTION, 30% SPAN
CONNECTOR LONGITUDINAL FORCES



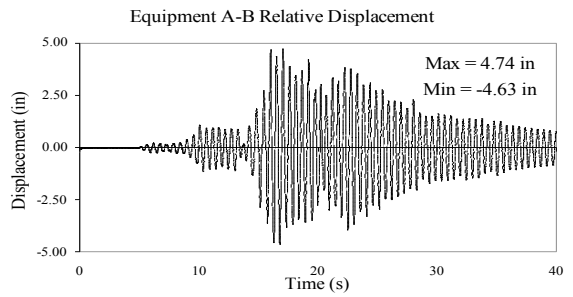
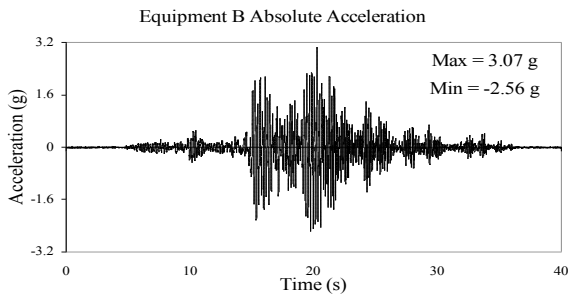
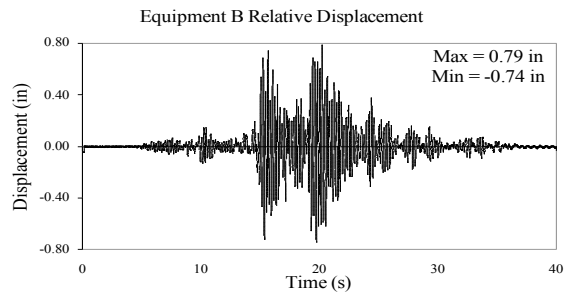
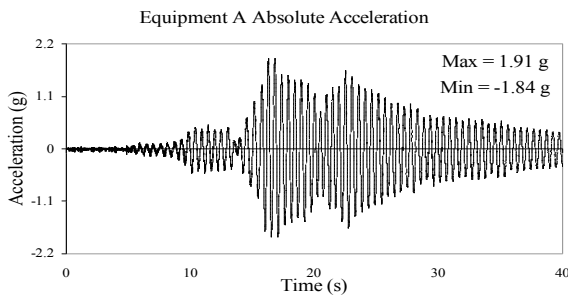
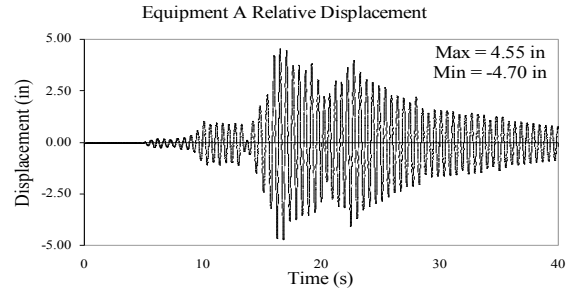
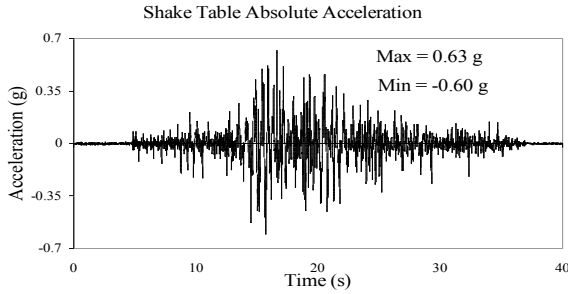
TEST RC-101
EQUIPMENT COMBINATION 2, SEFCOR CONNECTOR
TABAS GROUND MOTION, 25% SPAN
ACCELERATIONS AND DISPLACEMENTS



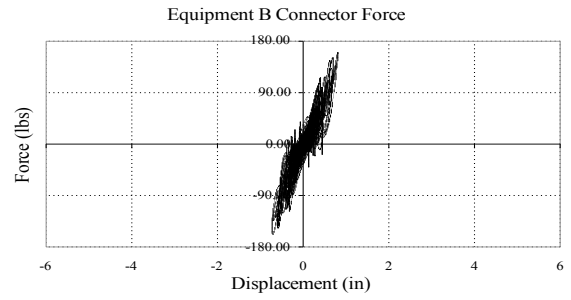
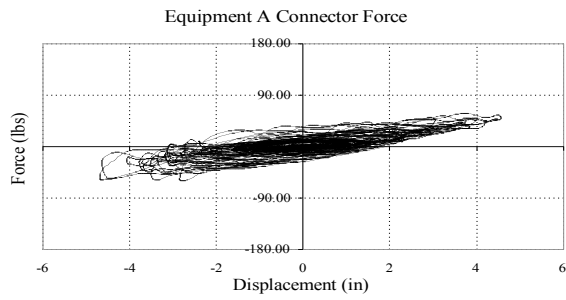
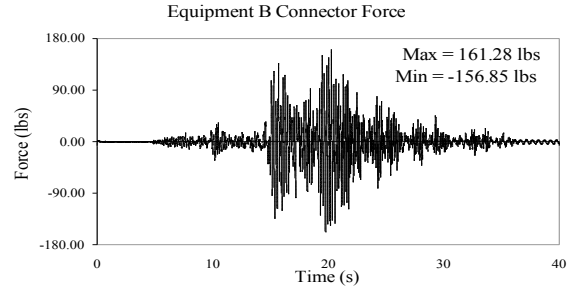
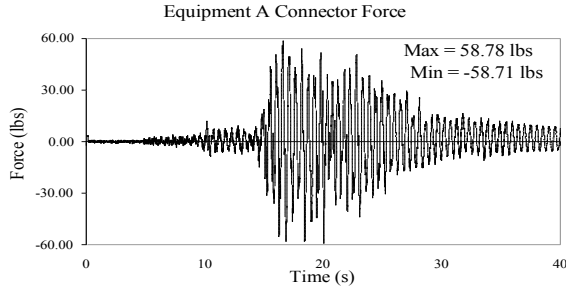
TEST RC-101
EQUIPMENT COMBINATION 2, SEFCOR CONNECTOR
TABAS GROUND MOTION, 25% SPAN
CONNECTOR LONGITUDINAL FORCES



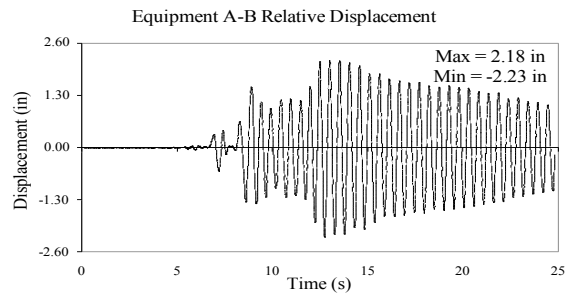
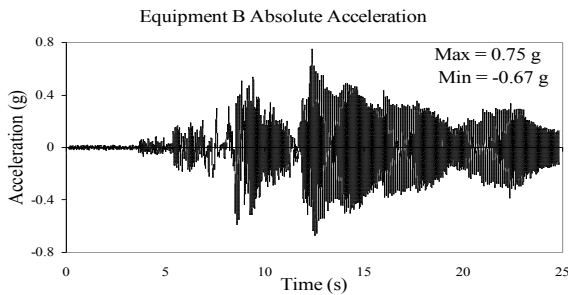
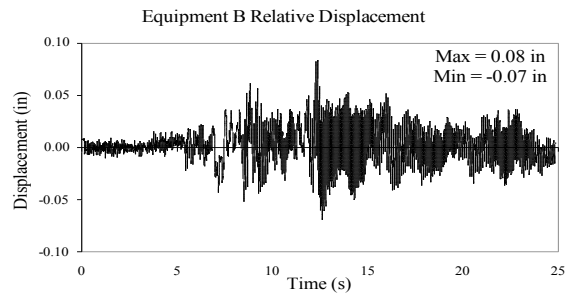
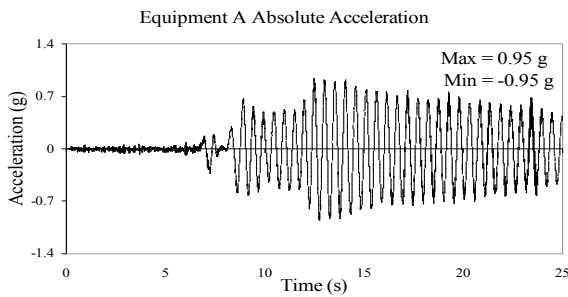
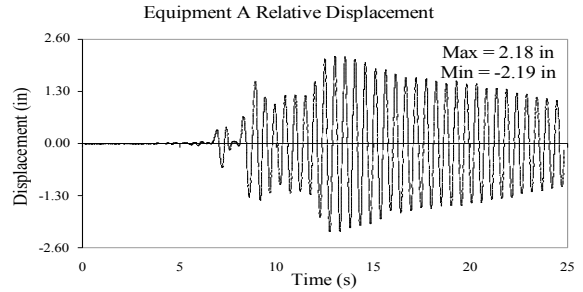
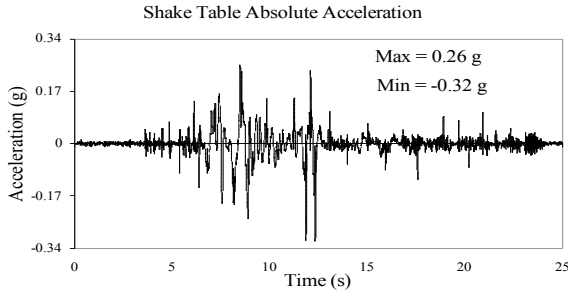
TEST RC-102
EQUIPMENT COMBINATION 2, SEFCOR CONNECTOR
TABAS GROUND MOTION, 50% SPAN
ACCELERATIONS AND DISPLACEMENTS



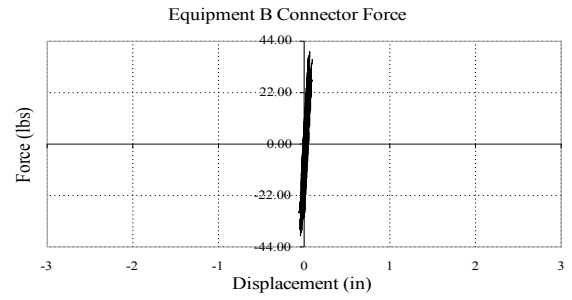
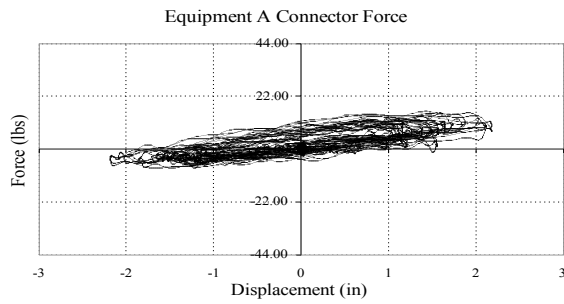
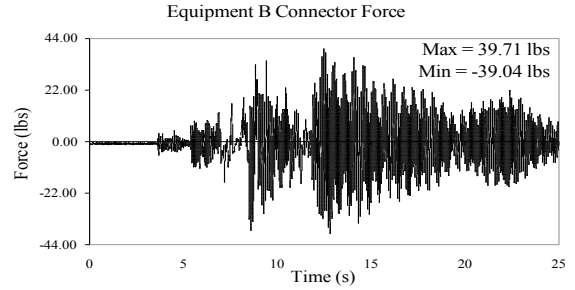
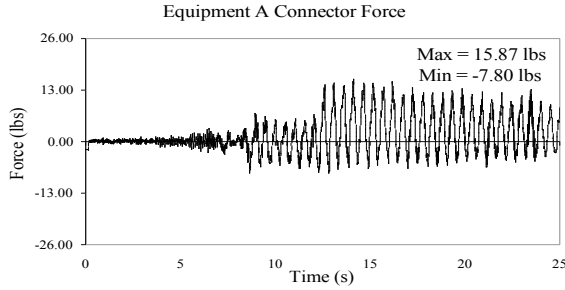
TEST RC-102
EQUIPMENT COMBINATION 2, SEFCOR CONNECTOR
TABAS GROUND MOTION, 50% SPAN
CONNECTOR LONGITUDINAL FORCES



TEST RC-106
EQUIPMENT COMBINATION 5, SEFCOR CONNECTOR
NEWHALL GROUND MOTION, 30% SPAN
ACCELERATIONS AND DISPLACEMENTS



TEST RC-106
EQUIPMENT COMBINATION 5, SEFCOR CONNECTOR
NEWHALL GROUND MOTION, 30% SPAN
CONNECTOR LONGITUDINAL FORCES

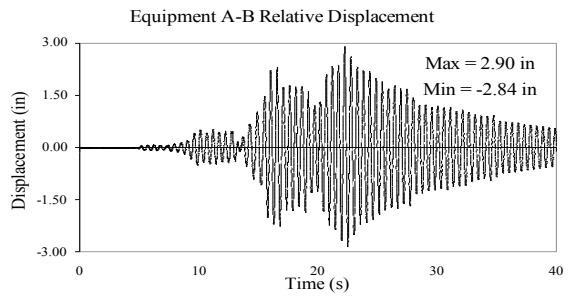
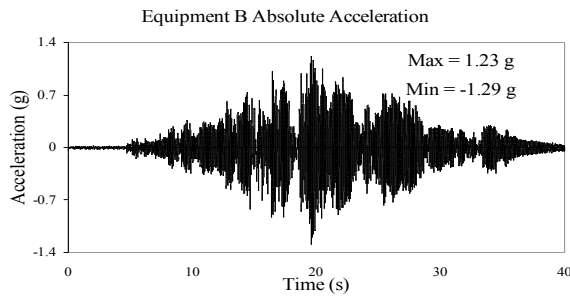
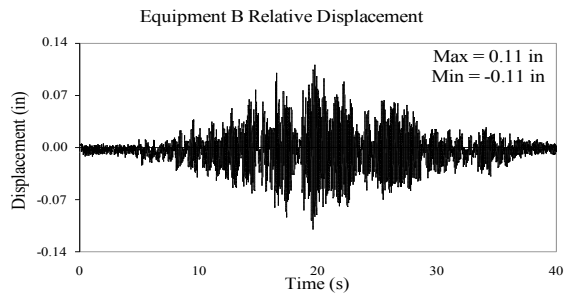
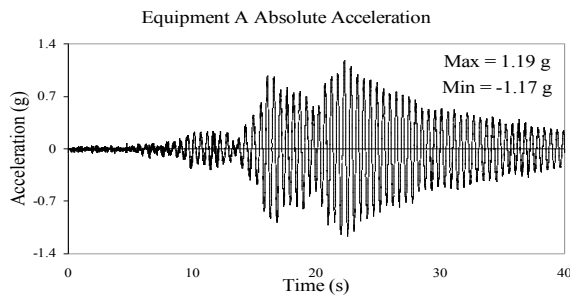
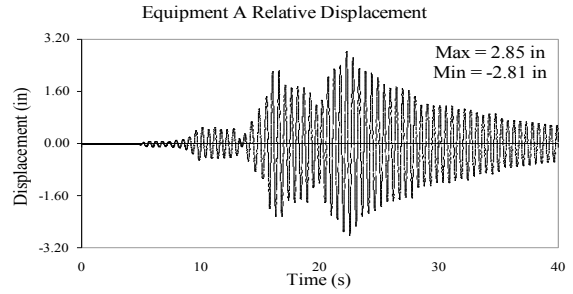
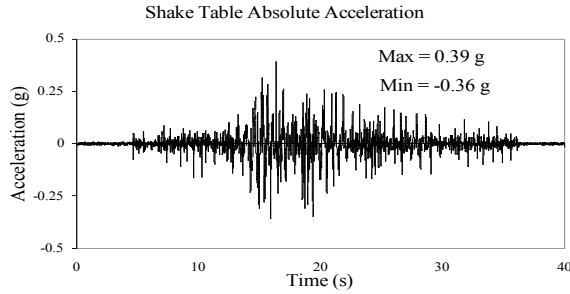


TEST RC-108

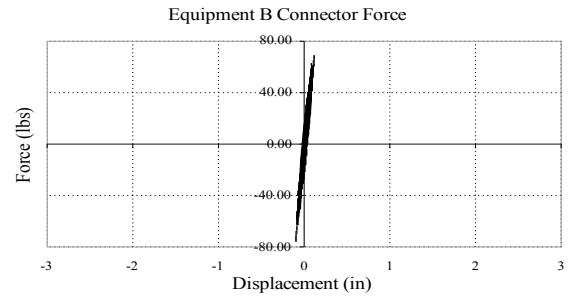
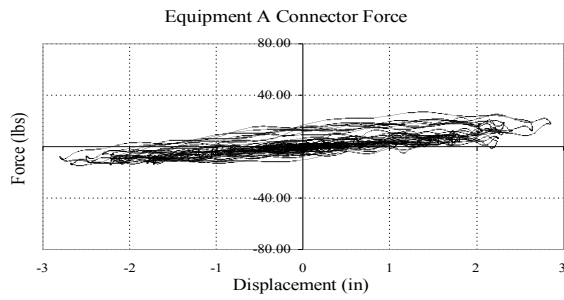
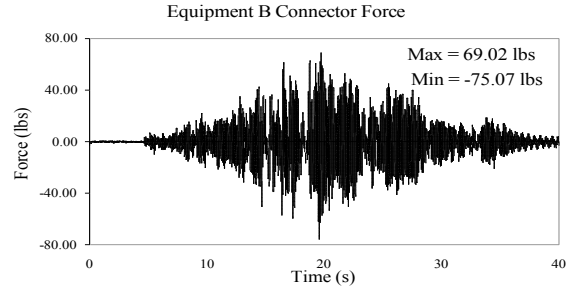
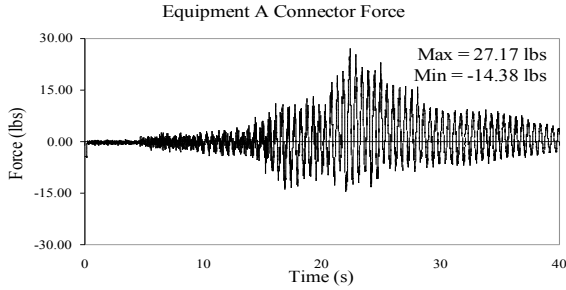
EQUIPMENT COMBINATION 5, SEFCOR CONNECTOR

TABAS GROUND MOTION, 25% SPAN

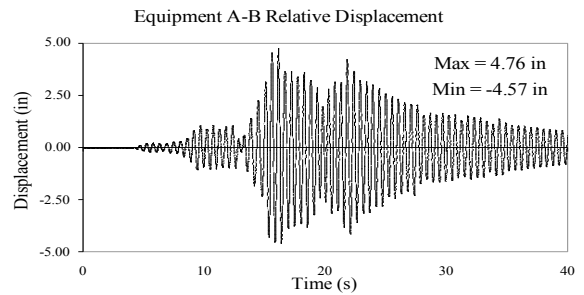
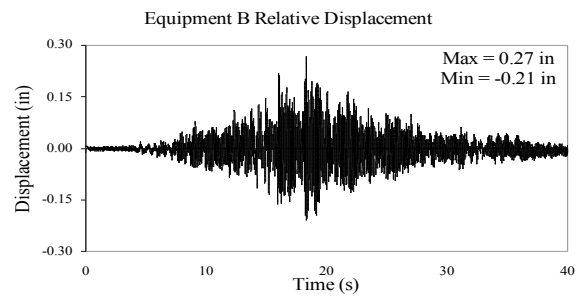
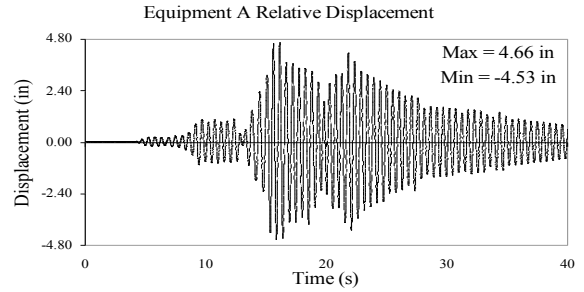
ACCELERATIONS AND DISPLACEMENTS



TEST RC-108
EQUIPMENT COMBINATION 5, SEFCOR CONNECTOR
TABAS GROUND MOTION, 25% SPAN
CONNECTOR LONGITUDINAL FORCES



TEST RC-109
EQUIPMENT COMBINATION 5, SEFCOR CONNECTOR
TABAS GROUND MOTION, 50% SPAN
ACCELERATIONS AND DISPLACEMENTS



TEST RC-109
EQUIPMENT COMBINATION 5, SEFCOR CONNECTOR
TABAS GROUND MOTION, 50% SPAN
CONNECTOR LONGITUDINAL FORCES

