

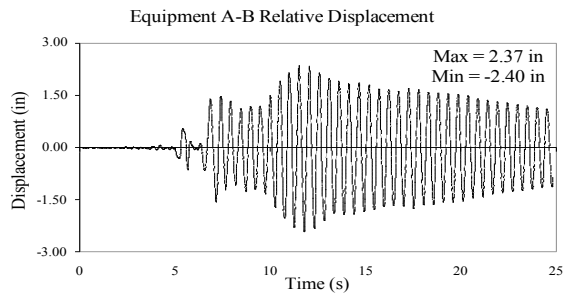
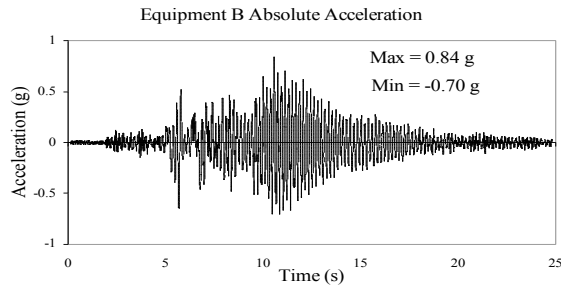
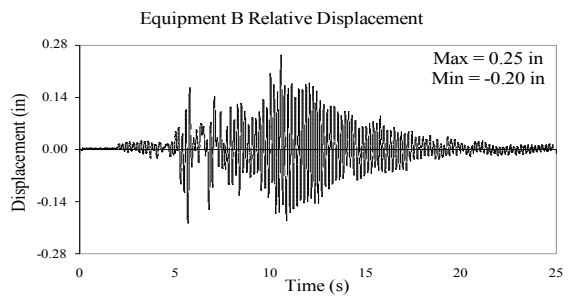
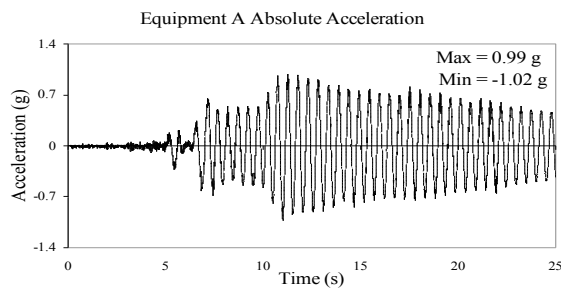
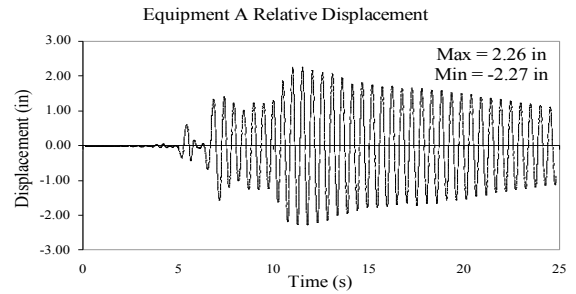
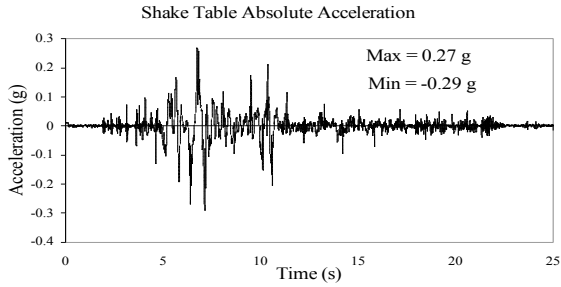
APPENDIX E
RESULTS OF SEISMIC TESTS

TEST RC-4

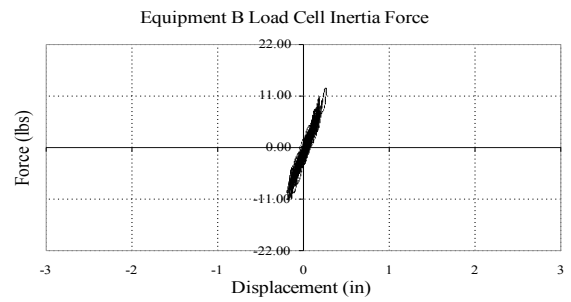
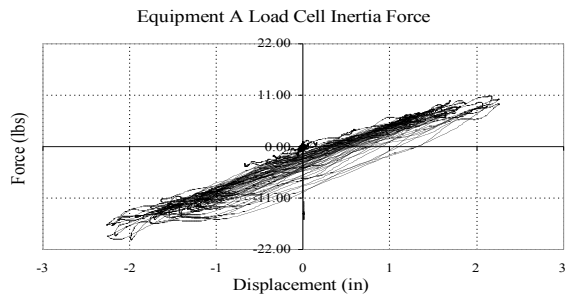
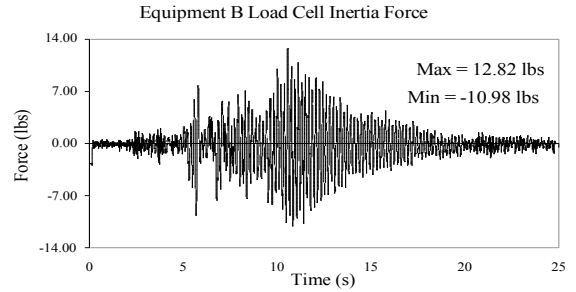
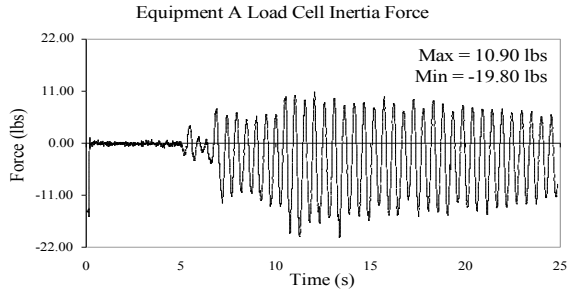
EQUIPMENT COMBINATION 2, UNCOUPLED

NEWHALL GROUND MOTION, 30% SPAN

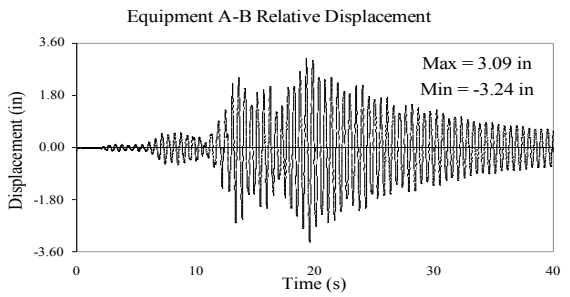
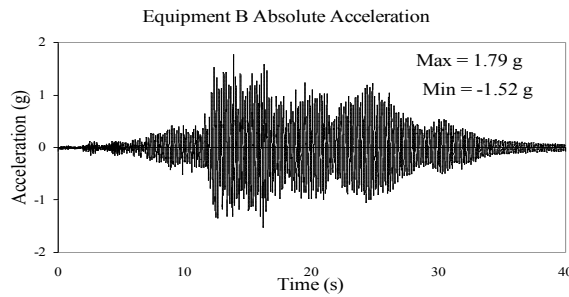
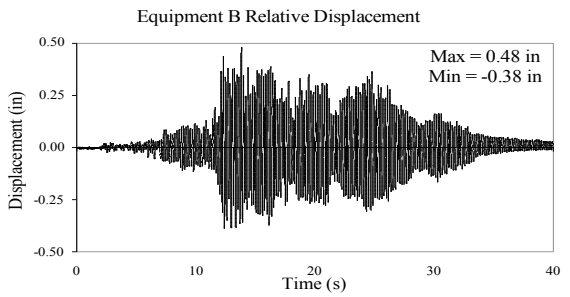
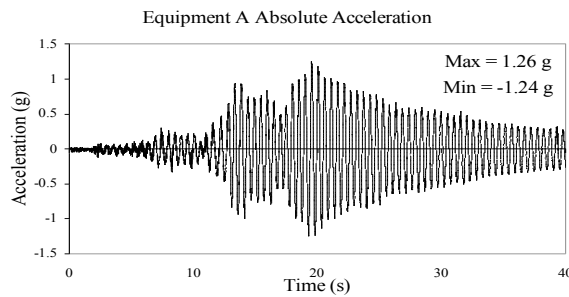
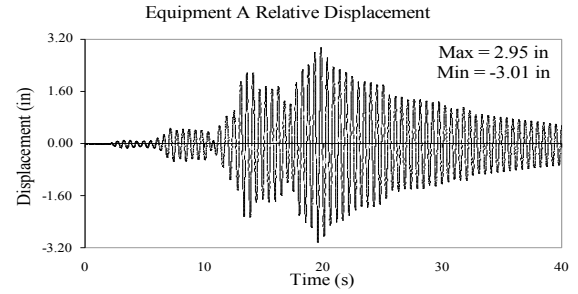
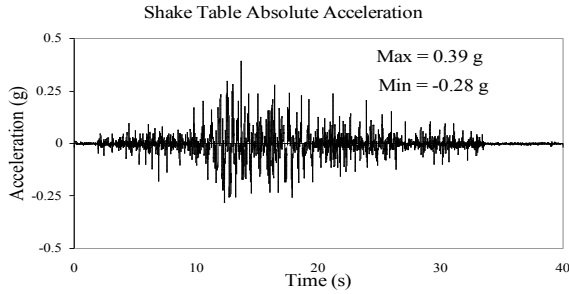
ACCELERATIONS AND DISPLACEMENTS



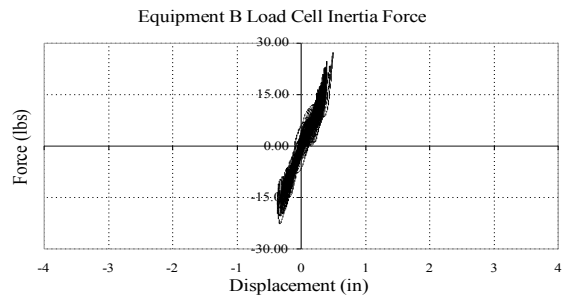
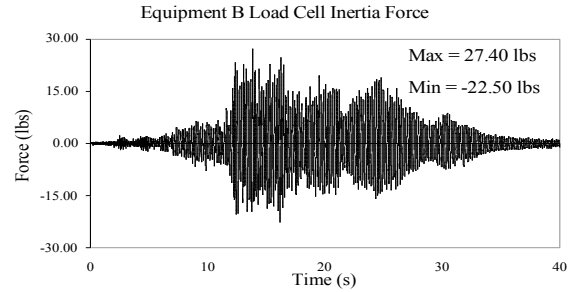
TEST RC-4 EQUIPMENT COMBINATION 2, UNCOUPLED NEWHALL GROUND MOTION, 30% SPAN CONNECTOR LONGITUDINAL FORCES



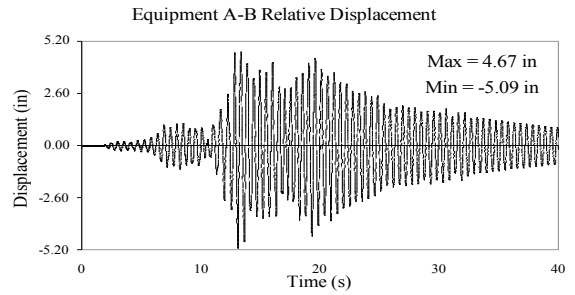
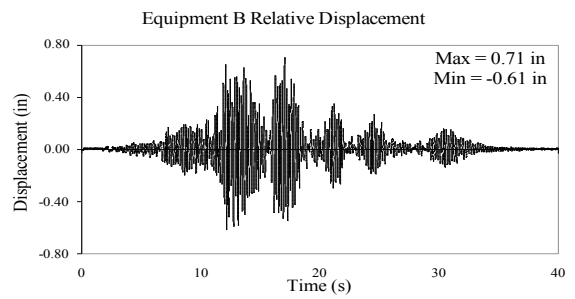
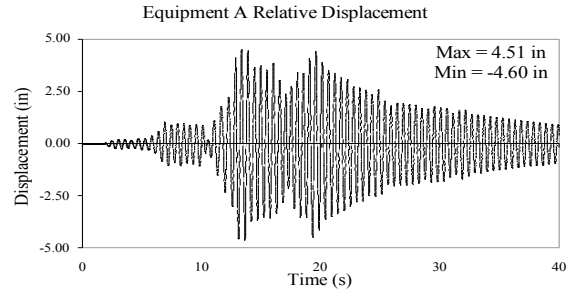
TEST RC-6 EQUIPMENT COMBINATION 2, UNCOUPLED TABAS GROUND MOTION, 25% SPAN ACCELERATIONS AND DISPLACEMENTS



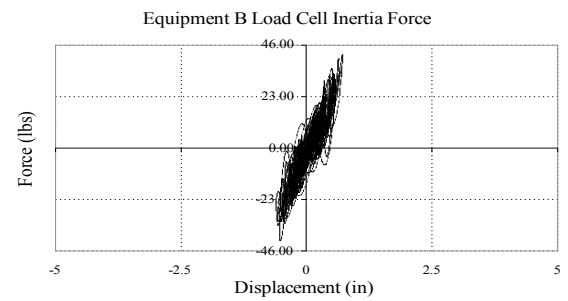
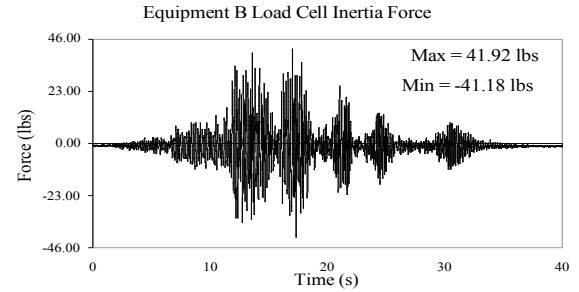
**TEST RC-6
EQUIPMENT COMBINATION 2, UNCOUPLED
TABAS GROUND MOTION, 25% SPAN
CONNECTOR LONGITUDINAL FORCES**



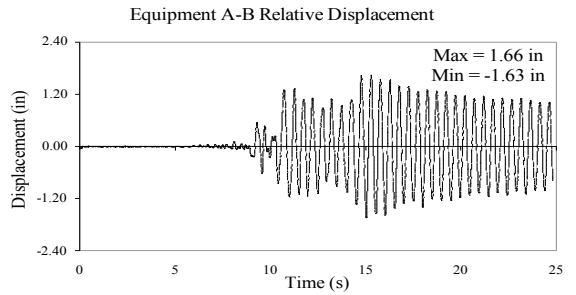
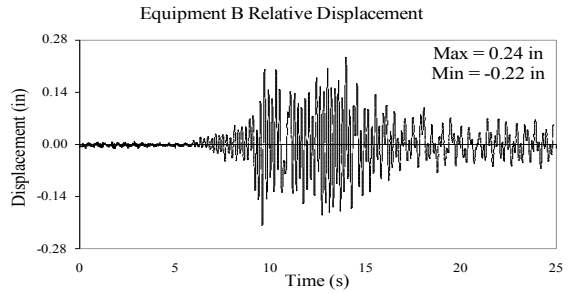
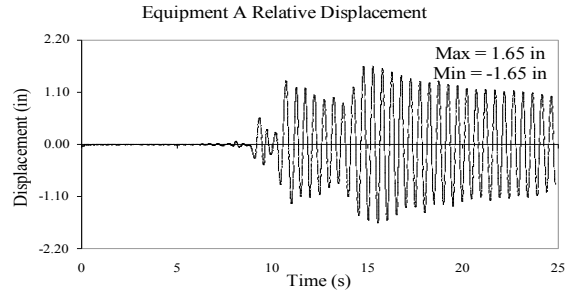
TEST RC-7
EQUIPMENT COMBINATION 2, UNCOUPLED
TABAS GROUND MOTION, 50% SPAN
ACCELERATIONS AND DISPLACEMENTS



TEST RC-7
EQUIPMENT COMBINATION 2, UNCOUPLED
TABAS GROUND MOTION, 50% SPAN
CONNECTOR LONGITUDINAL FORCES



**TEST RC-11
EQUIPMENT COMBINATION 2,
FLEXIBLE STRAP CONNECTOR
NEWHALL GROUND MOTION, 30% SPAN
ACCELERATIONS AND DISPLACEMENTS**

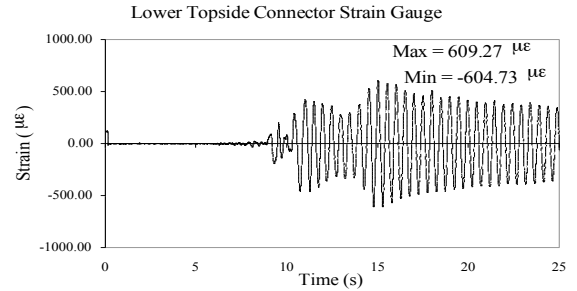
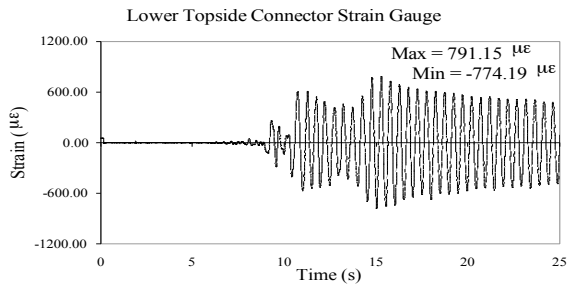
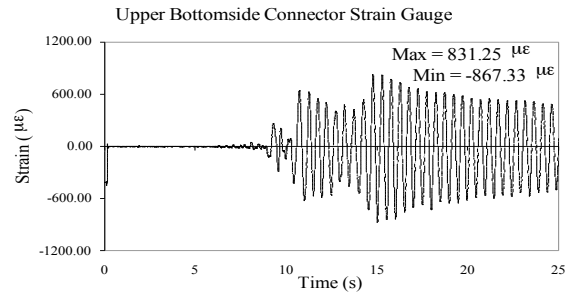
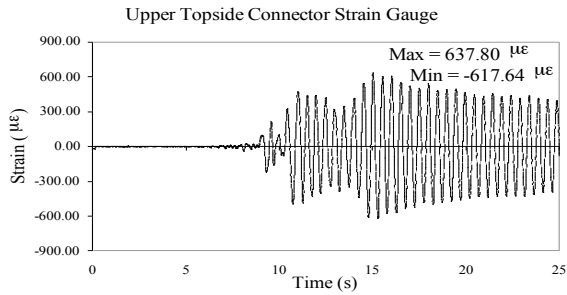
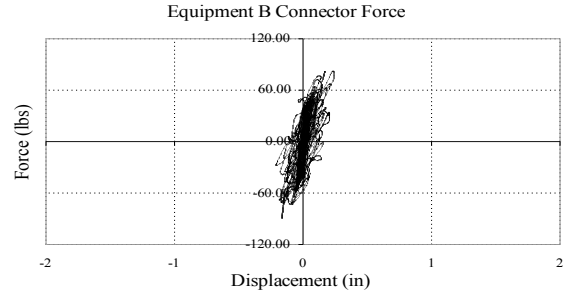
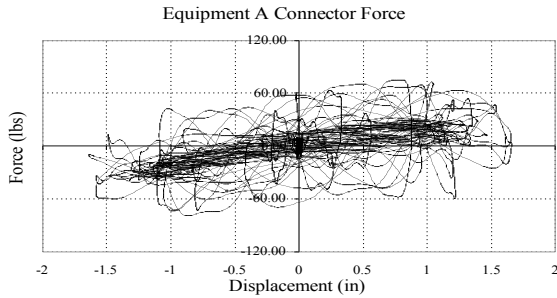
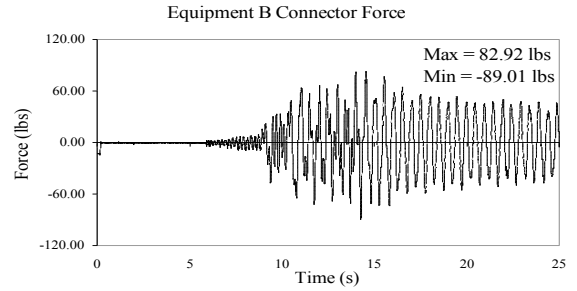
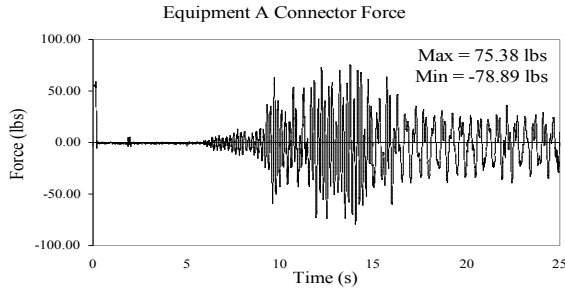


TEST RC-11

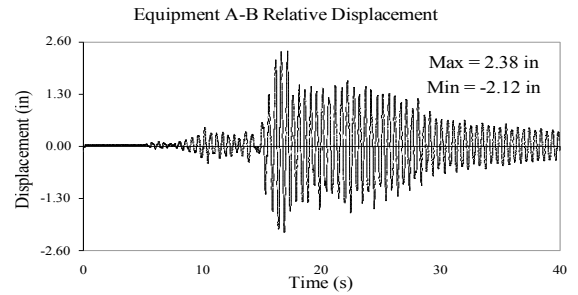
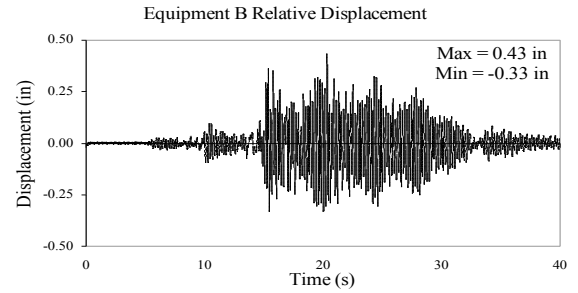
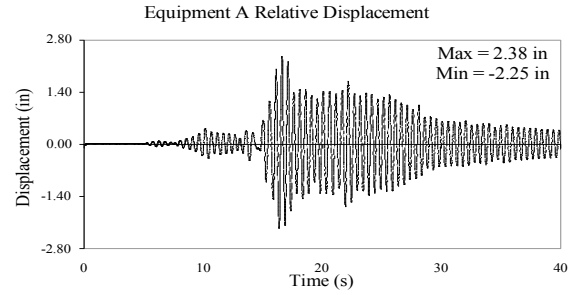
EQUIPMENT COMBINATION 2, FLEXIBLE STRAP CONNECTOR

NEWHALL GROUND MOTION, 30% SPAN

CONNECTOR LONGITUDINAL FORCES AND STRAINS



TEST RC-13
EQUIPMENT COMBINATION 2,
FLEXIBLE STRAP CONNECTOR
TABAS GROUND MOTION, 25% SPAN
ACCELERATIONS AND DISPLACEMENTS

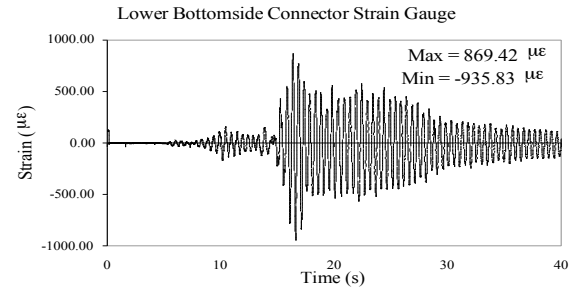
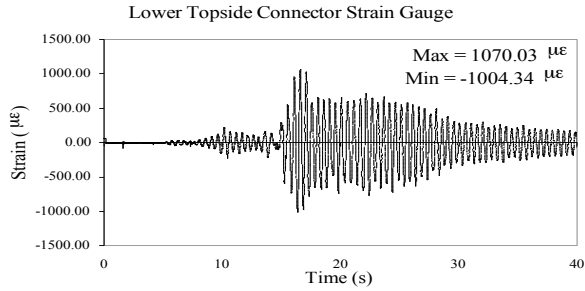
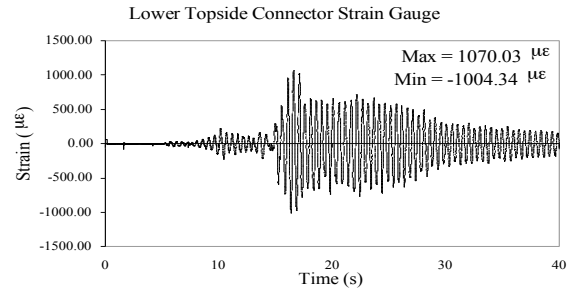
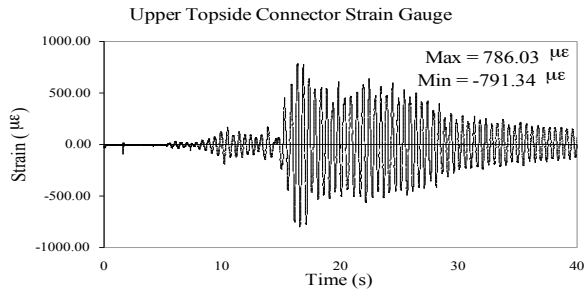
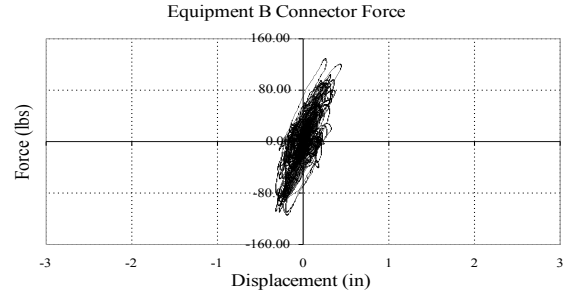
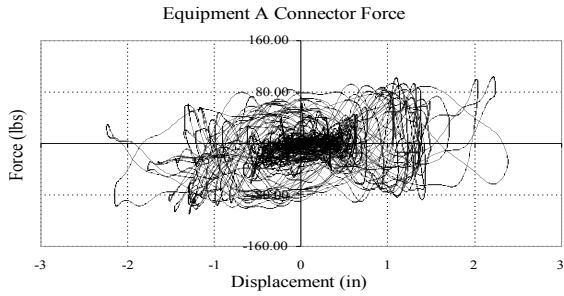
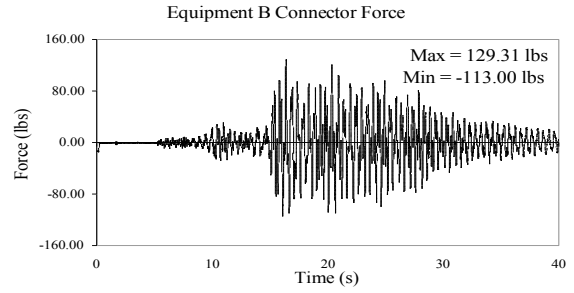
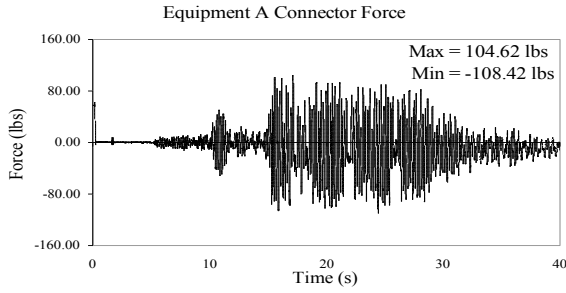


TEST RC-13

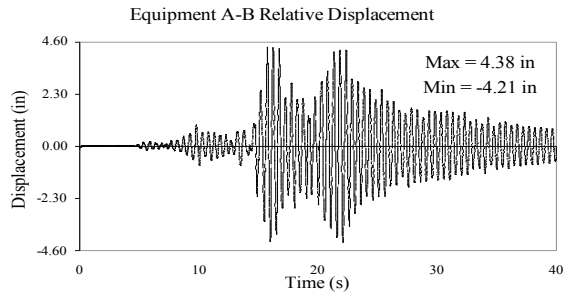
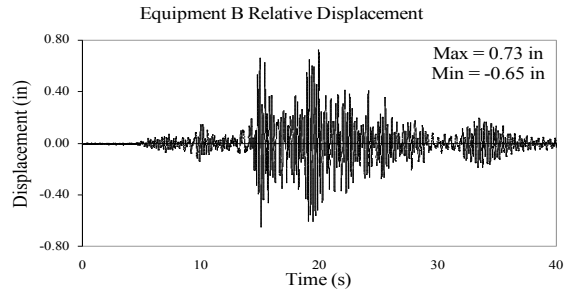
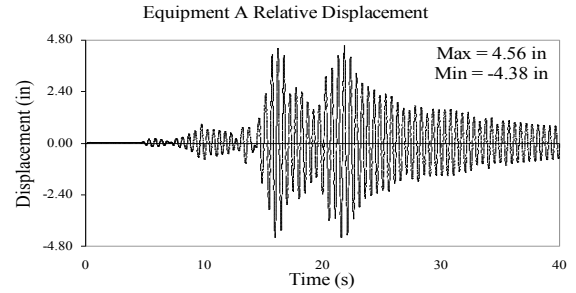
EQUIPMENT COMBINATION 2, FLEXIBLE STRAP CONNECTOR

TABAS GROUND MOTION, 25% SPAN

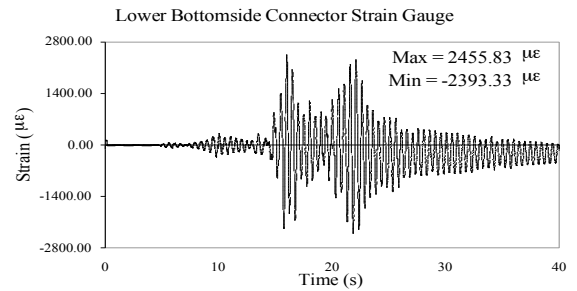
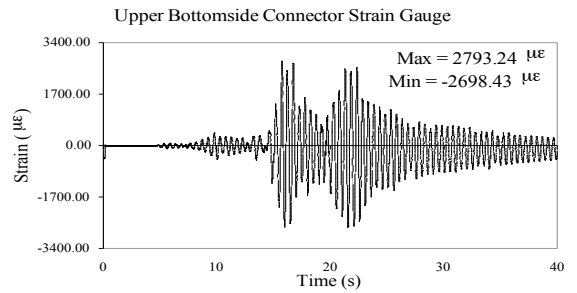
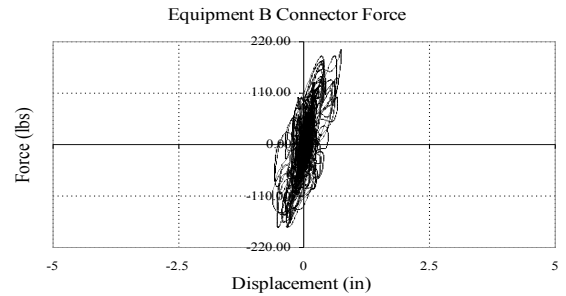
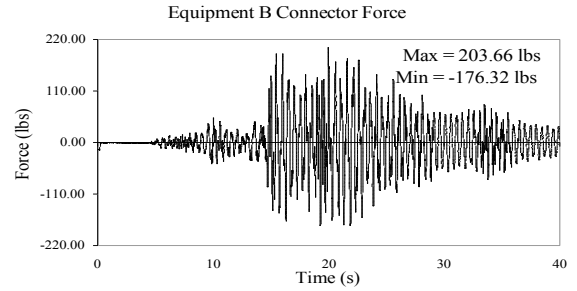
CONNECTOR LONGITUDINAL FORCES AND STRAINS



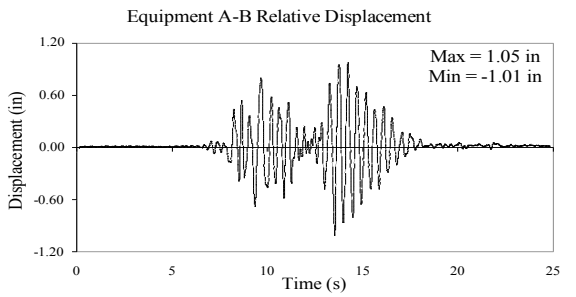
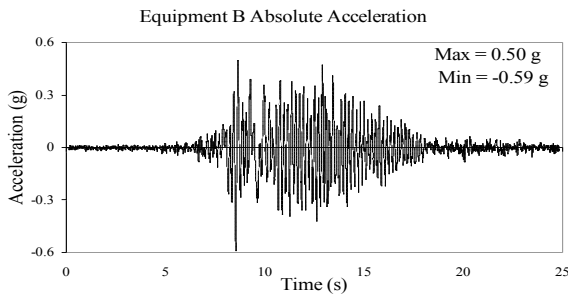
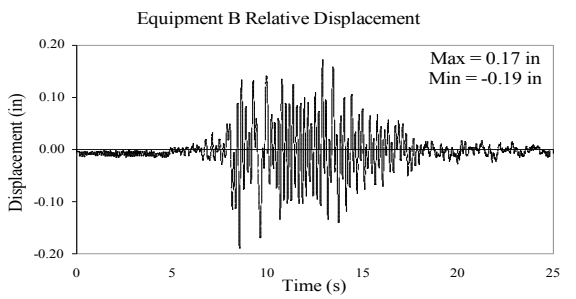
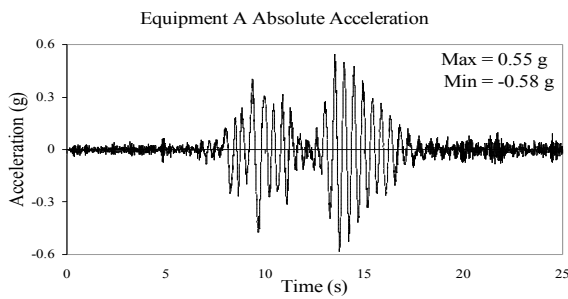
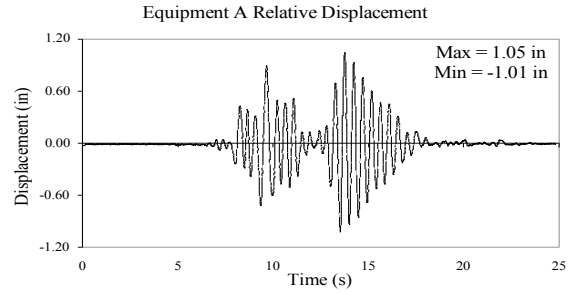
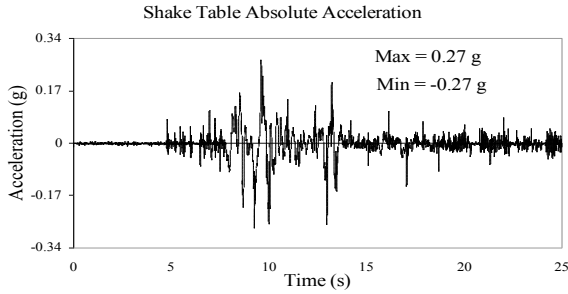
**TEST RC-14
EQUIPMENT COMBINATION 2,
FLEXIBLE STRAP CONNECTOR
TABAS GROUND MOTION, 50% SPAN
ACCELERATIONS AND DISPLACEMENTS**



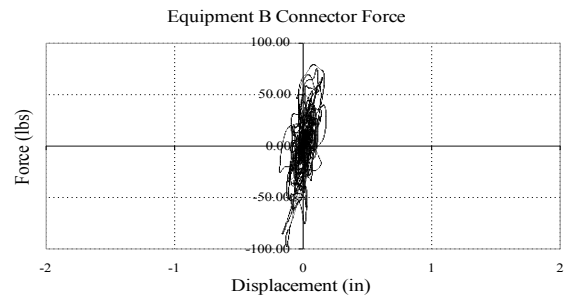
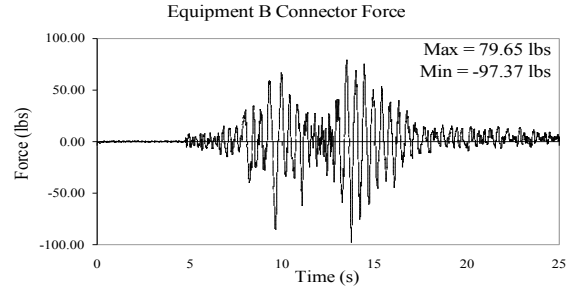
**TEST RC-14
EQUIPMENT COMBINATION 2,
FLEXIBLE STRAP CONNECTOR
TABAS GROUND MOTION, 50% SPAN
CONNECTOR LONGITUDINAL FORCES AND STRAINS**



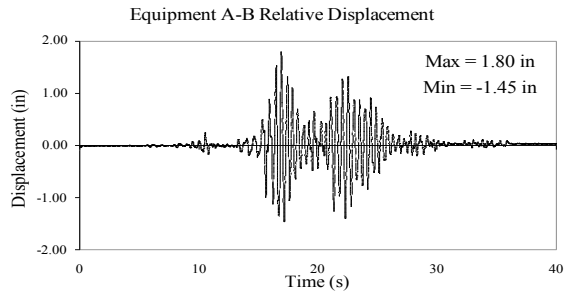
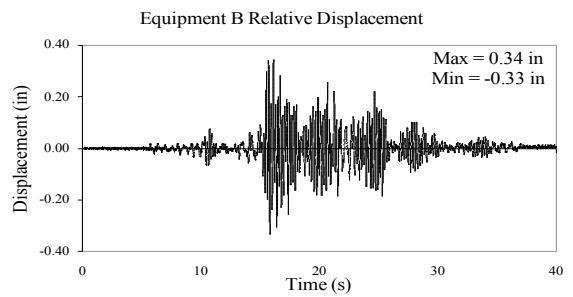
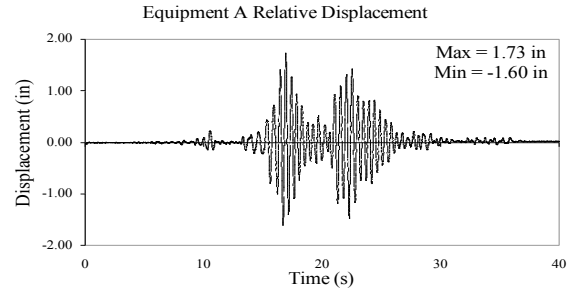
TEST RC-18
EQUIPMENT COMBINATION 2, BUS SLIDER CONNECTOR
NEWHALL GROUND MOTION, 30% SPAN
ACCELERATIONS AND DISPLACEMENTS



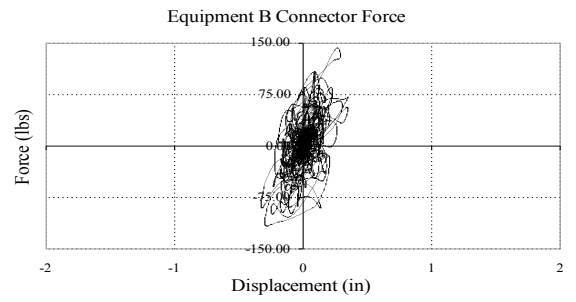
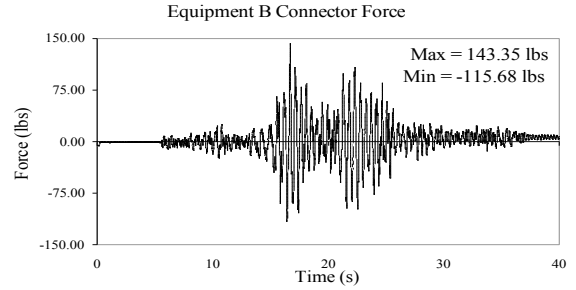
TEST RC-18
EQUIPMENT COMBINATION 2, BUS SLIDER CONNECTOR
NEWHALL GROUND MOTION, 30% SPAN
CONNECTOR LONGITUDINAL FORCES



TEST RC-20
EQUIPMENT COMBINATION 2, BUS SLIDER CONNECTOR
TABAS GROUND MOTION, 25% SPAN
ACCELERATIONS AND DISPLACEMENTS



TEST RC-20
EQUIPMENT COMBINATION 2, BUS SLIDER CONNECTOR
TABAS GROUND MOTION, 25% SPAN
CONNECTOR LONGITUDINAL FORCES

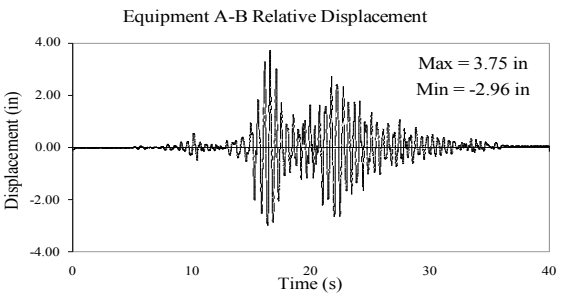
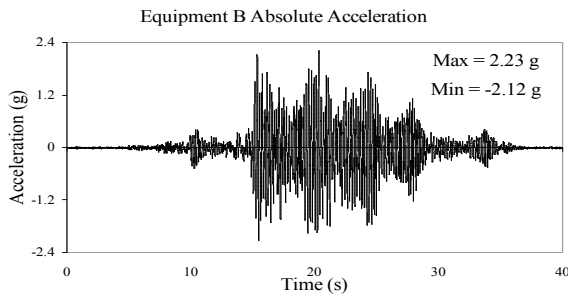
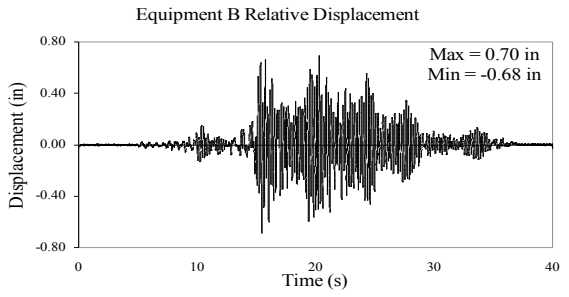
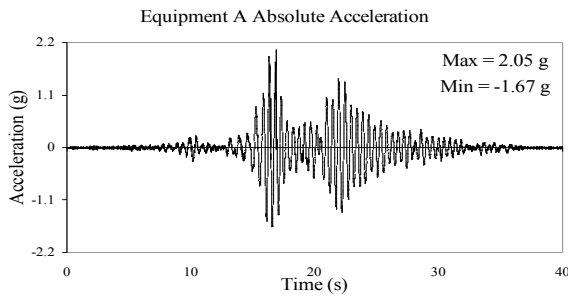
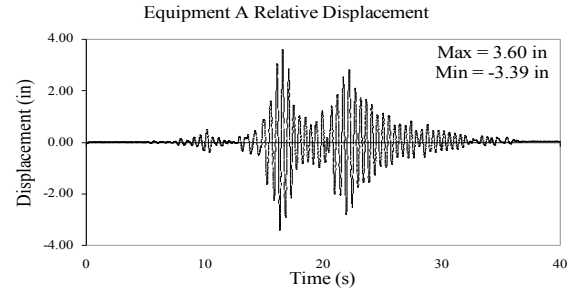
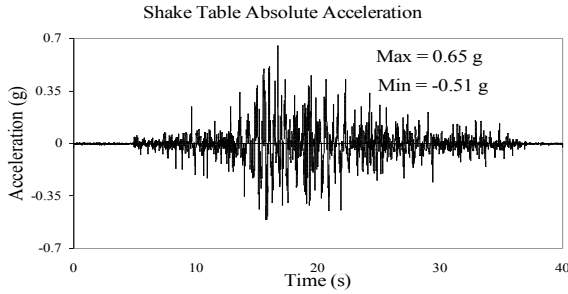


TEST RC-21

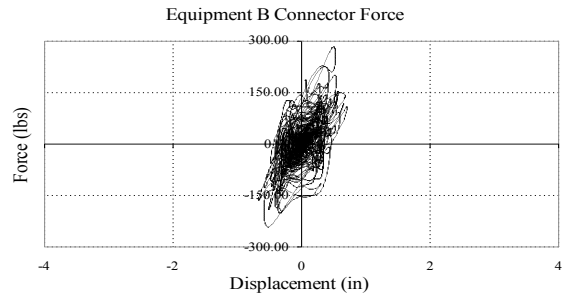
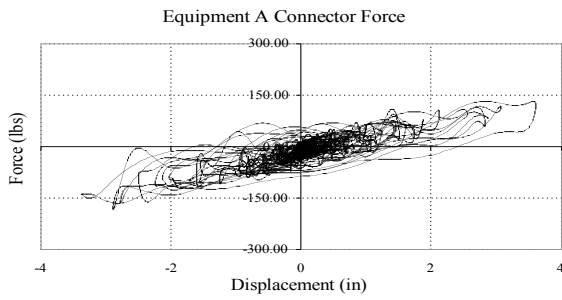
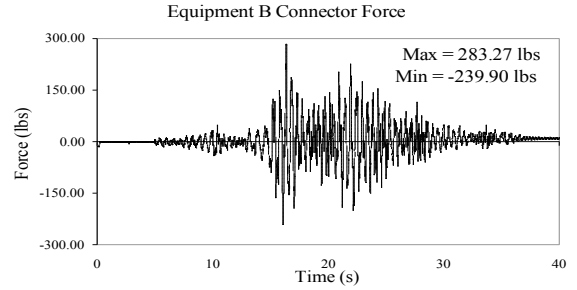
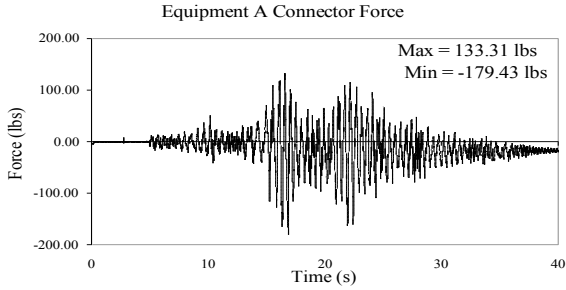
EQUIPMENT COMBINATION 2, BUS SLIDER CONNECTOR

TABAS GROUND MOTION, 50% SPAN

ACCELERATIONS AND DISPLACEMENTS



TEST RC-21
EQUIPMENT COMBINATION 2, BUS SLIDER CONNECTOR
TABAS GROUND MOTION, 50% SPAN
CONNECTOR LONGITUDINAL FORCES

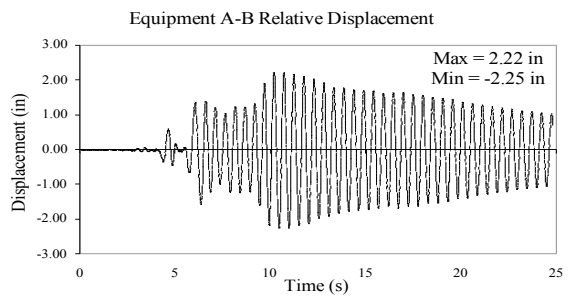
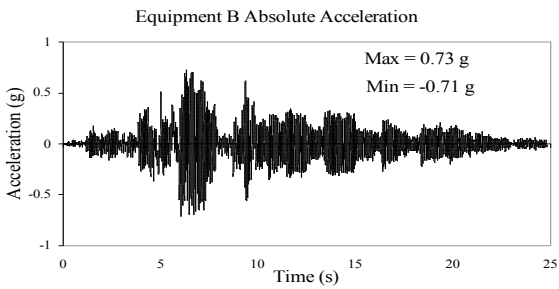
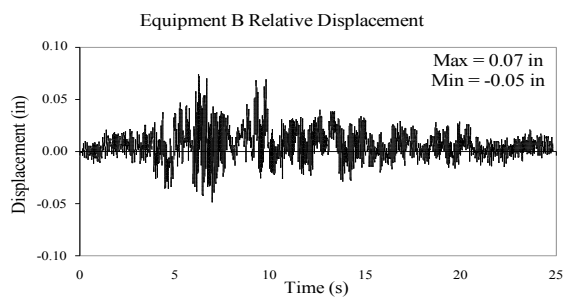
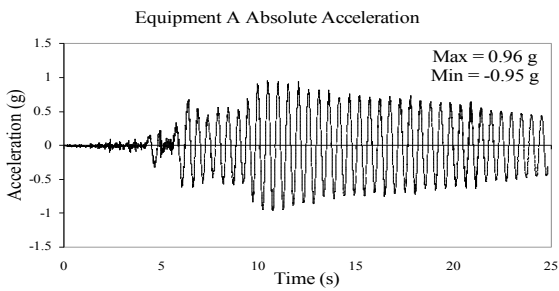
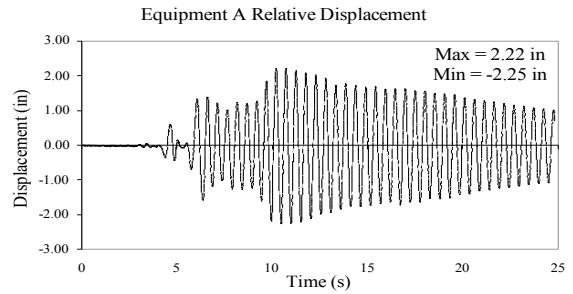
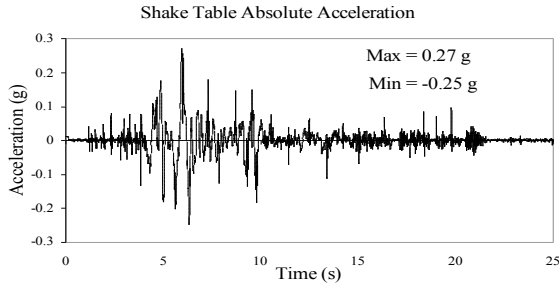


TEST RC-24

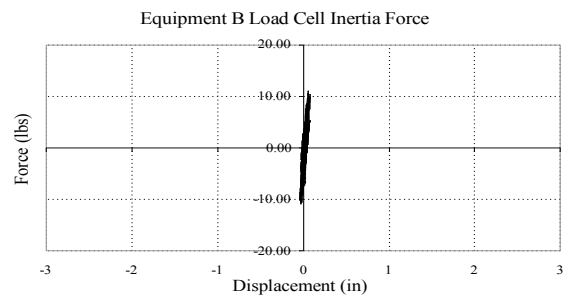
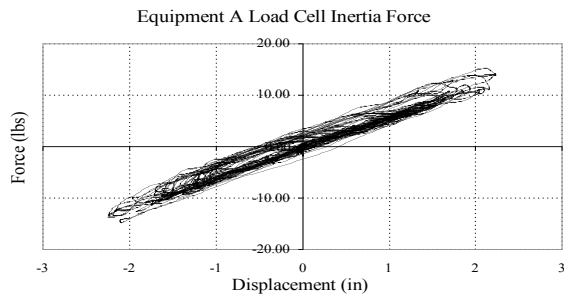
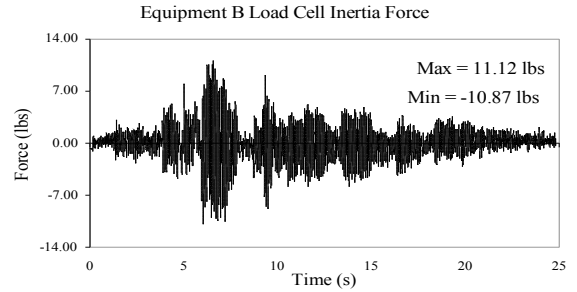
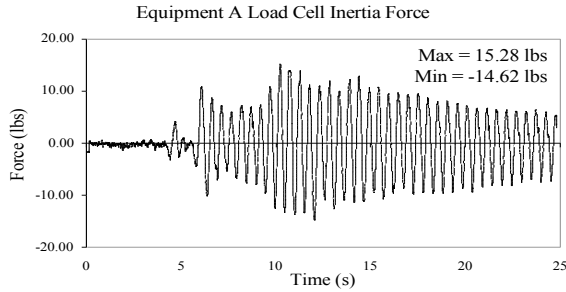
EQUIPMENT COMBINATION 5, UNCOUPLED

NEWHALL GROUND MOTION, 30% SPAN

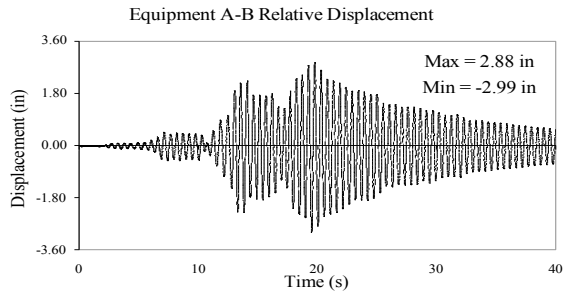
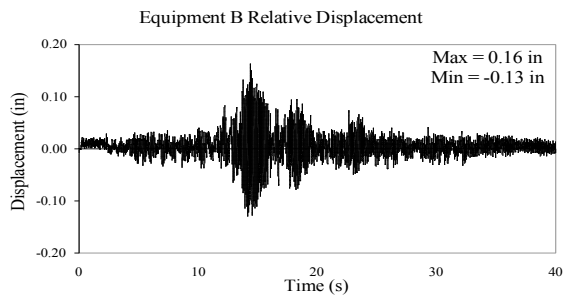
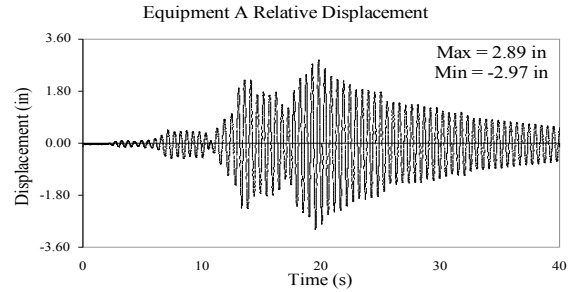
ACCELERATIONS AND DISPLACEMENTS



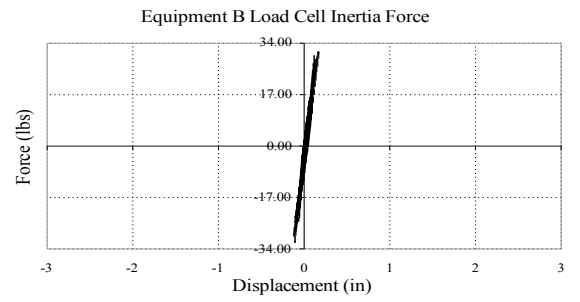
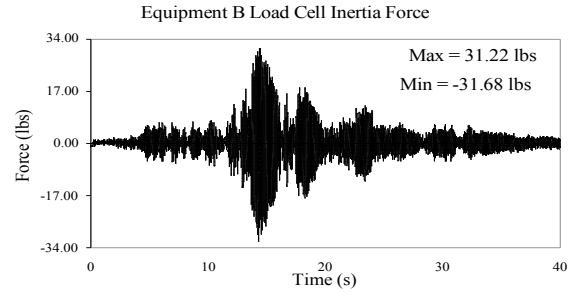
TEST RC-24
EQUIPMENT COMBINATION 5, UNCOUPLED
NEWHALL GROUND MOTION, 30% SPAN
CONNECTOR LONGITUDINAL FORCES



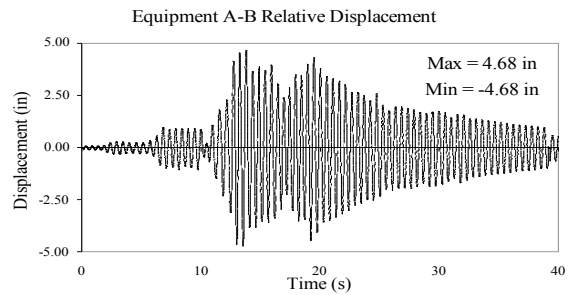
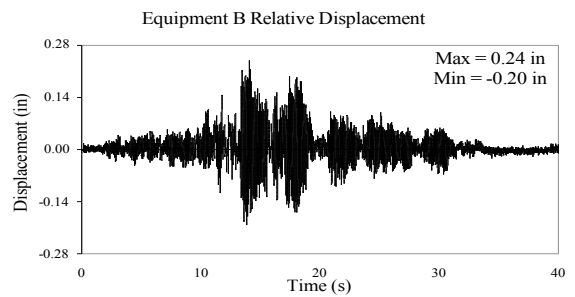
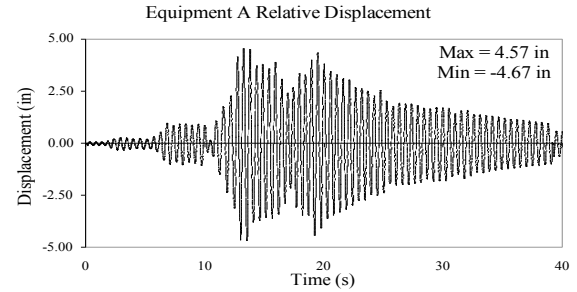
TEST RC-26
EQUIPMENT COMBINATION 5, UNCOUPLED
TABAS GROUND MOTION, 25% SPAN
ACCELERATIONS AND DISPLACEMENTS



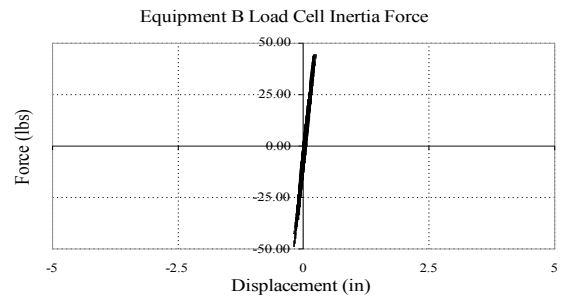
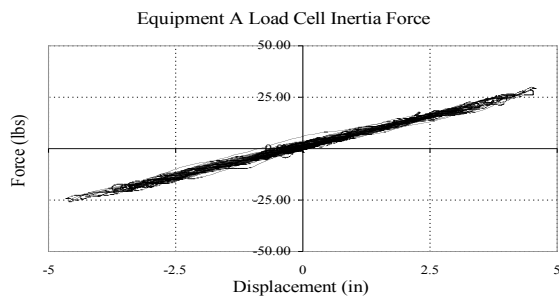
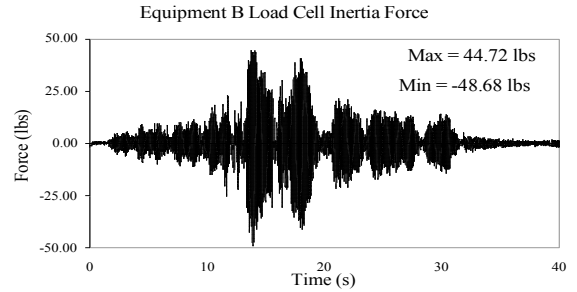
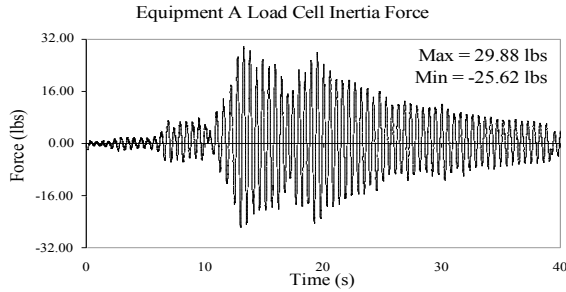
TEST RC-26
EQUIPMENT COMBINATION 5, UNCOUPLED
TABAS GROUND MOTION, 25% SPAN
CONNECTOR LONGITUDINAL FORCES



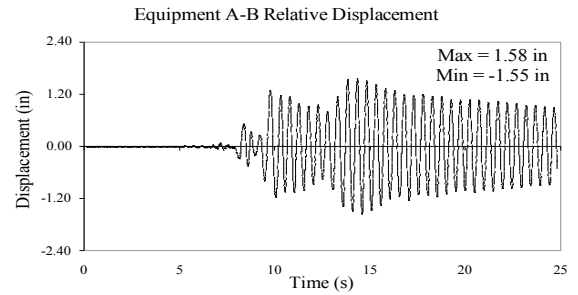
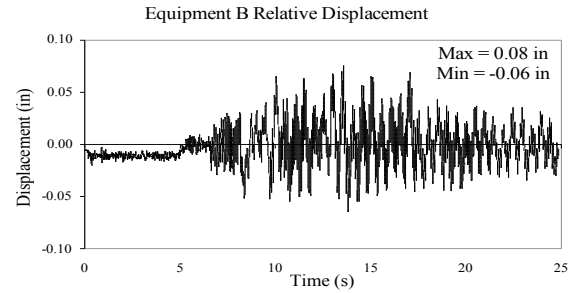
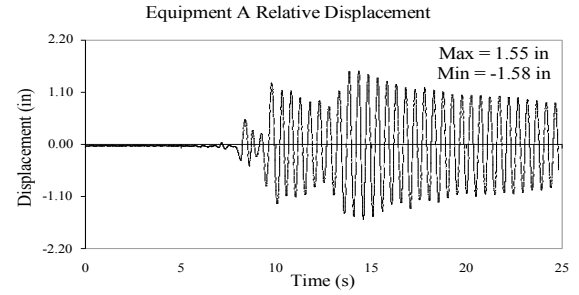
TEST RC-27
EQUIPMENT COMBINATION 5, UNCOUPLED
TABAS GROUND MOTION, 50% SPAN
ACCELERATIONS AND DISPLACEMENTS



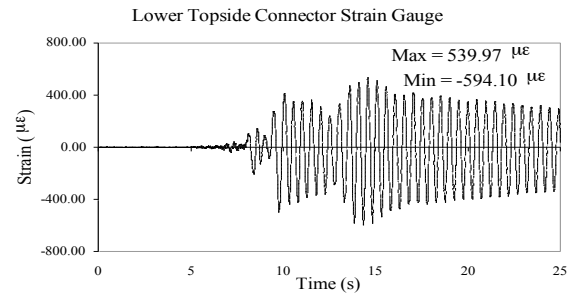
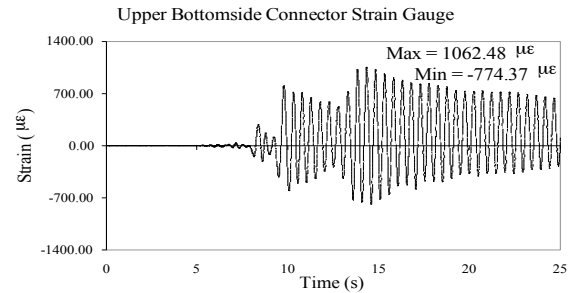
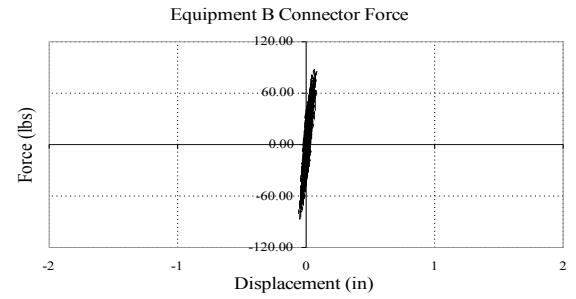
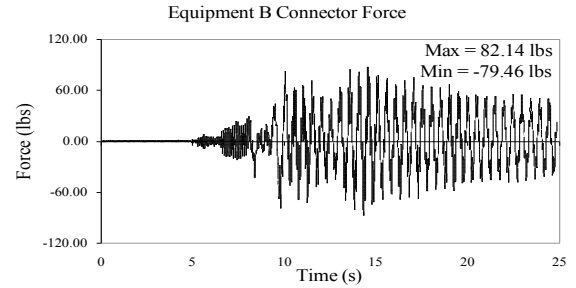
TEST RC-27
EQUIPMENT COMBINATION 5, UNCOUPLED
TABAS GROUND MOTION, 50% SPAN
CONNECTOR LONGITUDINAL FORCES



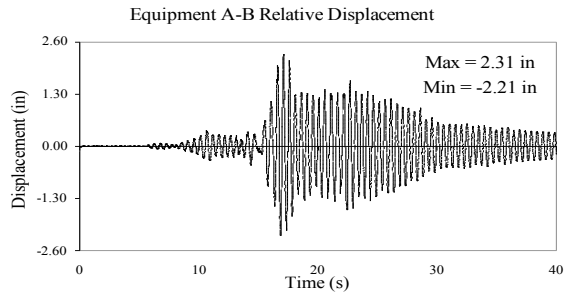
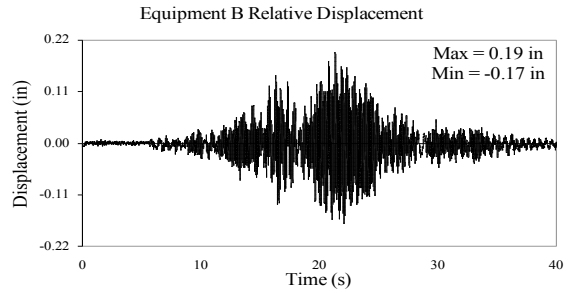
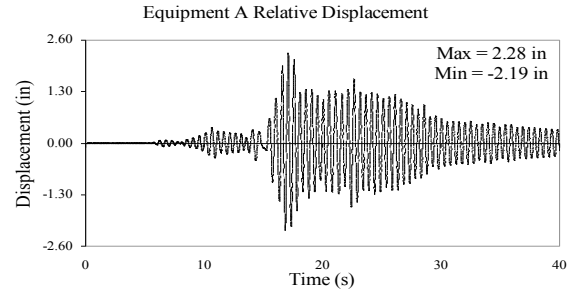
**TEST RC-31
EQUIPMENT COMBINATION 5,
FLEXIBLE STRAP CONNECTOR
NEWHALL GROUND MOTION, 30% SPAN
ACCELERATIONS AND DISPLACEMENTS**



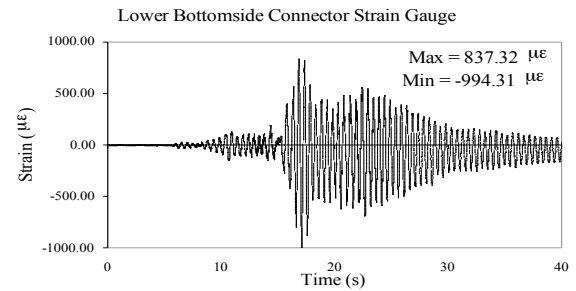
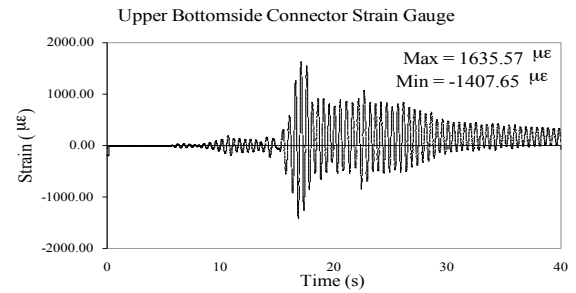
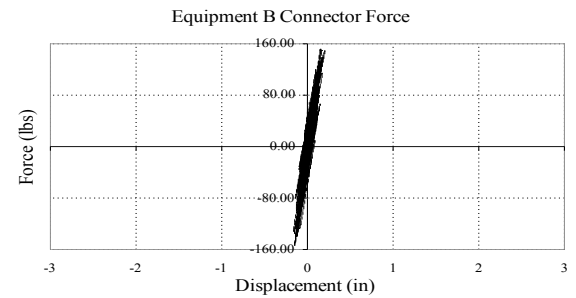
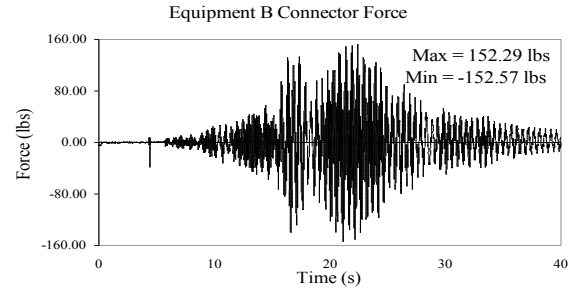
TEST RC-31
EQUIPMENT COMBINATION 5, FLEXIBLE STRAP
CONNECTOR
NEWHALL GROUND MOTION, 30% SPAN
CONNECTOR LONGITUDINAL FORCES AND STRAINS



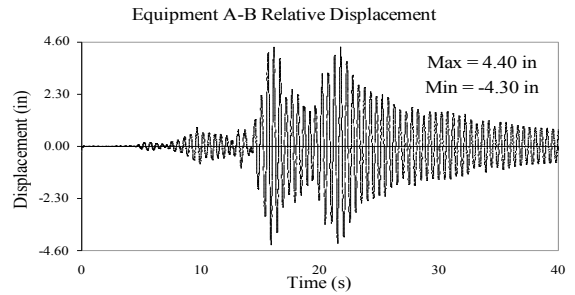
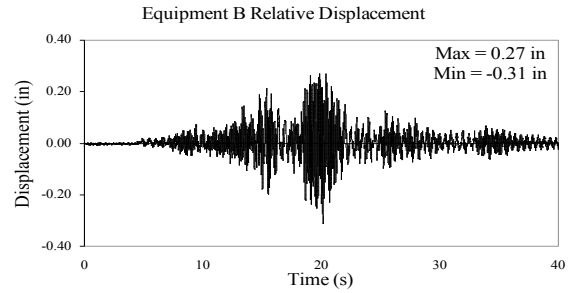
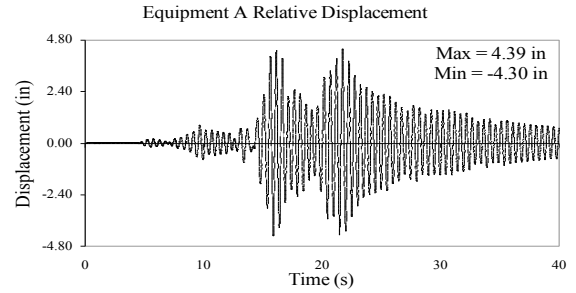
**TEST RC-33
EQUIPMENT COMBINATION 5,
FLEXIBLE STRAP CONNECTOR
TABAS GROUND MOTION, 25% SPAN
ACCELERATIONS AND DISPLACEMENTS**



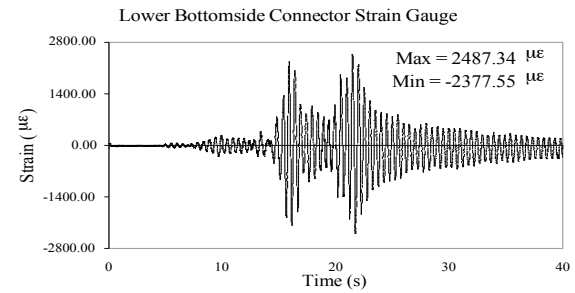
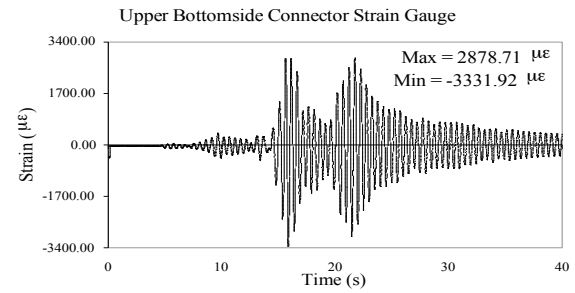
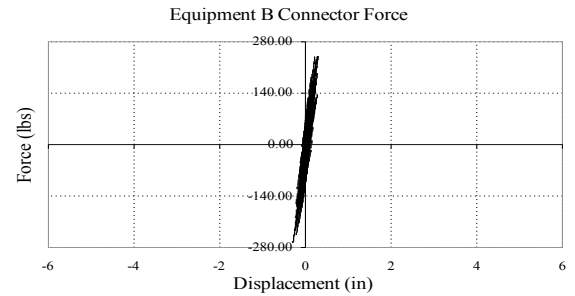
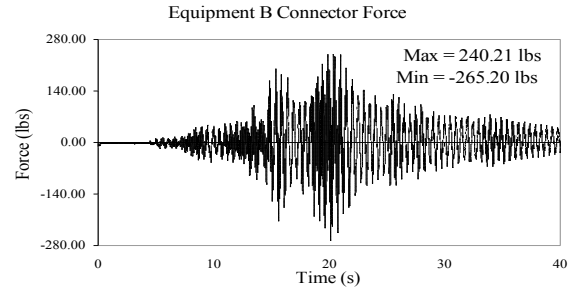
**TEST RC-33
EQUIPMENT COMBINATION 5,
FLEXIBLE STRAP CONNECTOR
TABAS GROUND MOTION, 25% SPAN
CONNECTOR LONGITUDINAL FORCES AND STRAINS**



**TEST RC-34
EQUIPMENT COMBINATION 5,
FLEXIBLE STRAP CONNECTOR
TABAS GROUND MOTION, 50% SPAN
ACCELERATIONS AND DISPLACEMENTS**



**TEST RC-34
EQUIPMENT COMBINATION 5,
FLEXIBLE STRAP CONNECTOR
TABAS GROUND MOTION, 50% SPAN
CONNECTOR LONGITUDINAL FORCES AND STRAINS**

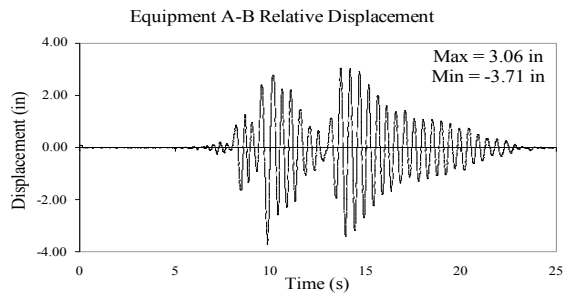
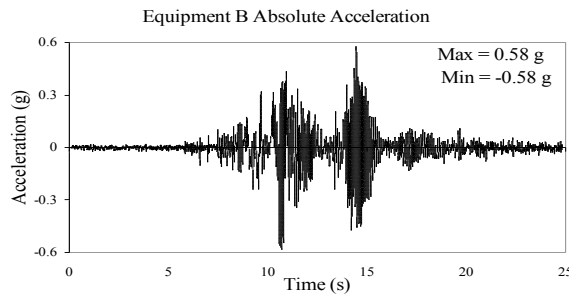
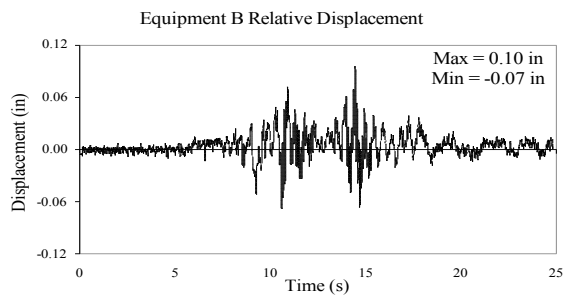
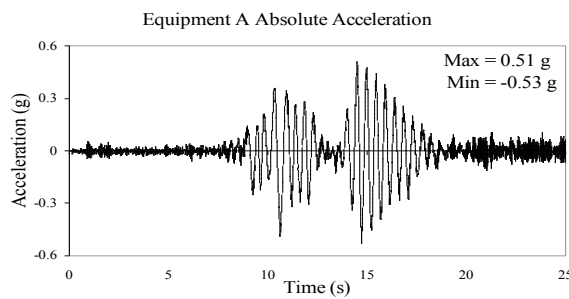
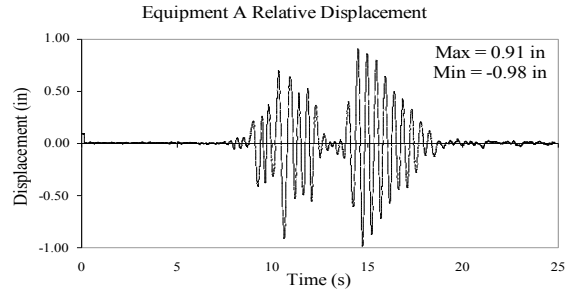
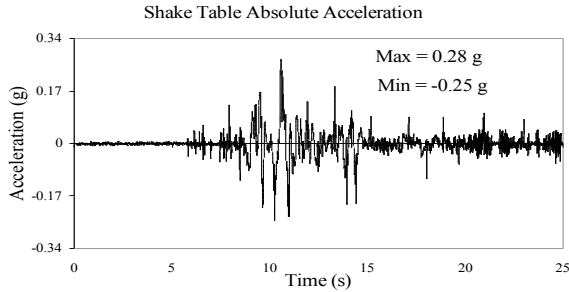


TEST RC-38

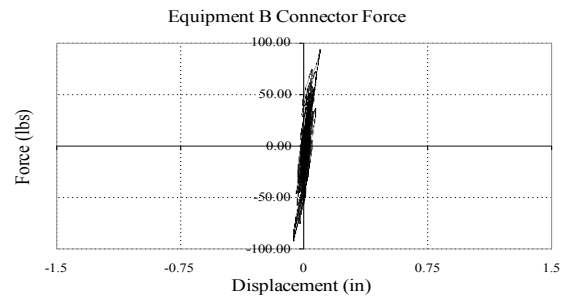
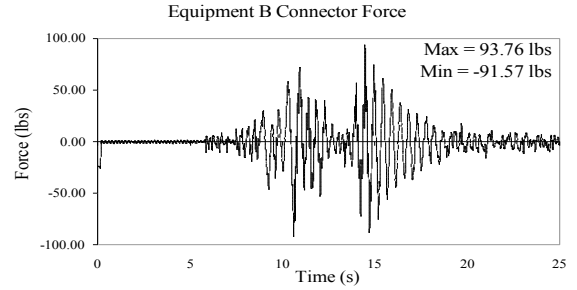
EQUIPMENT COMBINATION 5, BUS SLIDER CONNECTOR

NEWHALL GROUND MOTION, 30% SPAN

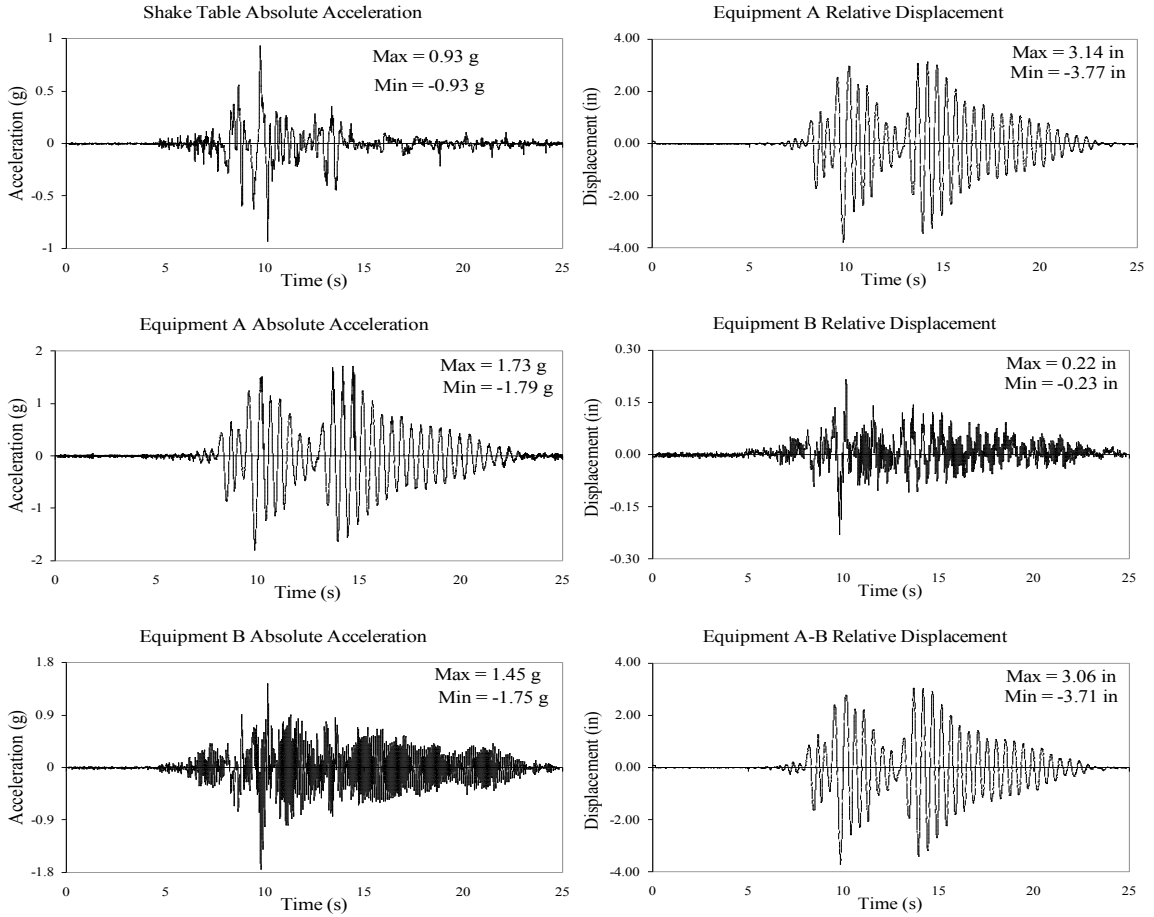
ACCELERATIONS AND DISPLACEMENTS



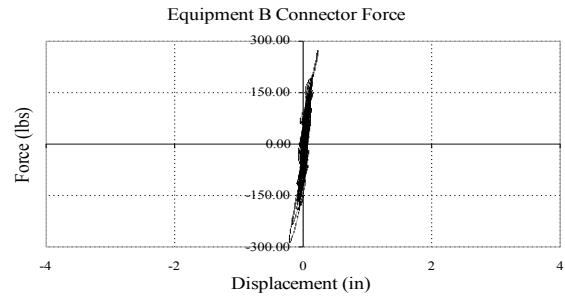
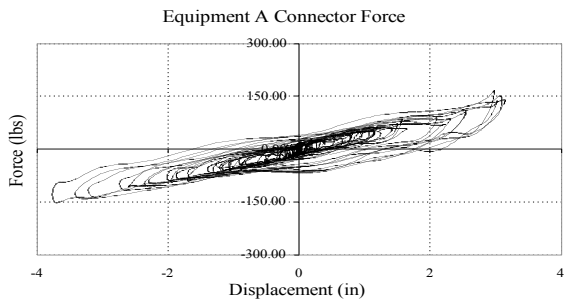
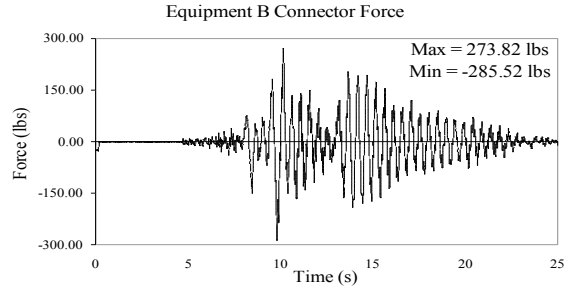
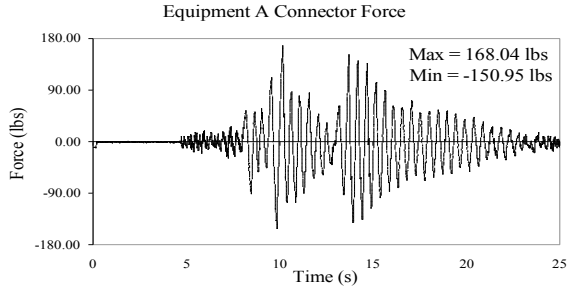
TEST RC-38
EQUIPMENT COMBINATION 5, BUS SLIDER CONNECTOR
NEWHALL GROUND MOTION, 30% SPAN
CONNECTOR LONGITUDINAL FORCES



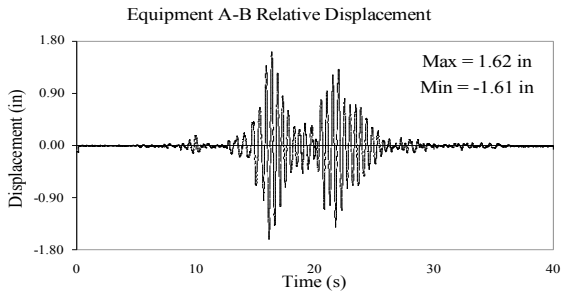
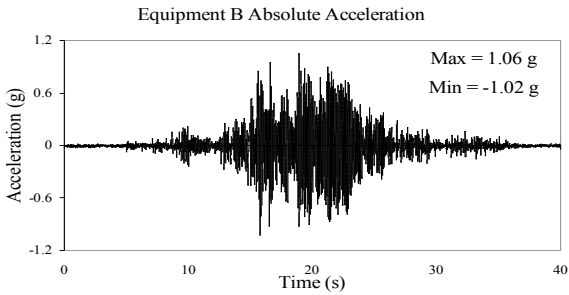
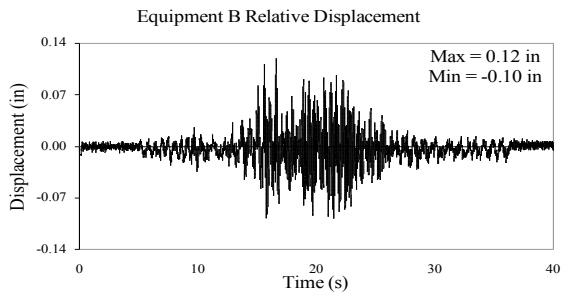
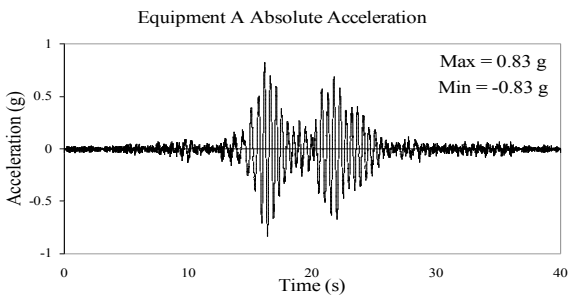
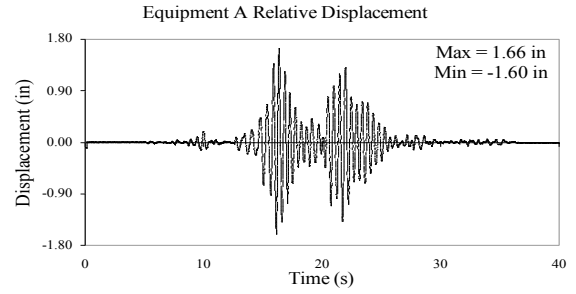
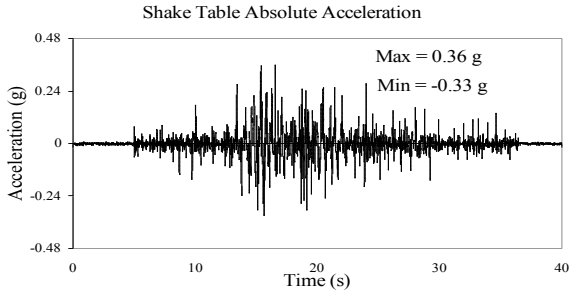
TEST RC-39
EQUIPMENT COMBINATION 5, BUS SLIDER CONNECTOR
NEWHALL GROUND MOTION, 100% SPAN
ACCELERATIONS AND DISPLACEMENTS



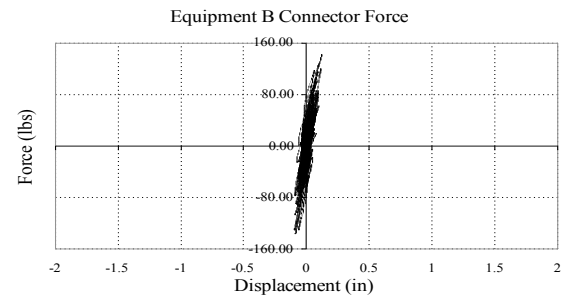
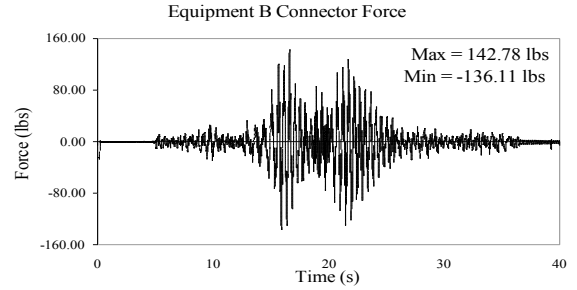
TEST RC-39
EQUIPMENT COMBINATION 5, BUS SLIDER CONNECTOR
NEWHALL GROUND MOTION, 100% SPAN
CONNECTOR LONGITUDINAL FORCES



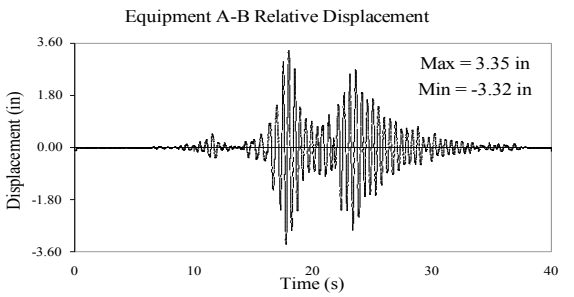
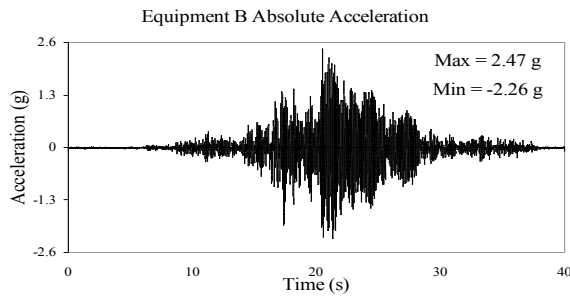
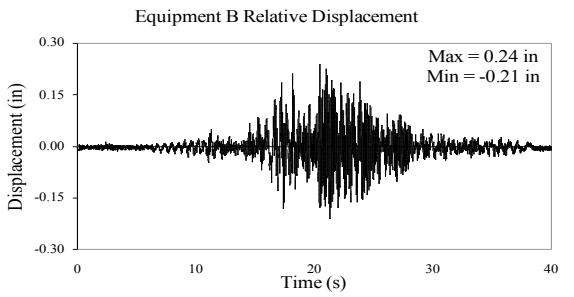
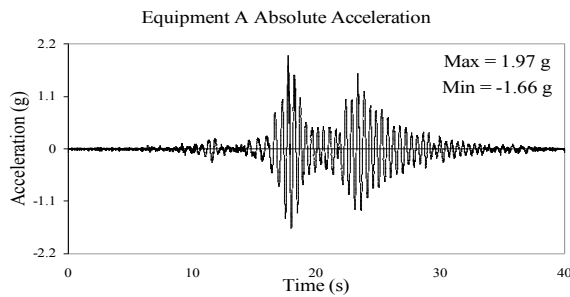
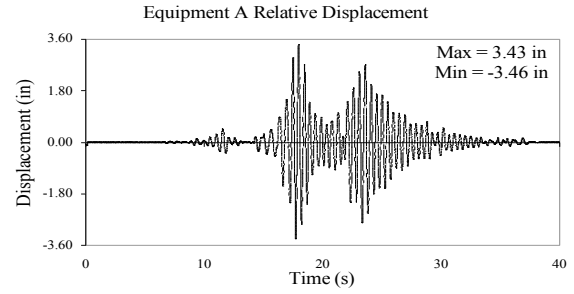
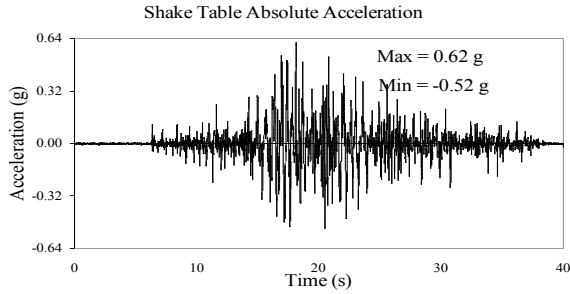
TEST RC-40
EQUIPMENT COMBINATION 5, BUS SLIDER CONNECTOR
TABAS GROUND MOTION, 25% SPAN
ACCELERATIONS AND DISPLACEMENTS



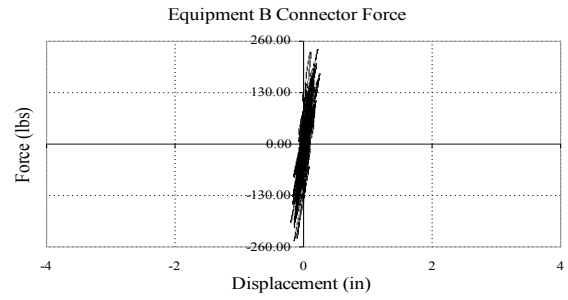
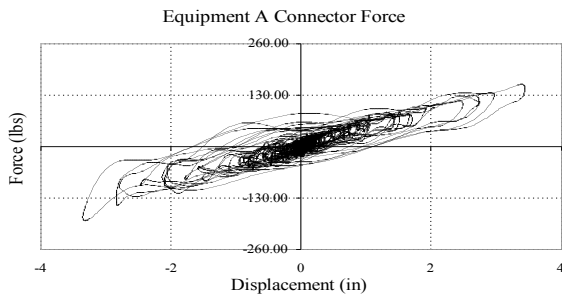
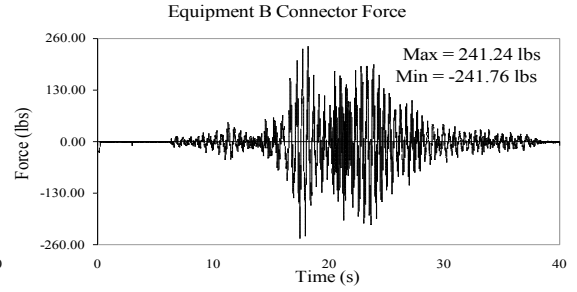
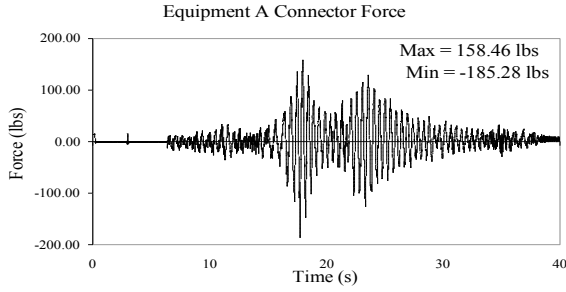
TEST RC-40
EQUIPMENT COMBINATION 5, BUS SLIDER CONNECTOR
TABAS GROUND MOTION, 25% SPAN
CONNECTOR LONGITUDINAL FORCES



TEST RC-41
EQUIPMENT COMBINATION 5, BUS SLIDER CONNECTOR
TABAS GROUND MOTION, 50% SPAN
ACCELERATIONS AND DISPLACEMENTS



TEST RC-41
EQUIPMENT COMBINATION 5, BUS SLIDER CONNECTOR
TABAS GROUND MOTION, 50% SPAN
CONNECTOR LONGITUDINAL FORCES

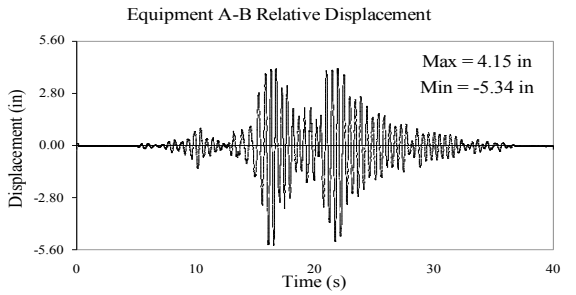
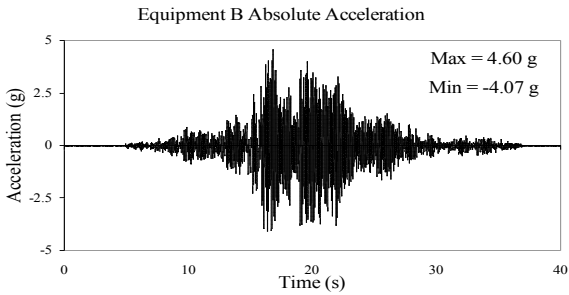
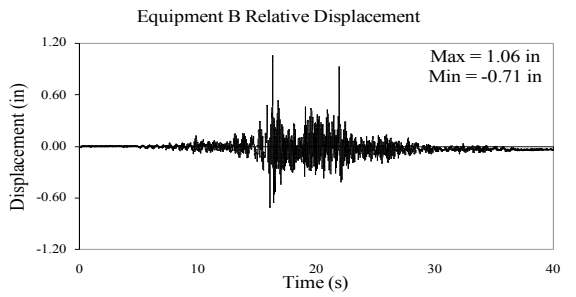
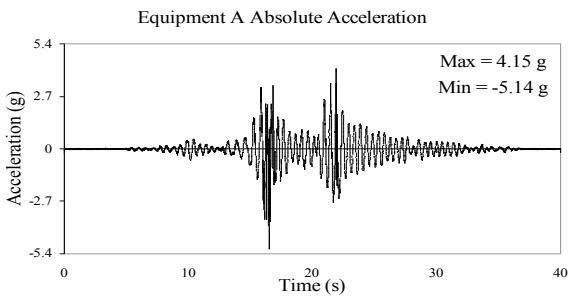
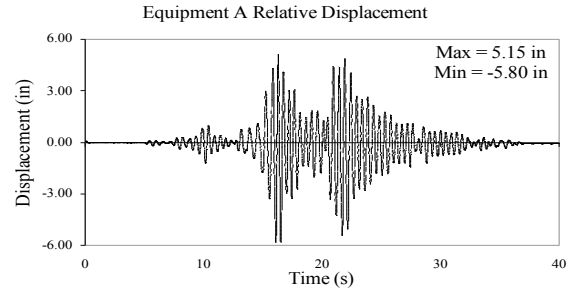
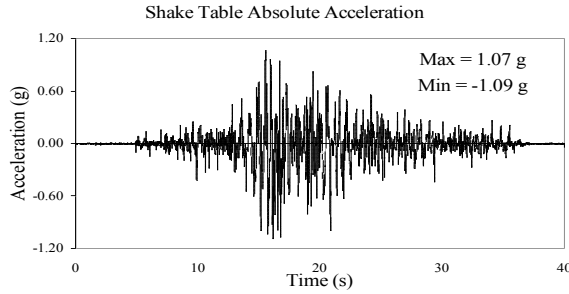


TEST RC-41B

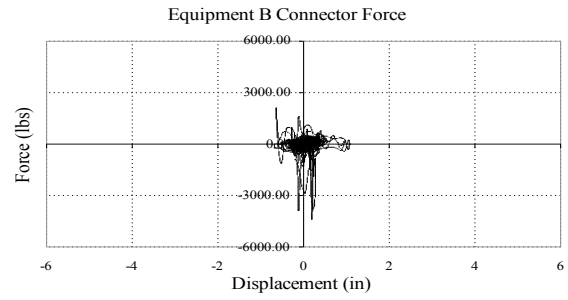
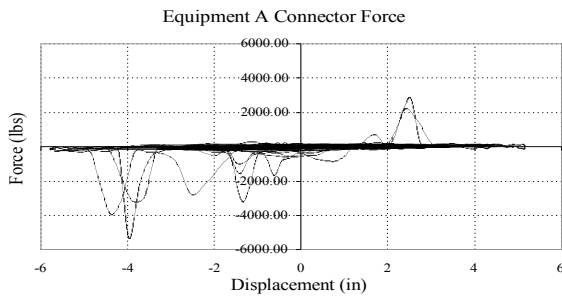
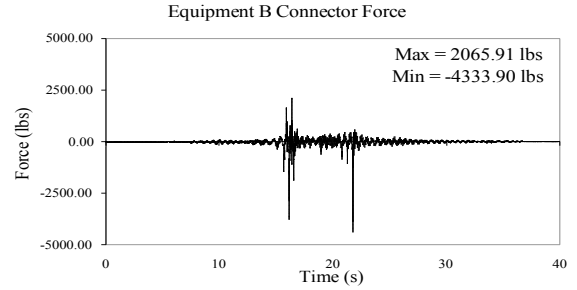
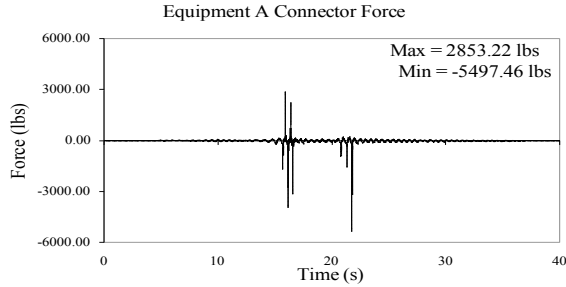
EQUIPMENT COMBINATION 5, BUS SLIDER CONNECTOR

TABAS GROUND MOTION, 100% SPAN

ACCELERATIONS AND DISPLACEMENTS



TEST RC-41B
EQUIPMENT COMBINATION 5, BUS SLIDER CONNECTOR
TABAS GROUND MOTION, 100% SPAN
CONNECTOR LONGITUDINAL FORCES

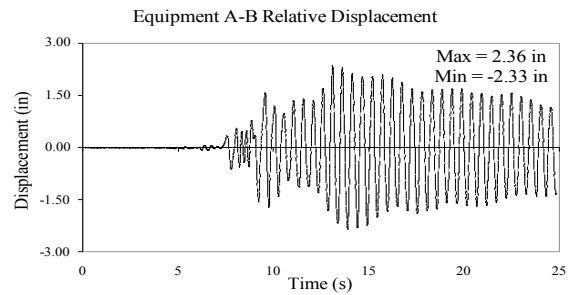
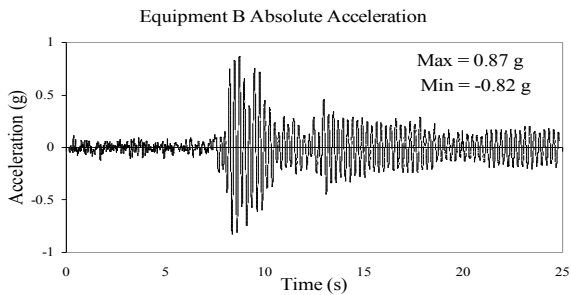
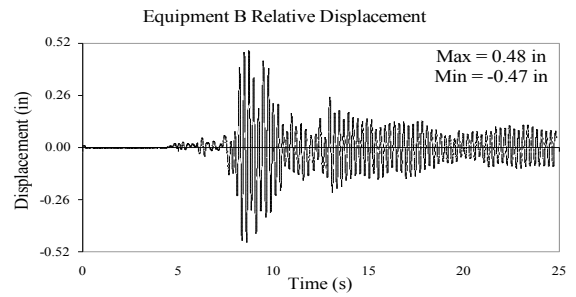
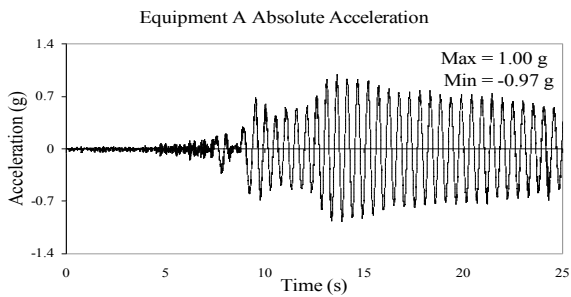
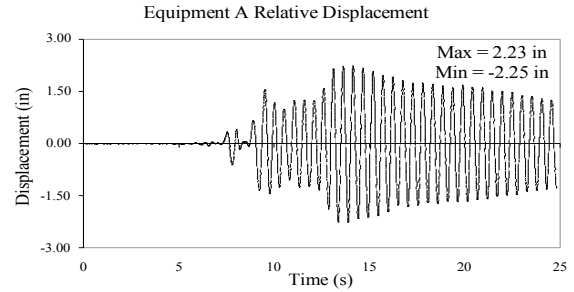
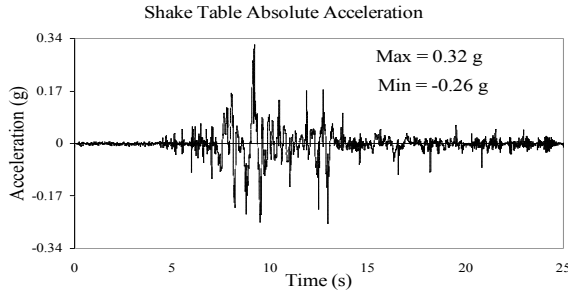


TEST RC-44

EQUIPMENT COMBINATION 1, UNCOUPLED

NEWHALL GROUND MOTION, 30% SPAN

ACCELERATIONS AND DISPLACEMENTS

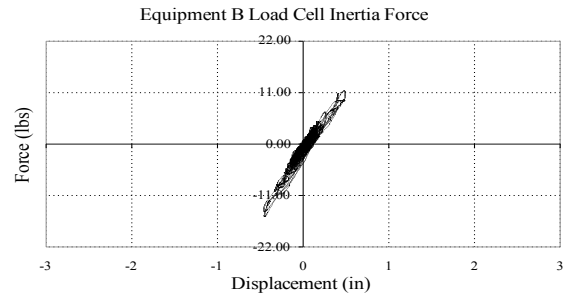
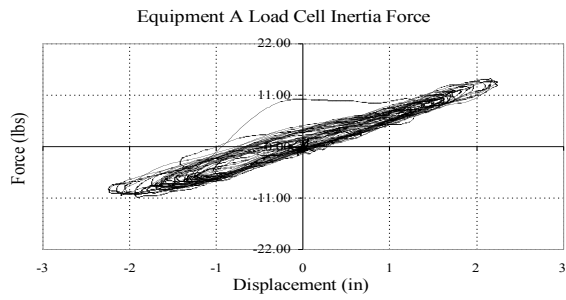
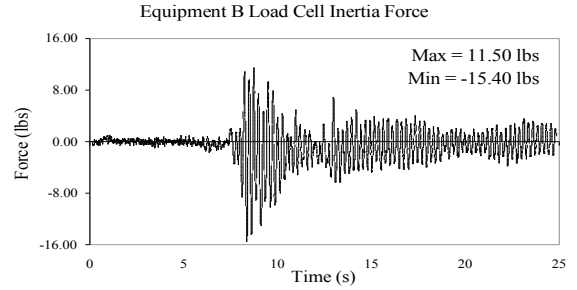
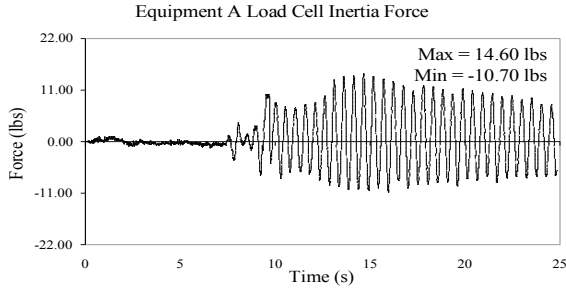


TEST RC-44

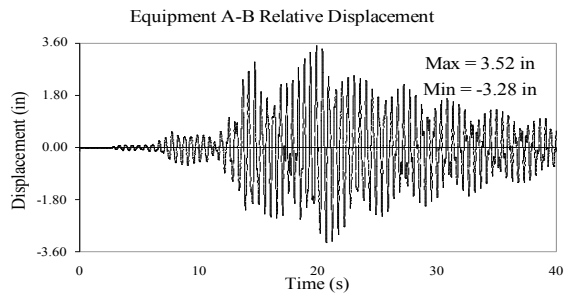
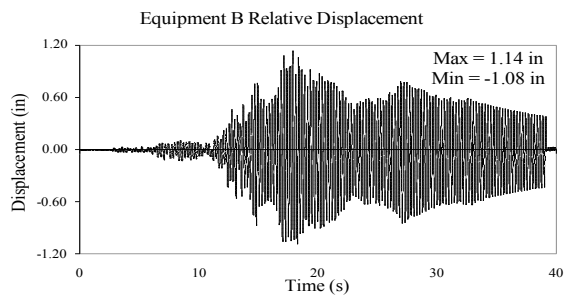
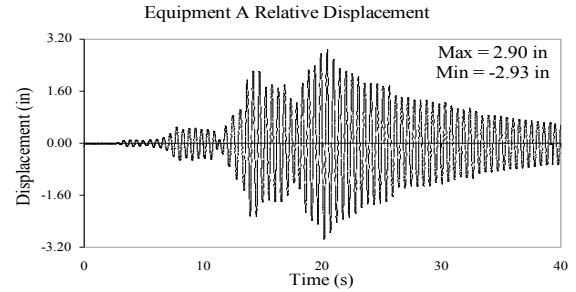
EQUIPMENT COMBINATION 1, UNCOUPLED

NEWHALL GROUND MOTION, 30% SPAN

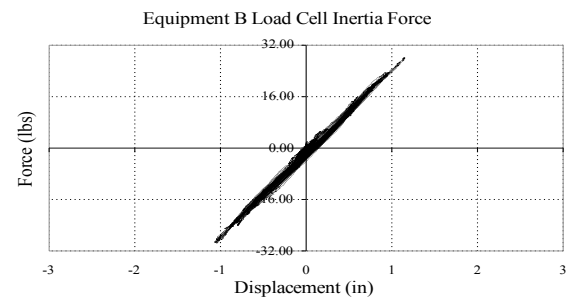
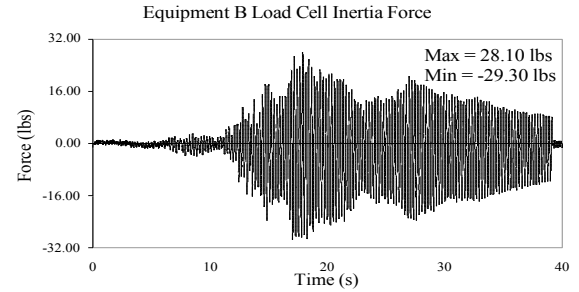
CONNECTOR LONGITUDINAL FORCES



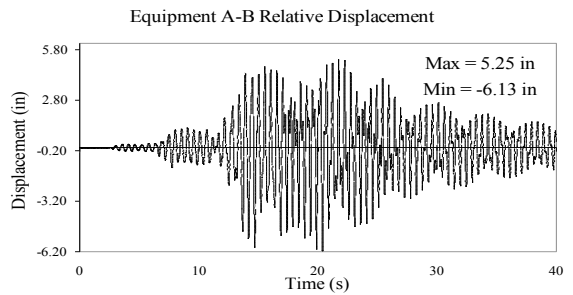
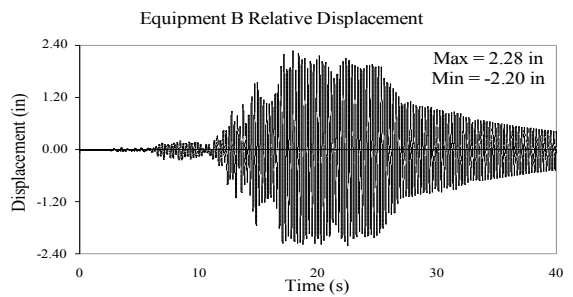
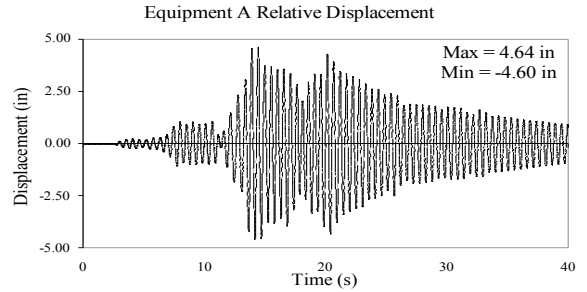
TEST RC-46
EQUIPMENT COMBINATION 1, UNCOUPLED
TABAS GROUND MOTION, 25% SPAN
ACCELERATIONS AND DISPLACEMENTS



TEST RC-46
EQUIPMENT COMBINATION 1, UNCOUPLED
TABAS GROUND MOTION, 25% SPAN
CONNECTOR LONGITUDINAL FORCES



TEST RC-47
EQUIPMENT COMBINATION 1, UNCOUPLED
TABAS GROUND MOTION, 50% SPAN
ACCELERATIONS AND DISPLACEMENTS



TEST RC-47 EQUIPMENT COMBINATION 1, UNCOUPLED TABAS GROUND MOTION, 50% SPAN CONNECTOR LONGITUDINAL FORCES

