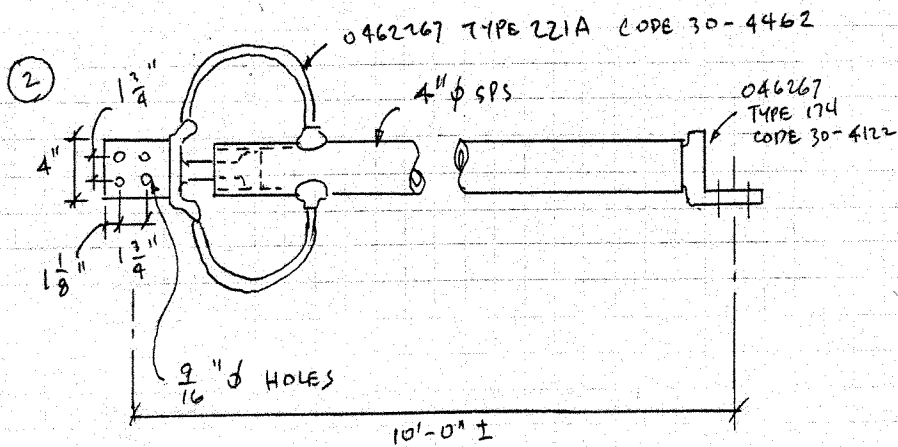
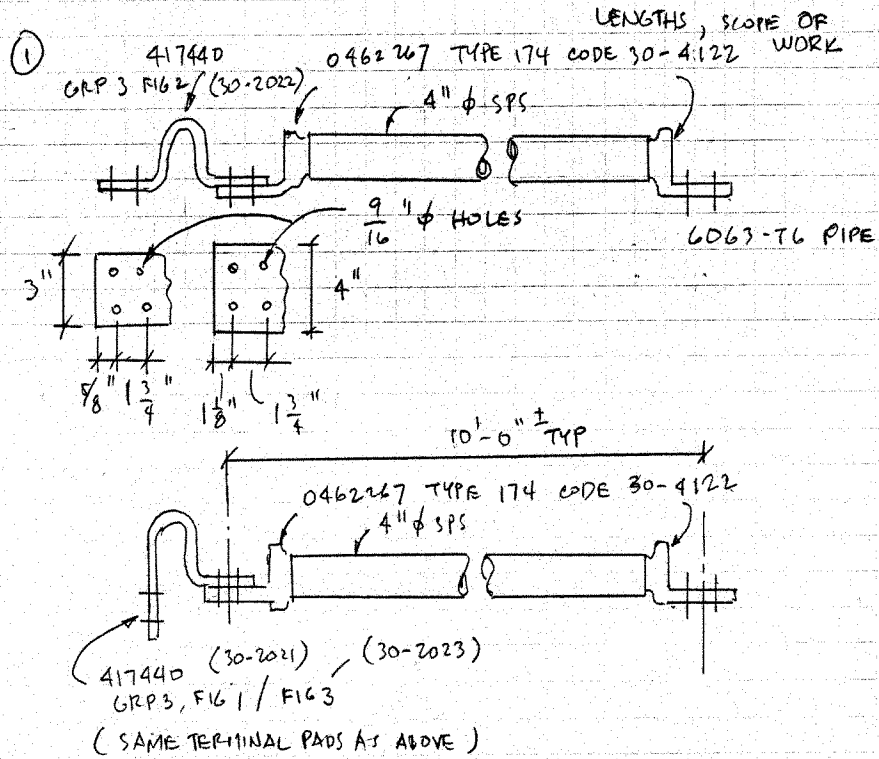


APPENDIX A

DRAWINGS OF RIGID BUS CONNECTOR SPECIMENS

SUBJECT PEER TASK 2C

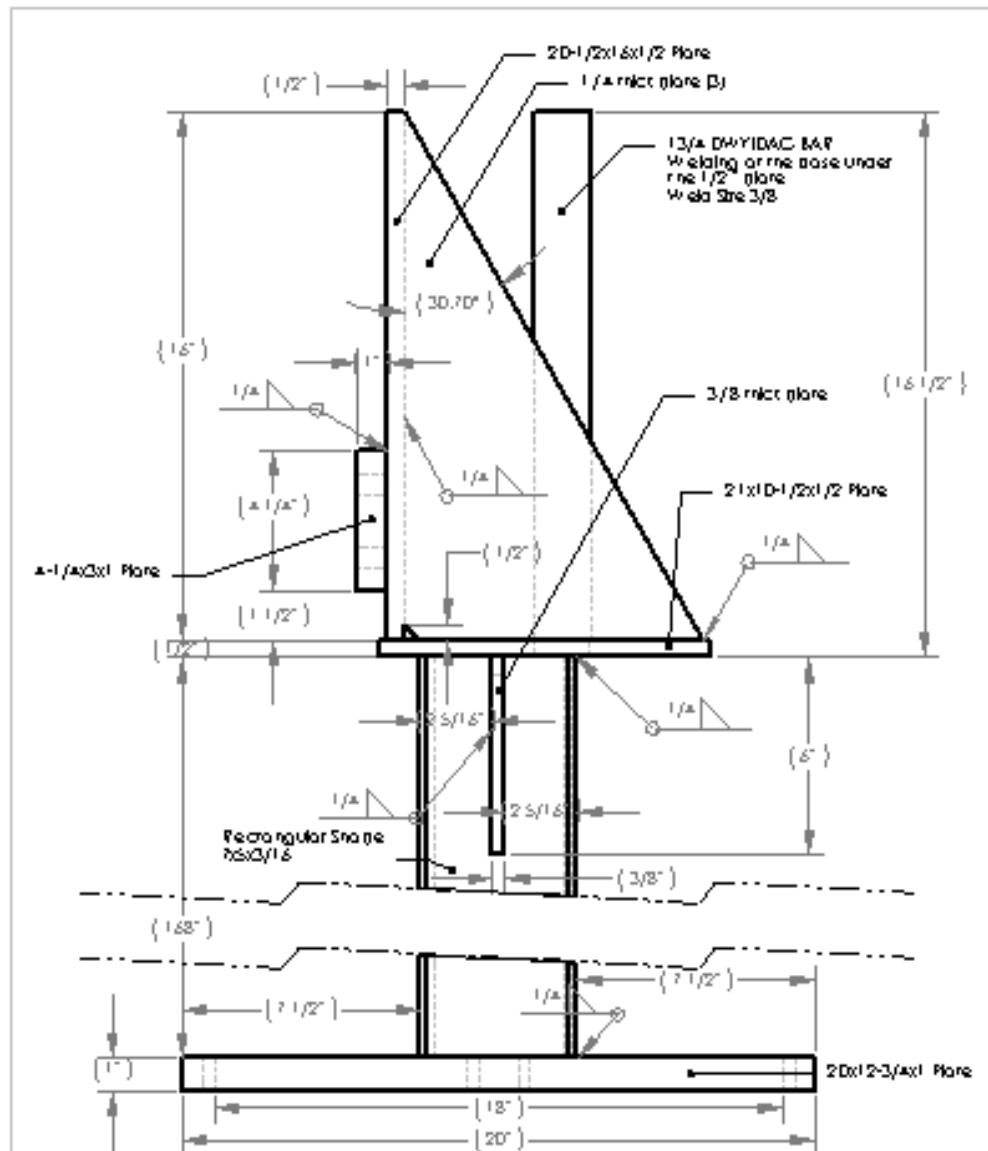
MADE BY _____ DATE _____ CHECKED BY _____ APPROVED BY _____



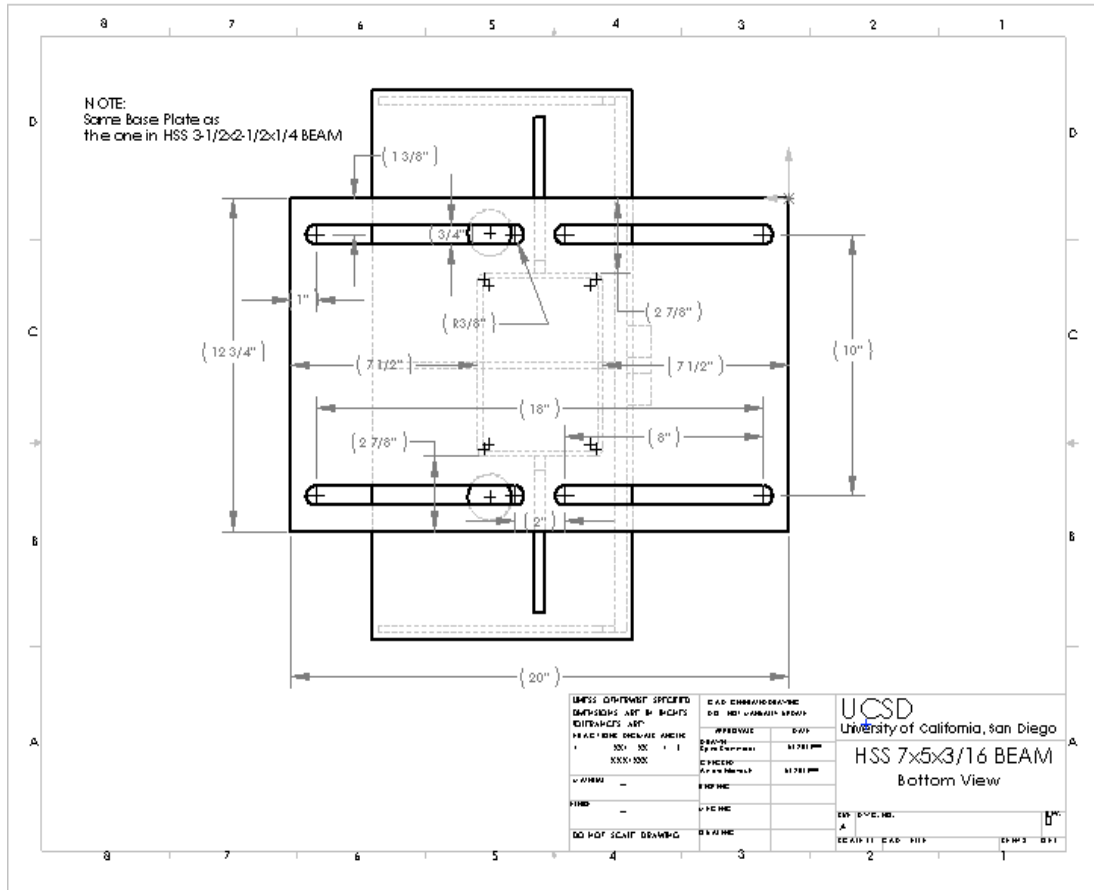
APPENDIX B

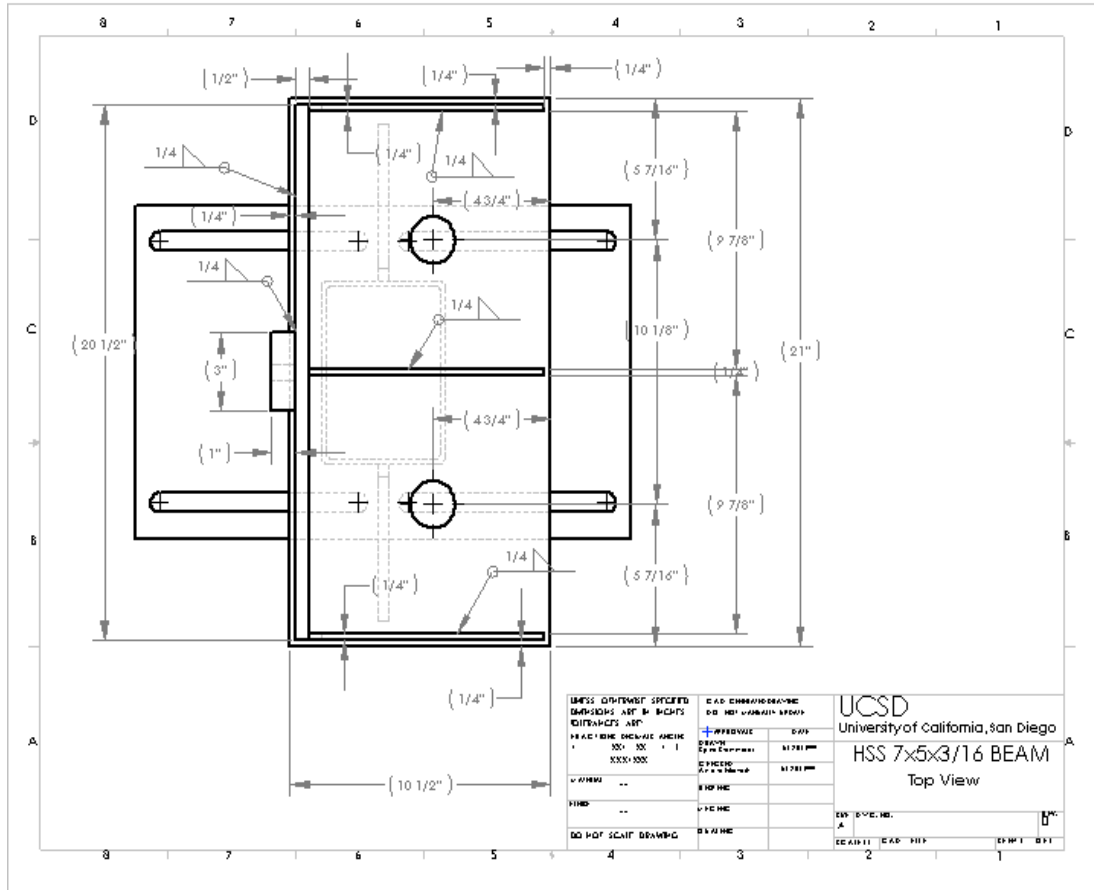
SHOP DRAWINGS OF GENERIC EQUIPMENT SPECIMENS

EQUIPMENT 1

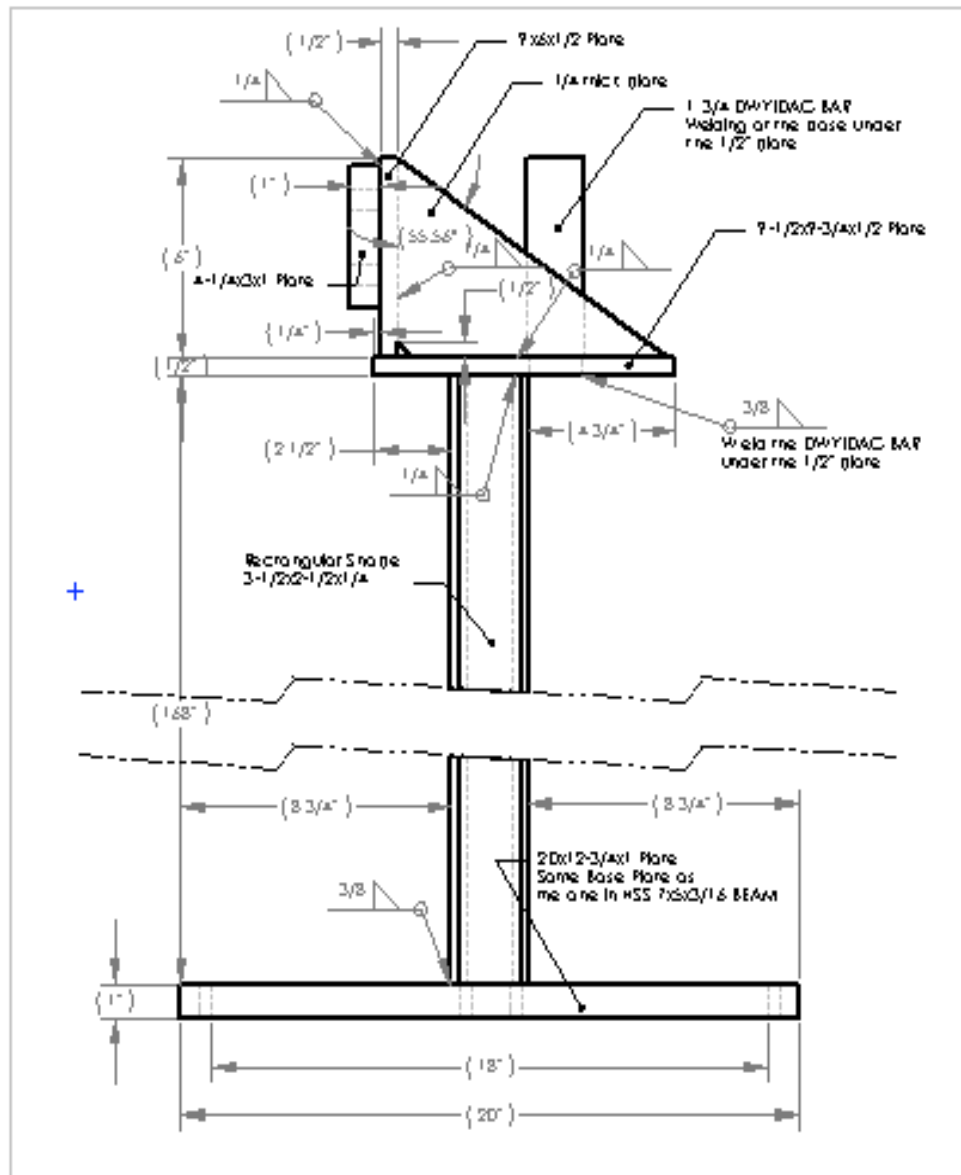


UNLESS OTHERWISE SPECIFIED DIMENSIONS ARE IN INCHES FRACTIONS ARE			COMMENTS		UCSD University of California, San Diego		
FINISHES 100 1 100 1 X	DIMENSIONS 100 1 100 1 100	ANGLES 1 X	APPROVALS	DATE	HSS 7x5x3/16 BEAM Side View		
MATERIAL	FINISH	COLOR	DESIGNER DATE	CHECKER DATE	DT	DWG NO	REV
DO NOT SCALE DRAWING	SCALE	DATE	SCALE	DATE	SCALE	DATE	SCALE

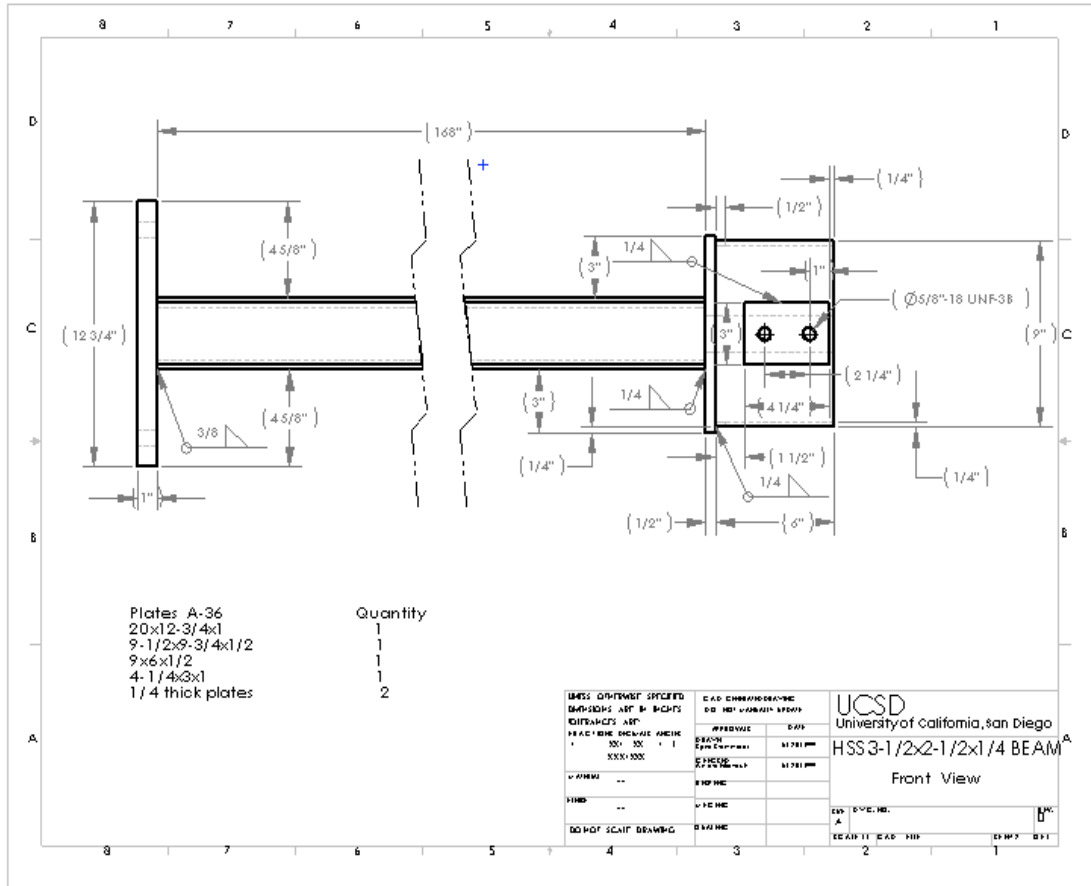


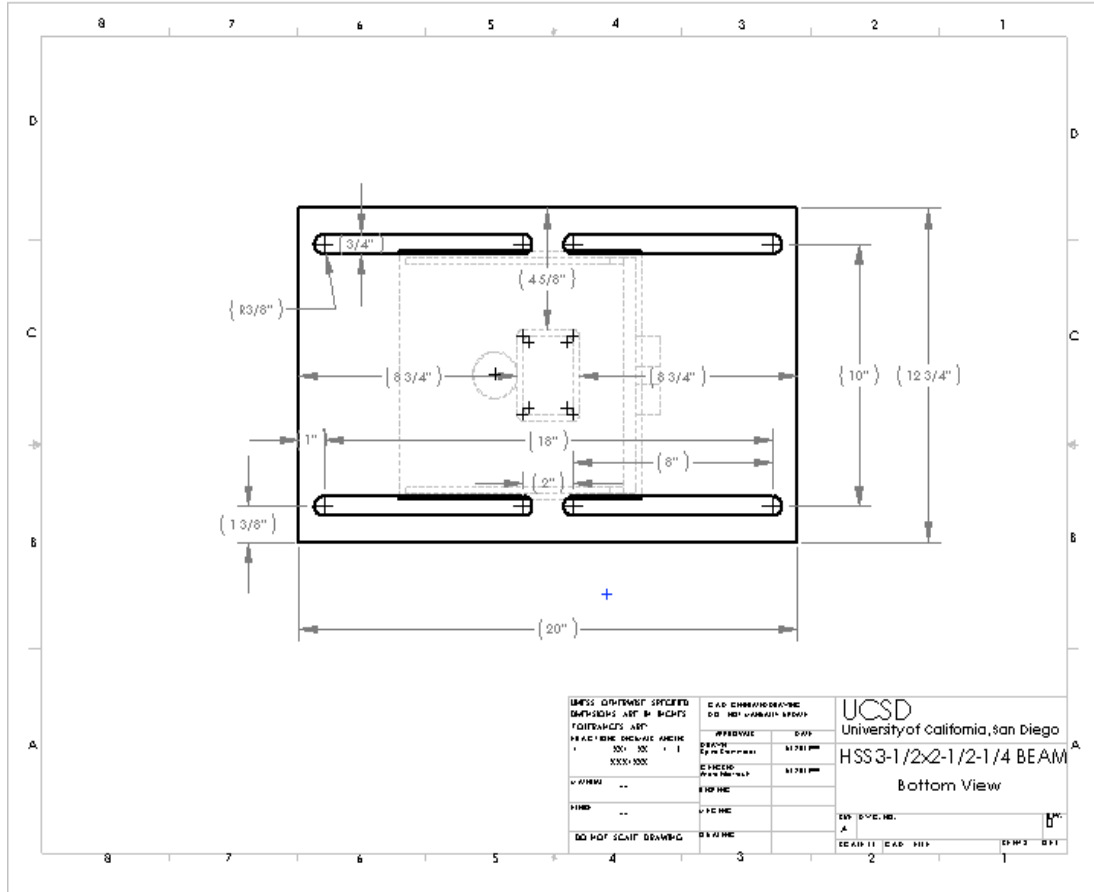


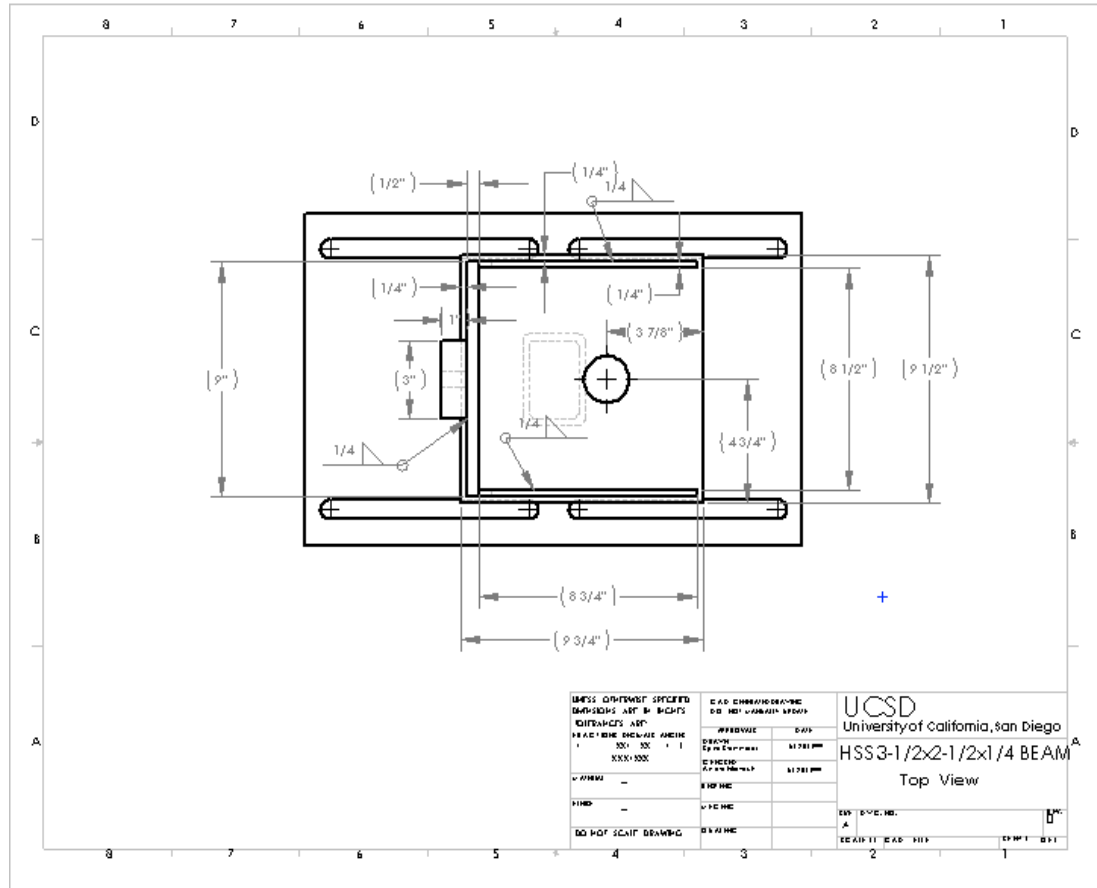
EQUIPMENT 2



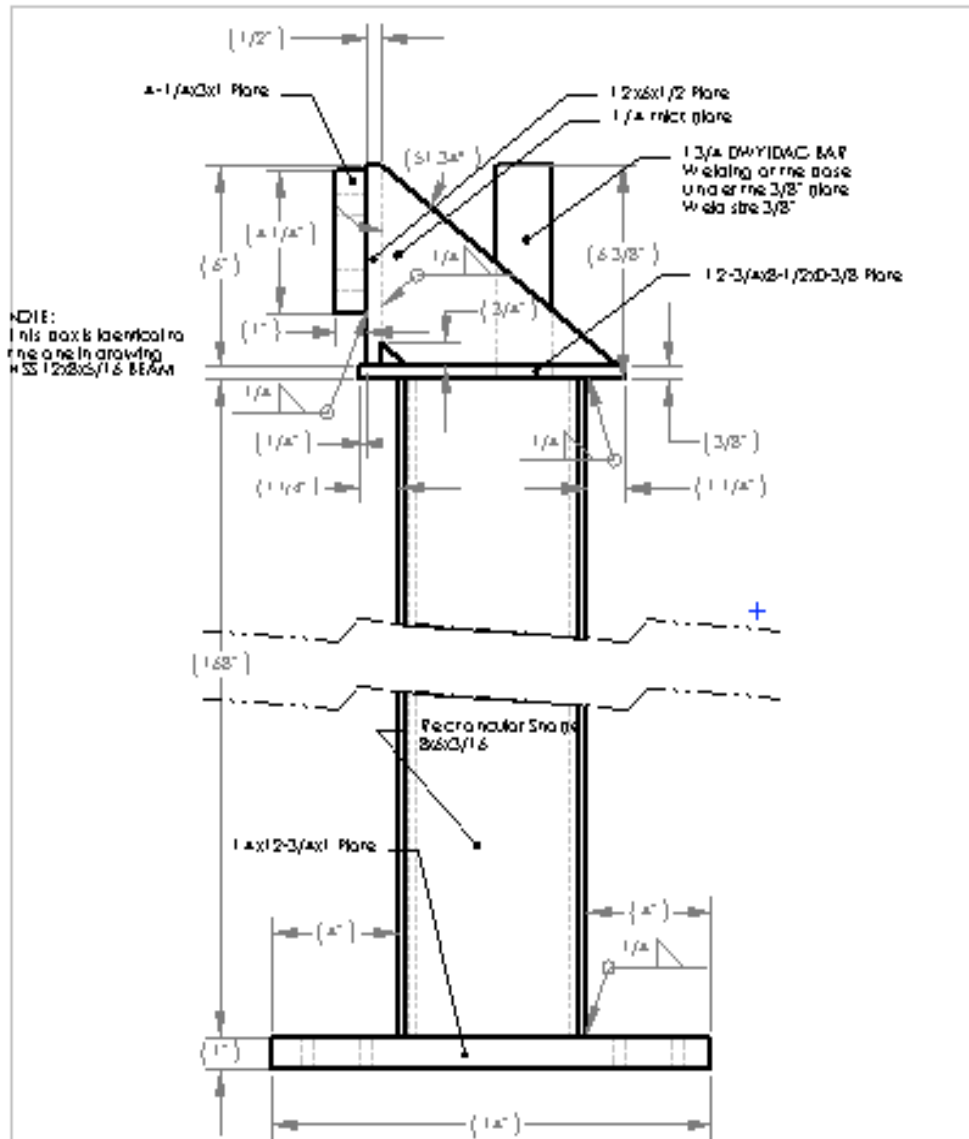
UNLESS OTHERWISE SPECIFIED DIMENSIONS ARE IN INCHES TO NEAREST 1/16"		CONTRACT NO.		UCSD University of California, San Diego	
TOLERANCES UNLESS OTHERWISE SPECIFIED		APPROVALS		DATE	
FINISH	100	DESIGN	100	3/20/1999	HSS 3-1/2x2-1/2x1/4 BEAM Side View
CONCRETE	1/8"	CONCRETE	1/8"	3/20/1999	
STEEL	1/16"	STEEL	1/16"		
WOOD	1/32"	WOOD	1/32"		
GLASS	1/64"	GLASS	1/64"		
ASPHALT	1/8"	ASPHALT	1/8"		
PAINT	1/16"	PAINT	1/16"		
DO NOT SCALE DRAWING					







EQUIPMENT 3



UNLESS OTHERWISE SPECIFIED
DIMENSIONS ARE IN INCHES
DECIMALS ARE

FRACIONS	DECIMALS	ANGLES
1/32	001, 002, 005, 010, 020, 050, 100, 200, 500, 1000	1/4°

WARRANTY
NOTES
DO NOT SCALE DRAWING

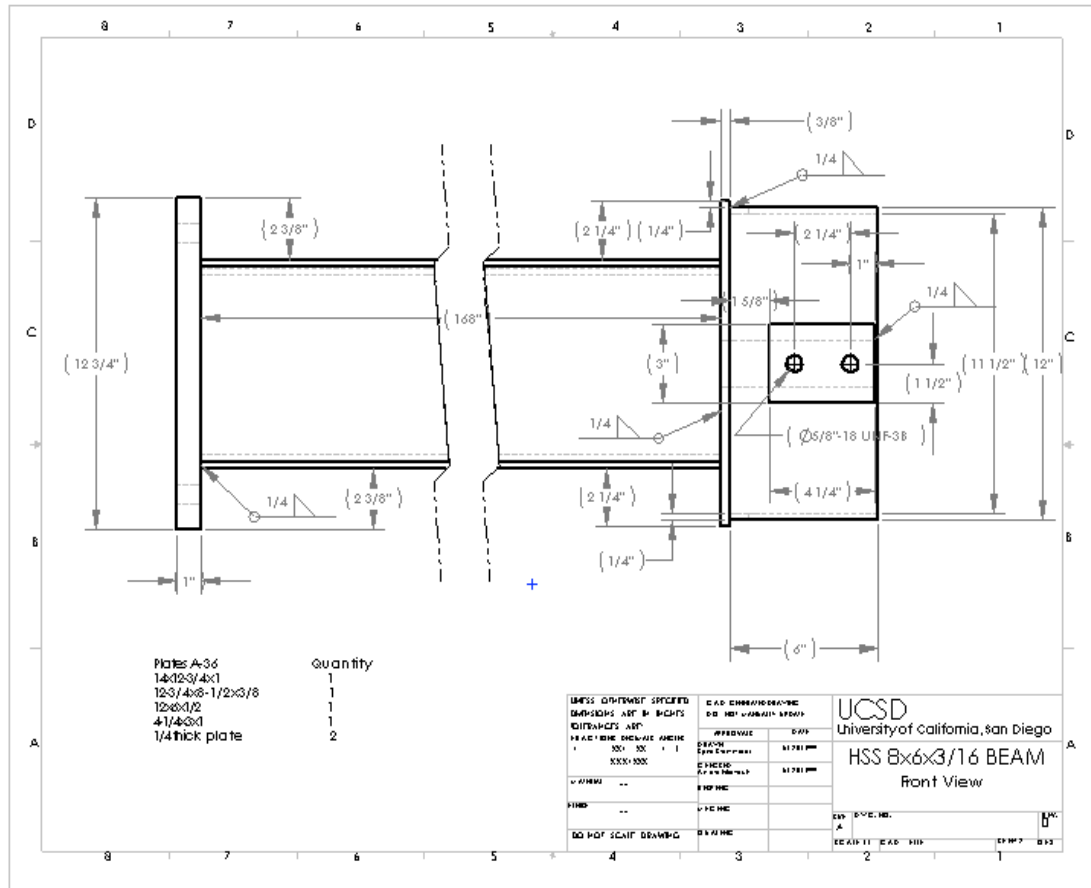
CONTRACT NO.	
APPROVALS	DATE
D. B. B. / S. E. / C. P. / J. M.	5/20/1999
	5/20/1999
FIGURE	
ISSUE	

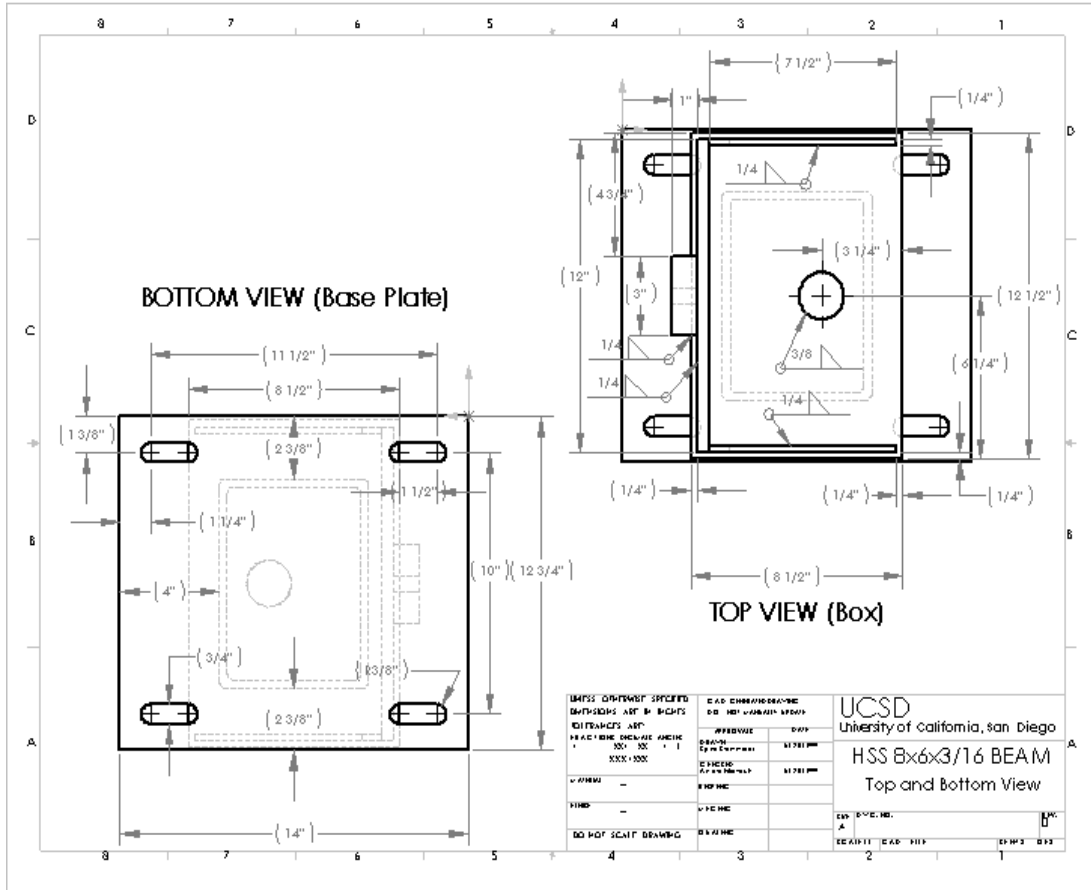
UCSD
University of California, San Diego

HSS 8x6x3/16 BEAM
Side View

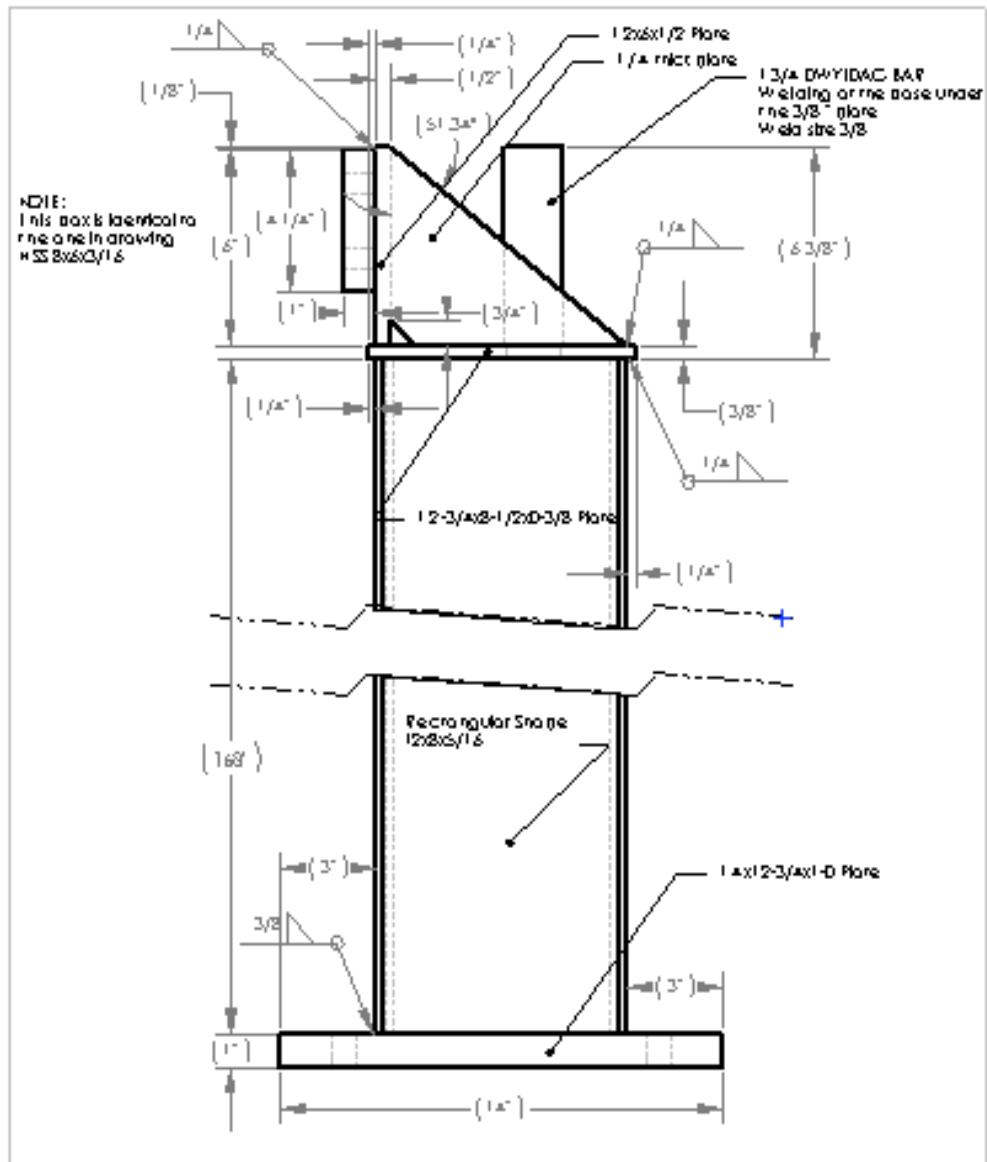
REV	DATE	BY
1		RV

SCALE: 1/4" = 1'-0"
C.A.B. REP. SHEET 1 OF 2

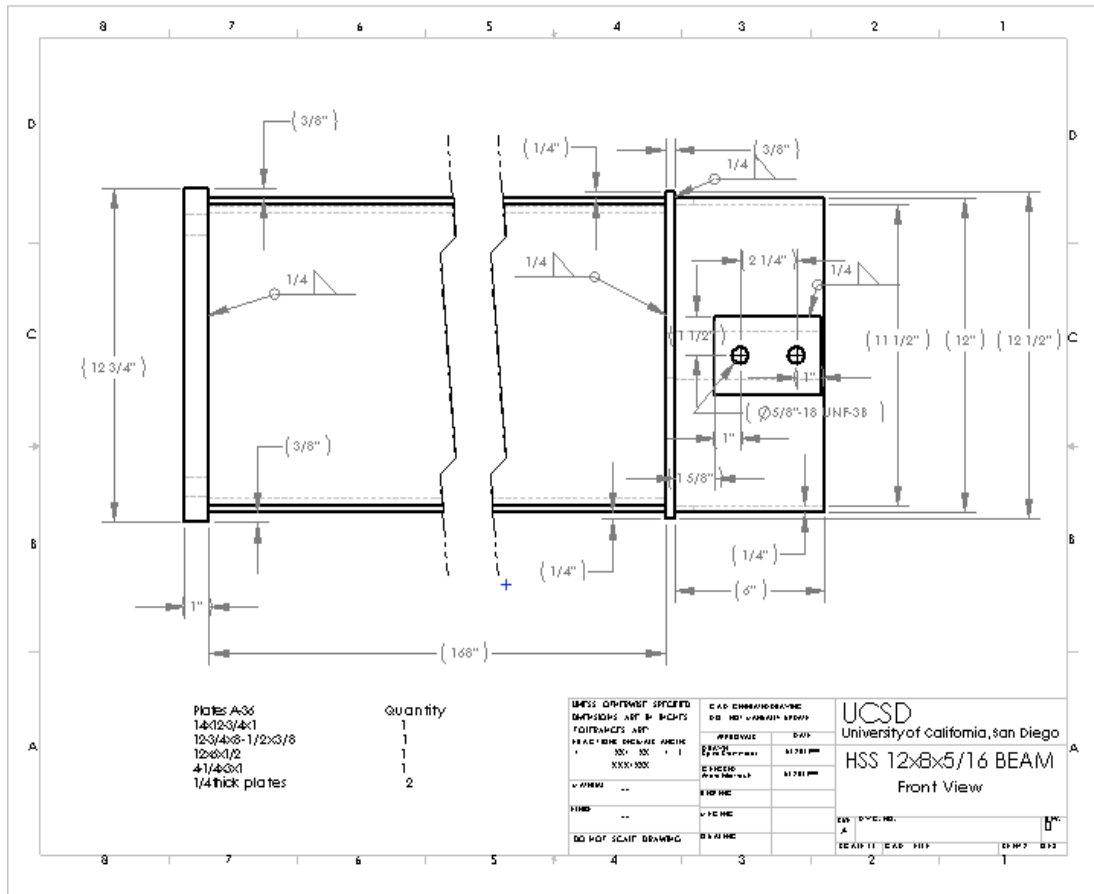


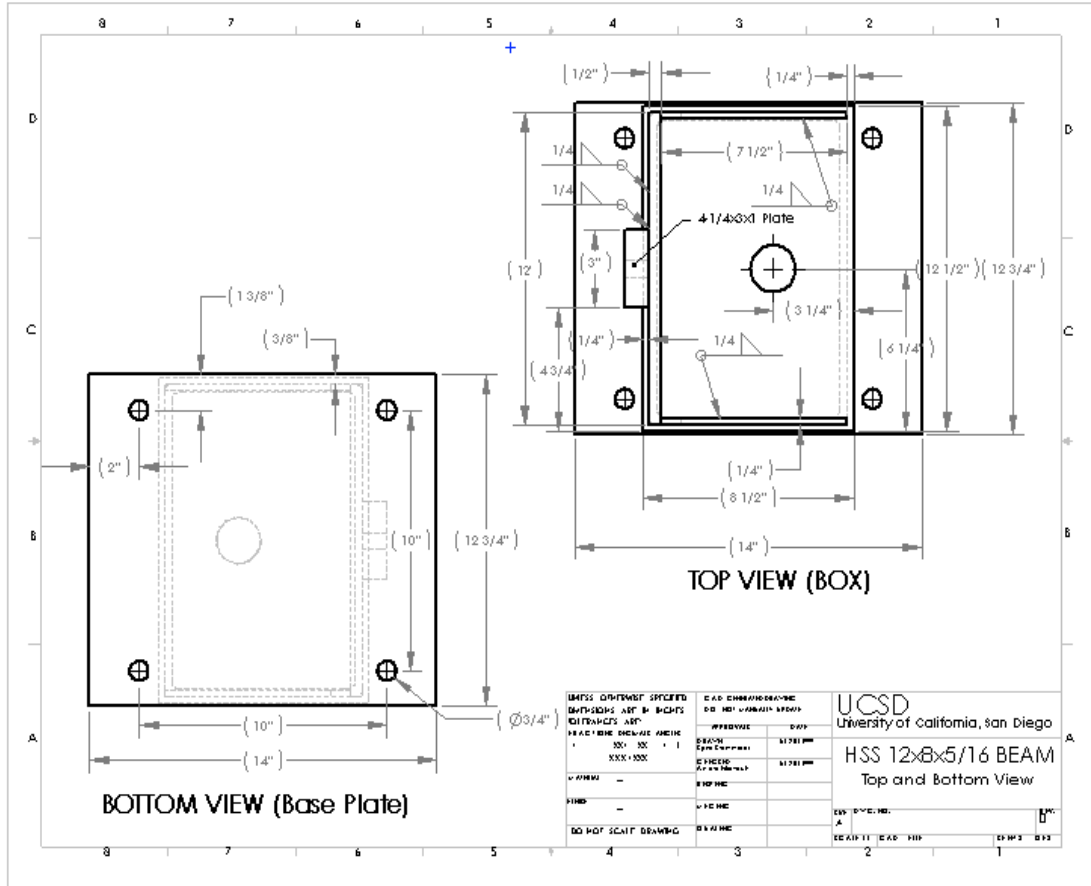


EQUIPMENT 4



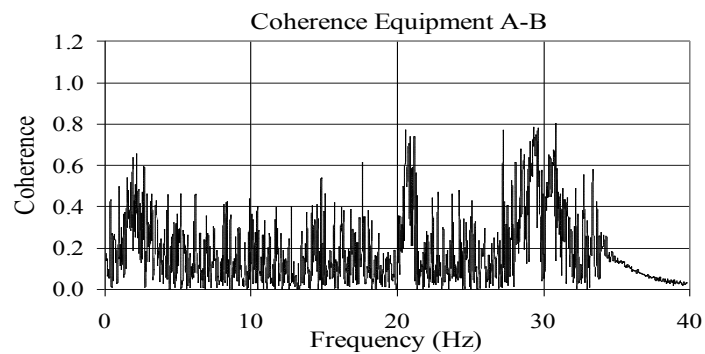
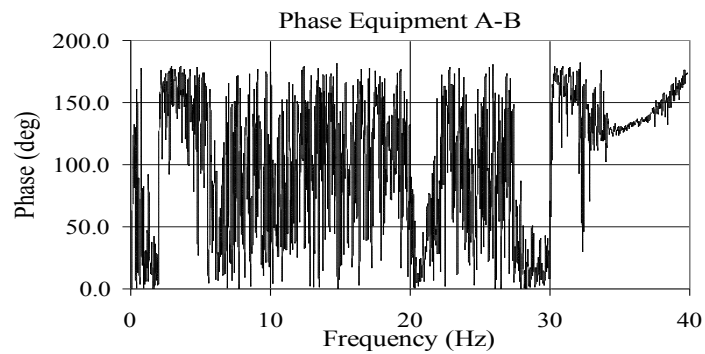
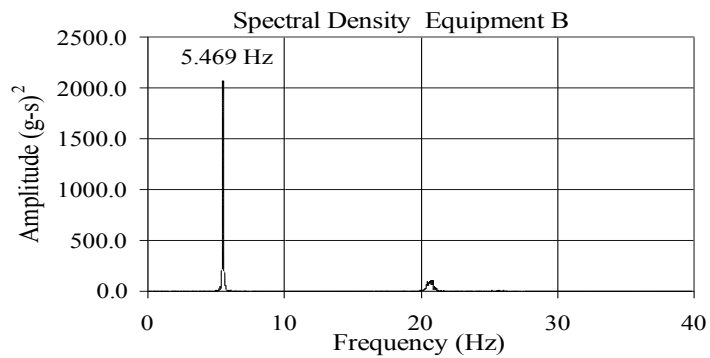
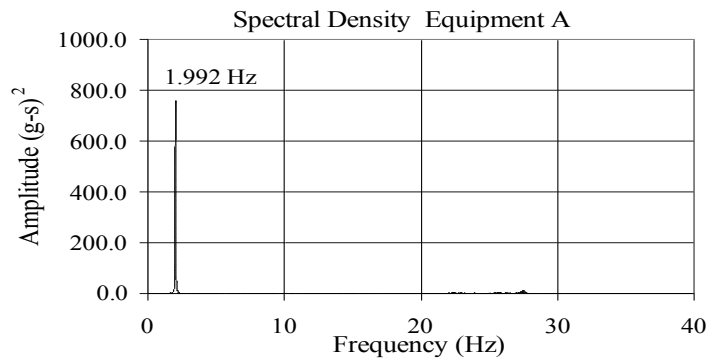
UNLESS OTHERWISE SPECIFIED DIMENSIONS ARE IN INCHES DECIMALS ARE			CONTRACT NO.		UCSD University of California, San Diego	
DECIMALS: 1/16, 1/32, 1/64, 1/8, 1/4, 3/8, 1/2, 5/8, 3/4, 7/8, 1			APPROVALS		DATE	
MATERIAL			CHECKED		DATE	
DESIGNED BY			DRAWN BY		SCALE	
DO NOT SCALE DRAWING			SHEET NO.		OF	



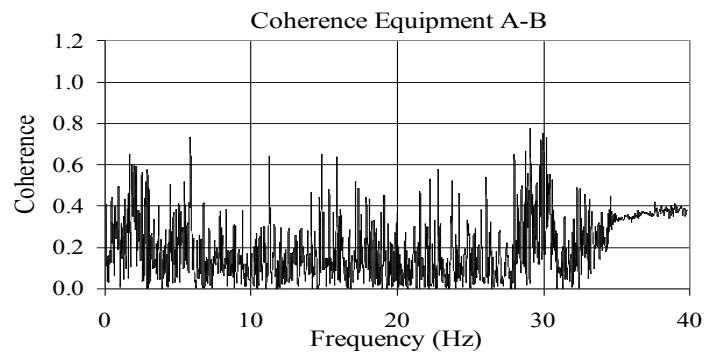
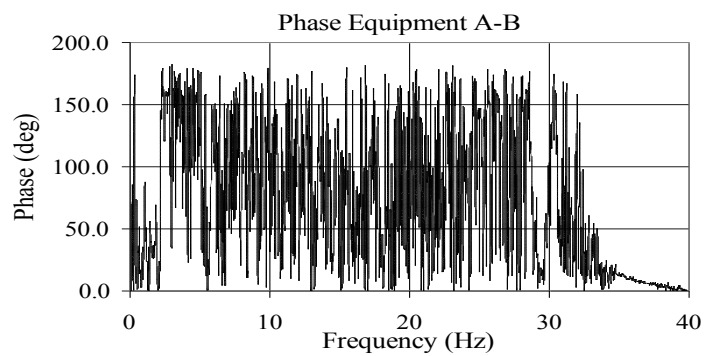
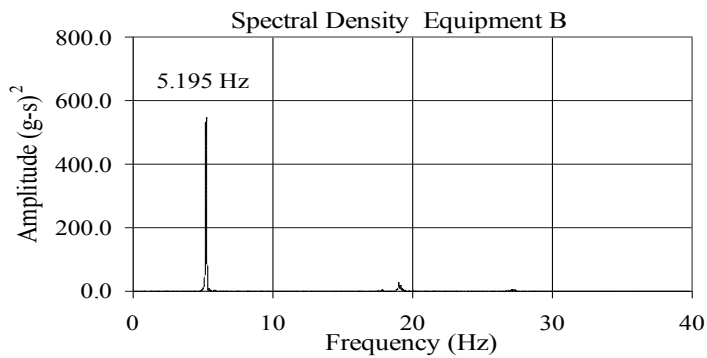
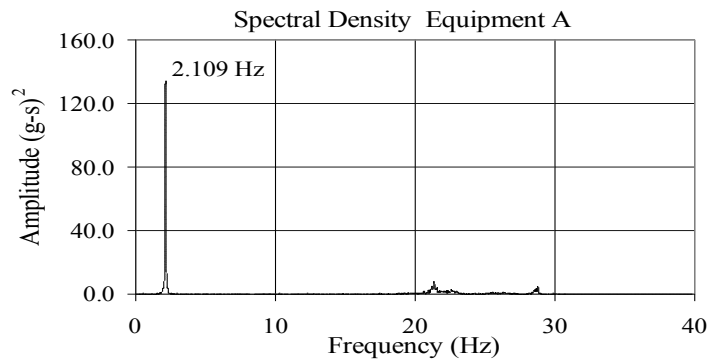


APPENDIX C
RESULTS OF FREQUENCY EVALUATION TESTS

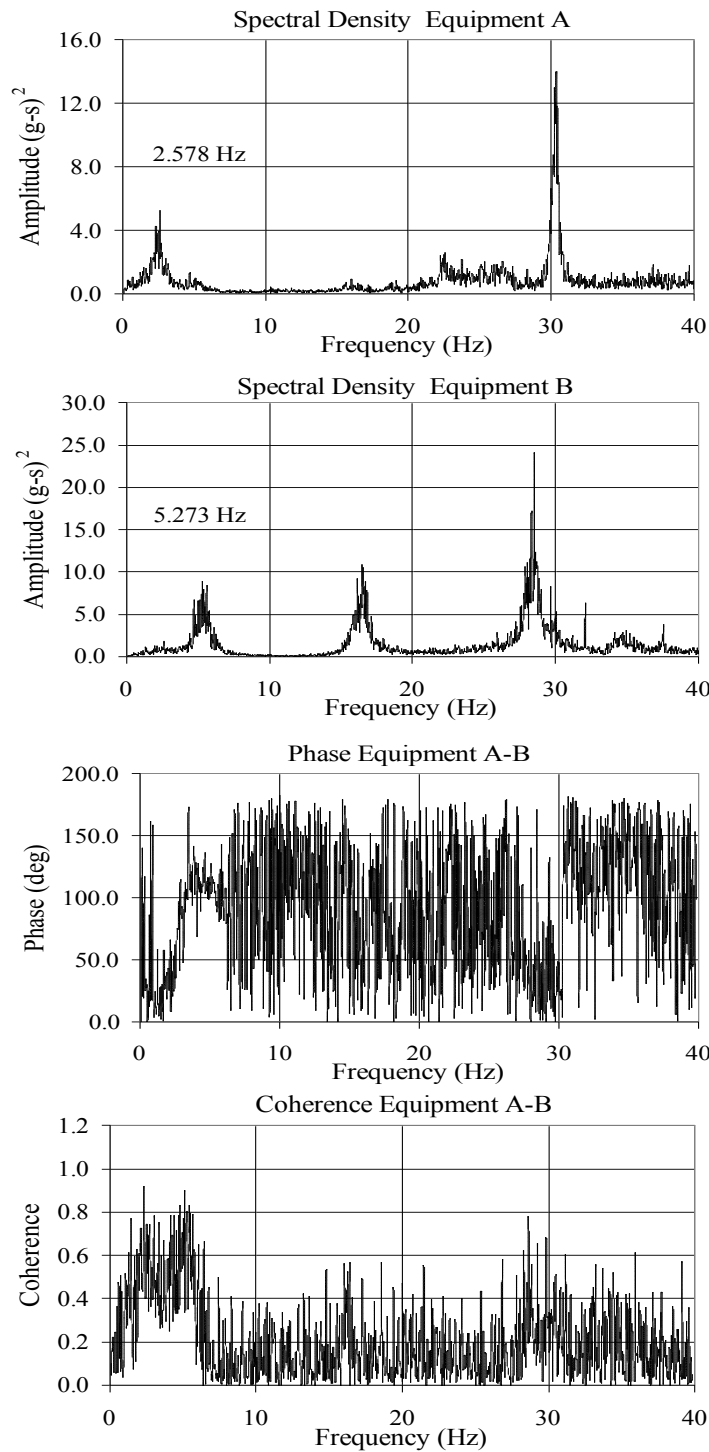
**TEST RC-1
EQUIPMENT COMBINATION 2
UNCOUPLED**



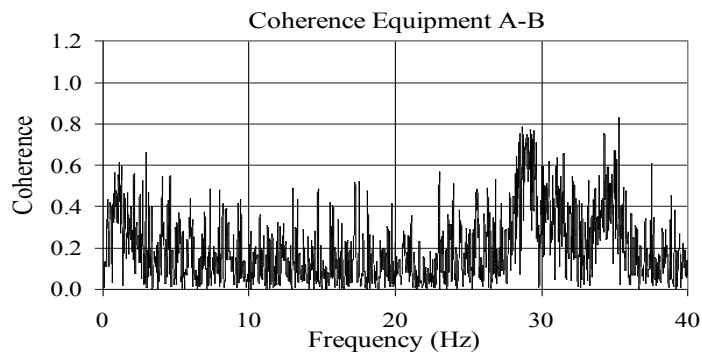
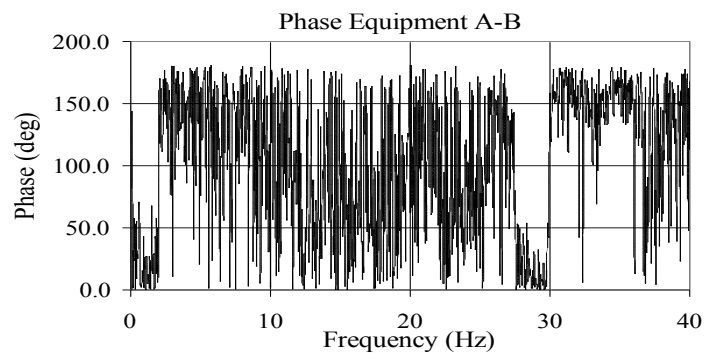
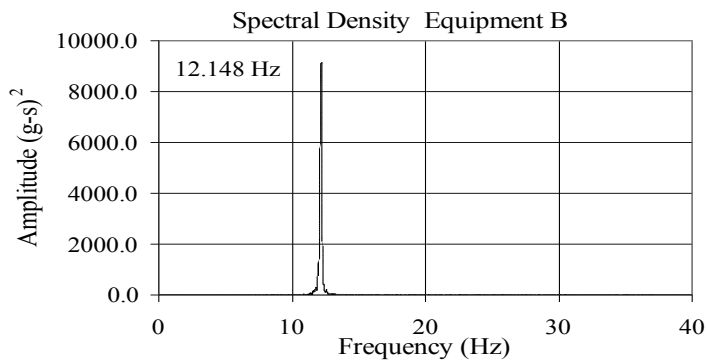
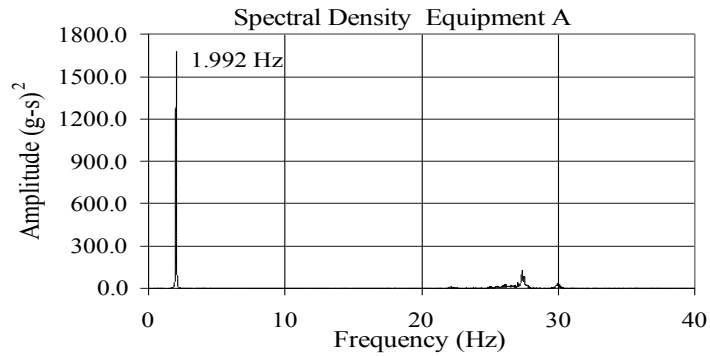
TEST RC-8
EQUIPMENT COMBINATION 2
FLEXIBLE STRAP CONNECTOR



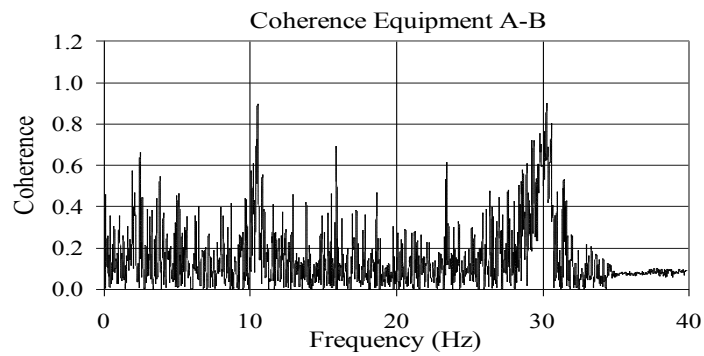
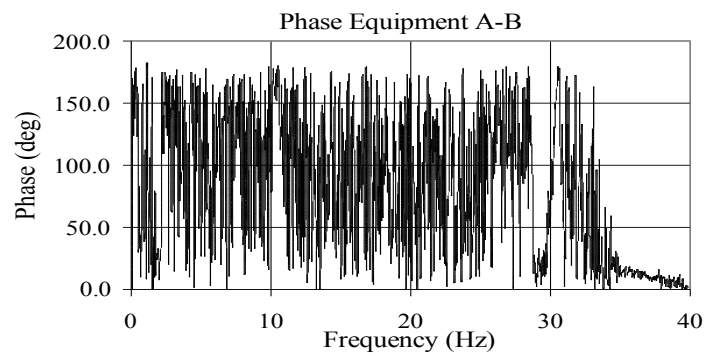
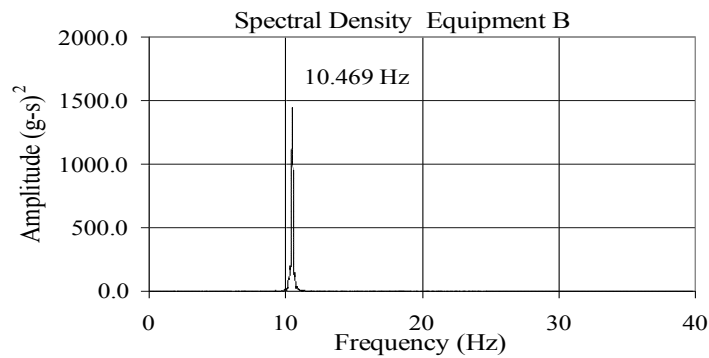
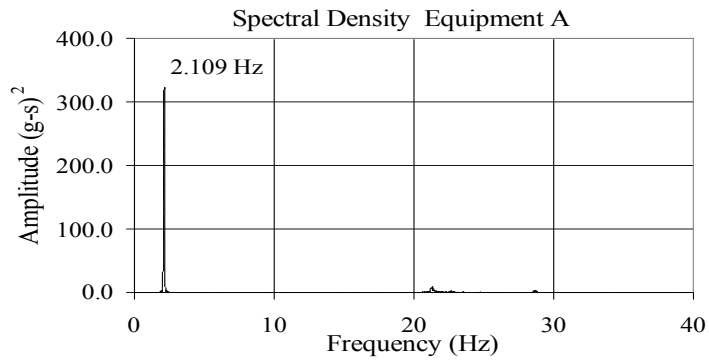
TEST RC-15
EQUIPMENT COMBINATION 2
BUS SLIDER CONNECTOR



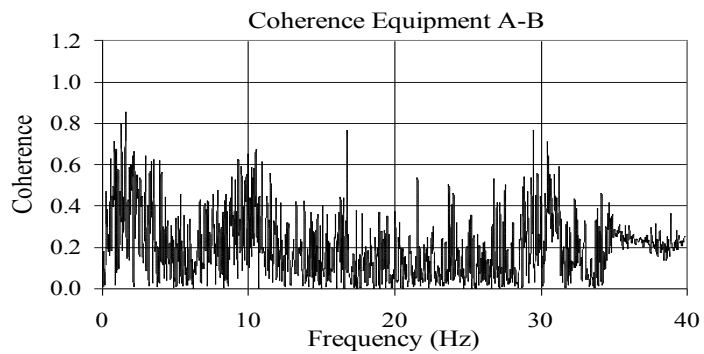
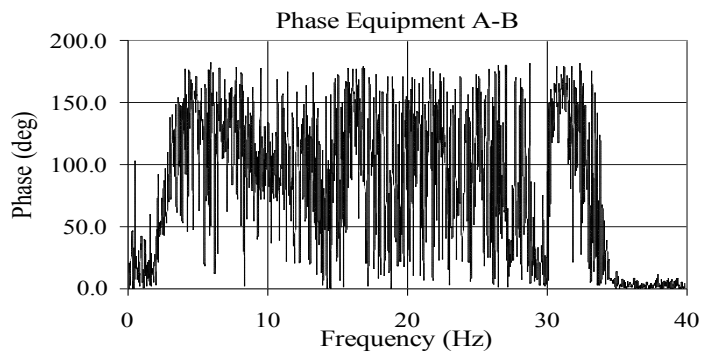
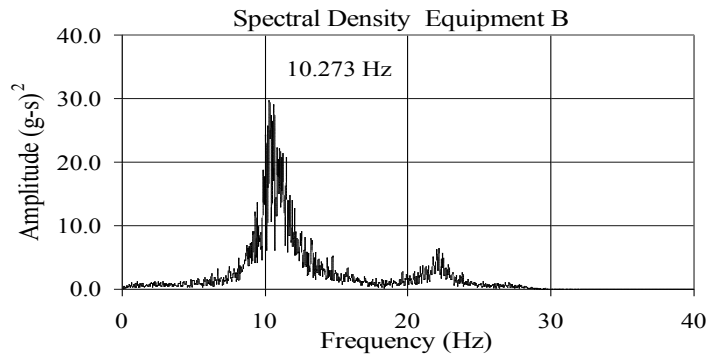
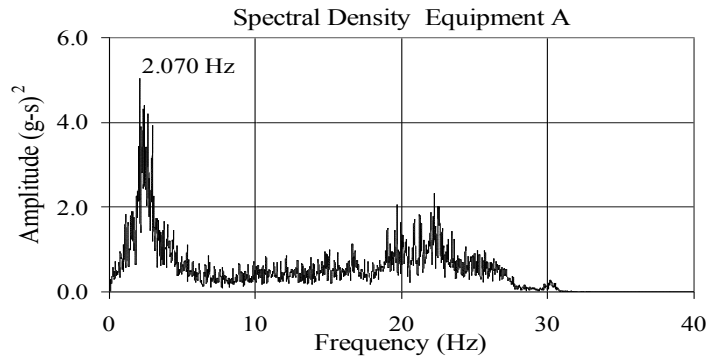
TEST RC-22
EQUIPMENT COMBINATION 5
UNCOUPLED



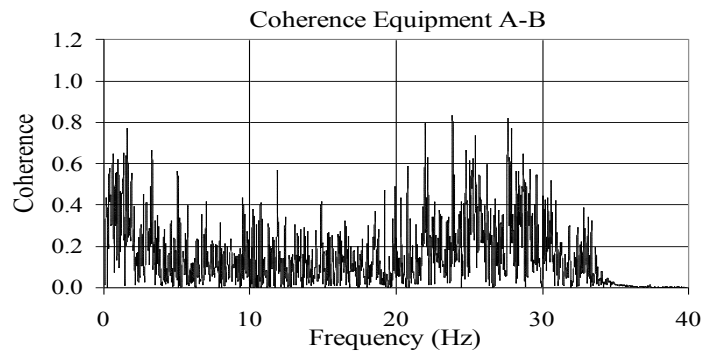
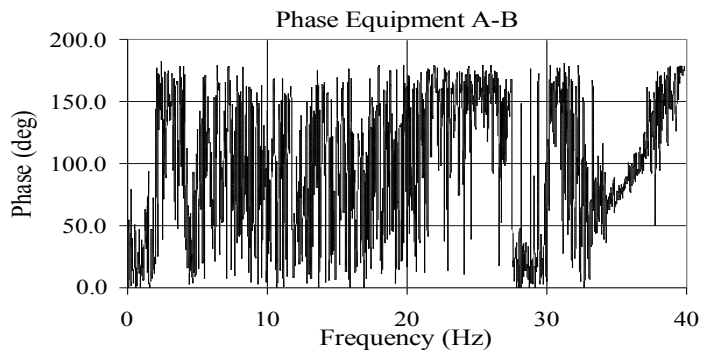
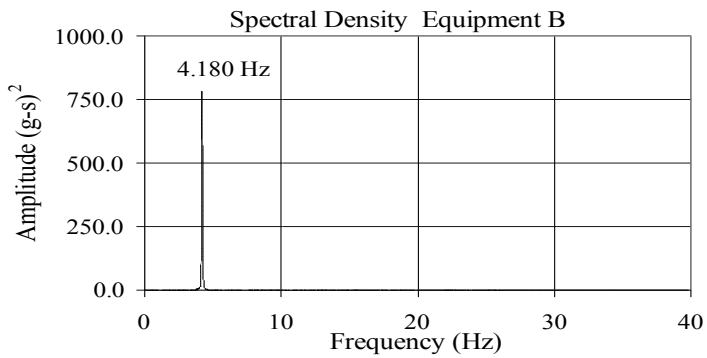
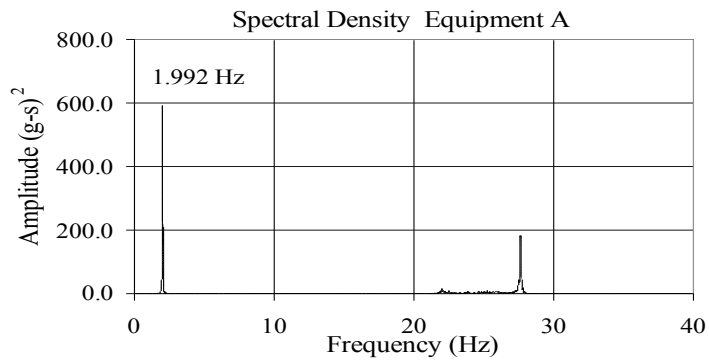
TEST RC-28
EQUIPMENT COMBINATION 5
FLEXIBLE STRAP CONNECTOR



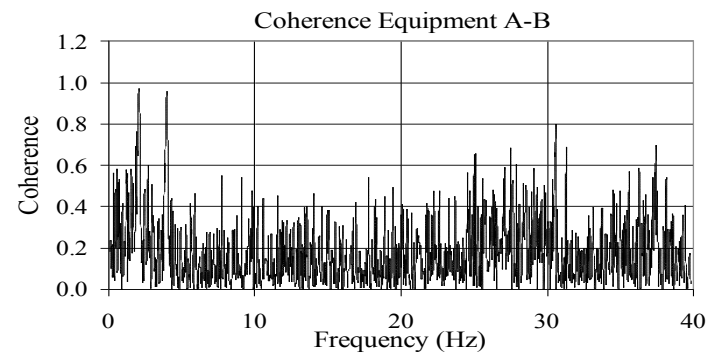
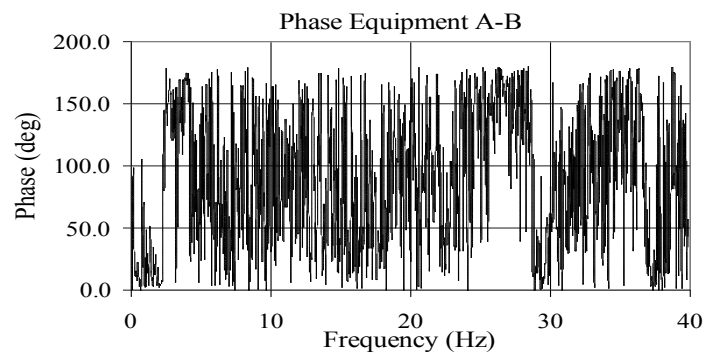
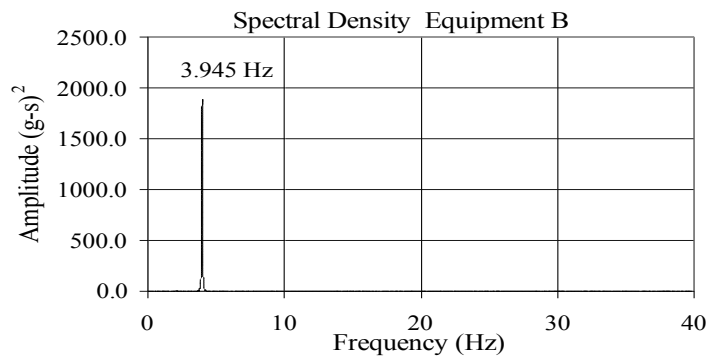
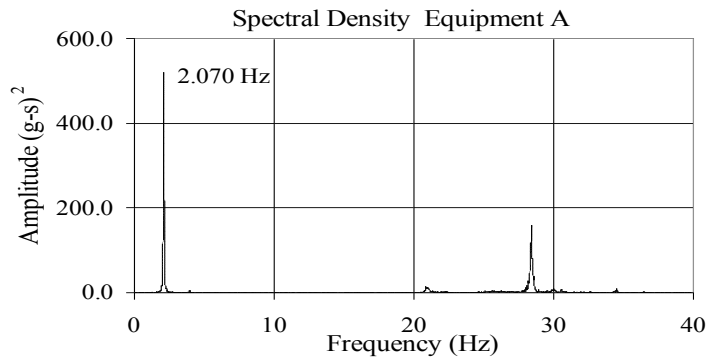
TEST RC-35
EQUIPMENT COMBINATION 5
BUS SLIDER CONNECTOR



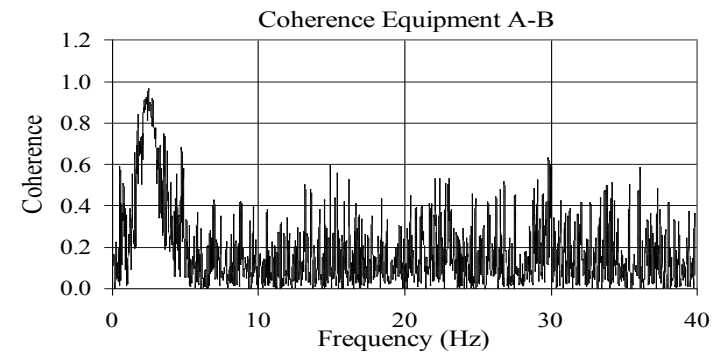
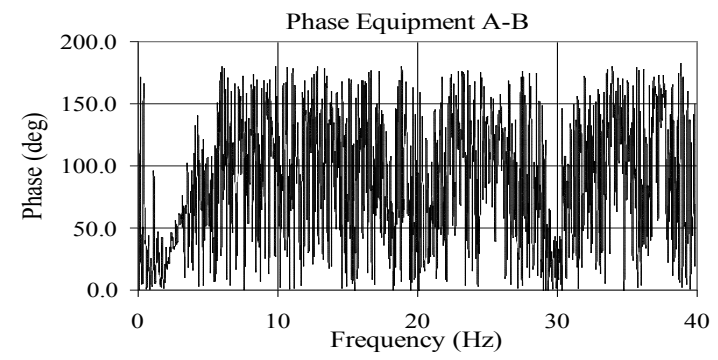
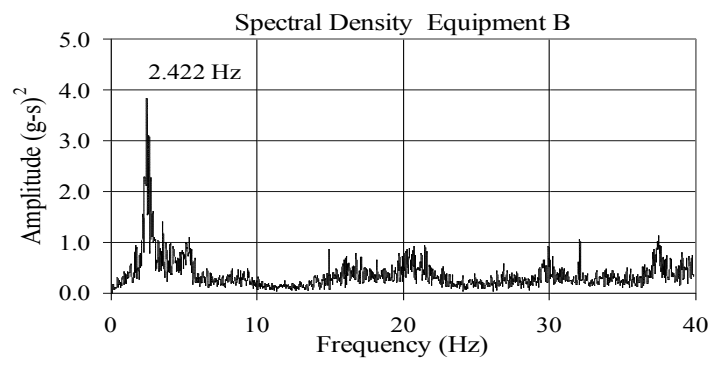
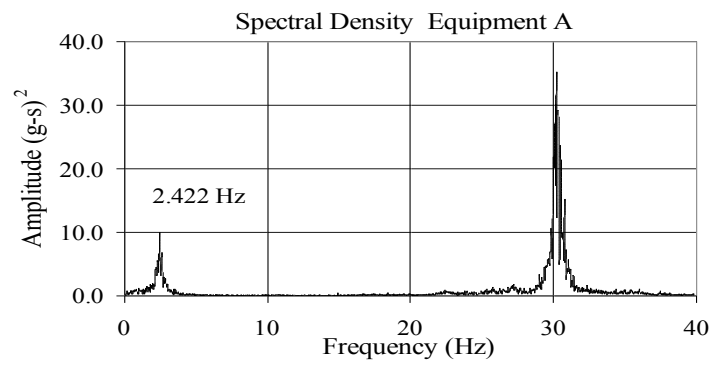
**TEST RC-42
EQUIPMENT COMBINATION 1
UNCOUPLED**



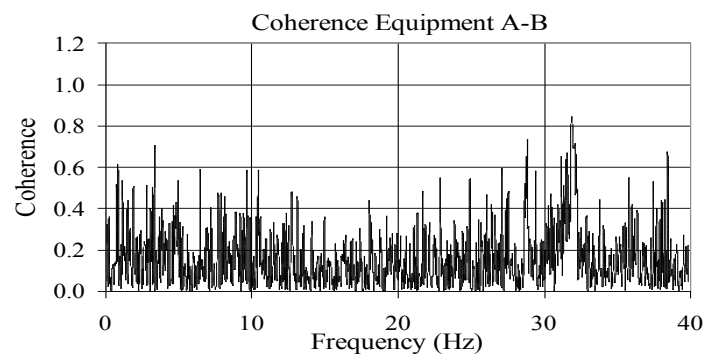
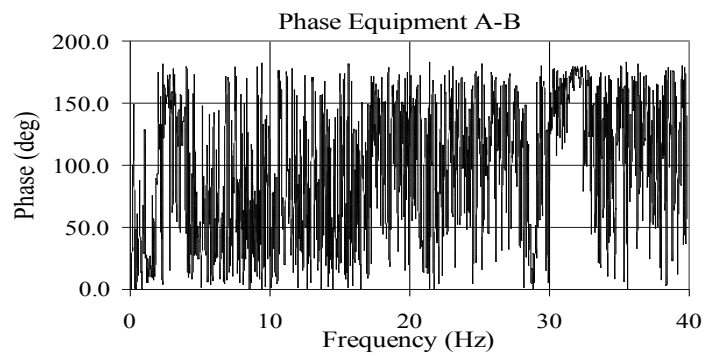
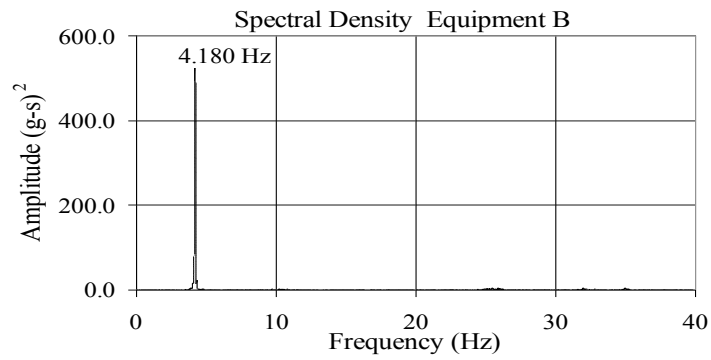
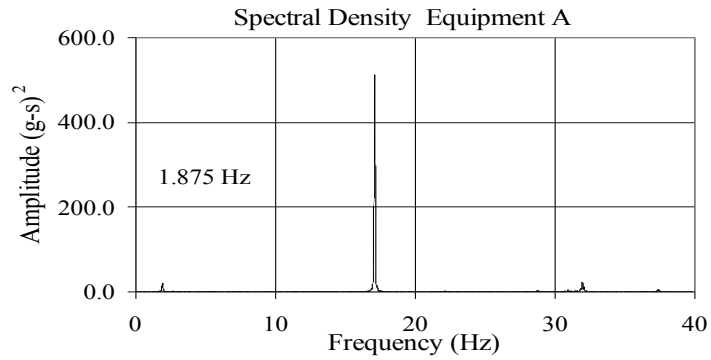
TEST RC-48
EQUIPMENT COMBINATION 1
FLEXIBLE STRAP CONNECTOR



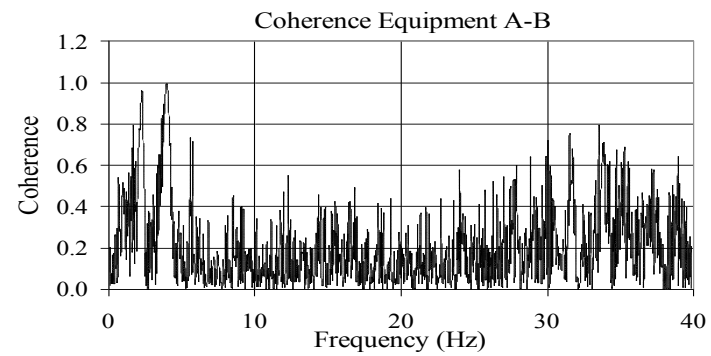
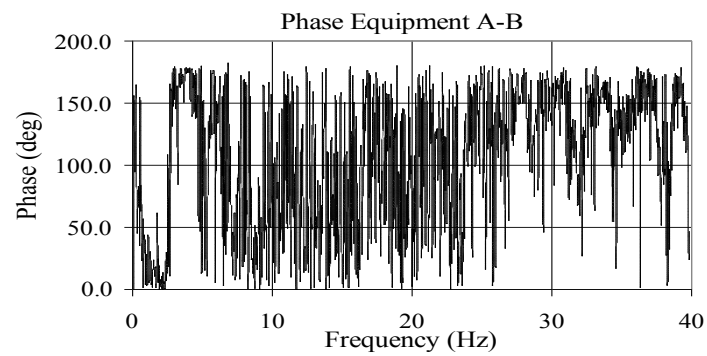
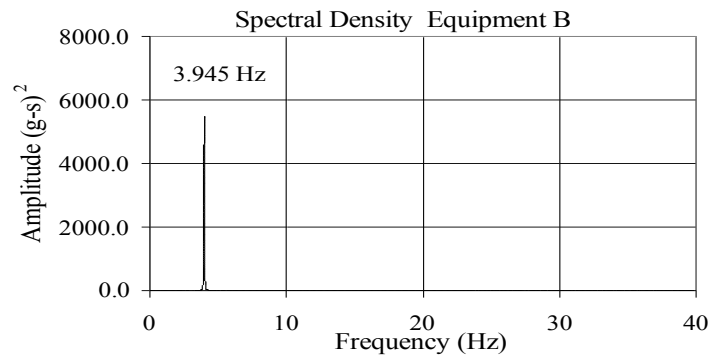
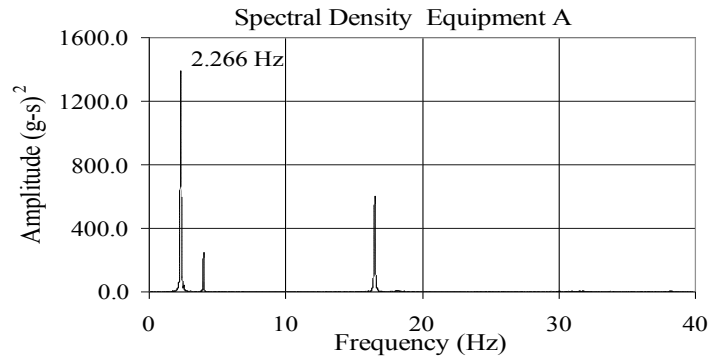
TEST RC-55 EQUIPMENT COMBINATION 1 BUS SLIDER CONNECTOR



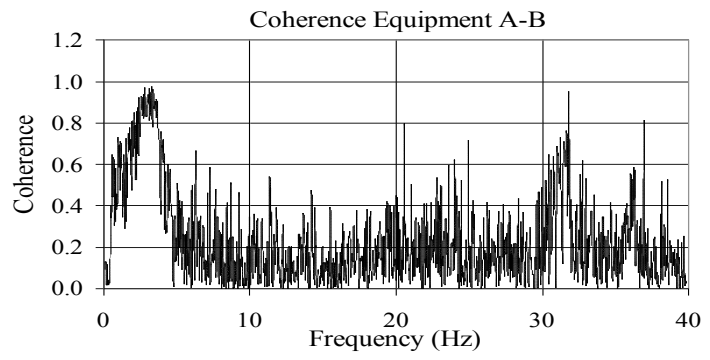
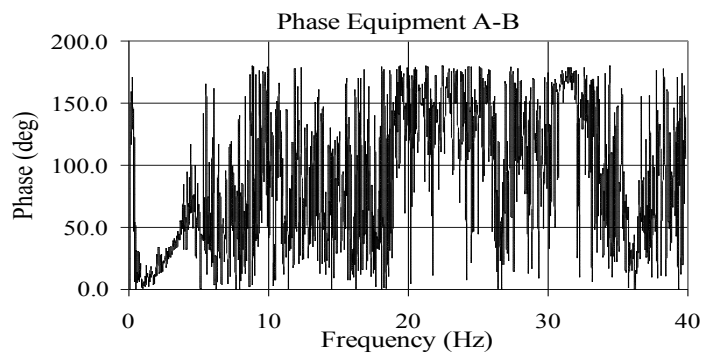
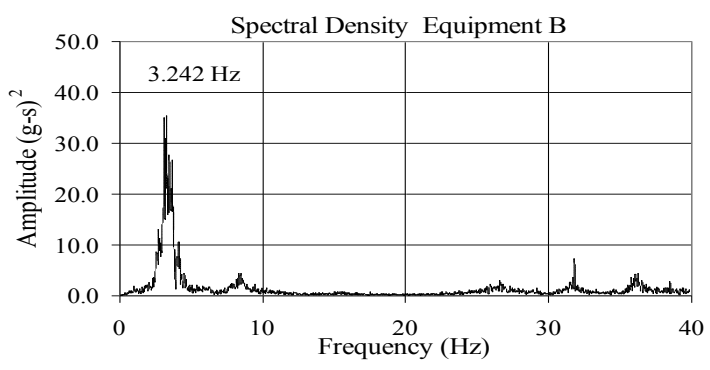
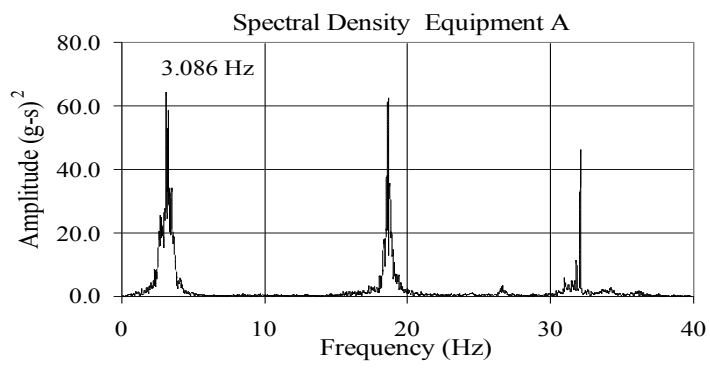
TEST RC-62
EQUIPMENT COMBINATION 3
UNCOUPLED



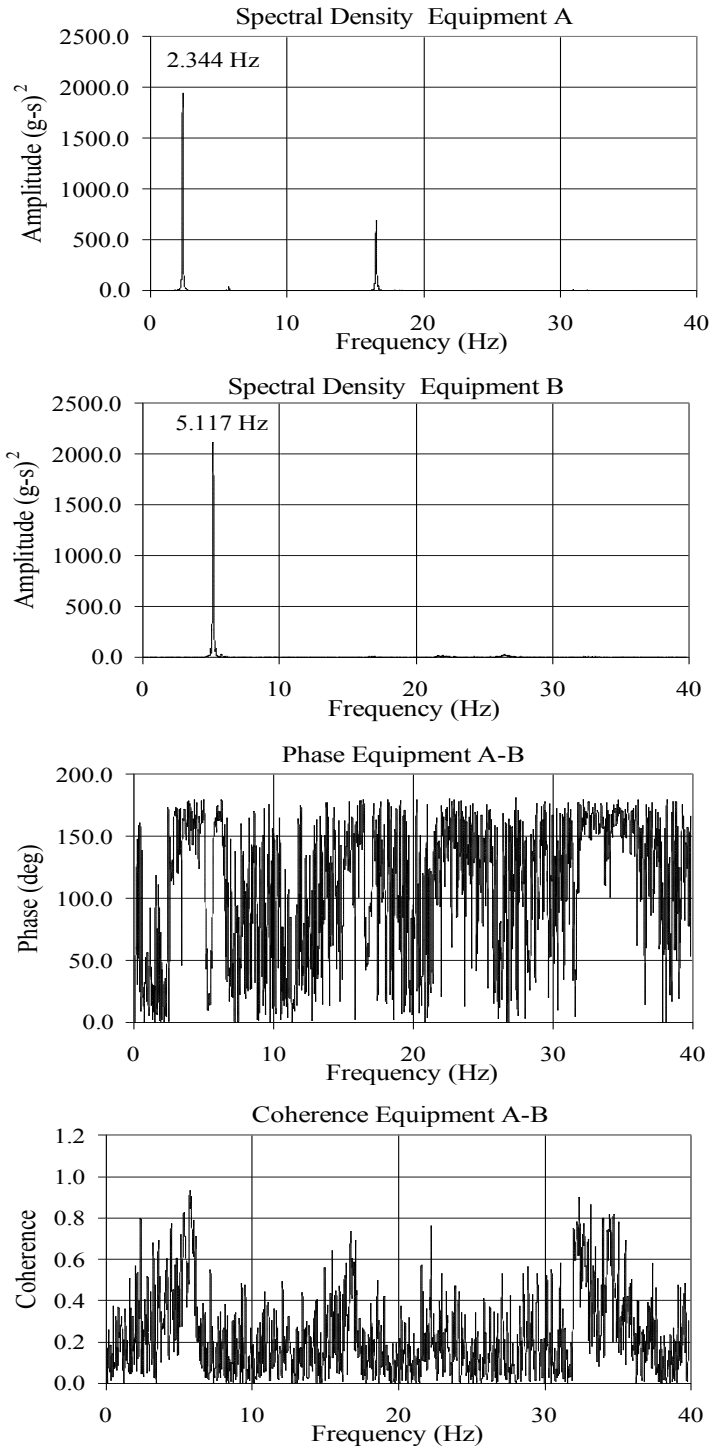
TEST RC-68
EQUIPMENT COMBINATION 3
FLEXIBLE STRAP CONNECTOR



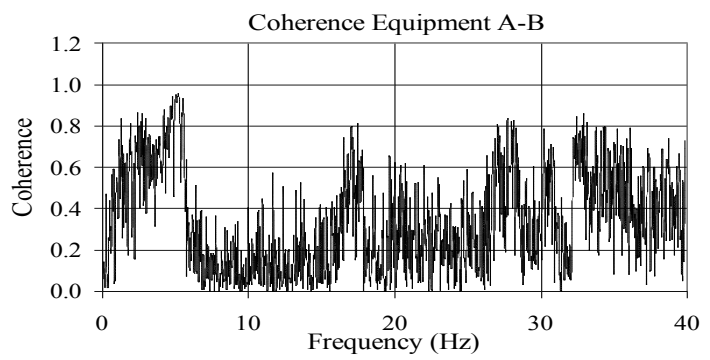
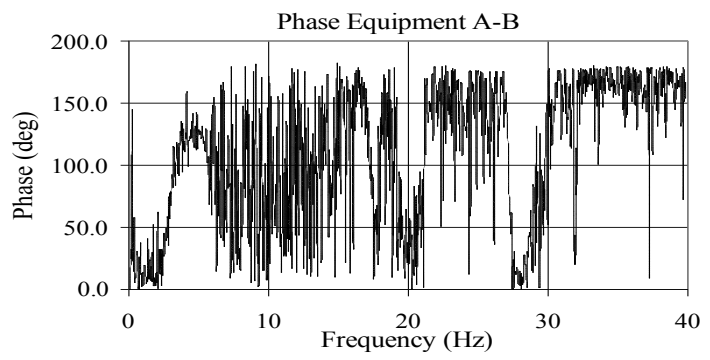
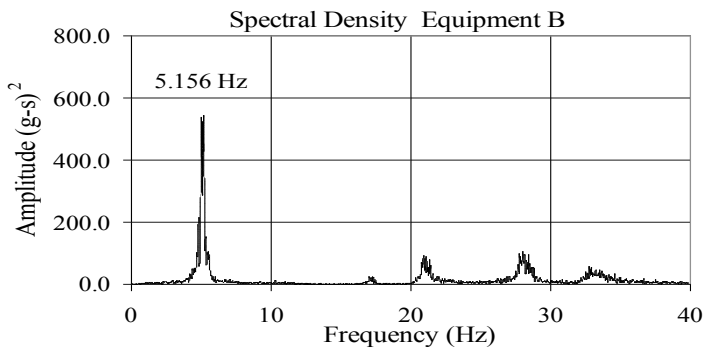
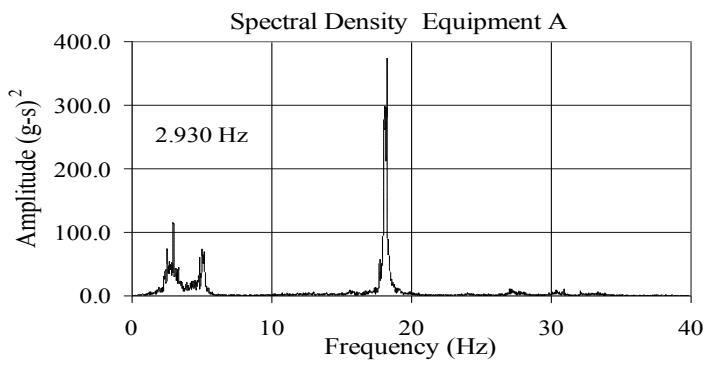
TEST RC-75 EQUIPMENT COMBINATION 3 BUS SLIDER CONNECTOR



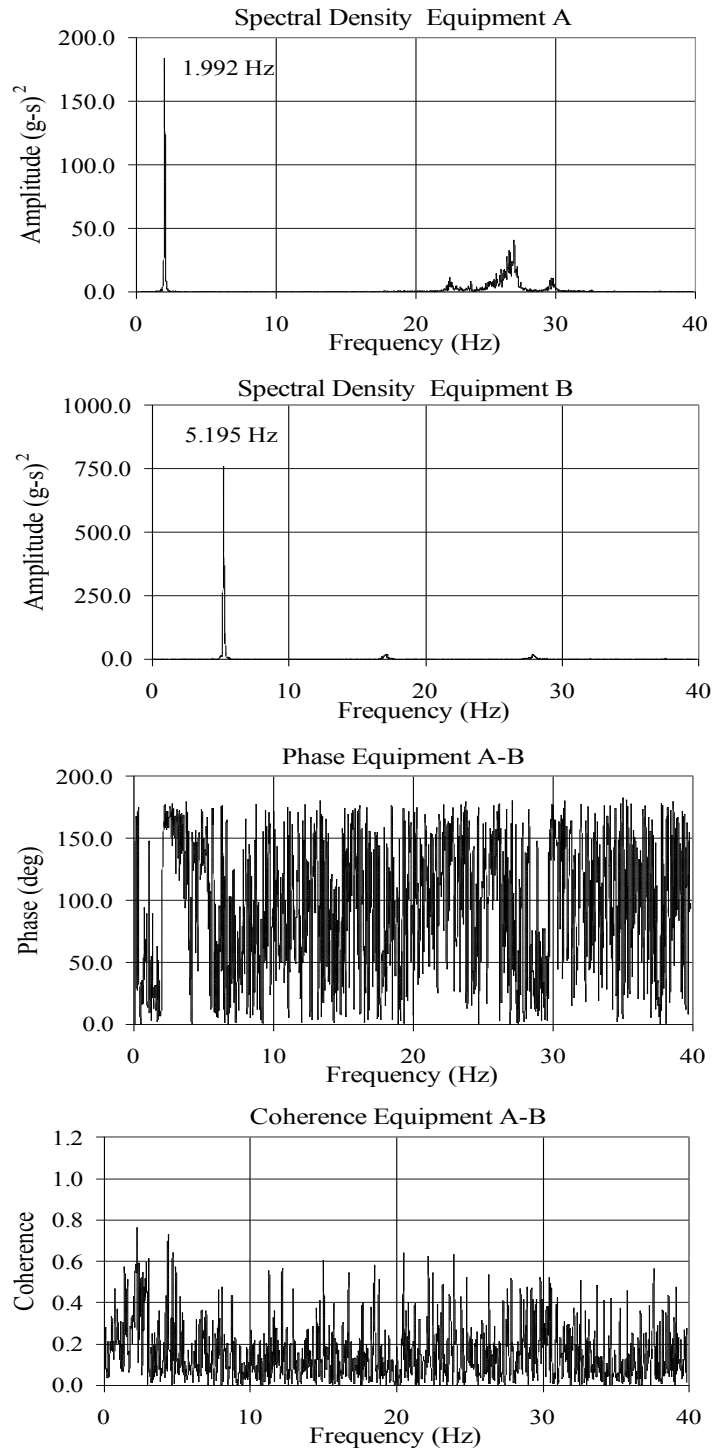
TEST RC-82
EQUIPMENT COMBINATION 4
FLEXIBLE STRAP CONNECTOR



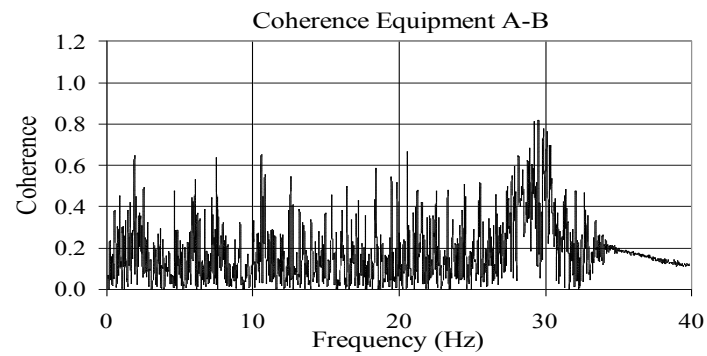
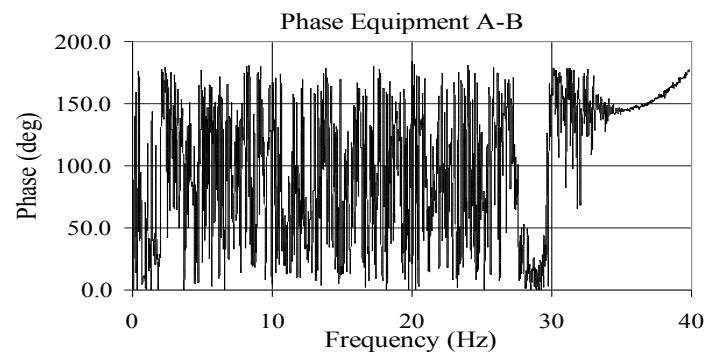
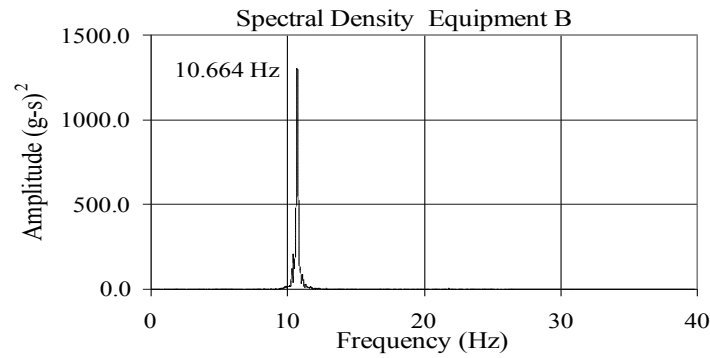
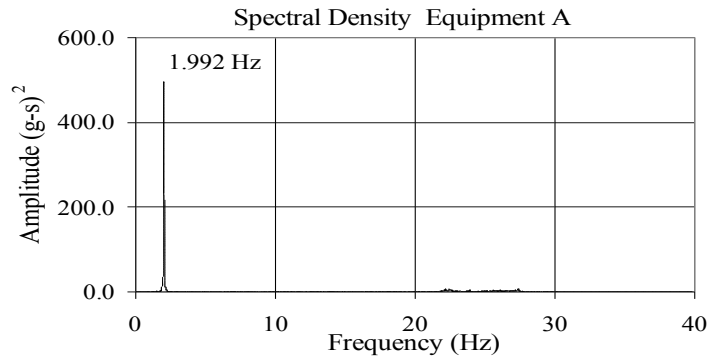
TEST RC-89 EQUIPMENT COMBINATION 4 BUS SLIDER CONNECTOR



TEST RC-96
EQUIPMENT COMBINATION 2
SEFCOR CONNECTOR



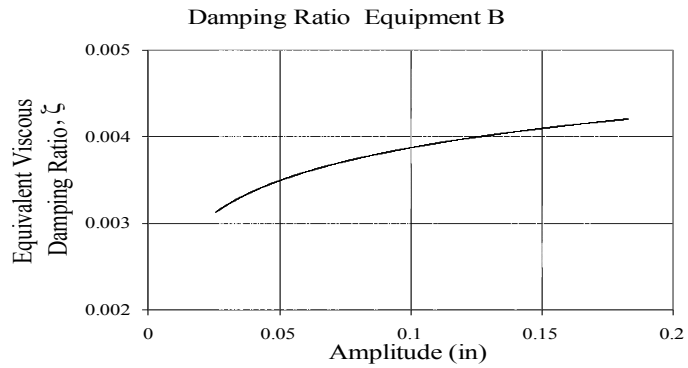
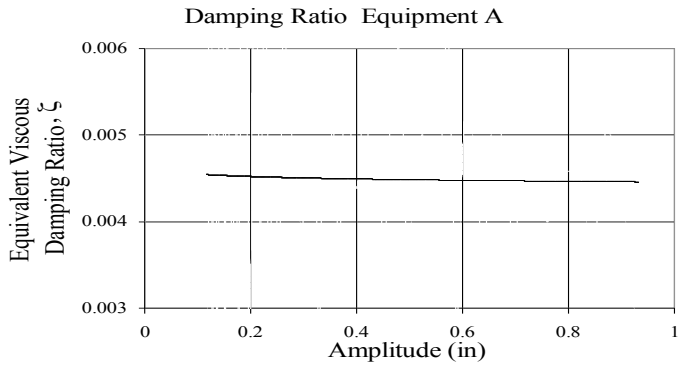
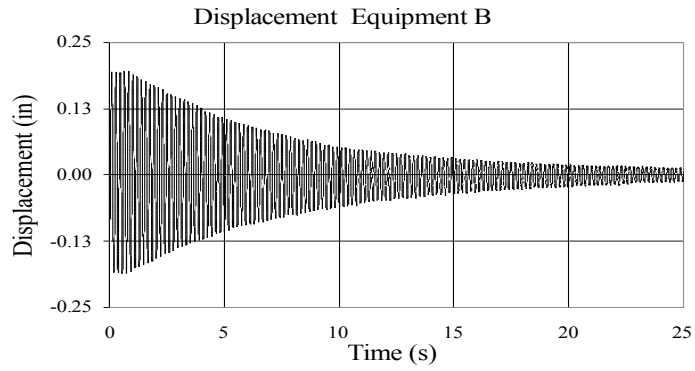
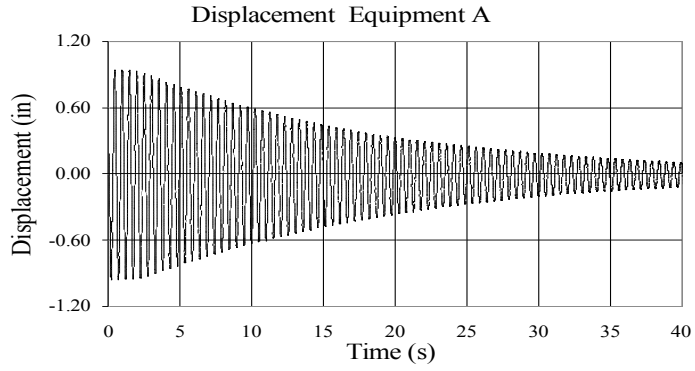
TEST RC-103
EQUIPMENT COMBINATION 5
SEFCOR CONNECTOR



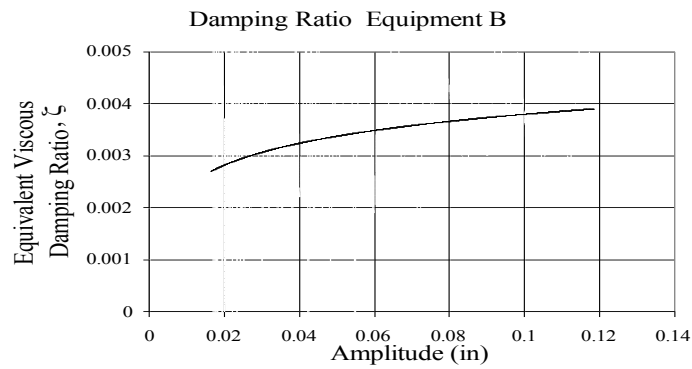
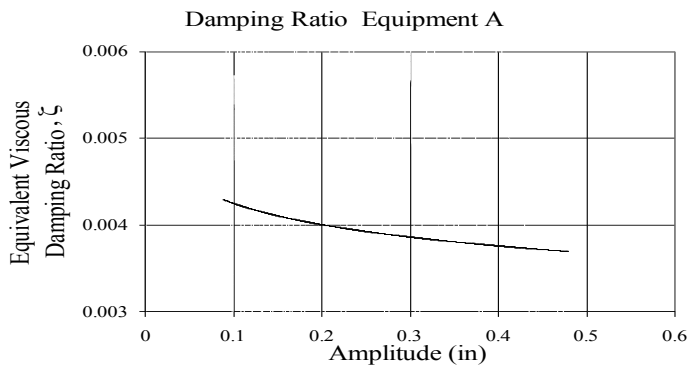
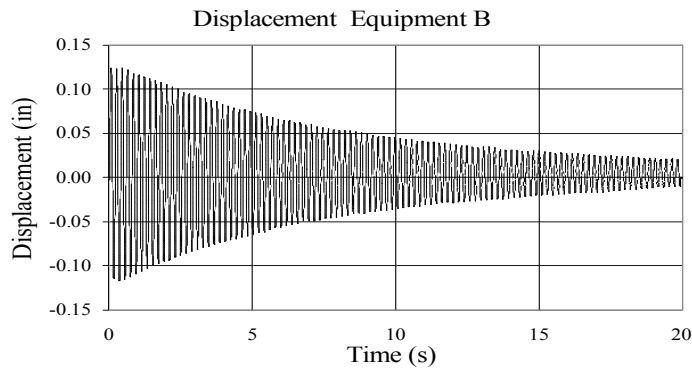
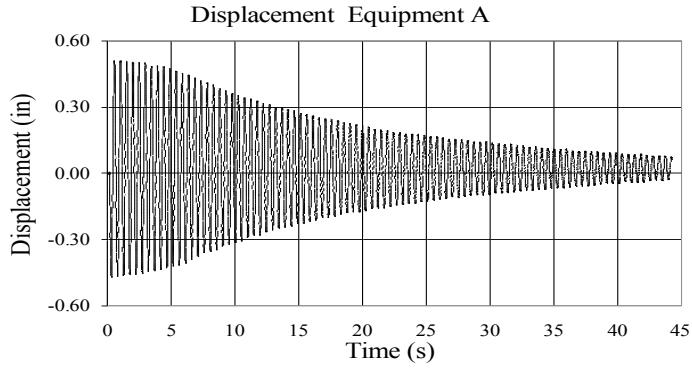
APPENDIX D

RESULTS OF DAMPING EVALUATION TESTS

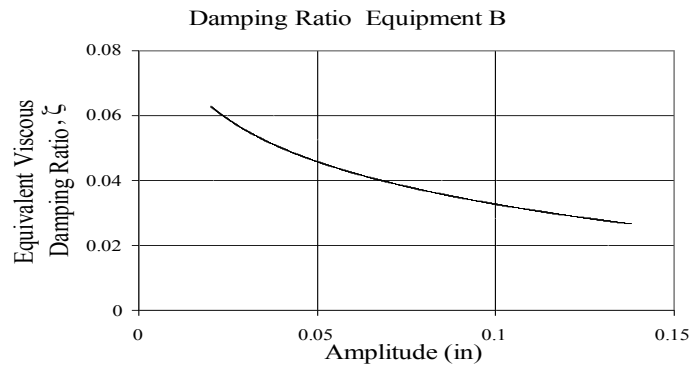
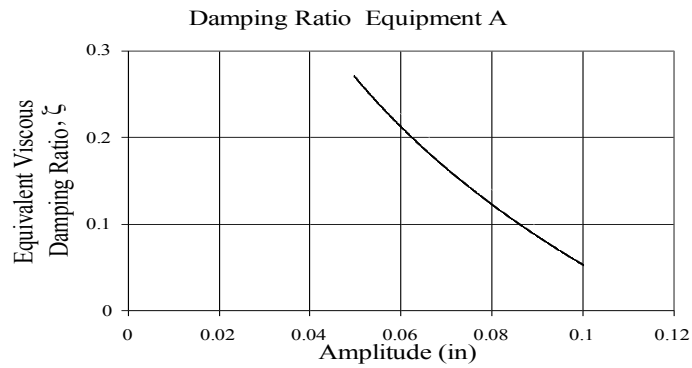
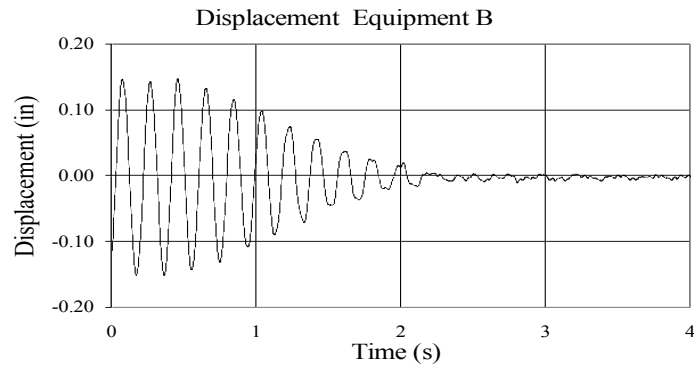
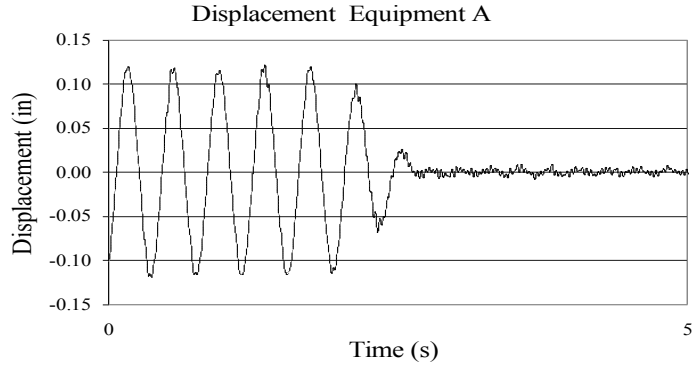
TEST RC-2 AND TEST RC-3 EQUIPMENT COMBINATION 2 UNCOUPLED



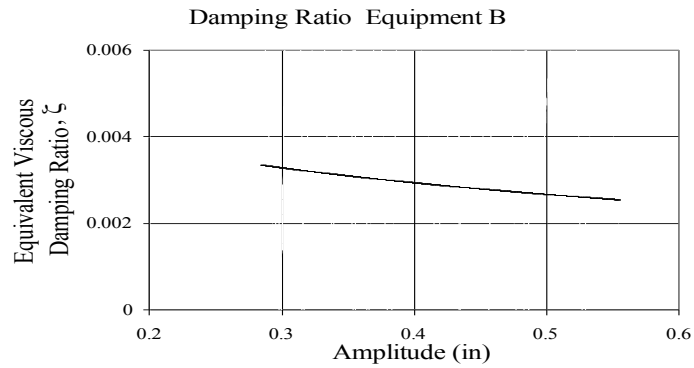
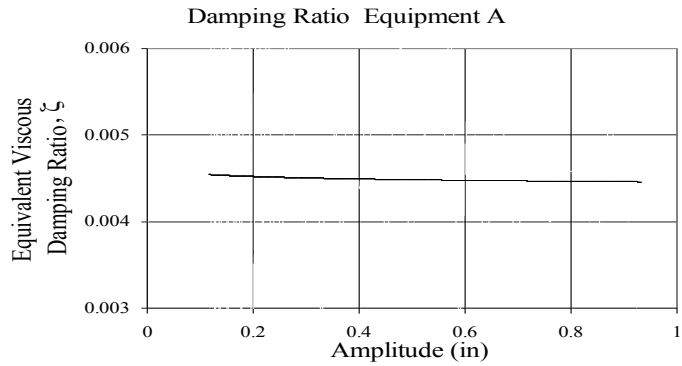
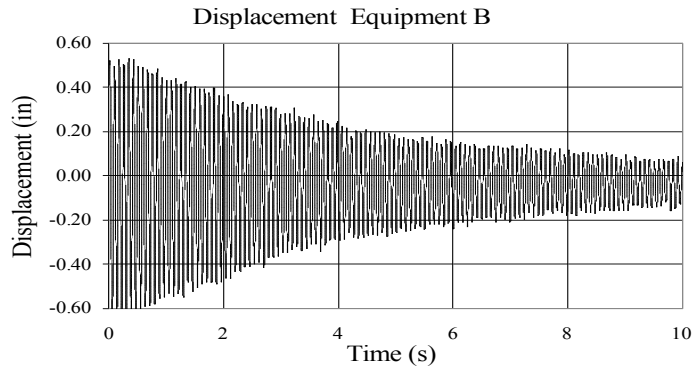
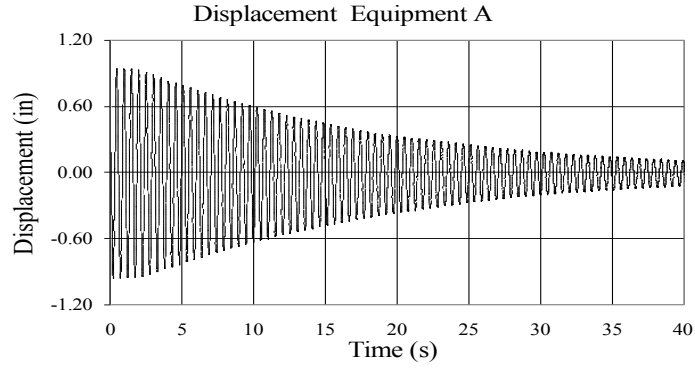
TEST RC-9 AND TEST RC-10 EQUIPMENT COMBINATION 2 FLEXIBLE STRAP CONNECTOR



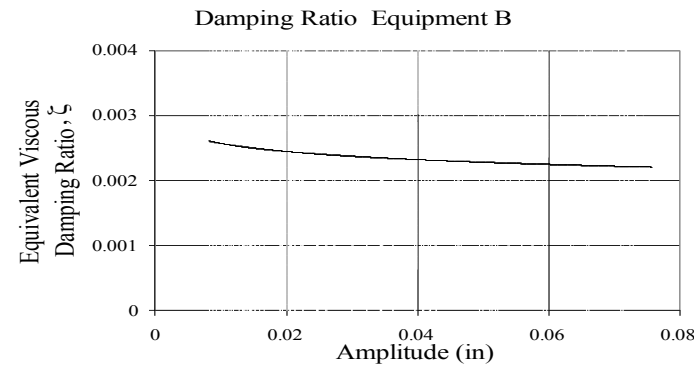
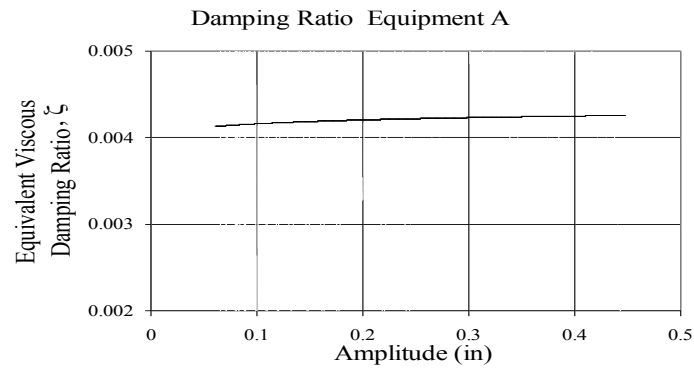
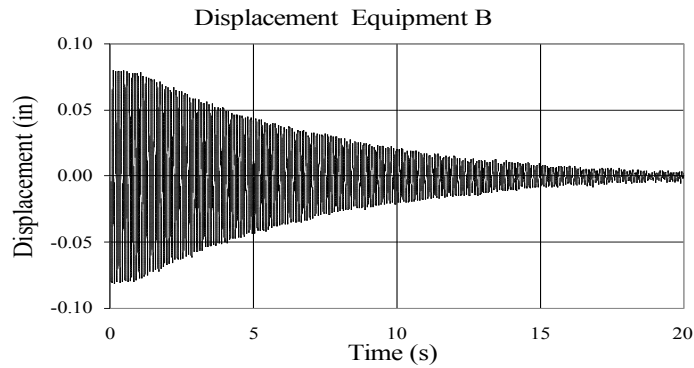
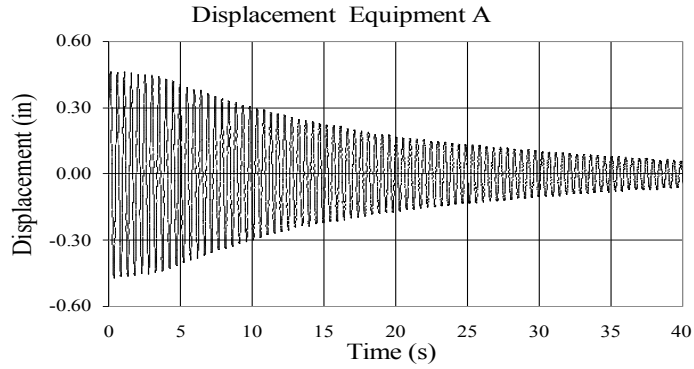
TEST RC-16 AND TEST RC-17 EQUIPMENT COMBINATION 2 BUS SLIDER CONNECTOR



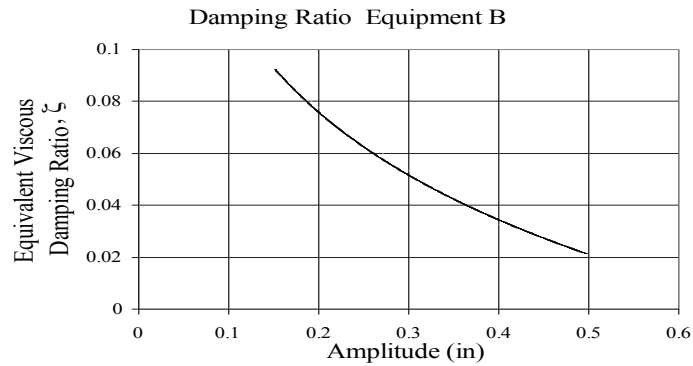
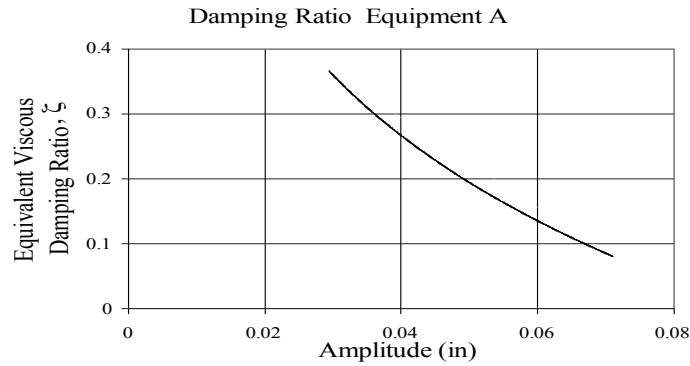
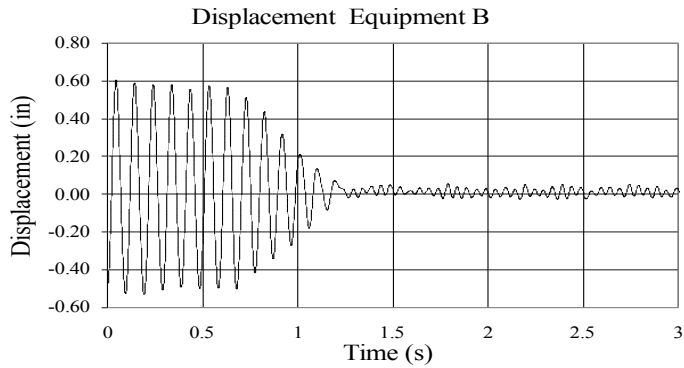
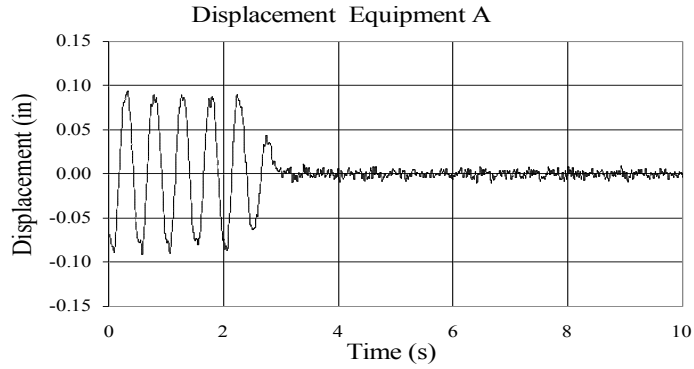
TEST RC-2 AND TEST RC-23 EQUIPMENT COMBINATION 5 UNCOUPLED



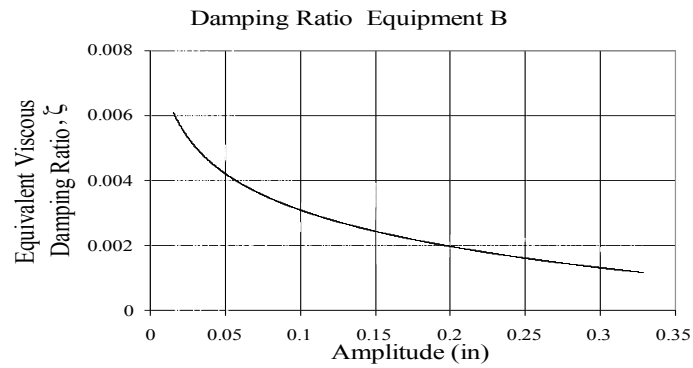
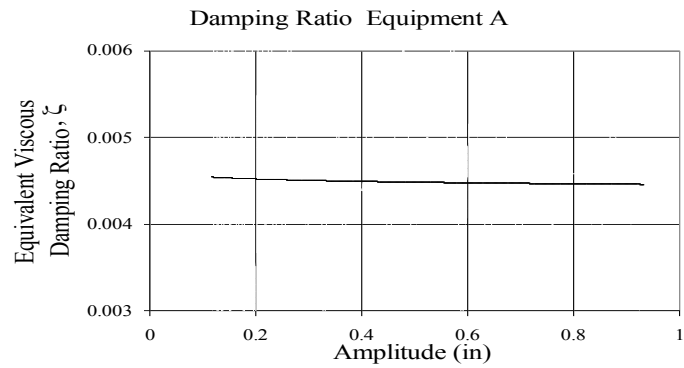
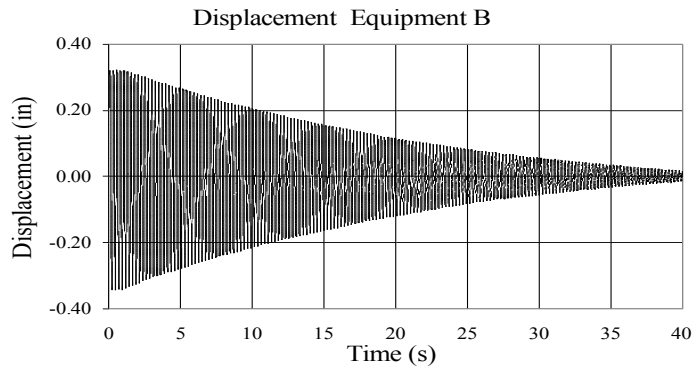
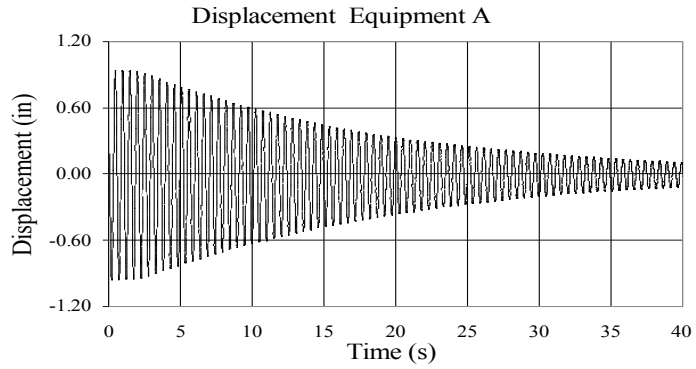
TEST RC-29 AND TEST RC-30 EQUIPMENT COMBINATION 5 FLEXIBLE STRAP CONNECTOR



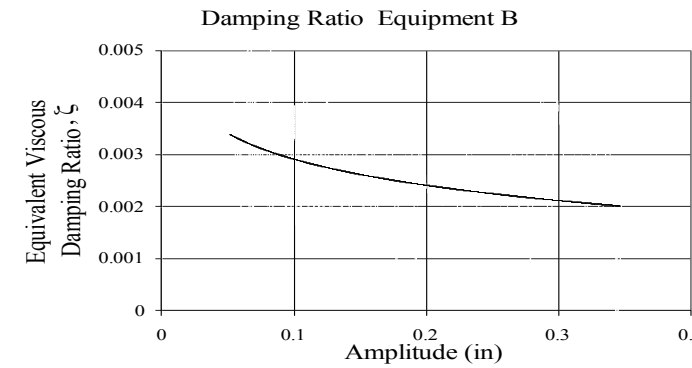
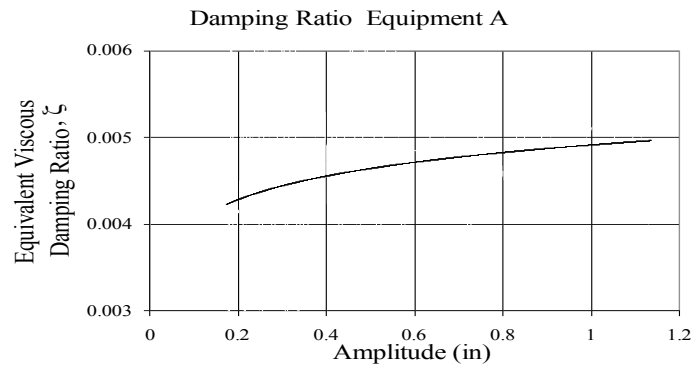
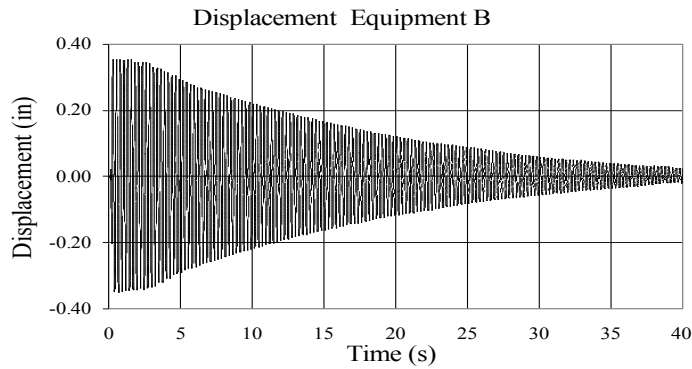
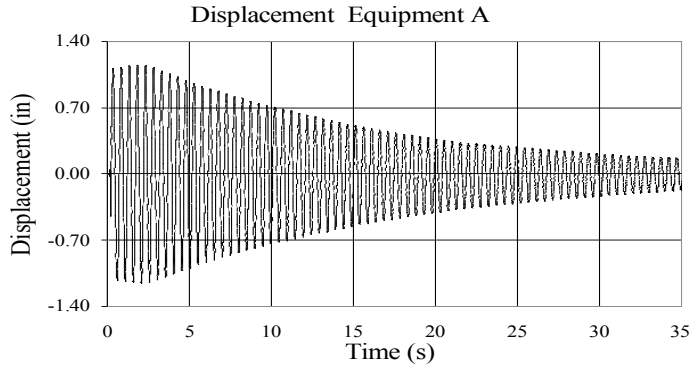
TEST RC-36 AND TEST RC-37 EQUIPMENT COMBINATION 5 BUS SLIDER CONNECTOR



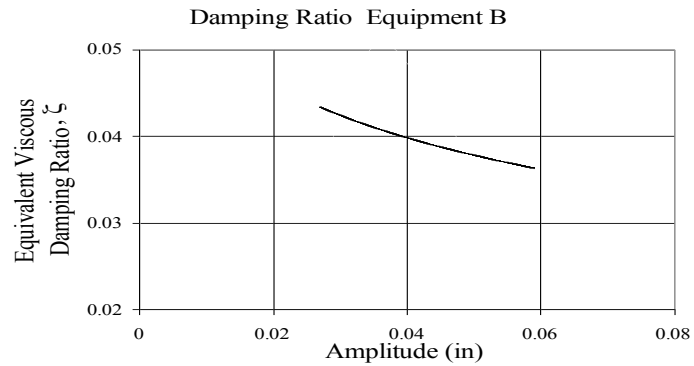
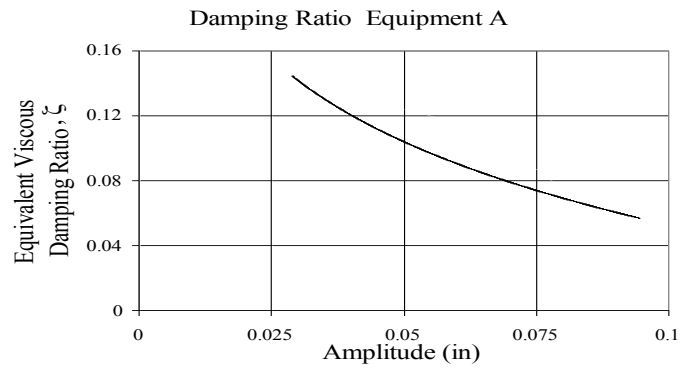
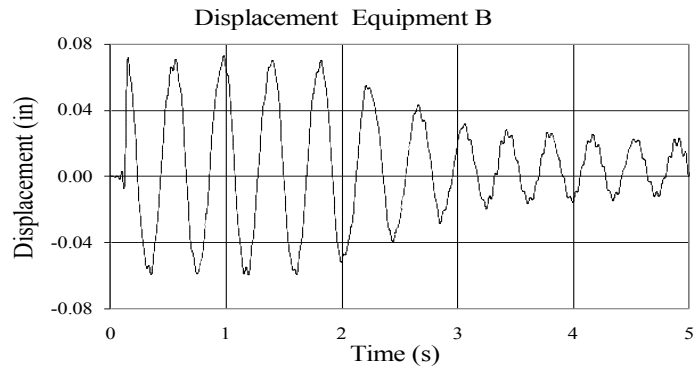
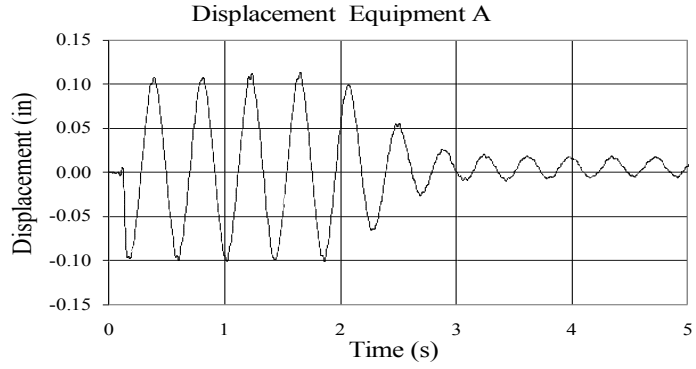
TEST RC-2 AND TEST RC-43 EQUIPMENT COMBINATION 1 UNCOUPLED



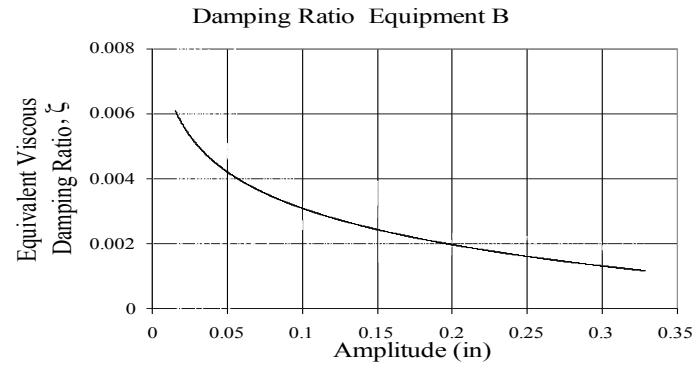
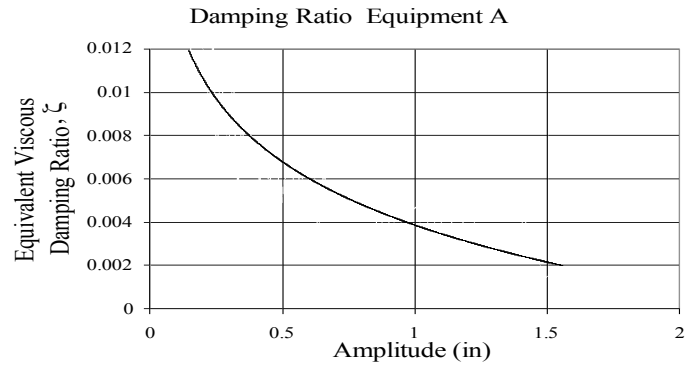
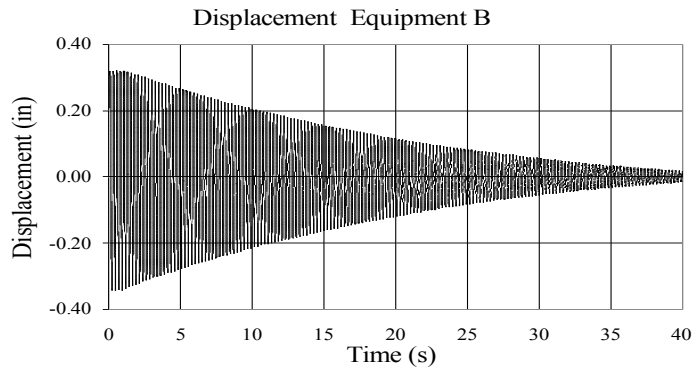
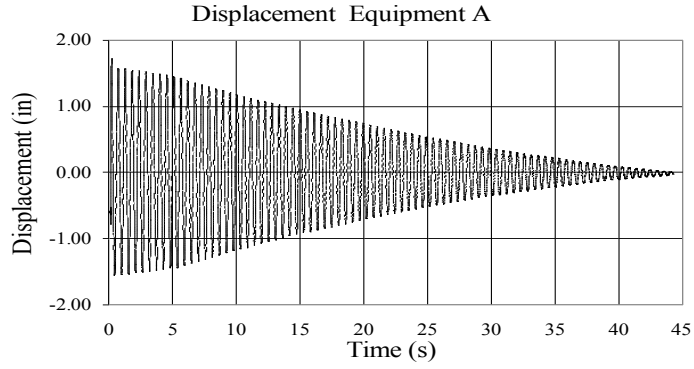
TEST RC-49 AND TEST RC-50 EQUIPMENT COMBINATION 1 FLEXIBLE STRAP CONNECTOR



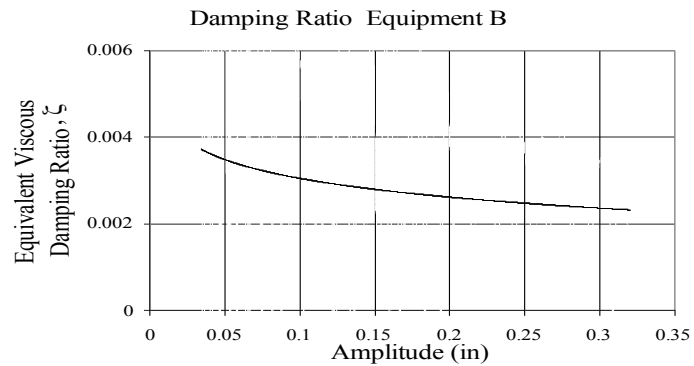
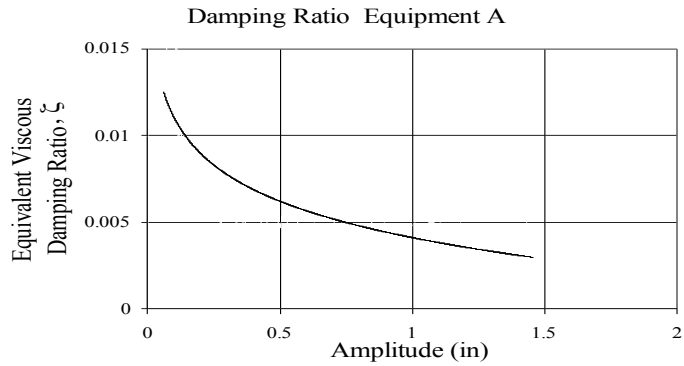
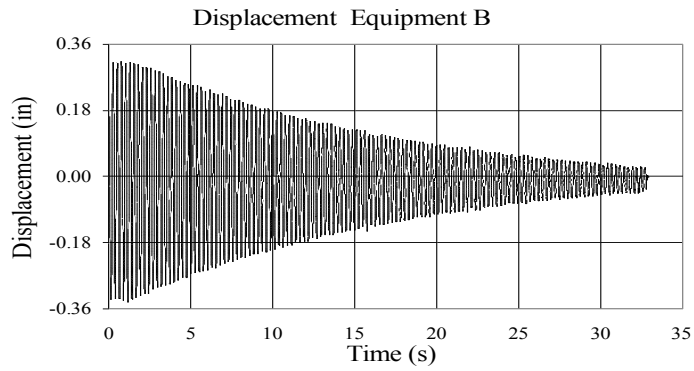
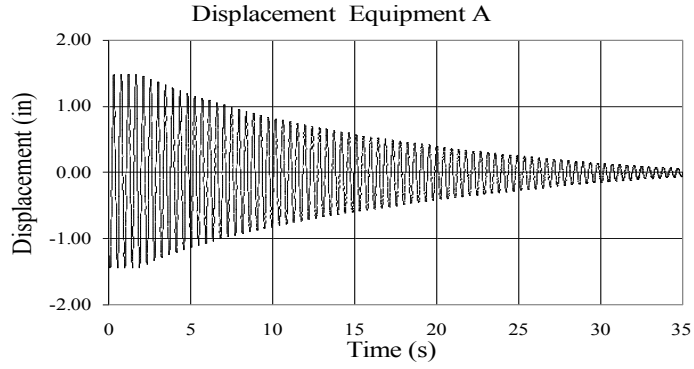
TEST RC-56 AND TEST RC-57 EQUIPMENT COMBINATION 1 BUS SLIDER CONNECTOR



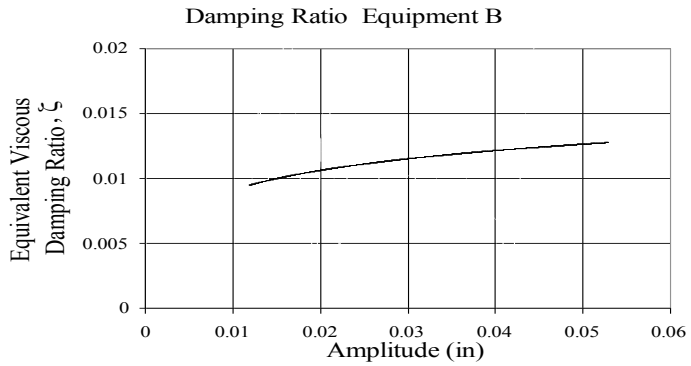
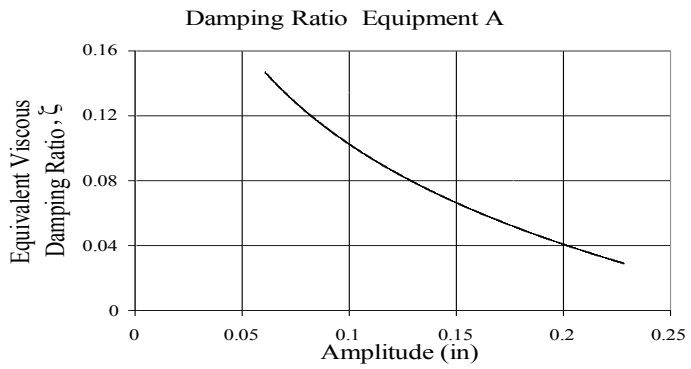
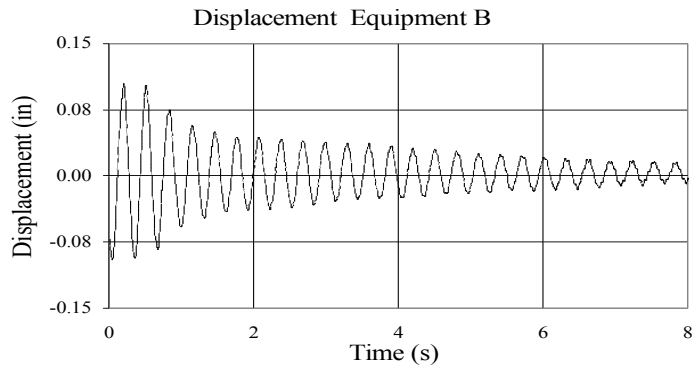
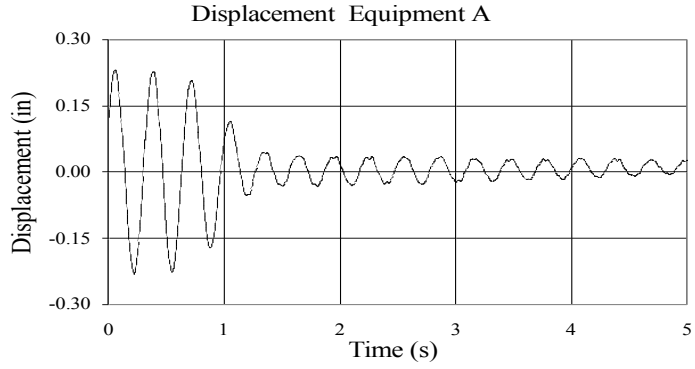
TEST RC-63 AND TEST RC-43 EQUIPMENT COMBINATION 3 UNCOUPLED



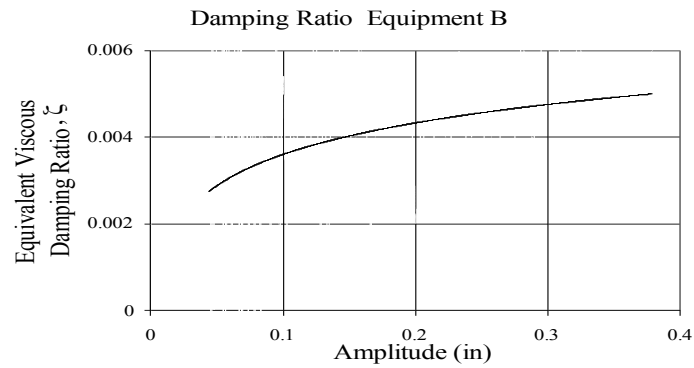
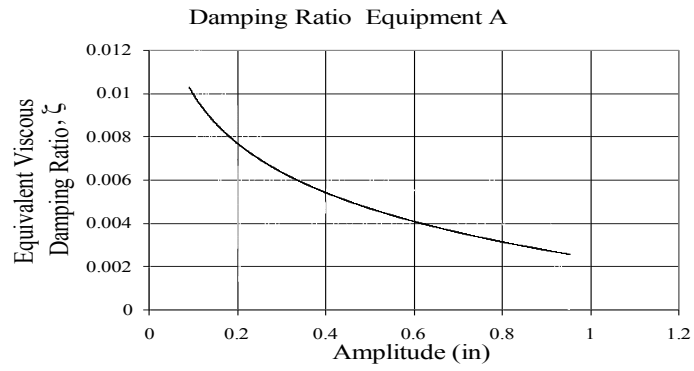
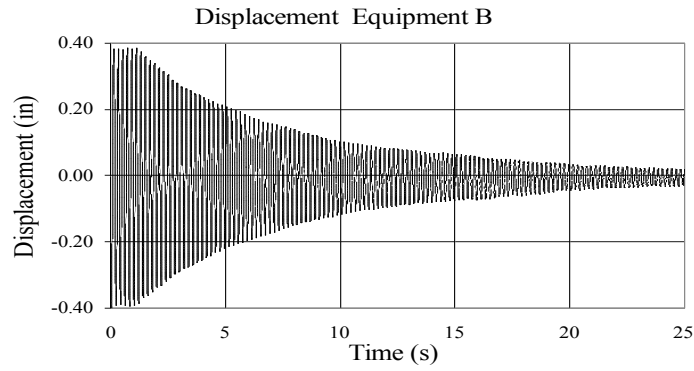
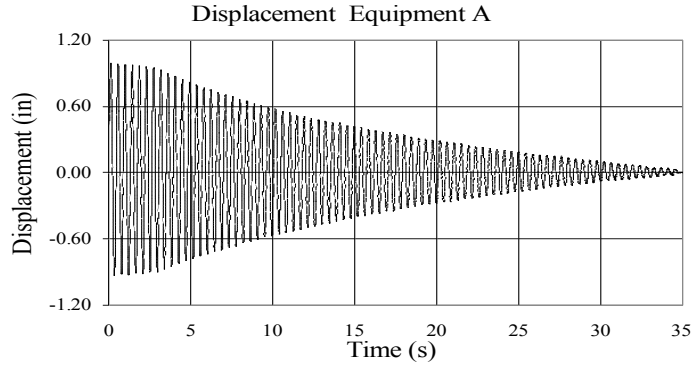
TEST RC-69 AND TEST RC-70 EQUIPMENT COMBINATION 3 FLEXIBLE STRAP CONNECTOR



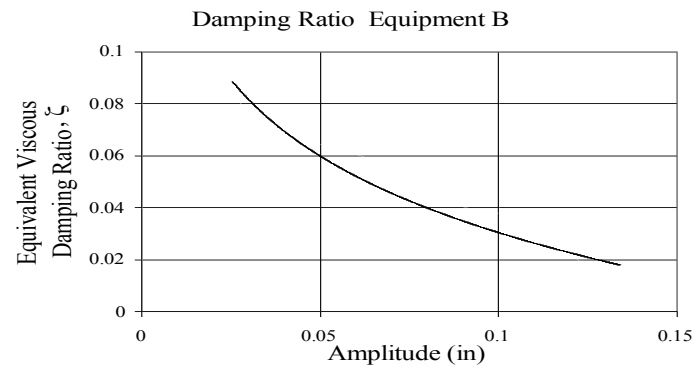
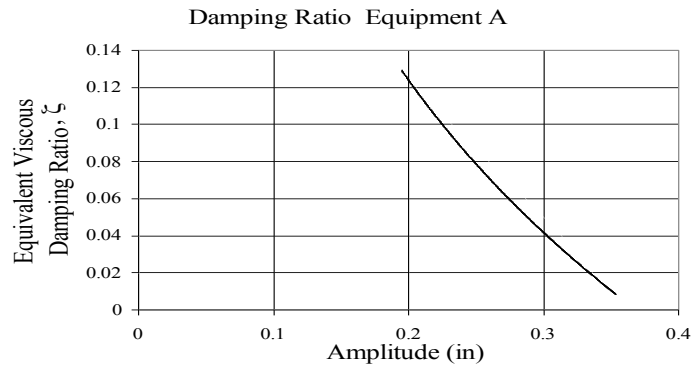
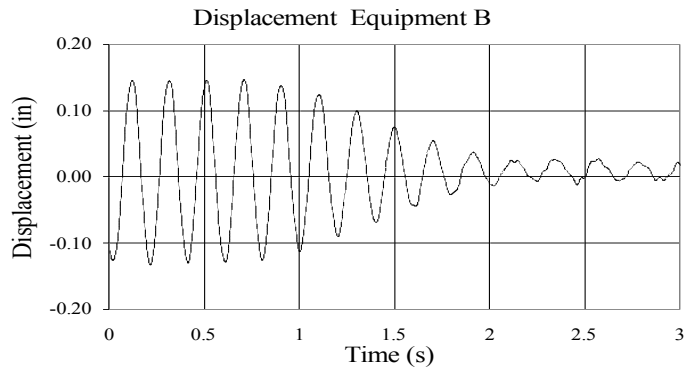
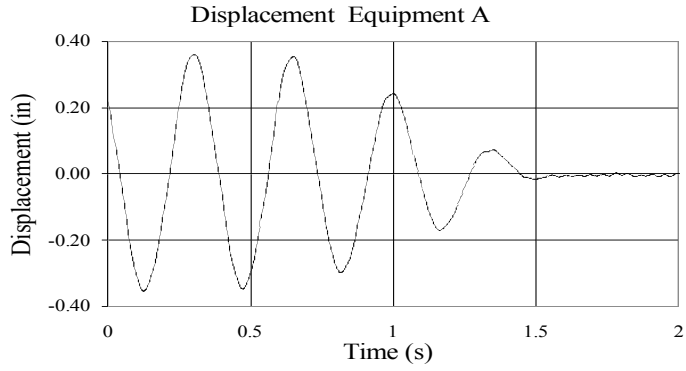
TEST RC-76 AND TEST RC-77 EQUIPMENT COMBINATION 3 BUS SLIDER CONNECTOR



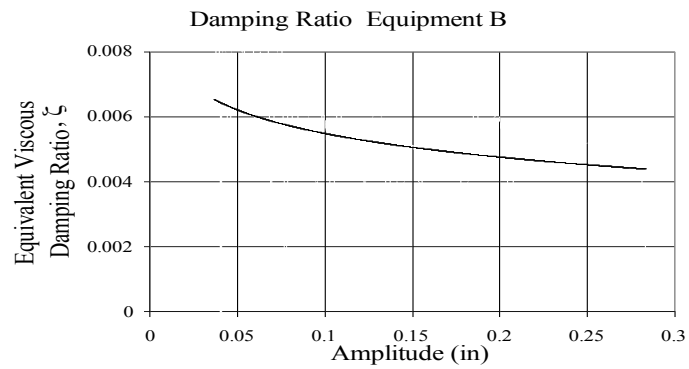
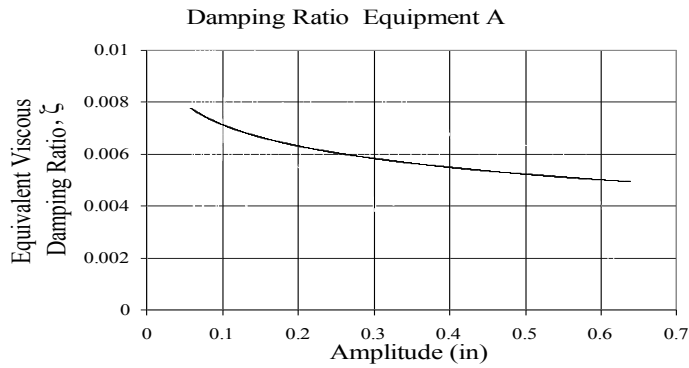
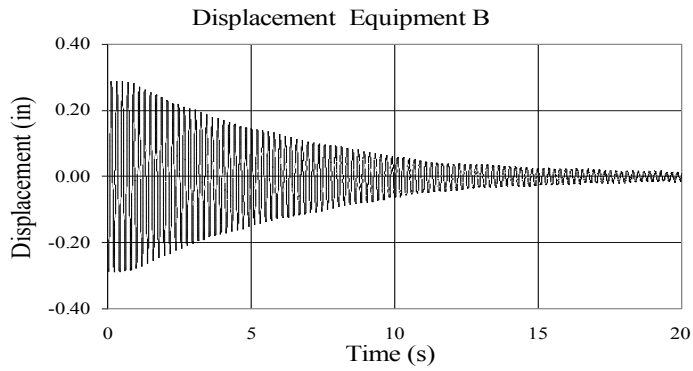
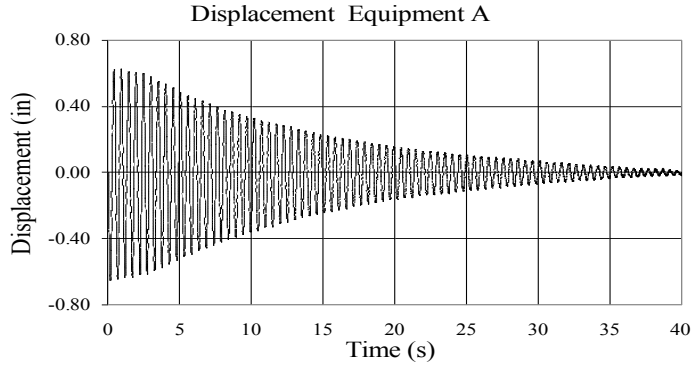
TEST RC-83 AND TEST RC-84 EQUIPMENT COMBINATION 4 FLEXIBLE STRAP CONNECTOR



TEST RC-90 AND TEST RC-91 EQUIPMENT COMBINATION 4 BUS SLIDER CONNECTOR



TEST RC-97 AND TEST RC-98 EQUIPMENT COMBINATION 2 SEFCOR CONNECTOR



TEST RC-104 AND TEST RC-105 EQUIPMENT COMBINATION 5 SEFCOR CONNECTOR

