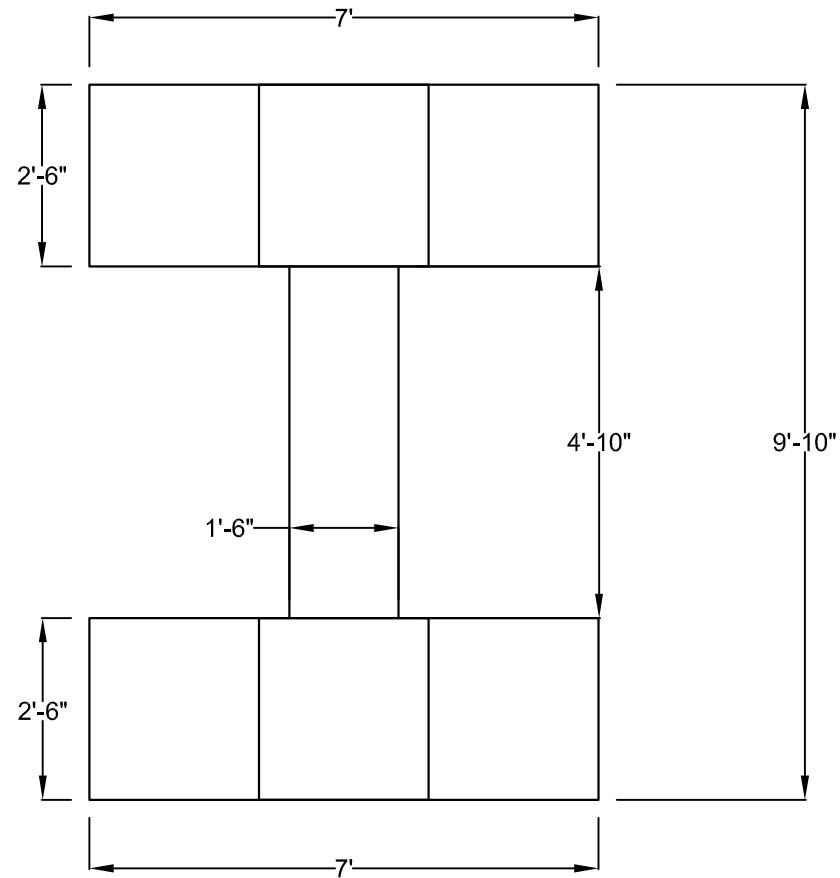


Seismic Column Specimens – Purdue University (Bowen Laboratory)

General Notes:

- A total of (4) specimens will be constructed, (2) identical “Biaxial” specimens and (2) “Uniaxial” specimens which are identical except for the column ties.
- All specimens will be constructed at the Bowen Laboratory (West Lafayette, IN.) at the same time.
- Purdue University will furnish all of the reinforcement for the column sections of each of the “Biaxial” and “Uniaxial” specimens (8C, 7C, 3T, and 2T). In addition Purdue University will assemble the column reinforcement cages for all of the specimens.
- Each of the specimens will be cast vertically.
- All concrete will be normal weight concrete, IMI mix #003 (2500A) with 4”-6” slump.
- All steel reinforcing bars (except those furnished by Purdue University for the column sections) will be grade 60 conforming to ASTM A615.

Front and Side Views



Seismic Column Specimens

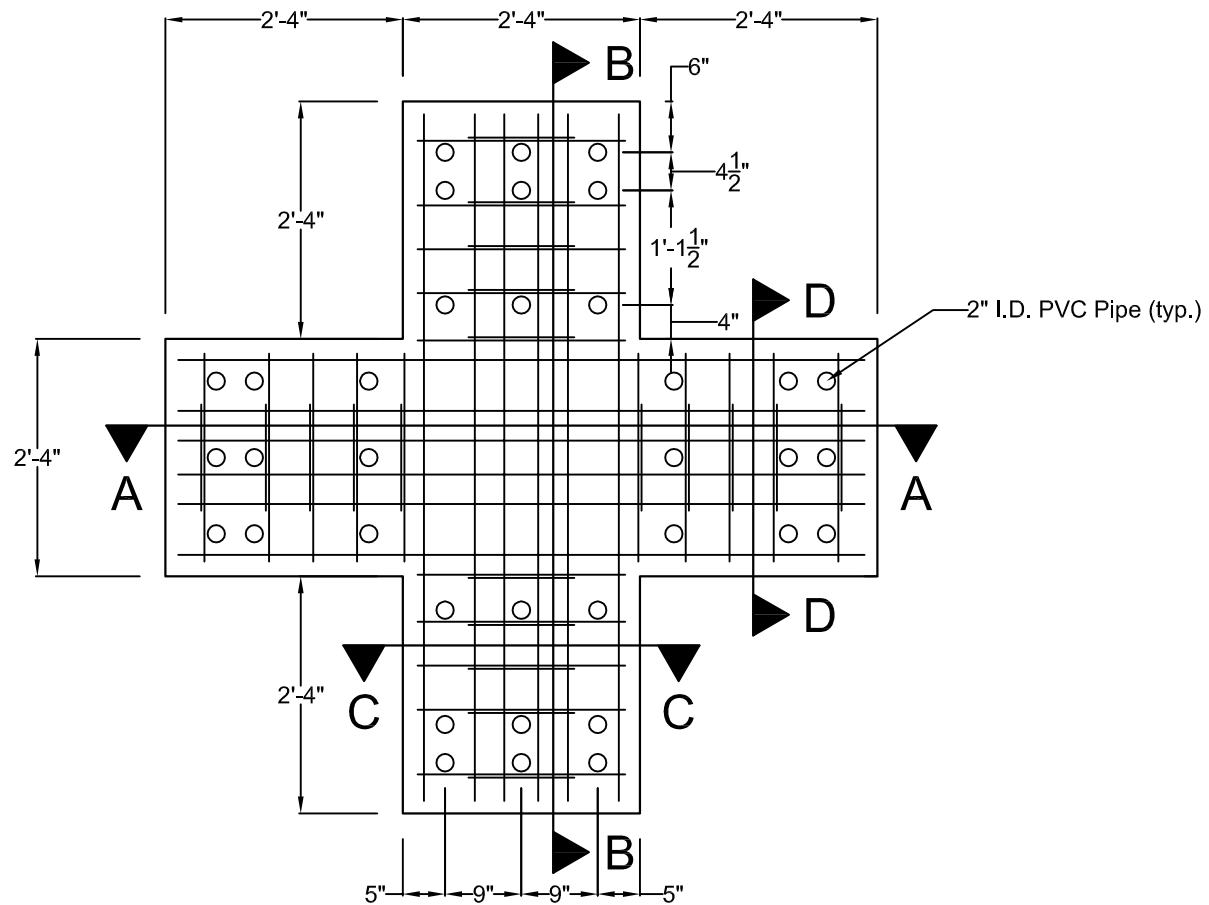
Biaxial Specimen Overall Dimensions

Sheet: 1 of 14

Date: 10-03-07

Purdue University

Top Beam (Plan View)



Seismic Column Specimens

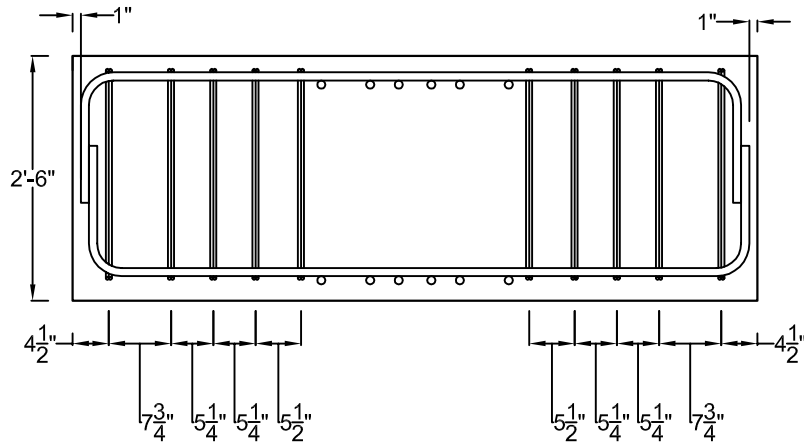
Biaxial Specimen Top Beam Reinf.

Sheet: 2 of 14

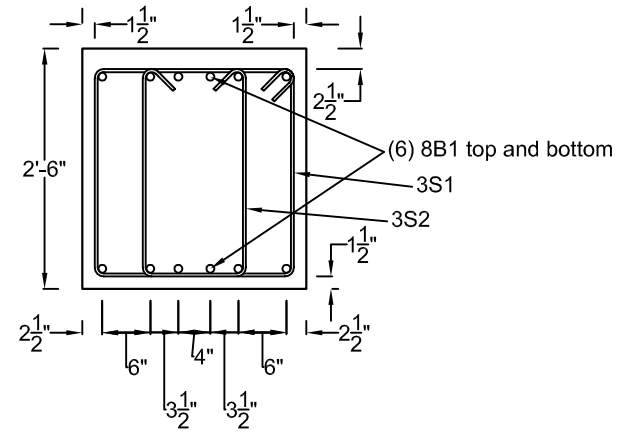
Date: 10-03-07

Purdue University

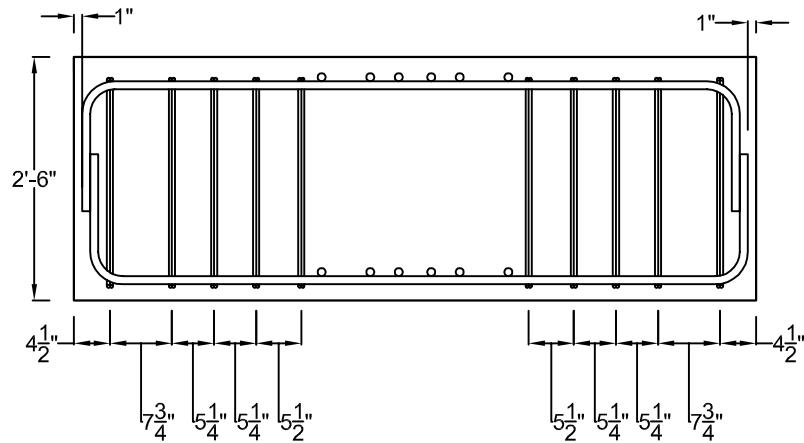
Section A-A



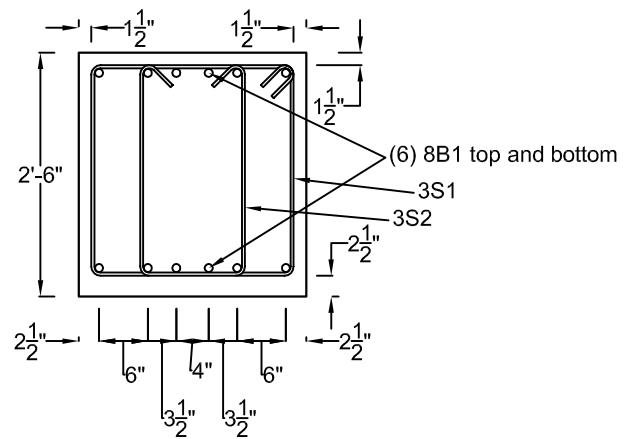
Section C-C



Section B-B



Section D-D



Seismic Column Specimens

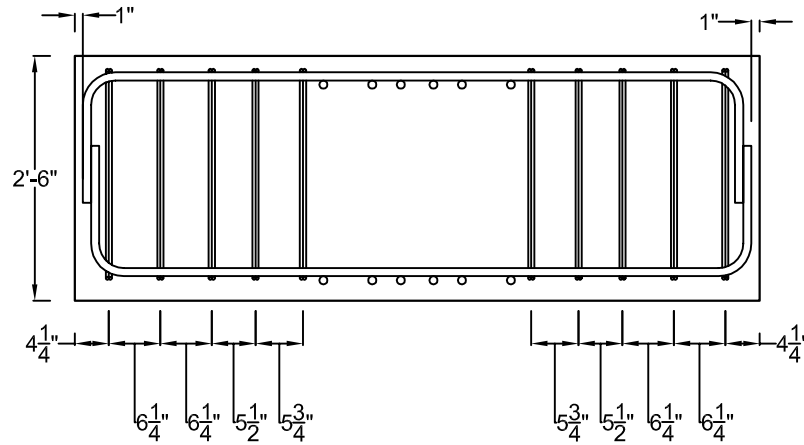
Biaxial Specimen Top Beam Sections

Sheet: 3 of 14

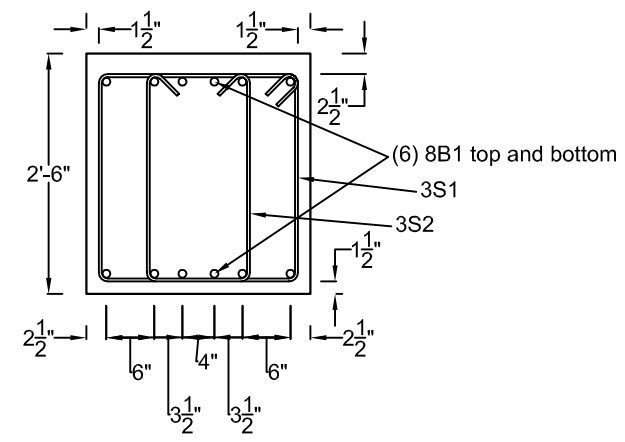
Date: 10-03-07

Purdue University

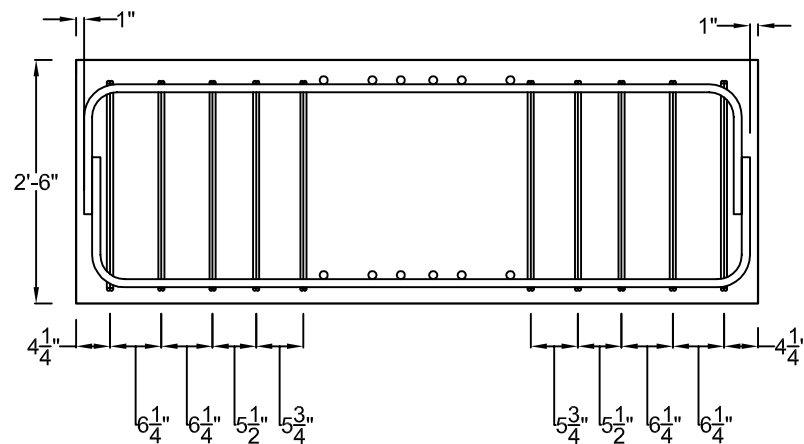
Section A-A



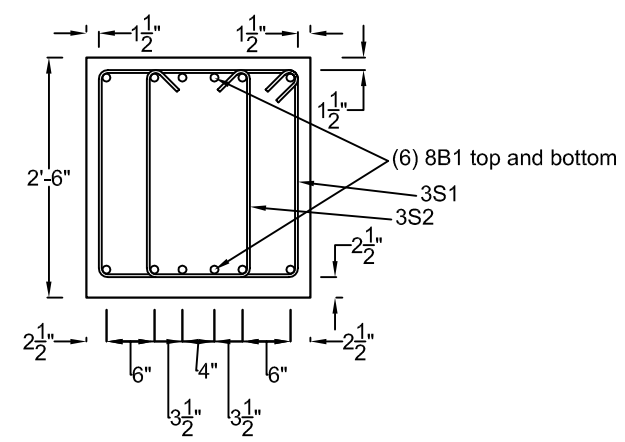
Section C-C



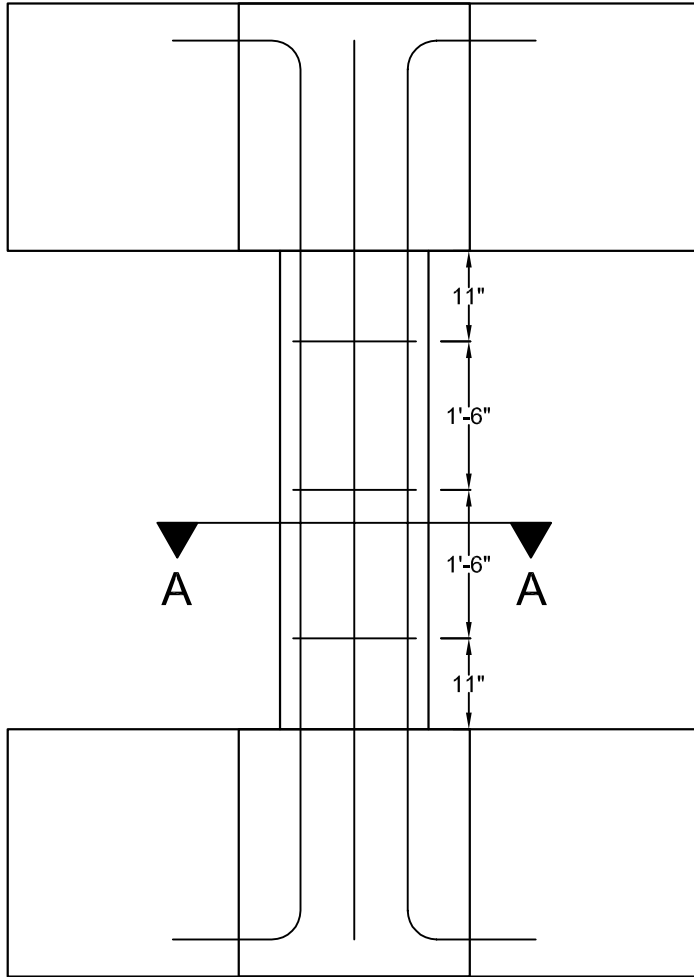
Section B-B



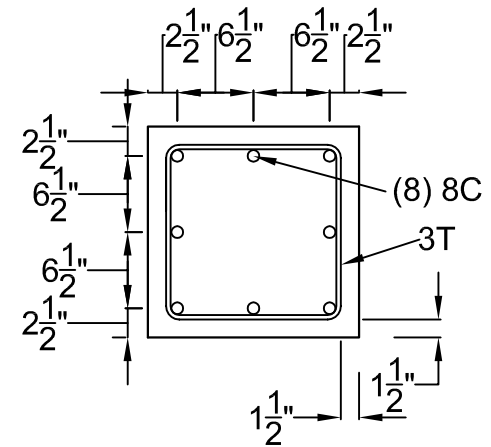
Section D-D



Seismic Column Specimens



Section A-A



Seismic Column Specimens

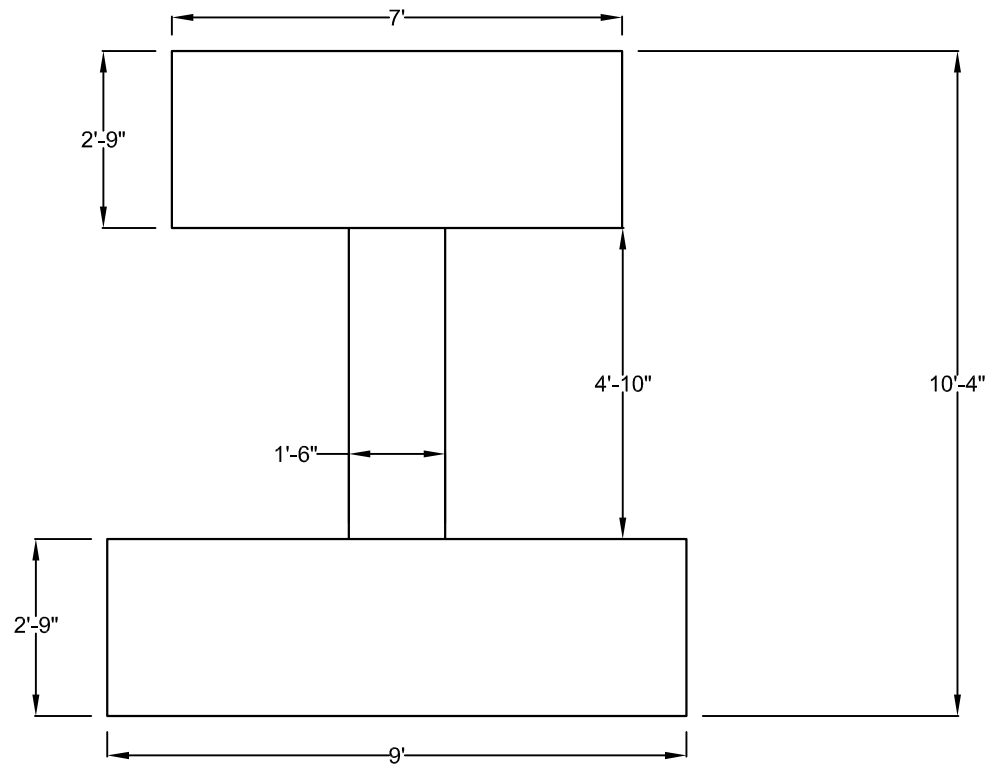
Biaxial Specimen Column Reinf.

Sheet: 6 of 14

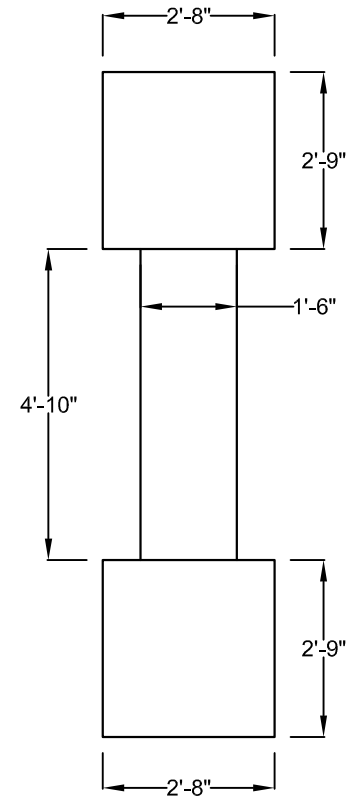
Date: 10-03-07

Purdue University

Front View



Side View



Seismic Column Specimens

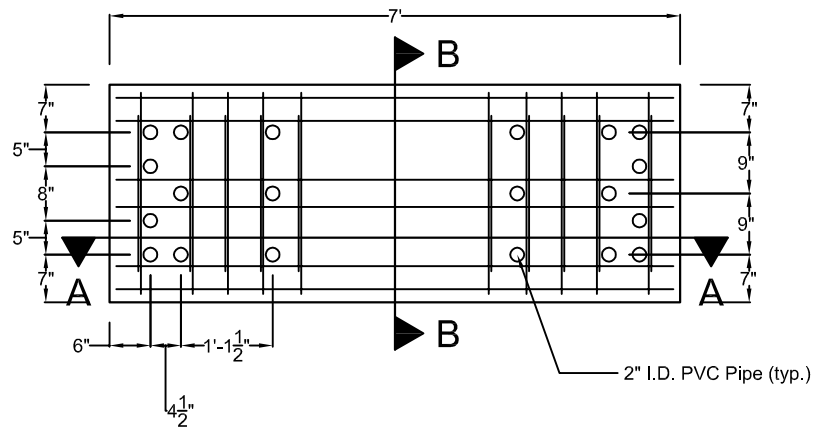
Uniaxial Specimen Overall Dimensions

Sheet: 7 of 14

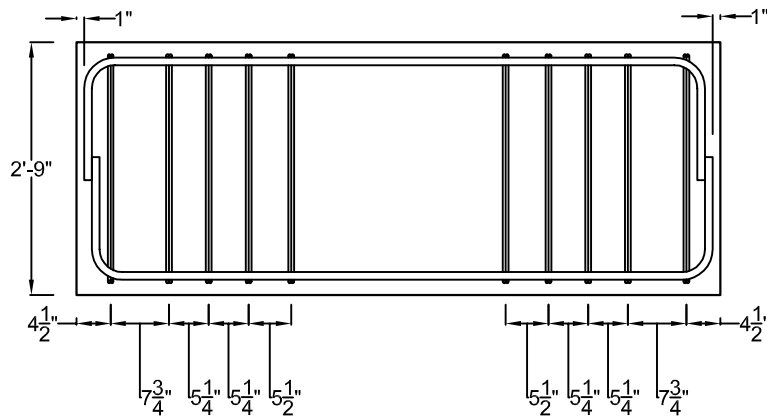
Date: 10-03-07

Purdue University

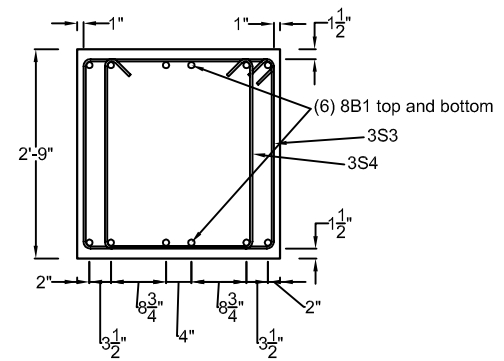
Top Beam (Plan View)



Section A-A



Section B-B



Seismic Column Specimens

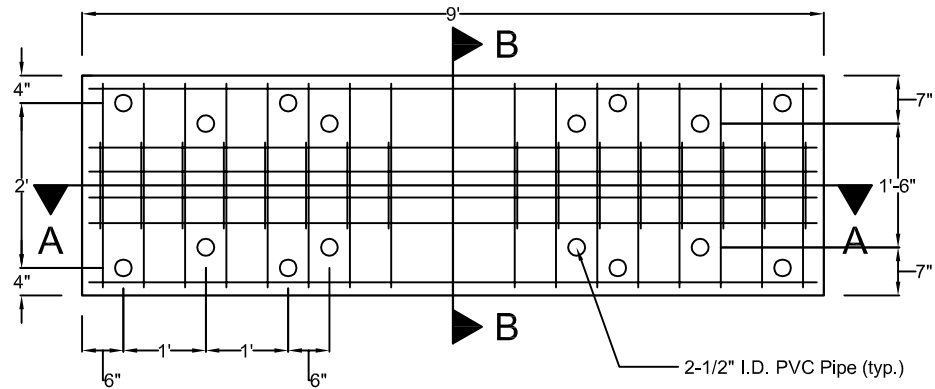
Uniaxial Specimen Top Beam Reinf.

Sheet: 8 of 14

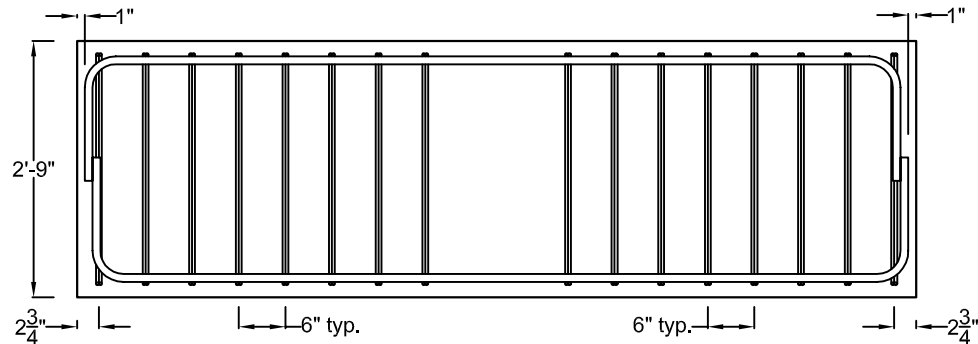
Date: 10-03-07

Purdue University

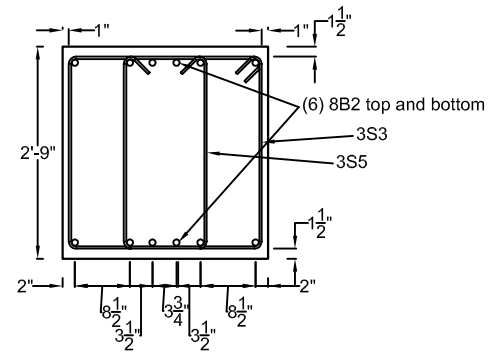
Bottom Beam (Plan View)



Section A-A



Section B-B



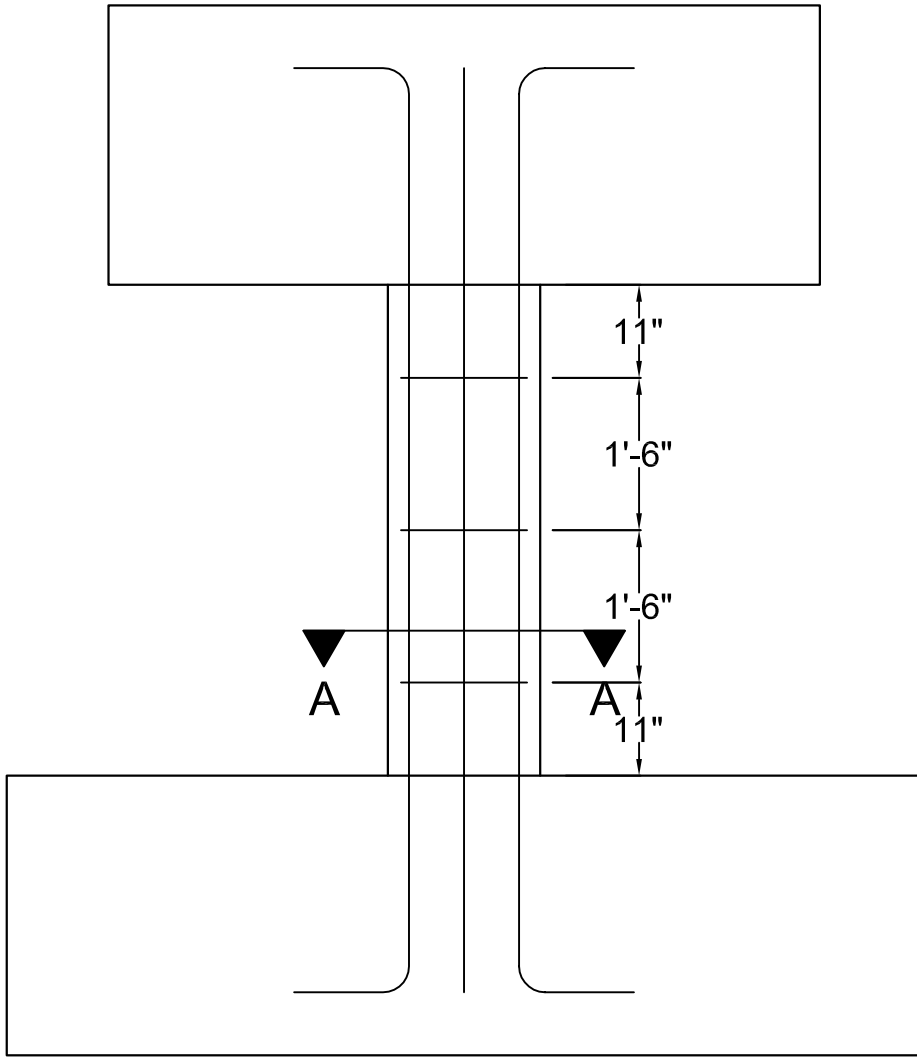
Seismic Column Specimens

Uniaxial Specimen Bottom Beam Reinf.

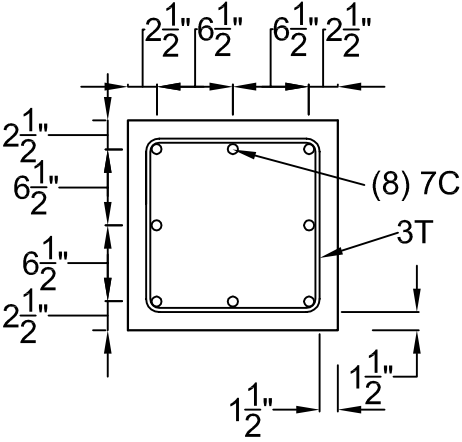
Sheet: 9 of 14

Date: 10-03-07

Purdue University



Section A-A



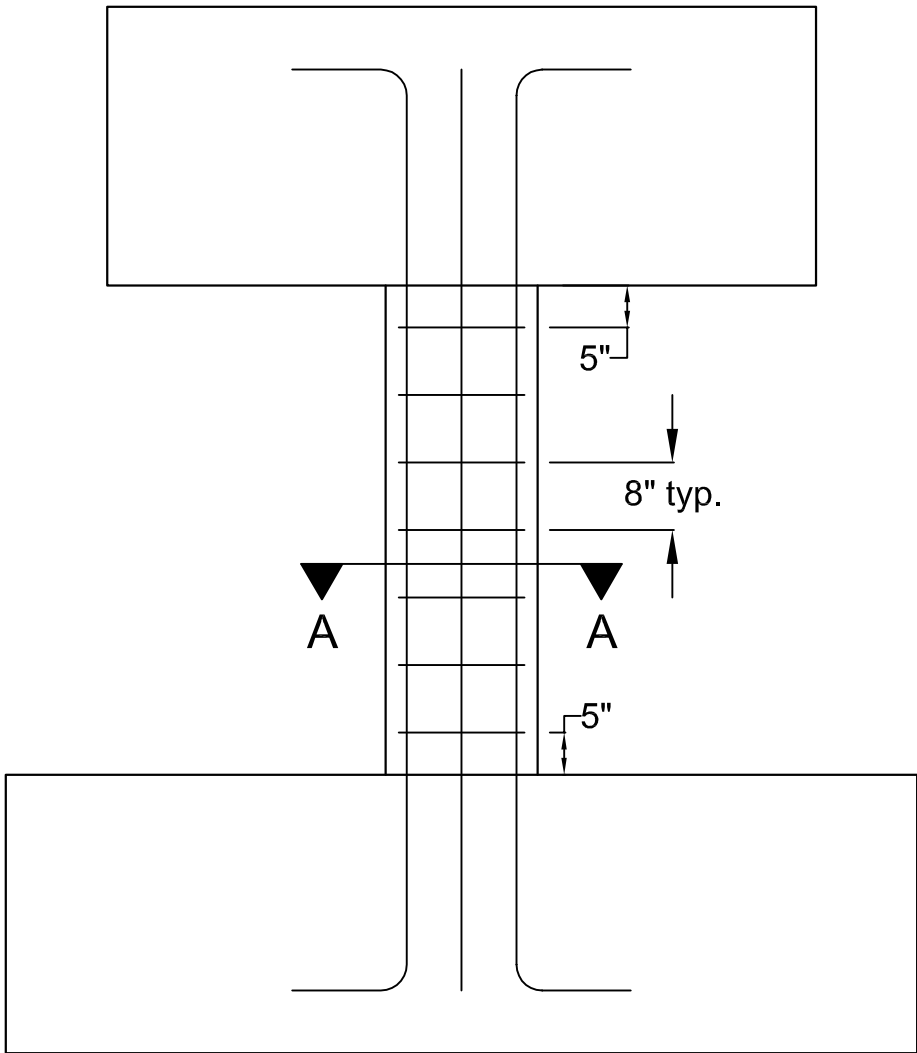
Seismic Column Specimens

Uniaxial Specimen 1 Column Reinf.

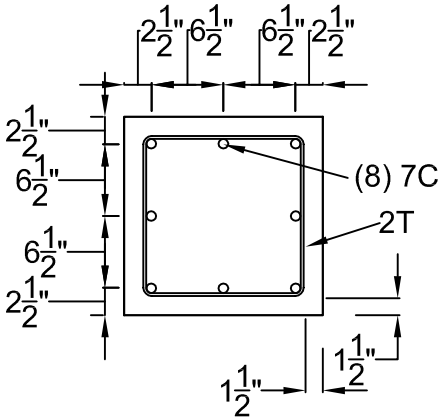
Sheet: 10 of 14

Date: 10-03-07

Purdue University



Section A-A



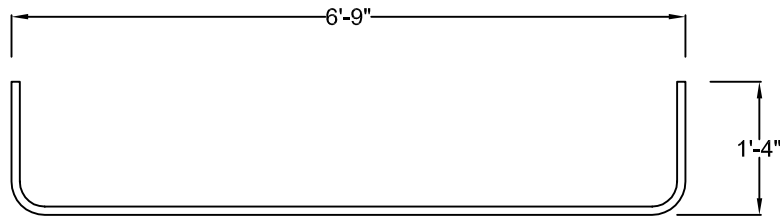
Seismic Column Specimens

Uniaxial Specimen 2 Column Reinf.

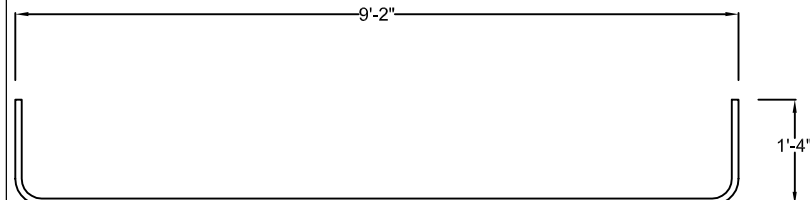
Sheet: 11 of 14

Date: 10-03-07

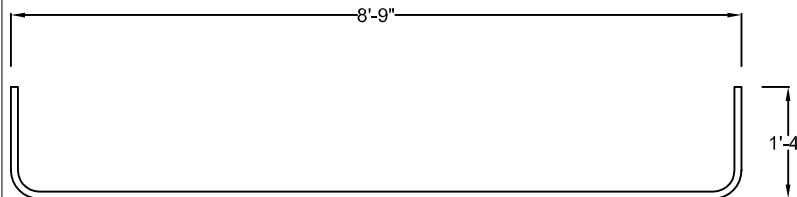
Purdue University



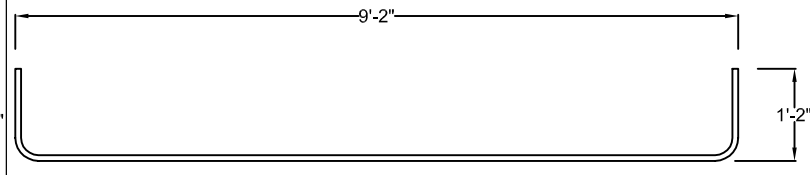
8B1 (#8 bar)



8C (#8 bar)



8B2 (#8 bar)



7C (#7 bar)

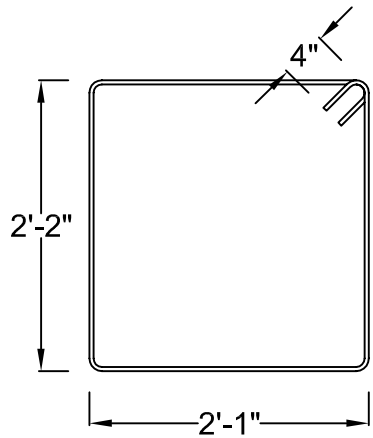
Seismic Column Specimens

Steel Details 1

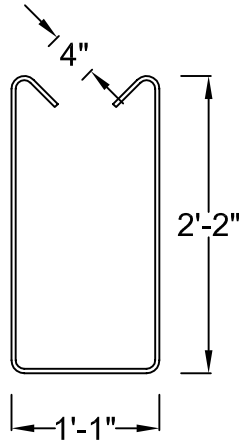
Sheet: 12 of 14

Date: 10-03-07

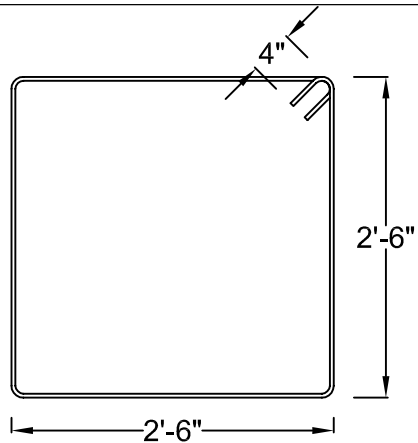
Purdue University



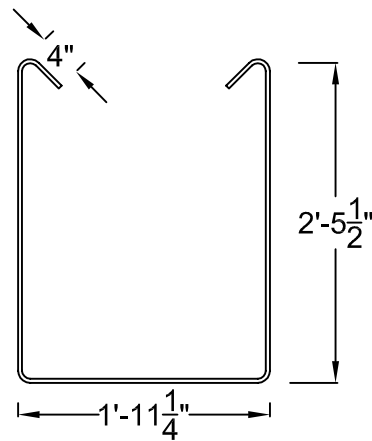
3S1 (#3 bar)



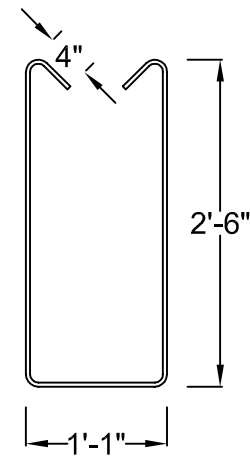
3S2 (#3 bar)



3S3 (#3 bar)



3S4 (#3 bar)



3S5 (#3 bar)

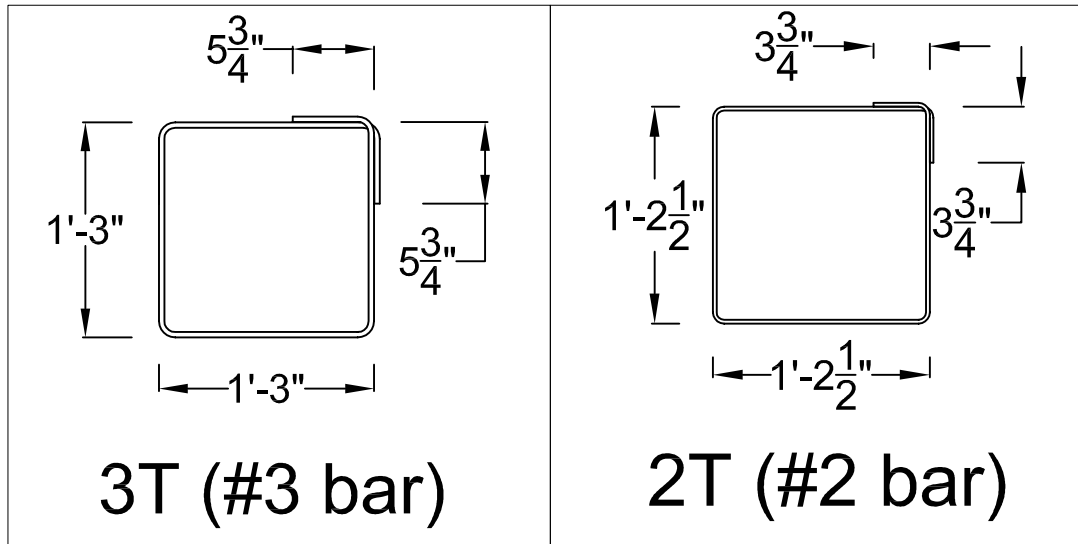
Seismic Column Specimens

Steel Details 2

Sheet: 13 of 14

Date: 10-03-07

Purdue University



Seismic Column Specimens

Steel Details 3

Sheet: 14 of 14

Date: 10-03-07

Purdue University