

Soil- Foundation- Structure Interaction

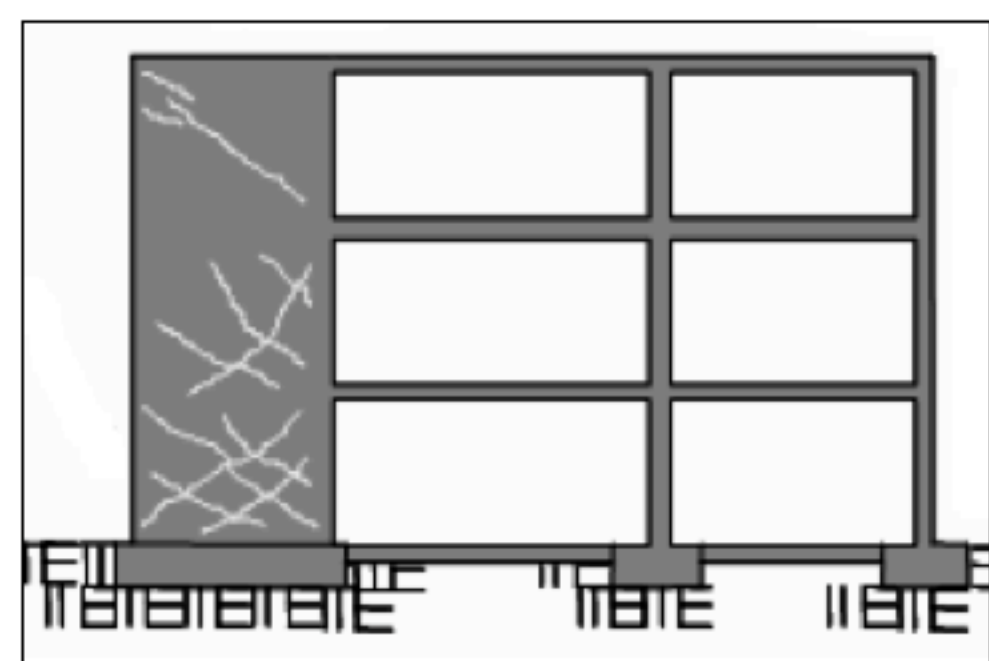


"Performance based engineering for buildings requires characterization of the effects of foundation & site geotechnical conditions."

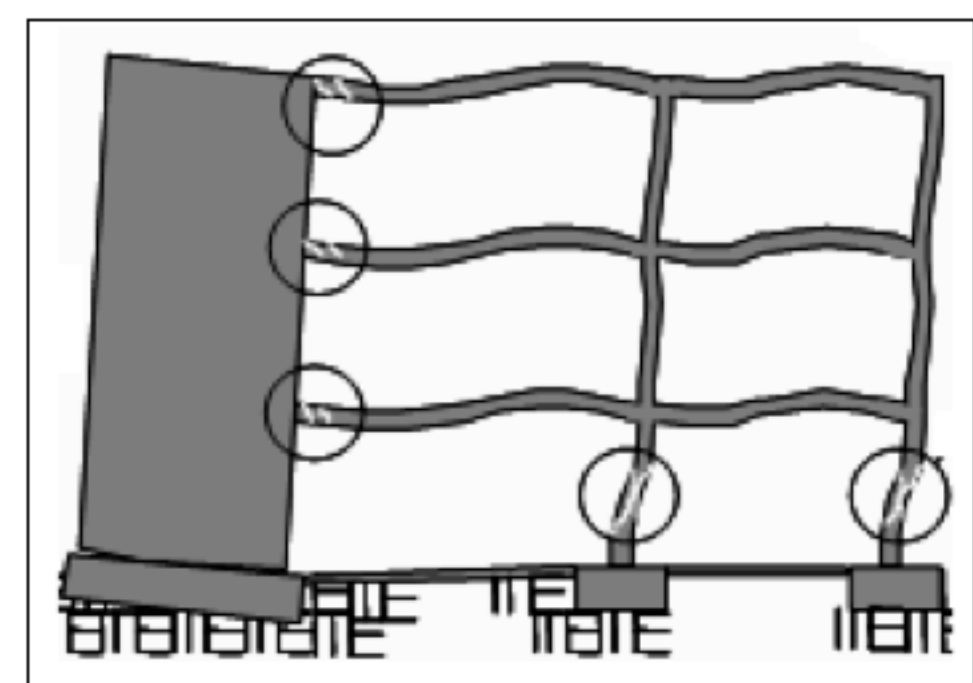
2007 EERI PBEE Seminar Series
C.D Comartin

PEER is contributing to the solution through...

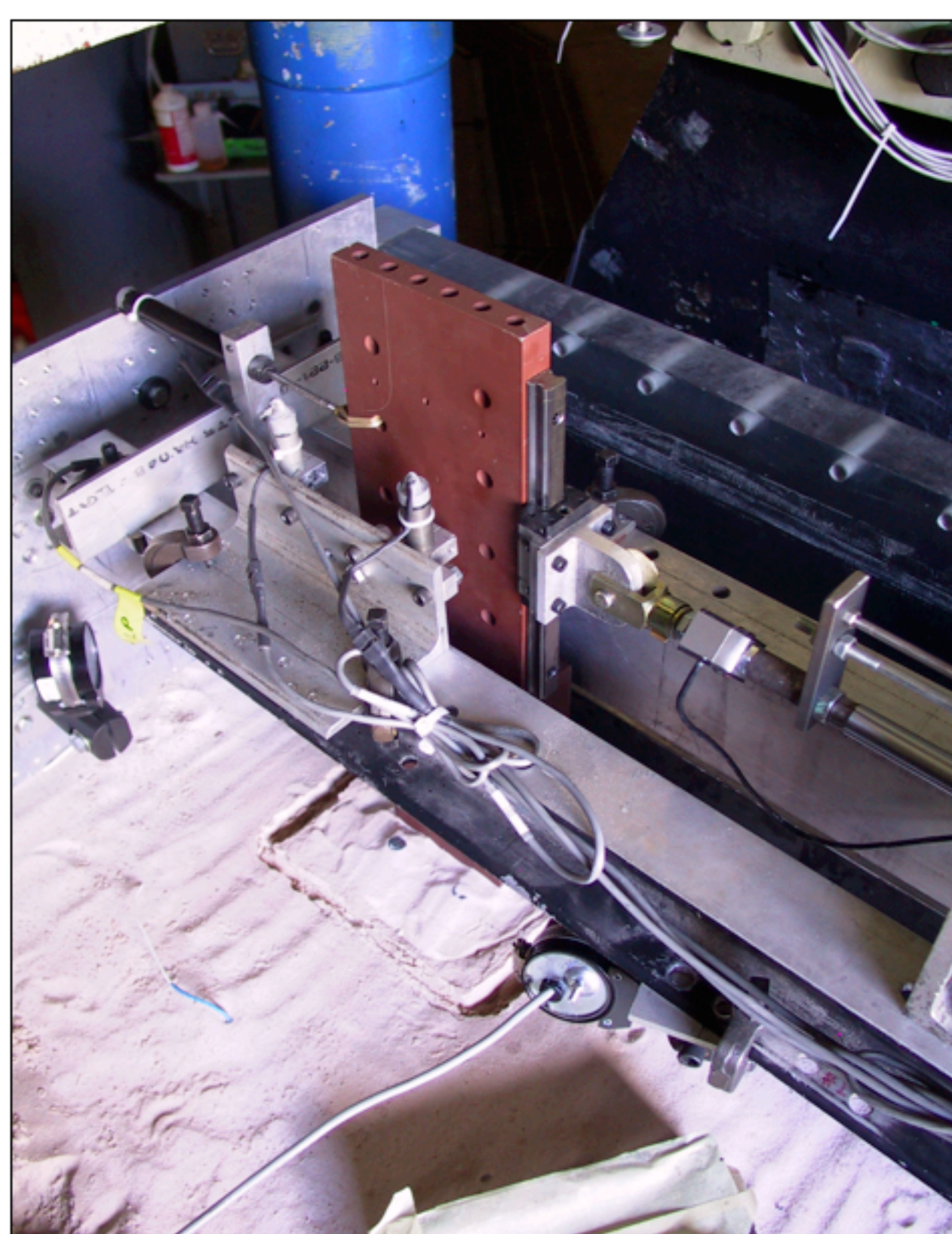
Importance



*Foundation behavior can affect inelastic structural response and performance.
See EERI seminar notes.*

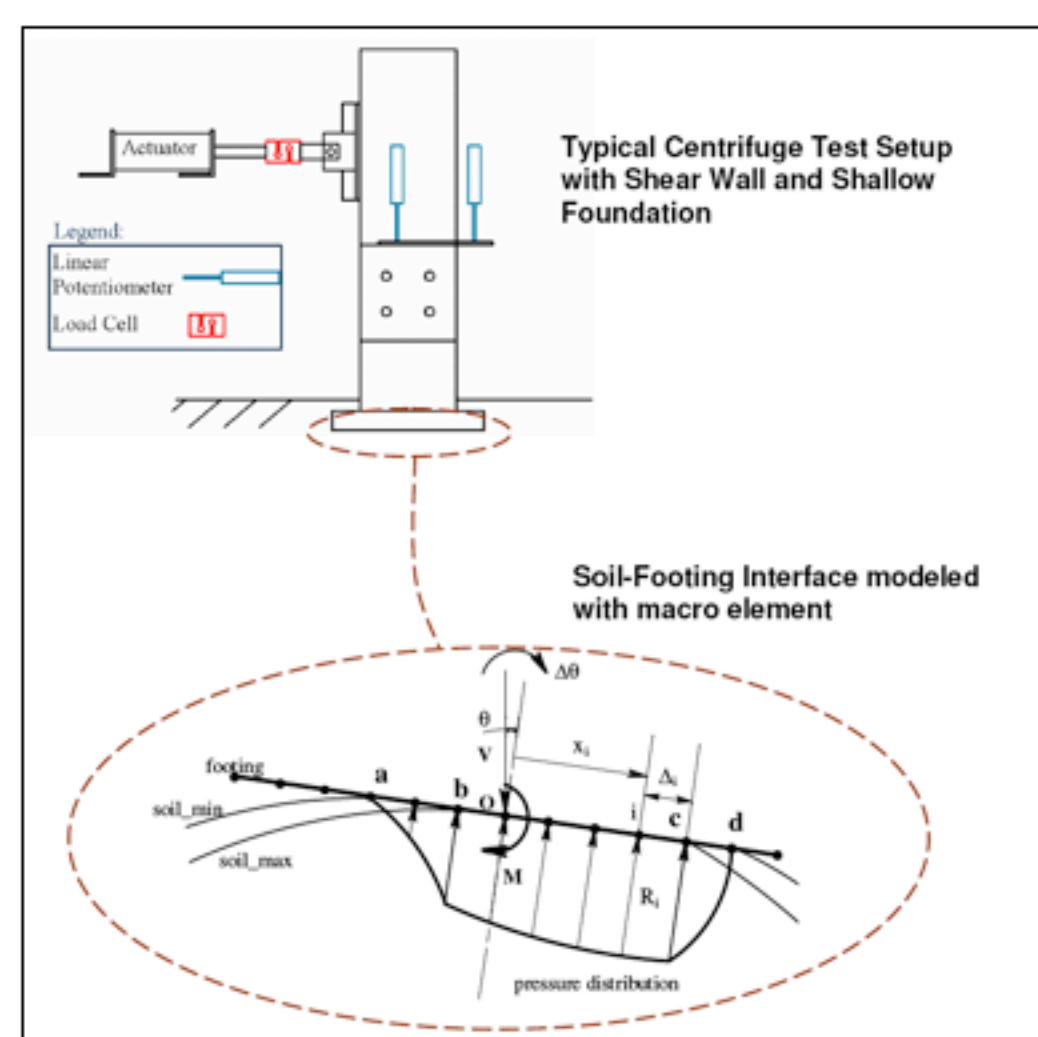


Research

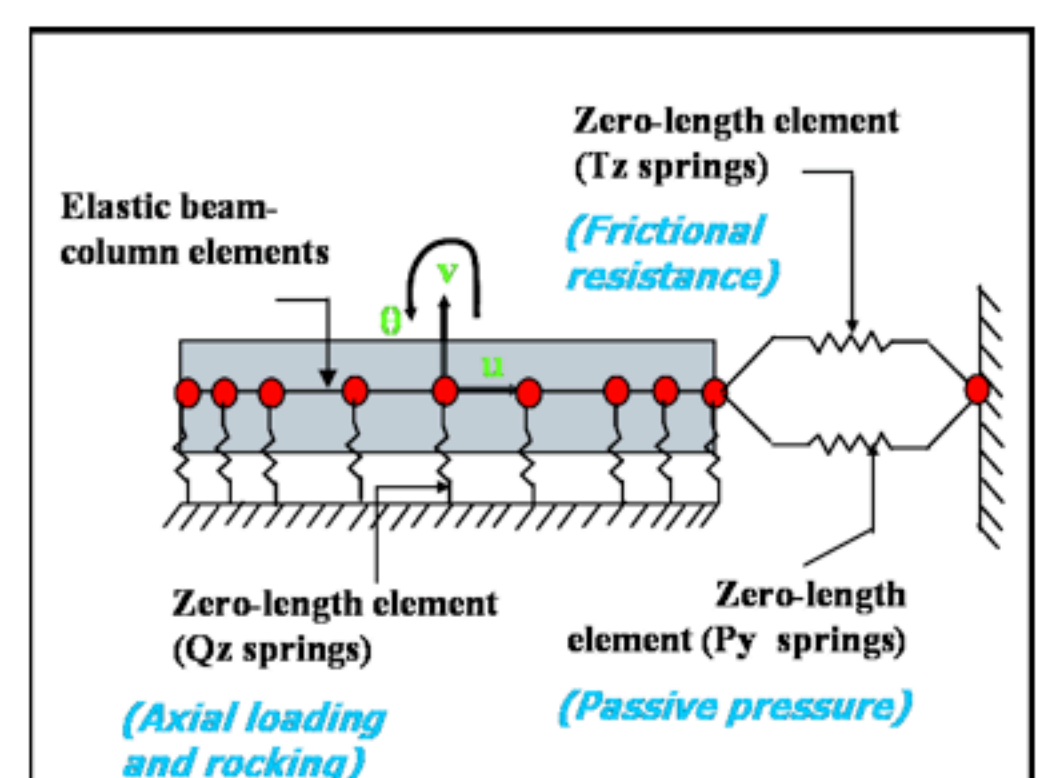


*Experiments & evaluations of field performance data provide insight into physical mechanisms and contribute to model development.
See PEER Reports, Digests, and Online Databases.*

Models

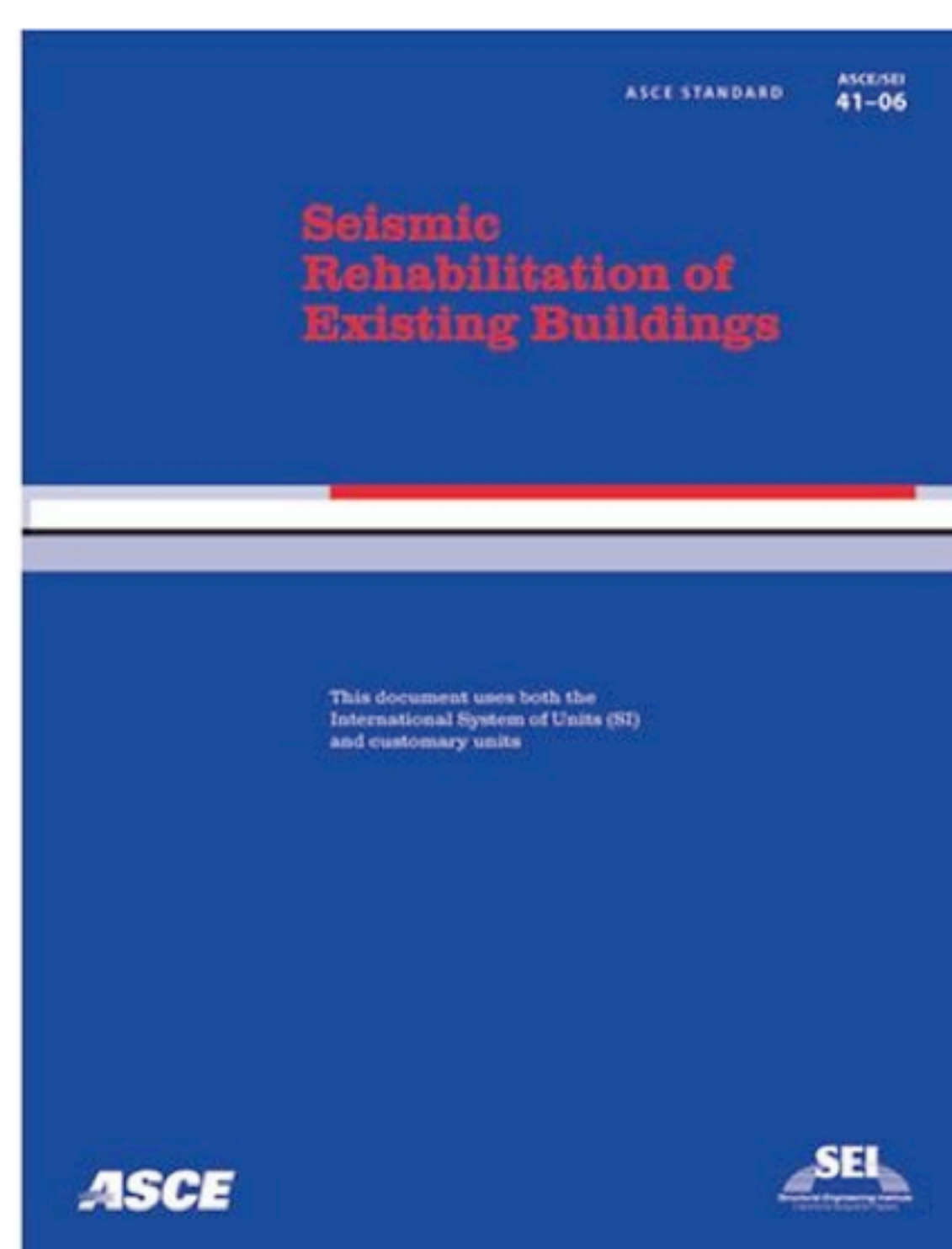


*Improved SFSI models allow for more reliable simulations of structural & foundation performance.
See OpenSees.*



BNWF schematic

Design Guidelines



*Contributions to SFSI provisions in ATC55, FEMA440, ASCE41, and NEHRP Provisions for New Buildings
See PEER and EERI web sites and PEER Research Digests.*

The Pacific Earthquake Engineering Research Center
headquarters at the University of California, Berkeley
for more information see <http://peer.berkeley.edu>

Poster by J. Stewart and S. Tileylioglu (UCLA); contributions from B. Kutter and J. Ugalde (UC Davis) and T. Hutchinson and P. Raychowdhury (UC San Diego)

