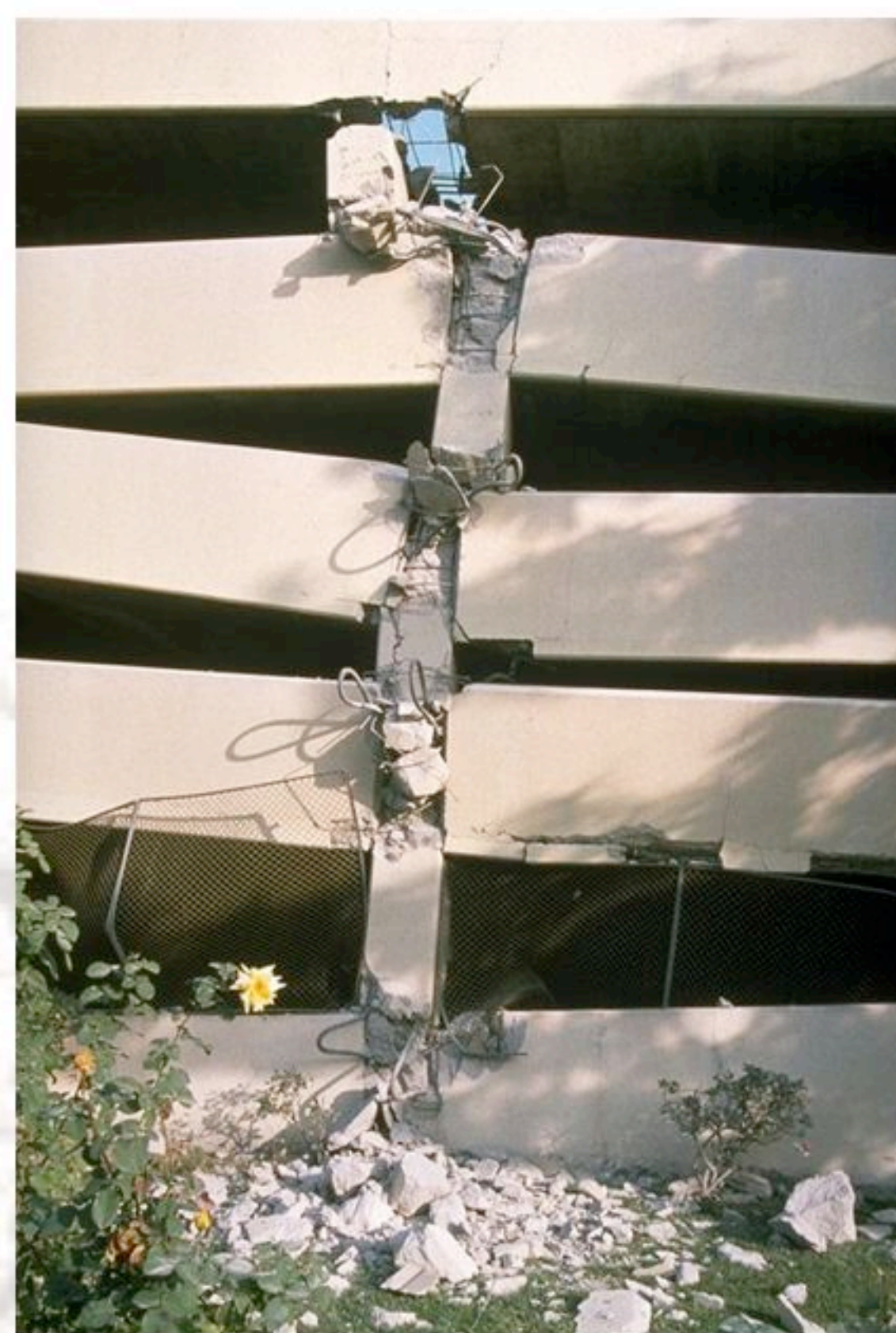


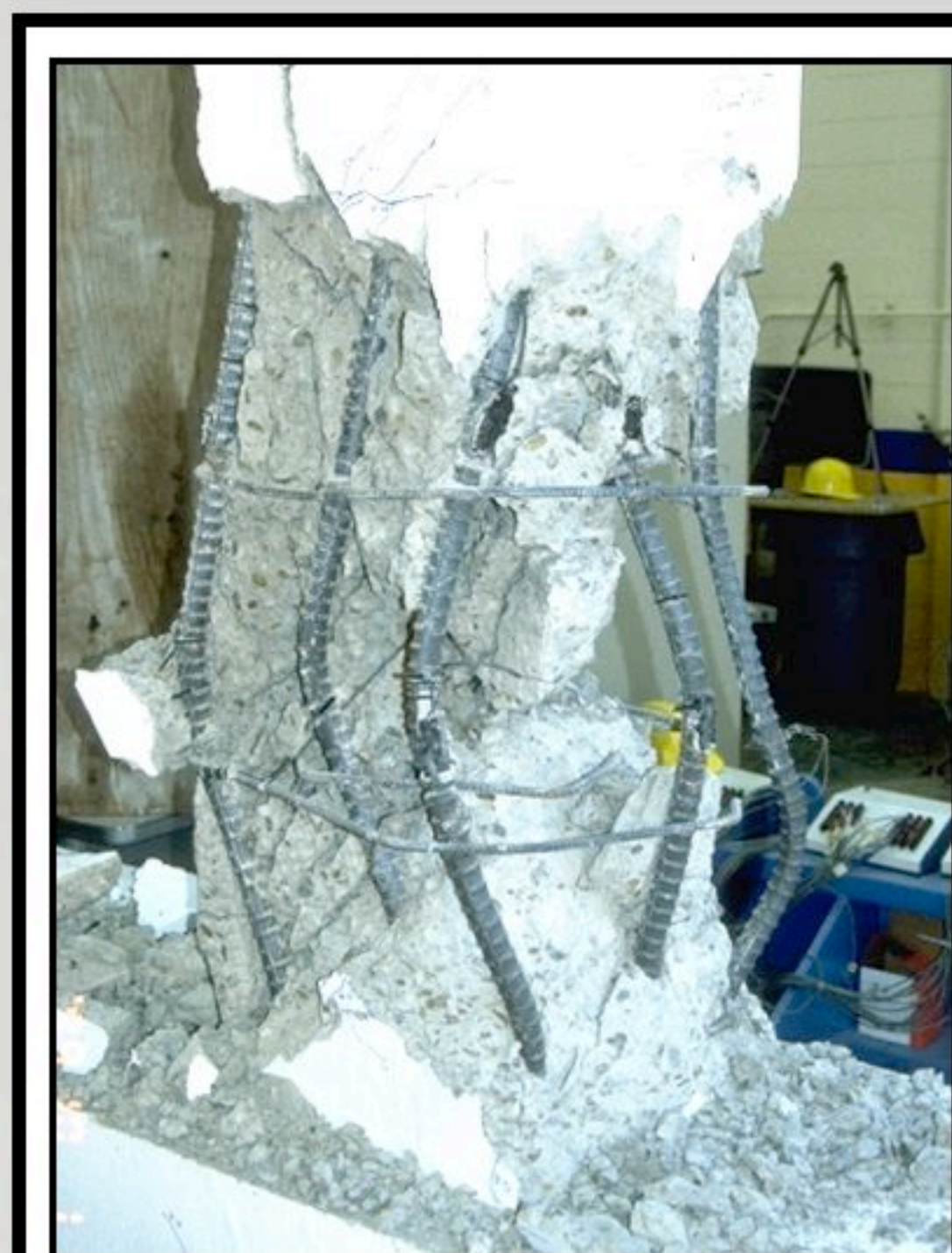
Older Nonductile Concrete Buildings



"In the next major quake, the largest number of casualties will occur in older concrete buildings."

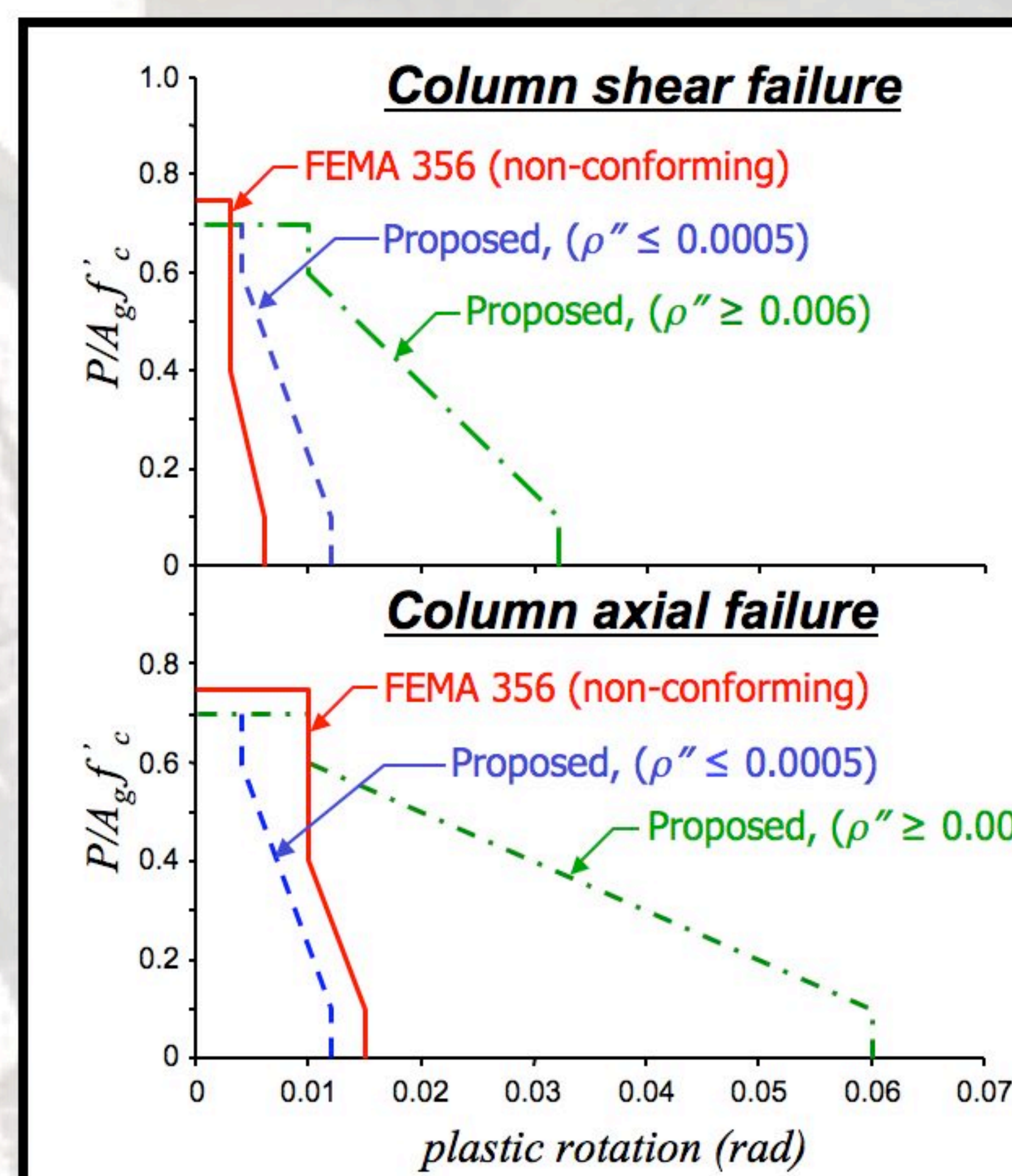
2006 San Francisco Earthquake Scenario
Charles Kircher

PEER is contributing to the solution through...



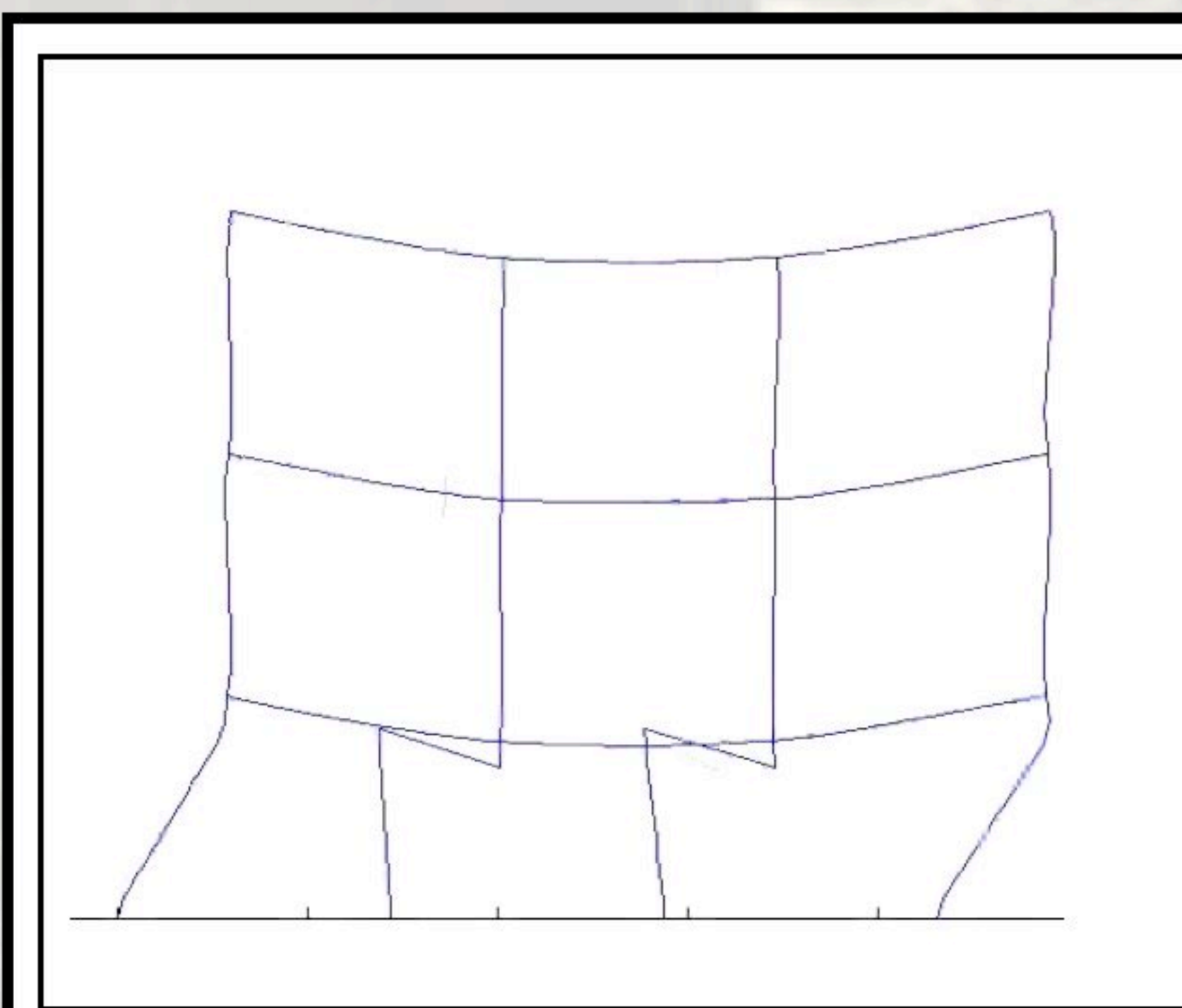
Research

Experimental and analytical studies produce data for development of models. See PEER Reports, Digests, and Online Databases.



Models

Improved models and acceptance criteria can save millions of dollars in retrofitting costs. See ASCE/SEI 41 Supplement 1.



Simulation

Improved simulation capabilities help identify the truly vulnerable buildings from within the large building stock. See OpenSees. berkeley.edu.



Concrete Coalition

Advocacy

EERI, PEER, and others are collaborating on an initiative to promote risk reduction in older concrete buildings. See Concrete Coalition web site.

The Pacific Earthquake Engineering Research Center

headquarters at the University of California, Berkeley
for more information see <http://peer.berkeley.edu>

