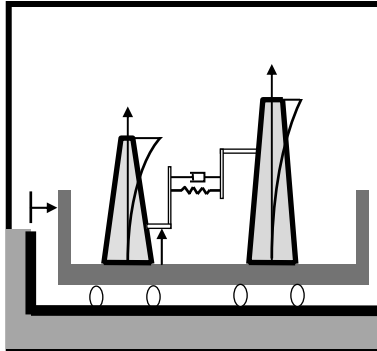


Seismic Performance of Electric Utility Components and Systems



Experimental and Analytical Studies on Interactions of Substation Equipment



Advanced Building Assessment Guidelines

- PEER researchers developed advanced, yet practical, guidelines for seismic assessment of utility buildings
- The guidelines are used by a major utility for seismic evaluation of existing buildings

Experimental Studies on Seismic Performance of Electric Equipment



- Numerous shake table tests of electric equipment ranging from 500kv switches to transformers
- Development of standard shake table input motions, adopted by IEEE 693 Standard

