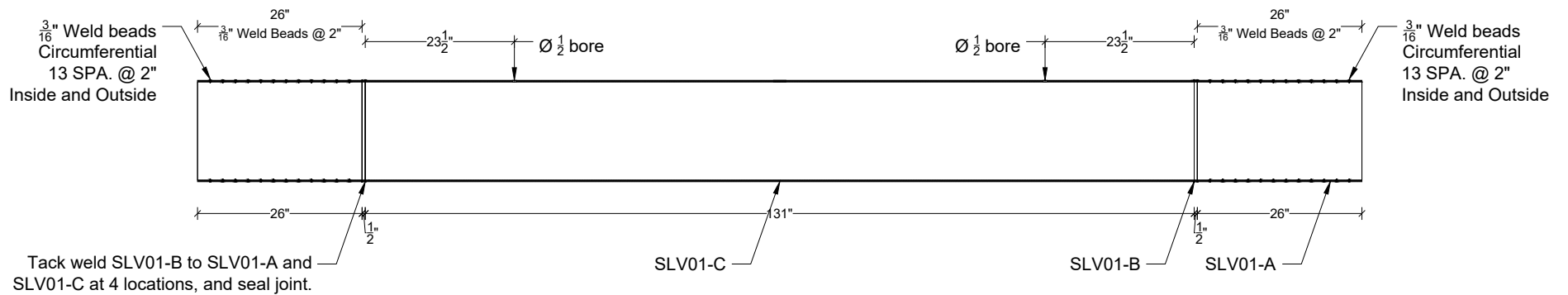


Revisions	
07-20-2017	Modify SLV01-B and SLV01-C length
07-20-2017	Modify SLV01-B production method
07-20-2017	Change debonding method in PT Anchor, ANCH01
07-20-2017	Added \emptyset bore to SLV01-C for instrumentation

PEER Resilient Bridge Column Test

Pre-cast column



IMPORTANT: Tack welds on SLV01-B to allow for removal before testing



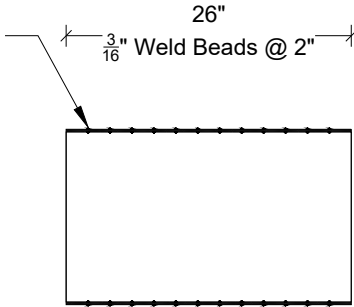
Revisions	
07-20-2017	Modify SLV01-B and SLV01-C length
07-20-2017	Modify SLV01-B production method
07-20-2017	Change debonding method in PT Anchor, ANCH01
07-20-2017	Added Ø 1/2" bore to SLV01-C for instrumentation

PEER Resilient Bridge Column Test

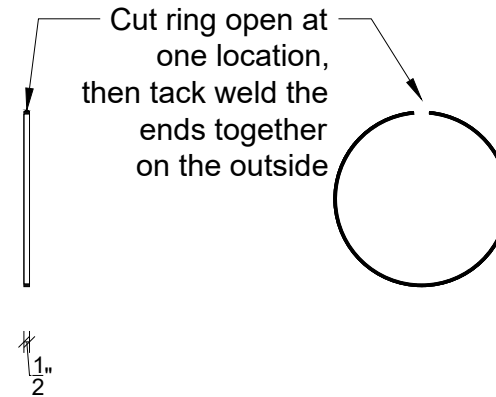
Pre-cast column: SLV01 Assembly

**Sheet
2 of 5**

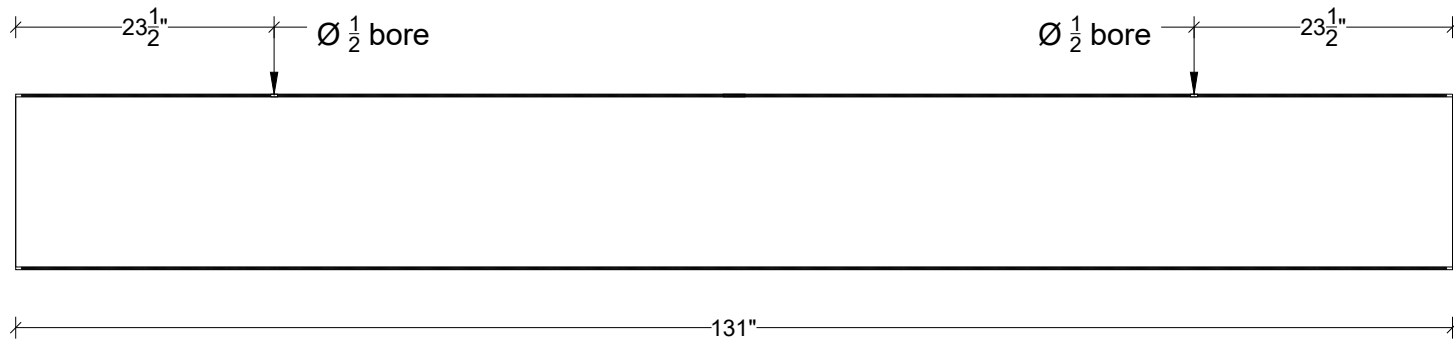
$\frac{3}{16}$ " Weld beads
Circumferential
13 SPA. @ 2"
Inside and Outside



SLV01-A: 2 Count



SLV01-B : 2 Count
Cut $\frac{1}{2}$ " ring at one location,
then tack weld to form easy
to remove strip



SLV01-C

Revisions	
07-20-2017	Modify SLV01-B and SLV01-C length
07-20-2017	Modify SLV01-B production method
07-20-2017	Change debonding method in PT Anchor, ANCH01
07-20-2017	Added $\emptyset \frac{1}{2}$ bore to SLV01-C for instrumentation

Reinforcing Schedule

Mark	Quantity		Description
	PC	Total	
4B01	10	42	#4 ASTM A706 Grade 60 184" long straight bar Two (2) extra for material testing
ANCH01	1	4	Anchorage assembly for $\varnothing 1\frac{3}{8}$ " ASTM A722 PT bar
2S01	2	8	0.25" Pencil Rod $\varnothing=14\frac{1}{4}$ " , pitch=4" , 6 turns + Two closing turns at each end Wire length=38' (PC) / 152' (Total)
2S02	1	4	0.25" Pencil Rod $\varnothing=14\frac{1}{4}$ " , pitch=4" , 32 turns + Two closing turns at each end Wire length=135' (PC) / 540' (Total)
SLV01	1	4	$\frac{1}{4}$ " thick steel pipe, 184" length, O.D.=16" <u>See detail, Sheets 2 & 3</u>

Bill of Materials

Mark	Quantity		Description
	PC	Total	
SLV03	1	4	158" long , 2" ID PVC for debonding $\varnothing 1\frac{3}{8}$ " PT bar

Concrete Specifications

Mix Design	Unit Weight (P.C.F)	Volume (CU.YD.)	f'_c (P.S.I.)
-	150	1.0	6000

No. Required: 4

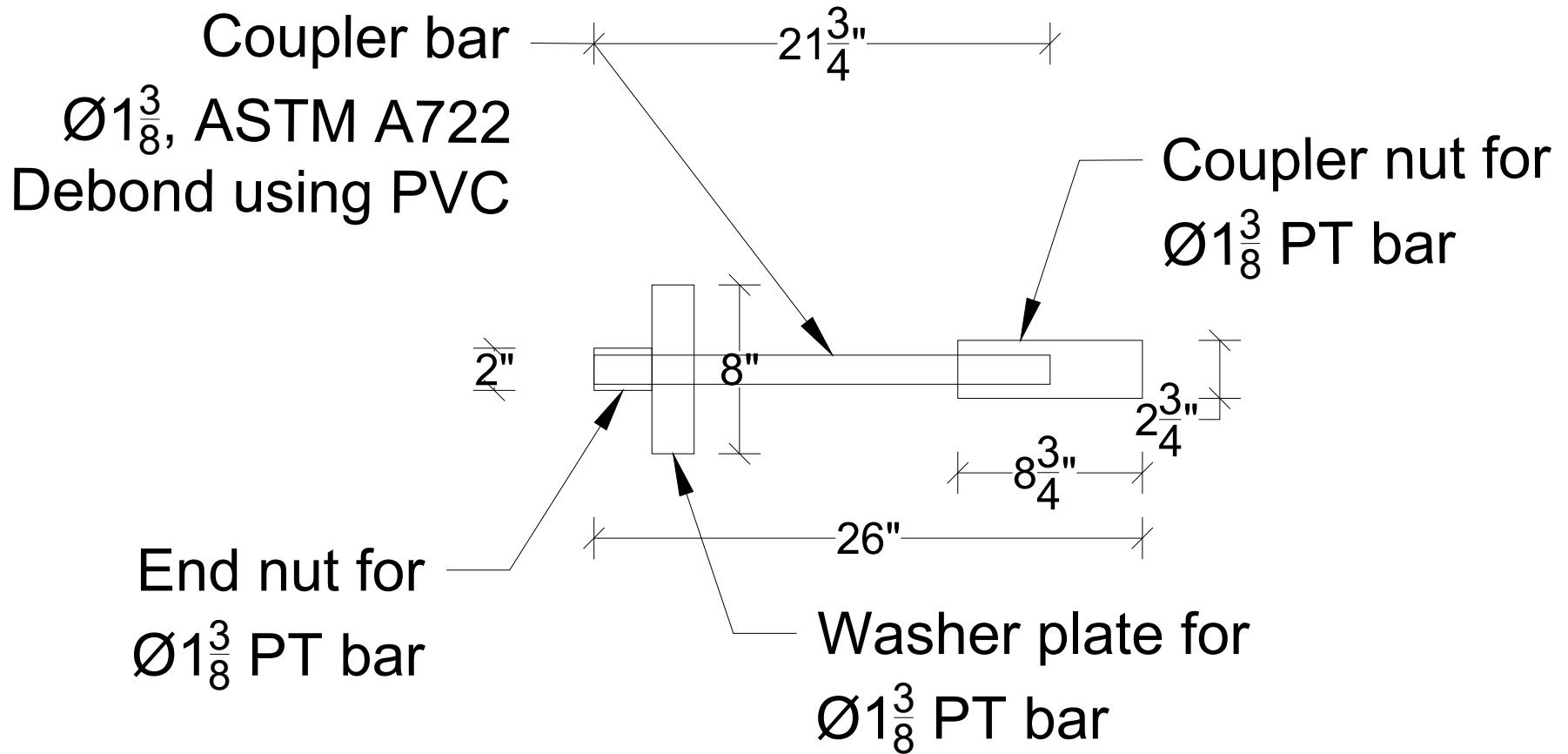
PEER Resilient Bridge Column Test

Pre-cast column: Bill of Materials

Sheet
4 of 5

Revisions

07-20-2017	Modify SLV01-B and SLV01-C length
07-20-2017	Modify SLV01-B production method
07-20-2017	Change debonding method in PT Anchor, ANCH01
07-20-2017	Added $\varnothing \frac{1}{2}$ bore to SLV01-C for instrumentation



Revisions	
07-20-2017	Modify SLV01-B and SLV01-C length
07-20-2017	Modify SLV01-B production method
07-20-2017	Change debonding method in PT Anchor, ANCH01
07-20-2017	Added Ø bore to SLV01-C for instrumentation