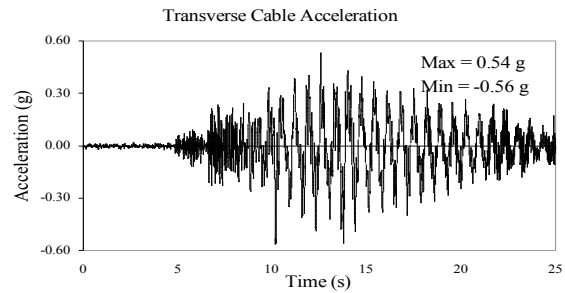
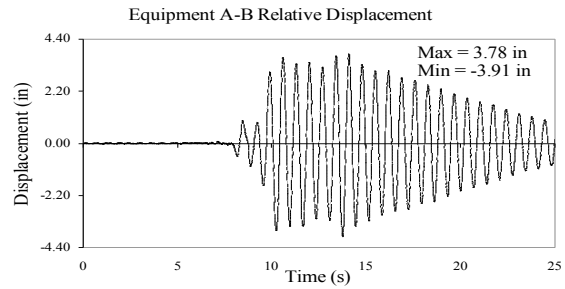
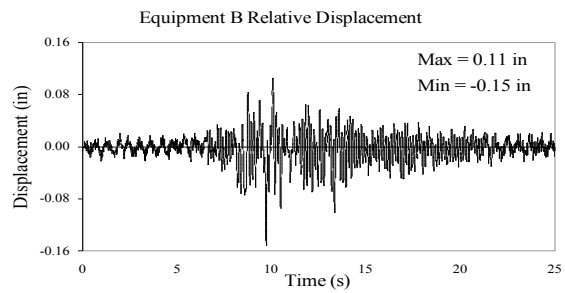
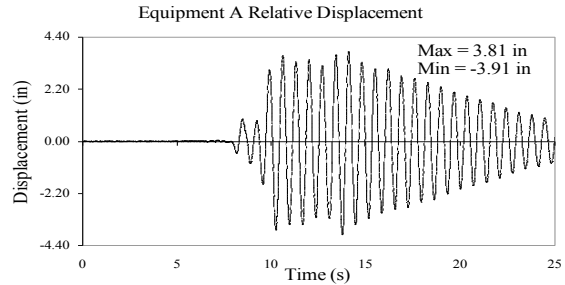
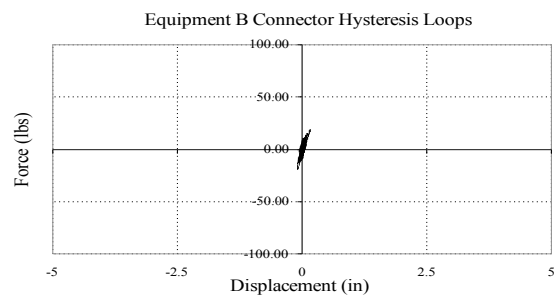
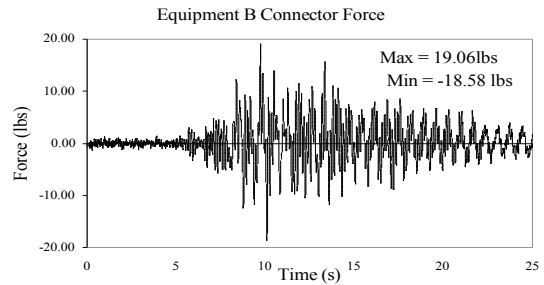


APPENDIX E
RESULTS OF SEISMIC TESTS

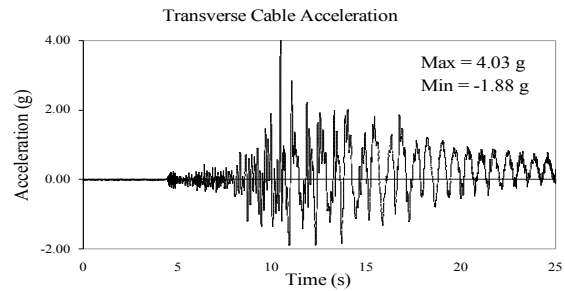
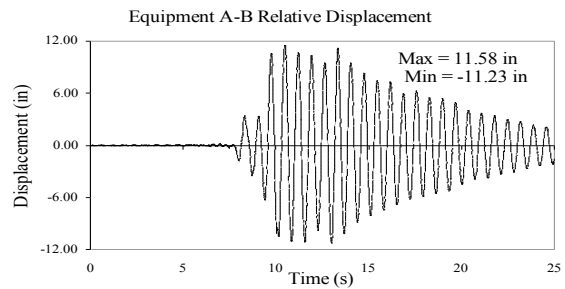
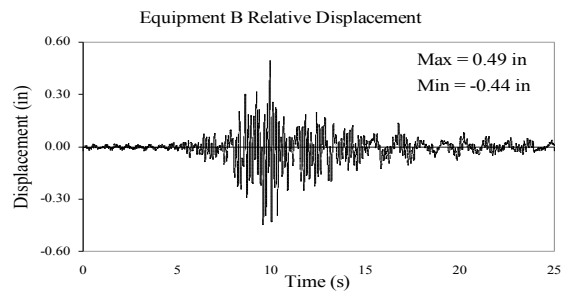
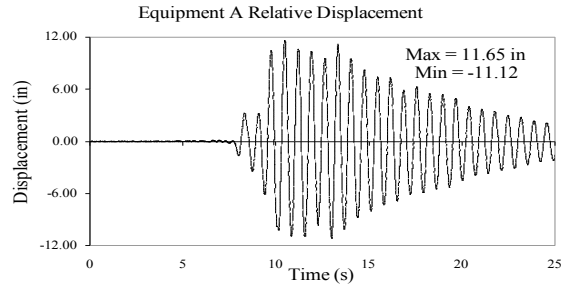
TEST FB-6
EQUIPMENT COMBINATION 4, 1113 MCM, 10% SLACKNESS
NEWHALL GROUND MOTION, 30% SPAN
ACCELERATIONS AND DISPLACEMENTS



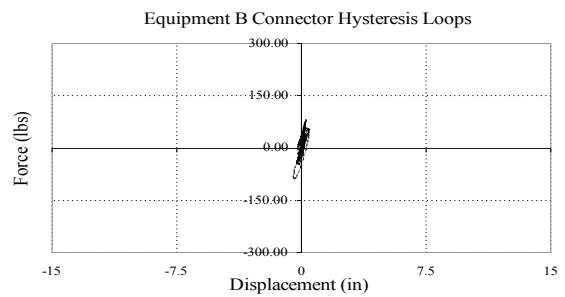
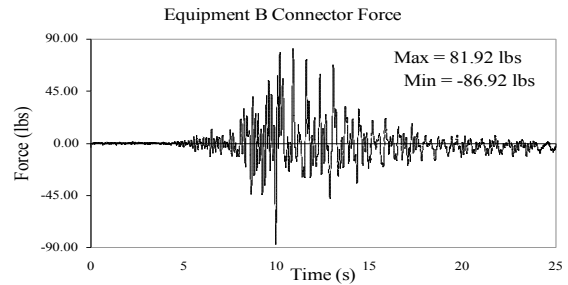
TEST FB-6
EQUIPMENT COMBINATION 4, 1113 MCM, 10% SLACKNESS
NEWHALL GROUND MOTION, 30% SPAN
CABLE LONGITUDINAL FORCES



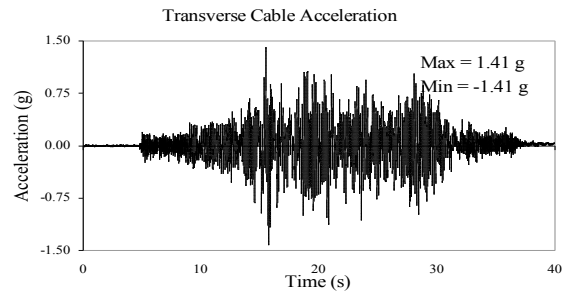
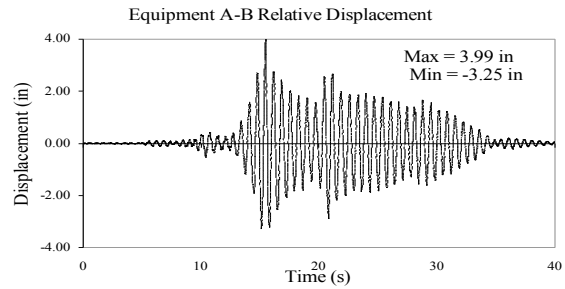
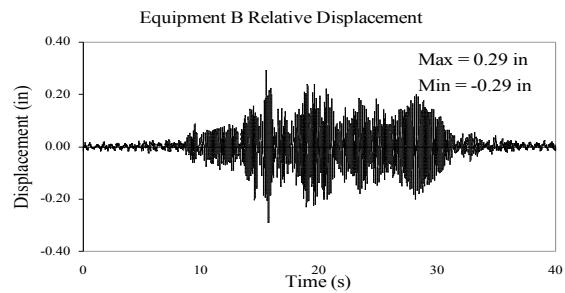
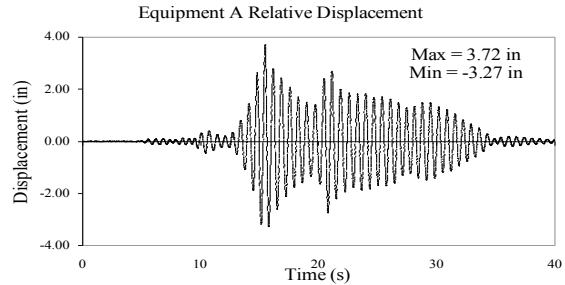
TEST FB-7
EQUIPMENT COMBINATION 4, 1113 MCM, 10% SLACKNESS
NEWHALL GROUND MOTION, 100% SPAN
ACCELERATIONS AND DISPLACEMENTS



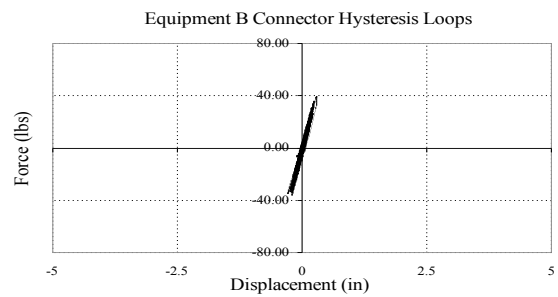
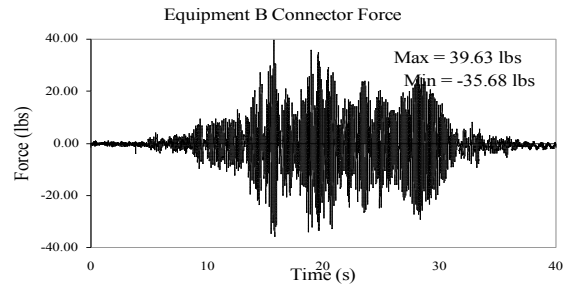
TEST FB-7
EQUIPMENT COMBINATION 4, 1113 MCM, 10% SLACKNESS
NEWHALL GROUND MOTION, 100% SPAN
CABLE LONGITUDINAL FORCES



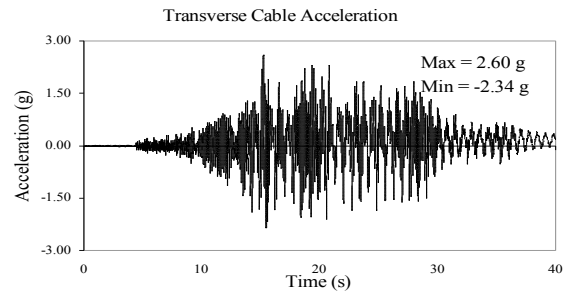
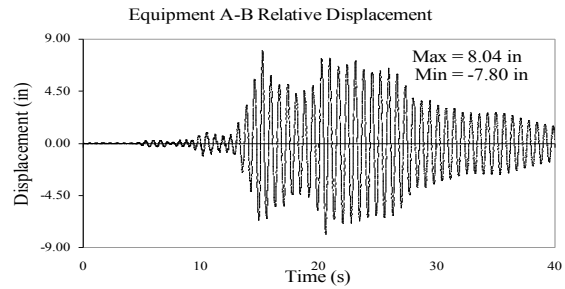
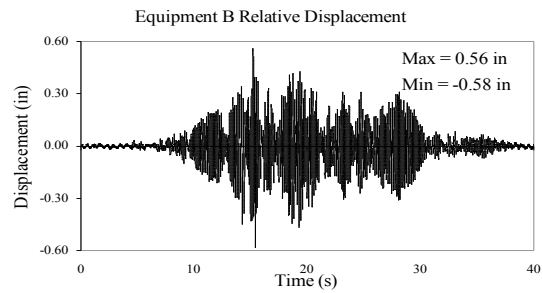
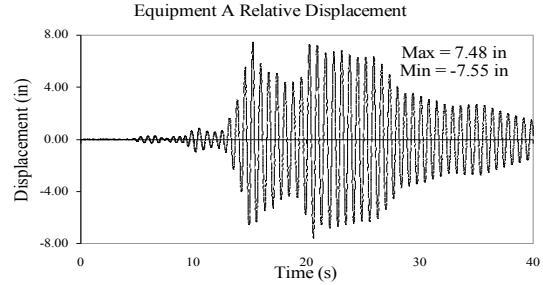
TEST FB-8
EQUIPMENT COMBINATION 4, 1113 MCM, 10% SLACKNESS
TABAS GROUND MOTION, 25% SPAN
ACCELERATIONS AND DISPLACEMENTS



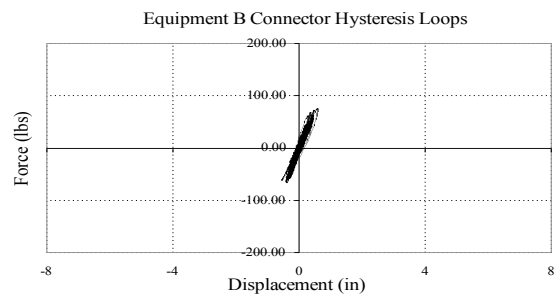
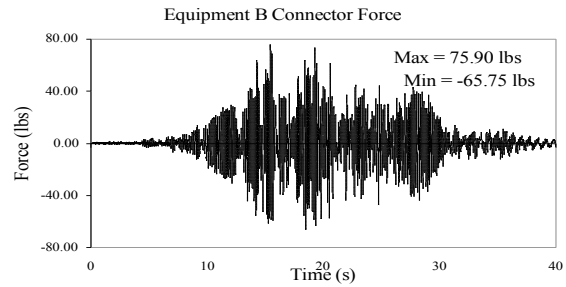
TEST FB-8
EQUIPMENT COMBINATION 4, 1113 MCM, 10% SLACKNESS
TABAS GROUND MOTION, 25% SPAN
CABLE LONGITUDINAL FORCES



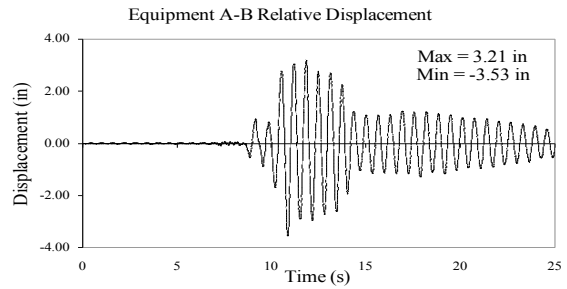
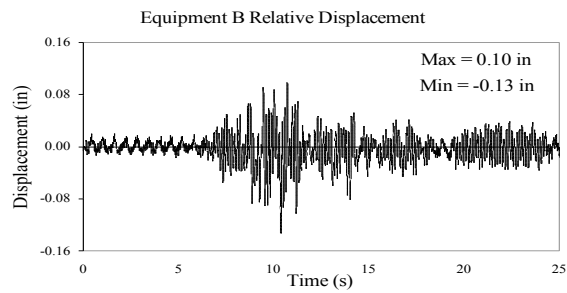
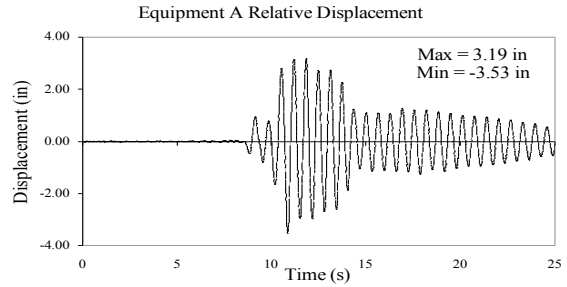
TEST FB-9
EQUIPMENT COMBINATION 4, 1113 MCM, 10% SLACKNESS
TABAS GROUND MOTION, 50% SPAN
ACCELERATIONS AND DISPLACEMENTS



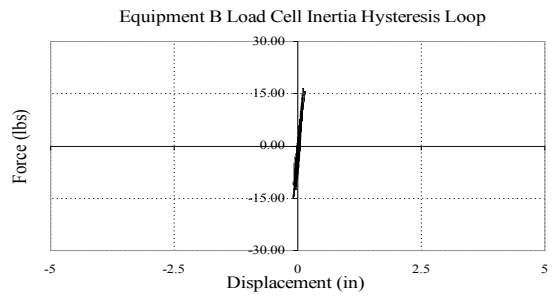
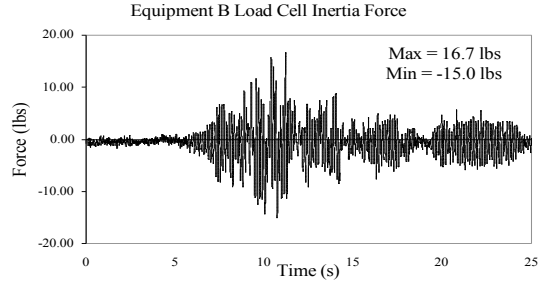
TEST FB-9
EQUIPMENT COMBINATION 4, 1113 MCM, 10% SLACKNESS
TABAS GROUND MOTION, 50% SPAN
CABLE LONGITUDINAL FORCES



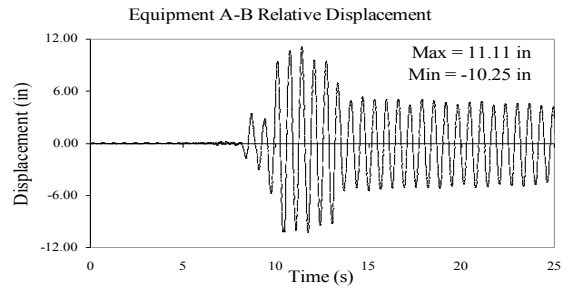
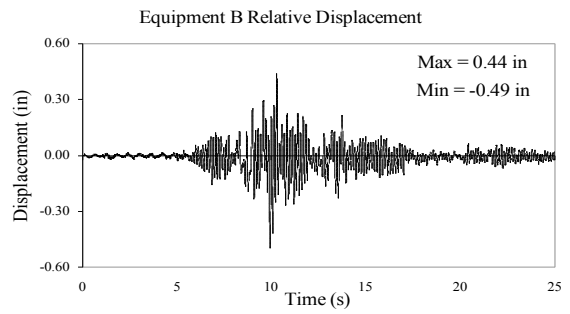
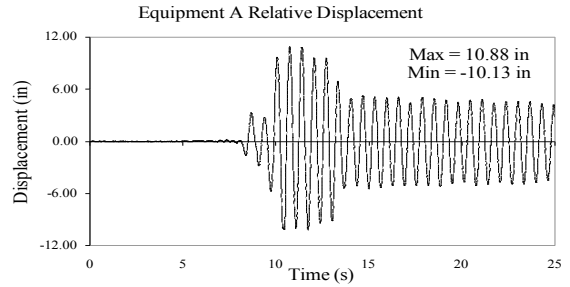
TEST FB-10
EQUIPMENT COMBINATION 4, UNCOUPLED
NEWHALL GROUND MOTION, 30% SPAN
ACCELERATIONS AND DISPLACEMENTS



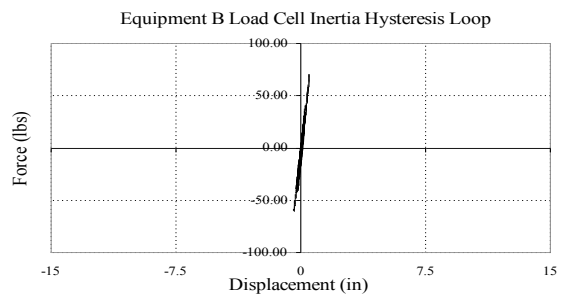
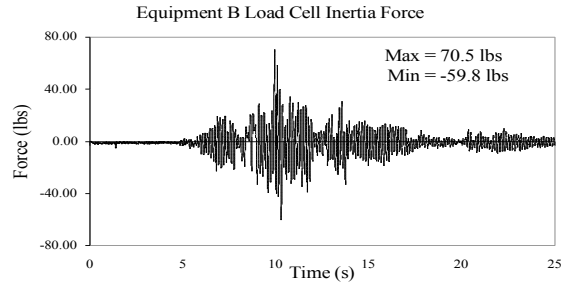
TEST FB-10
EQUIPMENT COMBINATION 4, UNCOUPLED
NEWHALL GROUND MOTION, 30% SPAN
CABLE LONGITUDINAL FORCES



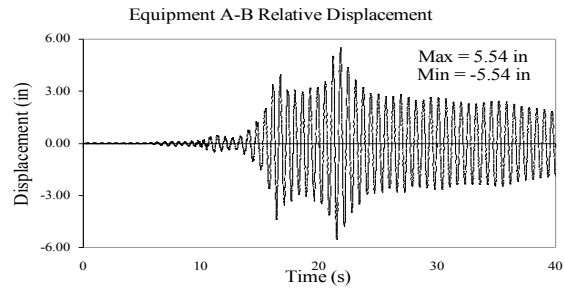
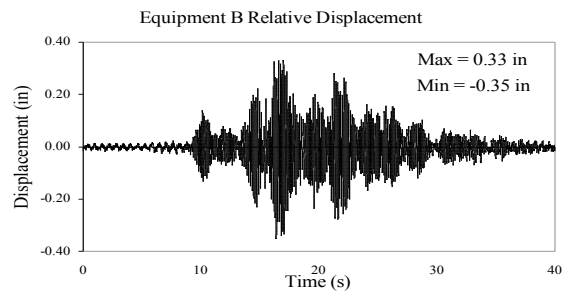
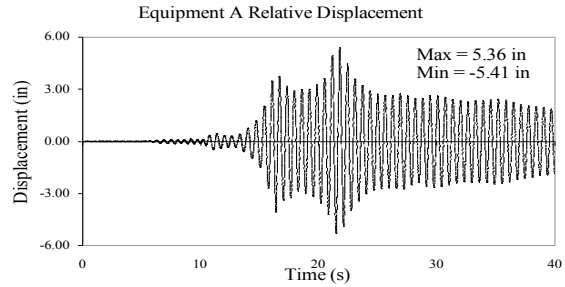
TEST FB-11
EQUIPMENT COMBINATION 4, UNCOUPLED
NEWHALL GROUND MOTION, 100% SPAN
ACCELERATIONS AND DISPLACEMENTS



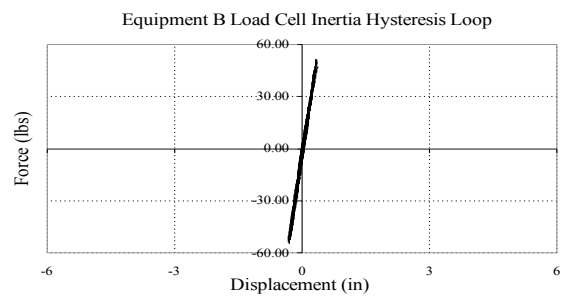
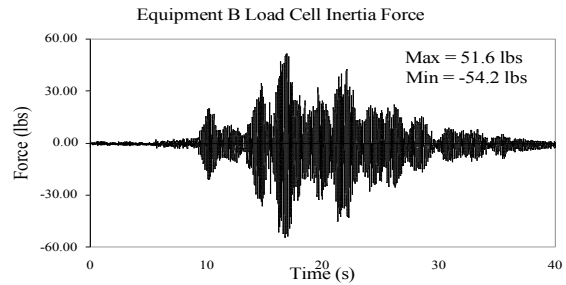
TEST FB-11
EQUIPMENT COMBINATION 4, UNCOUPLED
NEWHALL GROUND MOTION, 100% SPAN
CABLE LONGITUDINAL FORCES



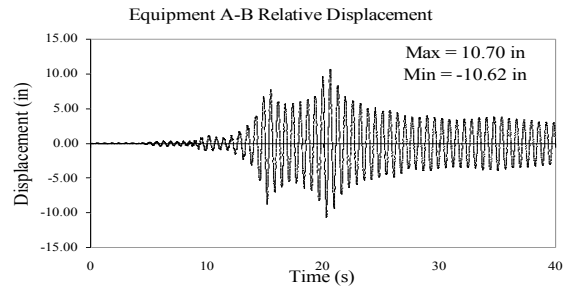
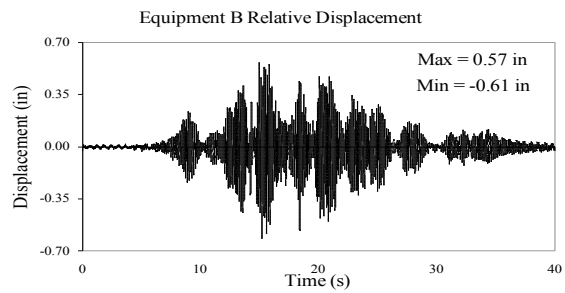
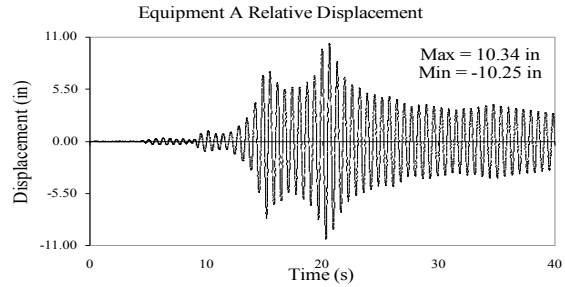
TEST FB-12
EQUIPMENT COMBINATION 4, UNCOUPLED
TABAS GROUND MOTION, 25% SPAN
ACCELERATIONS AND DISPLACEMENTS



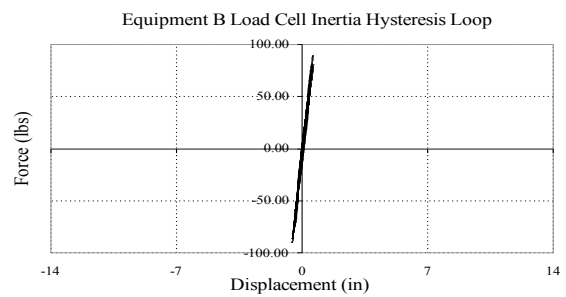
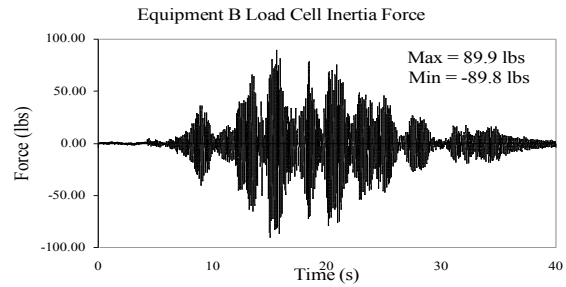
TEST FB-12
EQUIPMENT COMBINATION 4, UNCOUPLED
TABAS GROUND MOTION, 25% SPAN
CABLE LONGITUDINAL FORCES



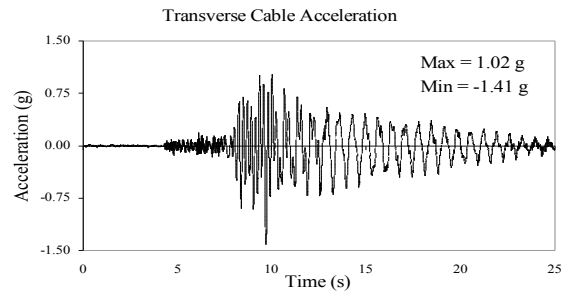
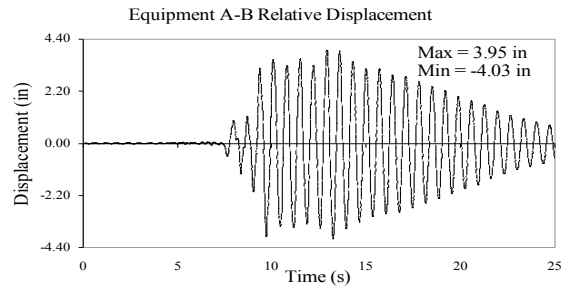
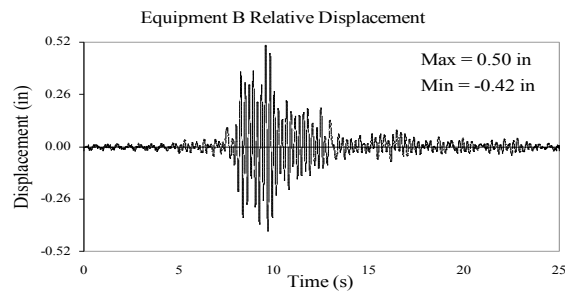
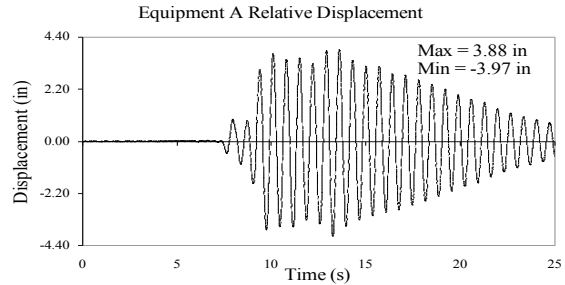
TEST FB-13
EQUIPMENT COMBINATION 4, UNCOUPLED
TABAS GROUND MOTION, 50% SPAN
ACCELERATIONS AND DISPLACEMENTS



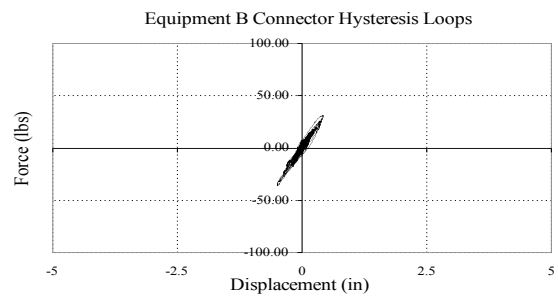
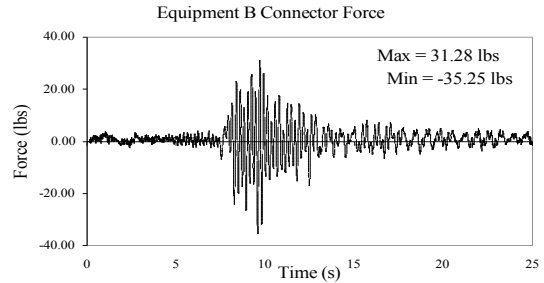
TEST FB-13
EQUIPMENT COMBINATION 4, UNCOUPLED
TABAS GROUND MOTION, 50% SPAN
CABLE LONGITUDINAL FORCES



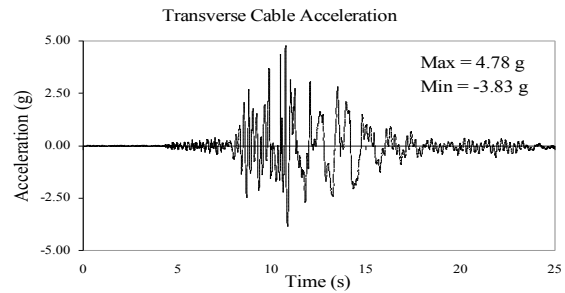
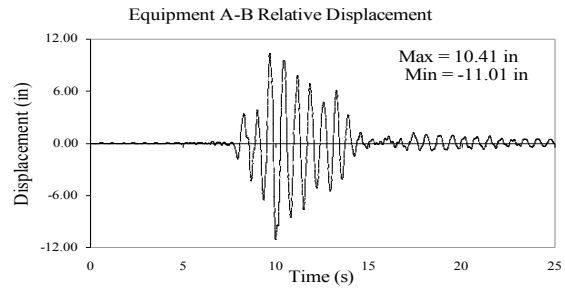
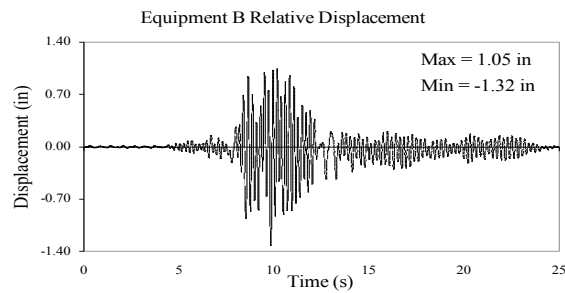
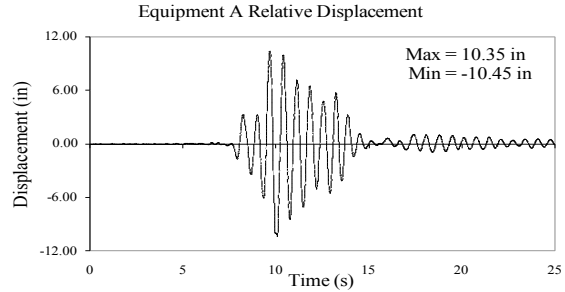
TEST FB-18
EQUIPMENT COMBINATION 3, 1113 MCM, 10% SLACKNESS
NEWHALL GROUND MOTION, 30% SPAN
ACCELERATIONS AND DISPLACEMENTS



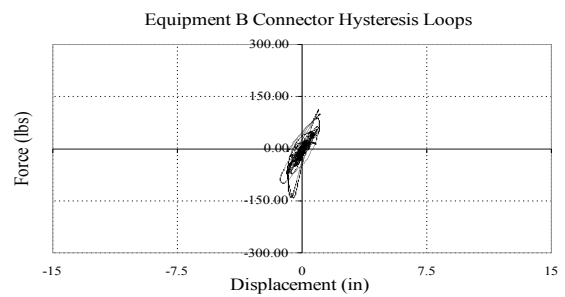
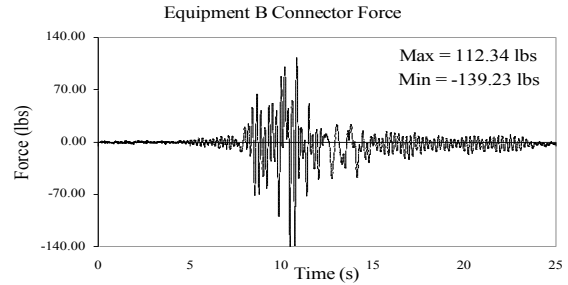
TEST FB-18
EQUIPMENT COMBINATION 3, 1113 MCM, 10% SLACKNESS
NEWHALL GROUND MOTION, 30% SPAN
CABLE LONGITUDINAL FORCES



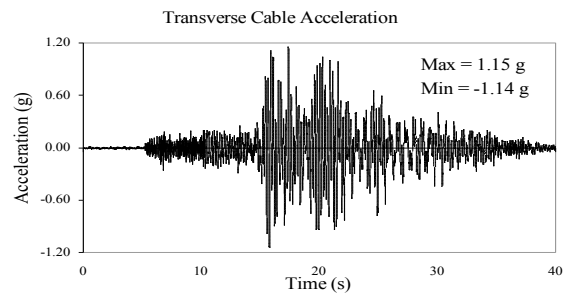
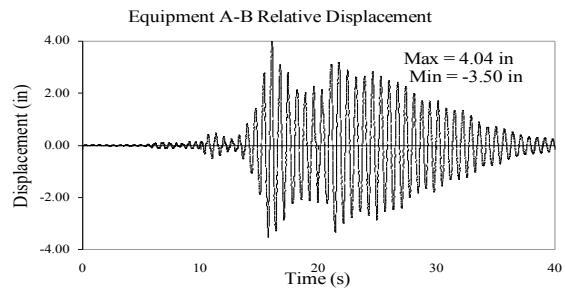
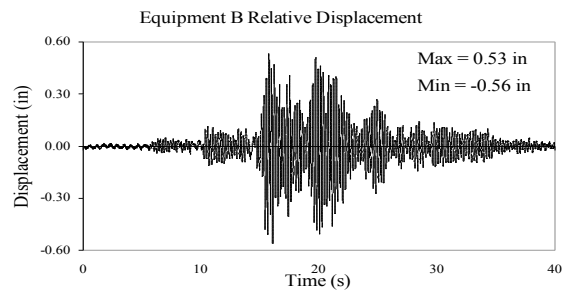
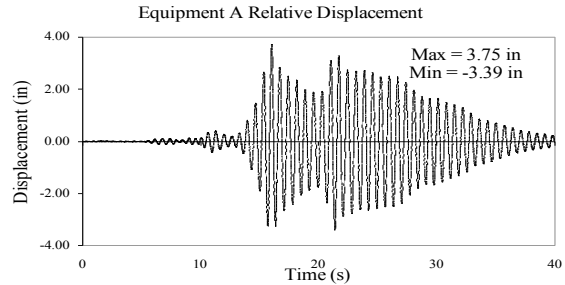
TEST FB-19
EQUIPMENT COMBINATION 3, 1113 MCM, 10% SLACKNESS
NEWHALL GROUND MOTION, 100% SPAN
ACCELERATIONS AND DISPLACEMENTS



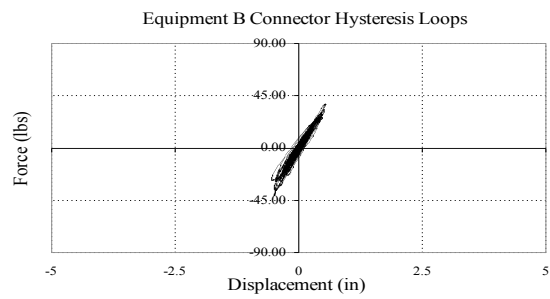
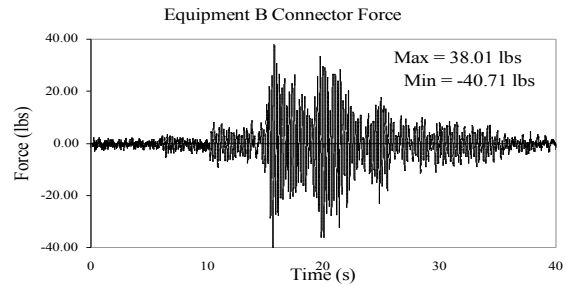
TEST FB-19
EQUIPMENT COMBINATION 3, 1113 MCM, 10% SLACKNESS
NEWHALL GROUND MOTION, 100% SPAN
CABLE LONGITUDINAL FORCES



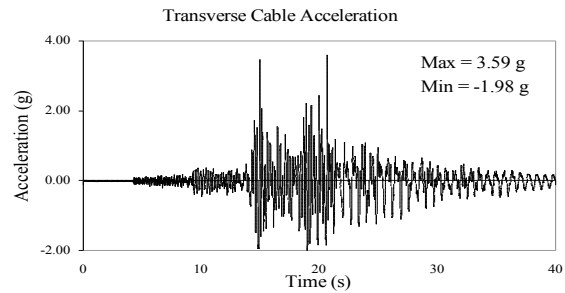
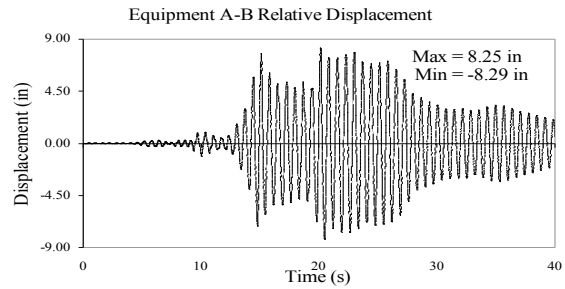
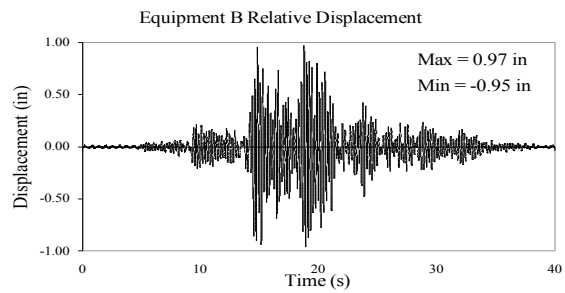
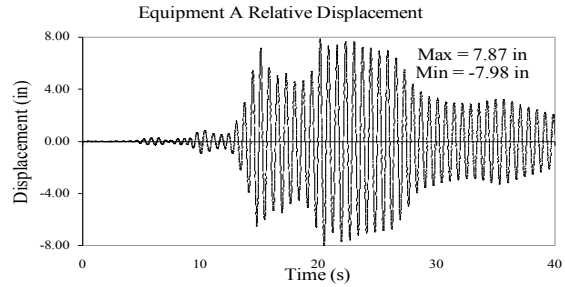
TEST FB-20
EQUIPMENT COMBINATION 3, 1113 MCM, 10% SLACKNESS
TABAS GROUND MOTION, 25% SPAN
ACCELERATIONS AND DISPLACEMENTS



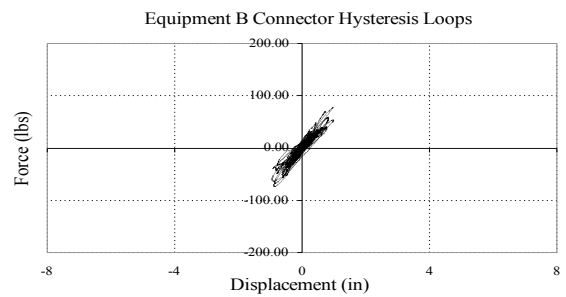
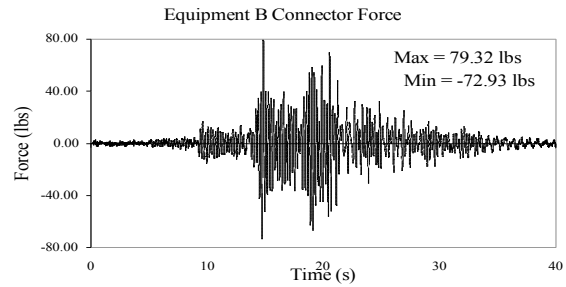
TEST FB-20
EQUIPMENT COMBINATION 3, 1113 MCM, 10% SLACKNESS
TABAS GROUND MOTION, 25% SPAN
CABLE LONGITUDINAL FORCES



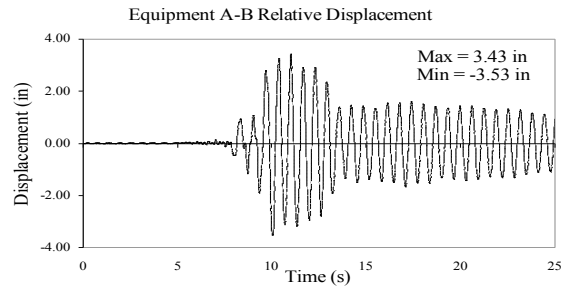
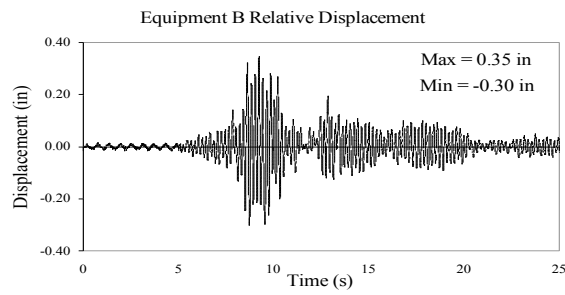
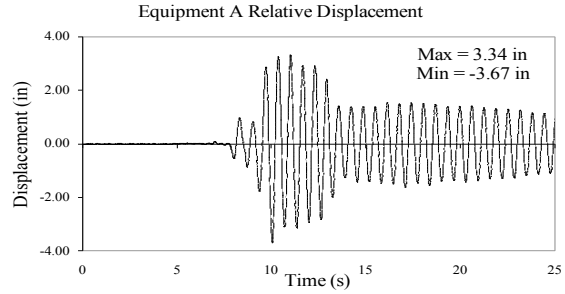
TEST FB-21
EQUIPMENT COMBINATION 3, 1113 MCM, 10% SLACKNESS
TABAS GROUND MOTION, 50% SPAN
ACCELERATIONS AND DISPLACEMENTS



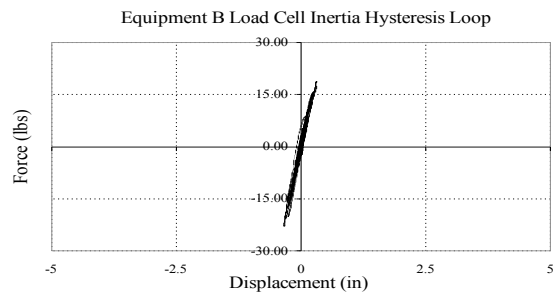
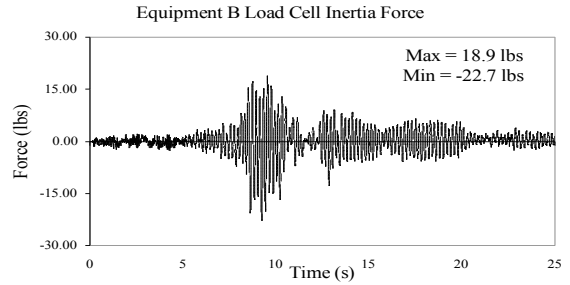
TEST FB-21
EQUIPMENT COMBINATION 3, 1113 MCM, 10% SLACKNESS
TABAS GROUND MOTION, 50% SPAN
CABLE LONGITUDINAL FORCES



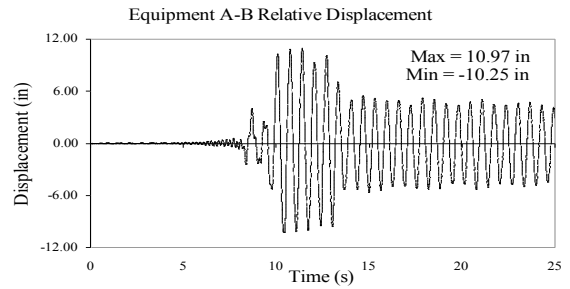
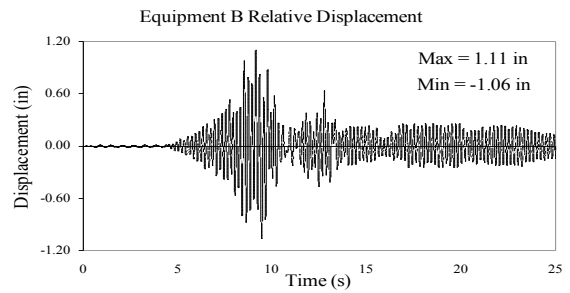
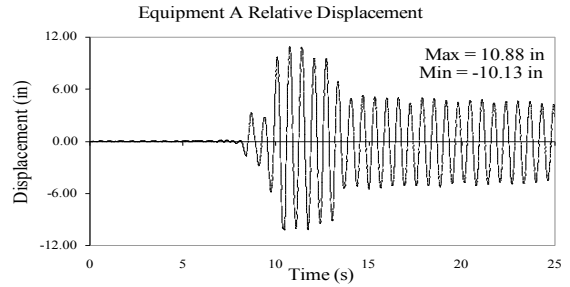
TEST FB-22
EQUIPMENT COMBINATION 3, UNCOUPLED
NEWHALL GROUND MOTION, 30% SPAN
ACCELERATIONS AND DISPLACEMENTS



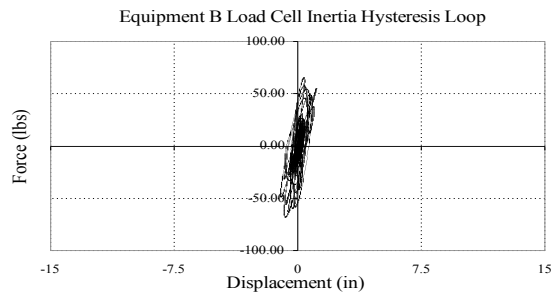
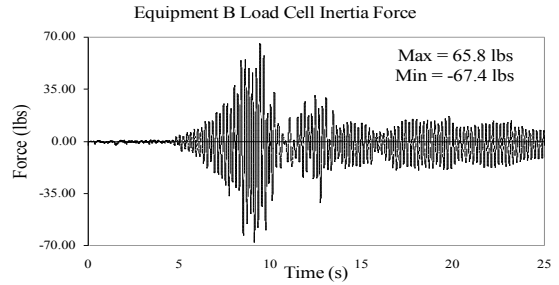
TEST FB-22
EQUIPMENT COMBINATION 3, UNCOUPLED
NEWHALL GROUND MOTION, 30% SPAN
CABLE LONGITUDINAL FORCES



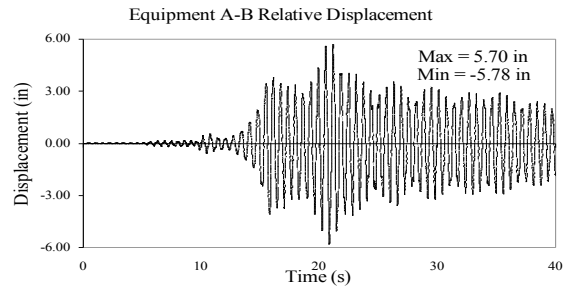
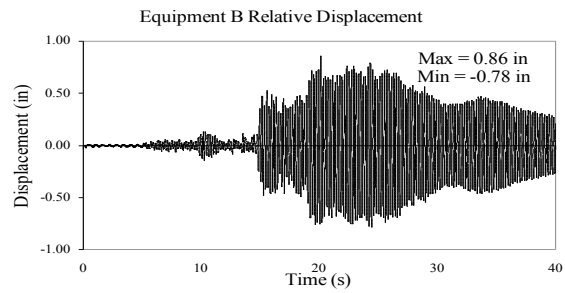
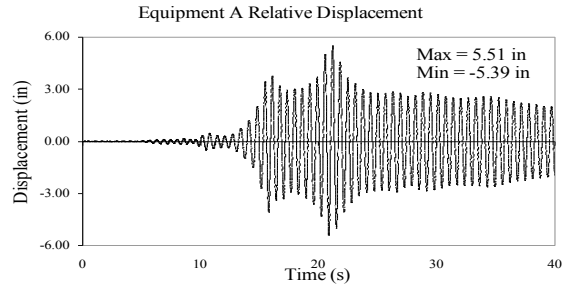
TEST FB-23
EQUIPMENT COMBINATION 3, UNCOUPLED
NEWHALL GROUND MOTION, 100% SPAN
ACCELERATIONS AND DISPLACEMENTS



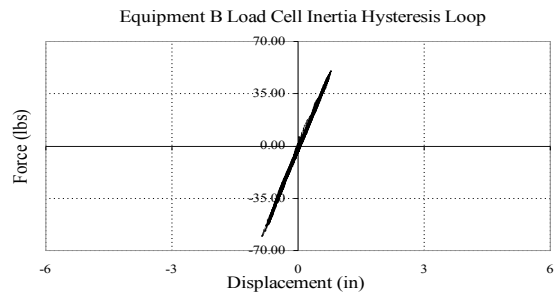
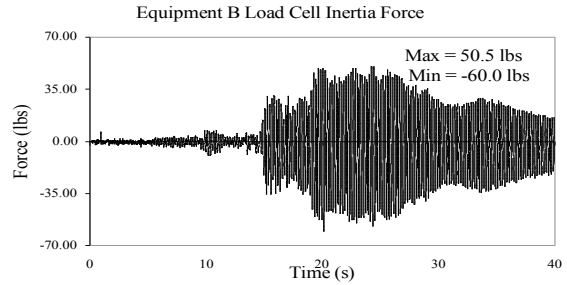
TEST FB-23
EQUIPMENT COMBINATION 3, UNCOUPLED
NEWHALL GROUND MOTION, 100% SPAN
CABLE LONGITUDINAL FORCES



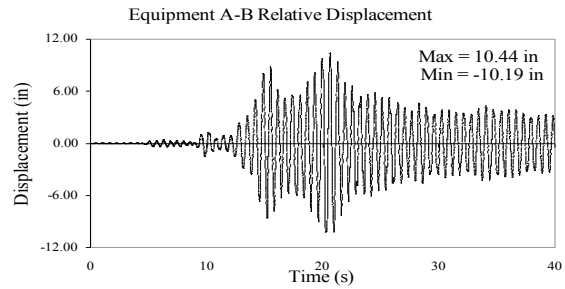
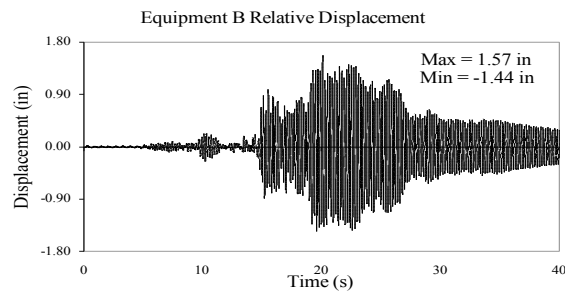
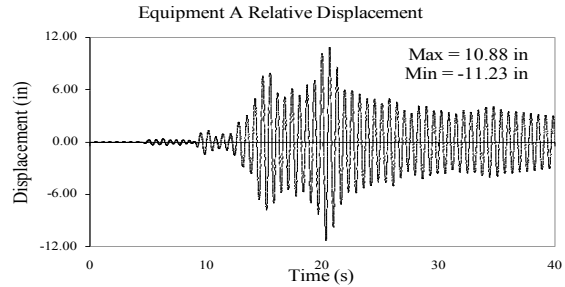
TEST FB-24
EQUIPMENT COMBINATION 3, UNCOUPLED
TABAS GROUND MOTION, 25% SPAN
ACCELERATIONS AND DISPLACEMENTS



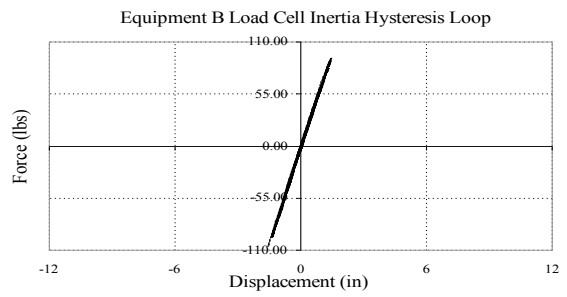
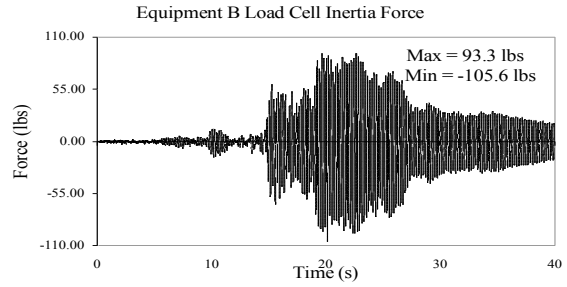
TEST FB-24
EQUIPMENT COMBINATION 3, UNCOUPLED
TABAS GROUND MOTION, 25% SPAN
CABLE LONGITUDINAL FORCES



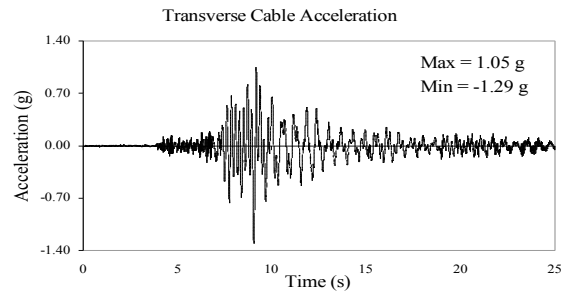
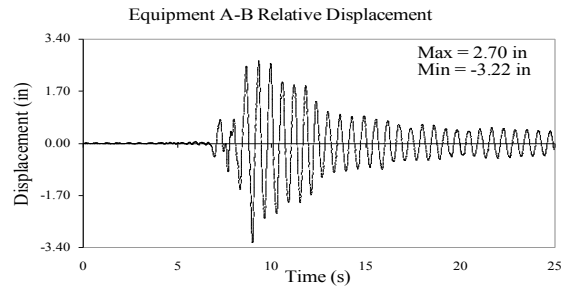
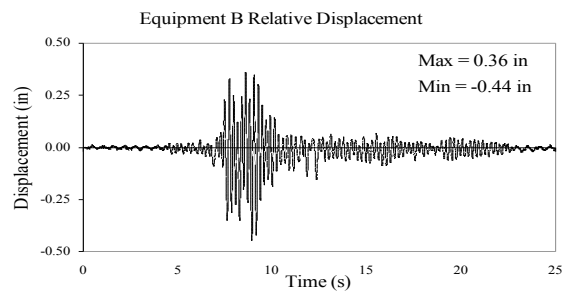
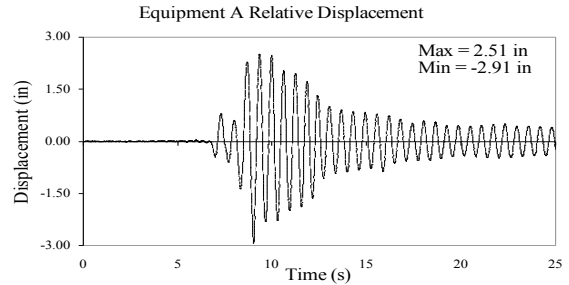
TEST FB-25
EQUIPMENT COMBINATION 3, UNCOUPLED
TABAS GROUND MOTION, 50% SPAN
ACCELERATIONS AND DISPLACEMENTS



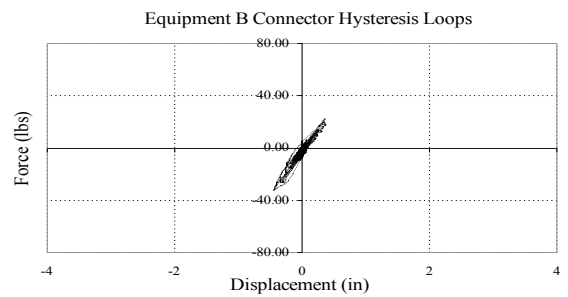
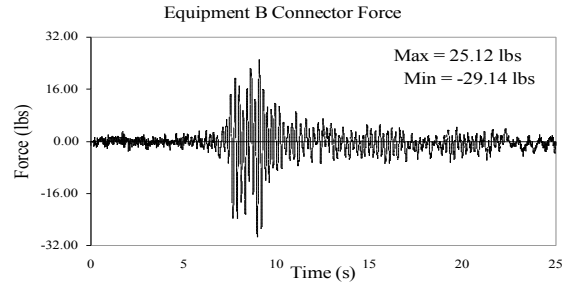
TEST FB-25
EQUIPMENT COMBINATION 3, UNCOUPLED
TABAS GROUND MOTION, 50% SPAN
CABLE LONGITUDINAL FORCES



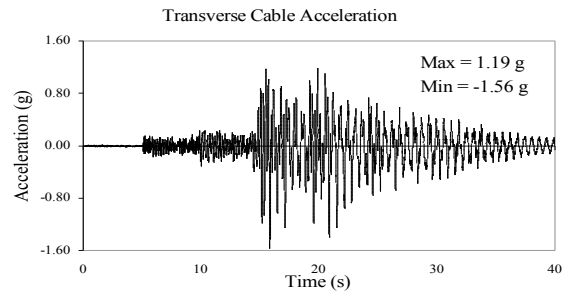
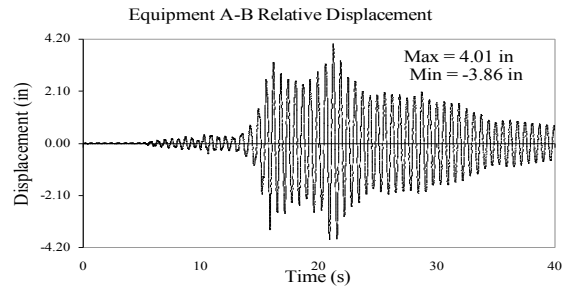
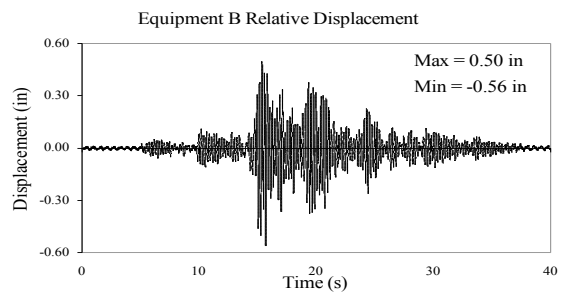
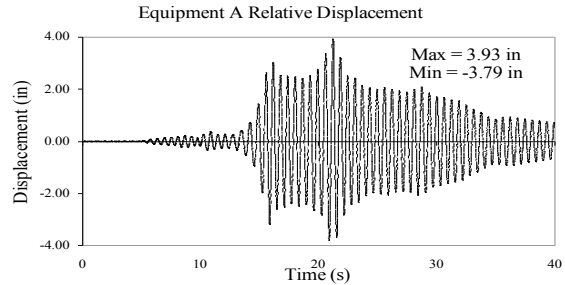
TEST FB-31
EQUIPMENT COMBINATION 1, 1113 MCM, 10% SLACKNESS
NEWHALL GROUND MOTION, 30% SPAN
ACCELERATIONS AND DISPLACEMENTS



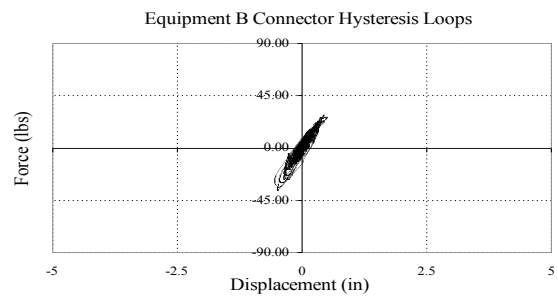
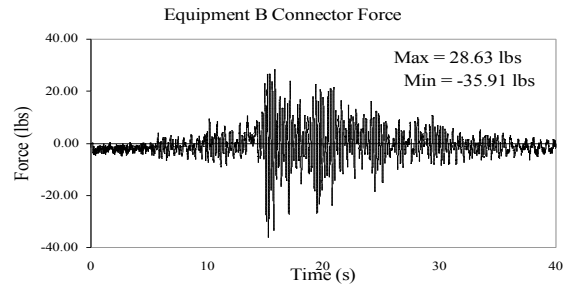
TEST FB-31
EQUIPMENT COMBINATION 1, 1113 MCM, 10% SLACKNESS
NEWHALL GROUND MOTION, 30% SPAN
CABLE LONGITUDINAL FORCES



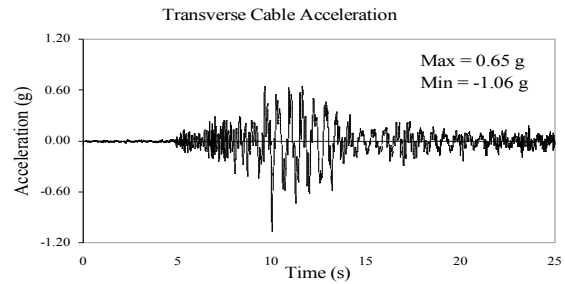
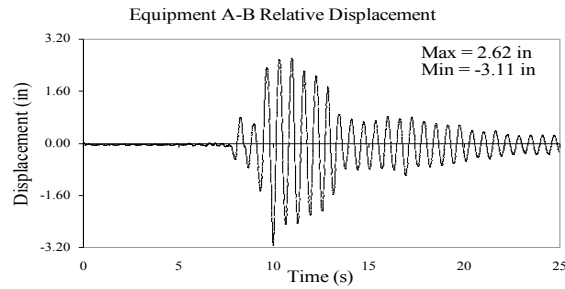
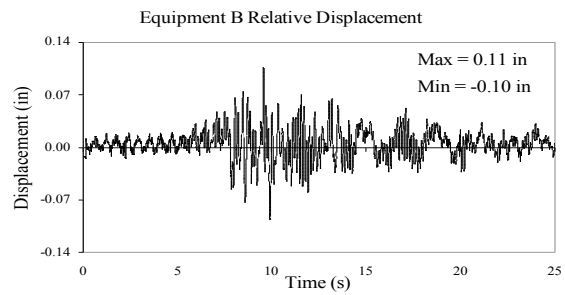
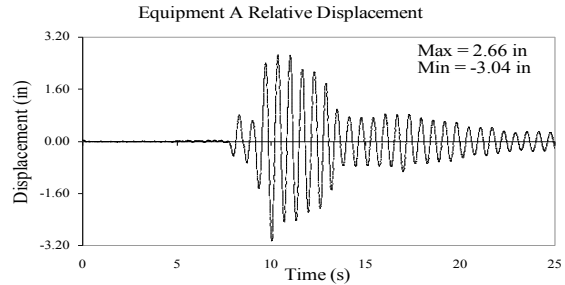
TEST FB-32
EQUIPMENT COMBINATION 1, 1113 MCM, 10% SLACKNESS
TABAS GROUND MOTION, 25% SPAN
ACCELERATIONS AND DISPLACEMENTS



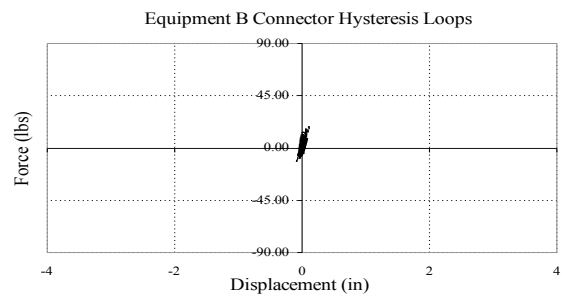
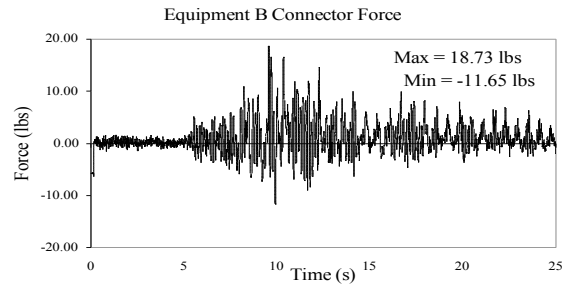
TEST FB-32
EQUIPMENT COMBINATION 1, 1113 MCM, 10% SLACKNESS
TABAS GROUND MOTION, 25% SPAN
CABLE LONGITUDINAL FORCES



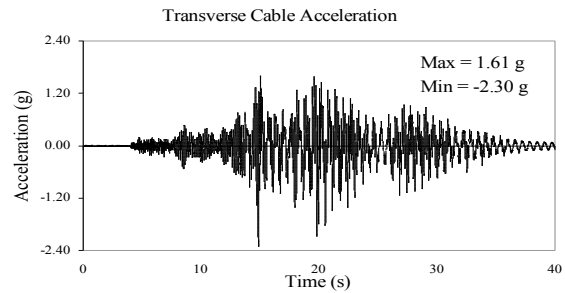
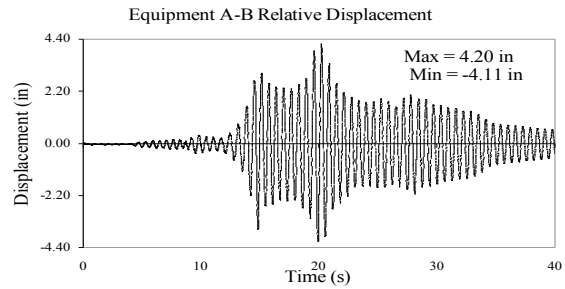
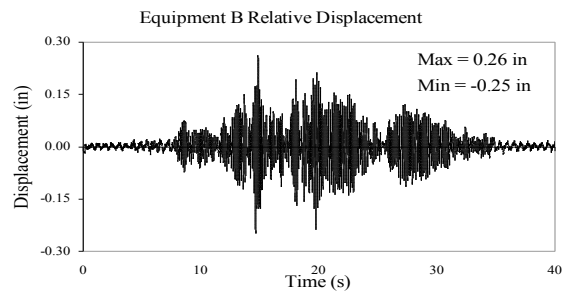
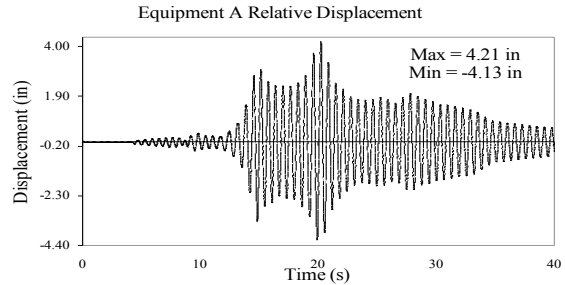
TEST FB-35
EQUIPMENT COMBINATION 2, 1113 MCM, 10% SLACKNESS
NEWHALL GROUND MOTION, 30% SPAN
ACCELERATIONS AND DISPLACEMENTS



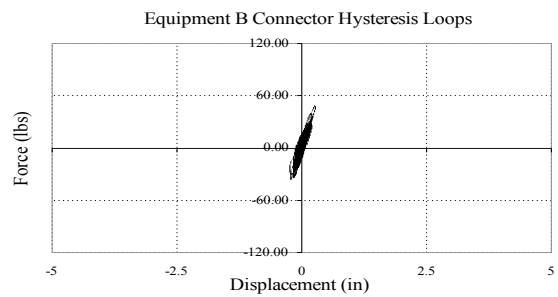
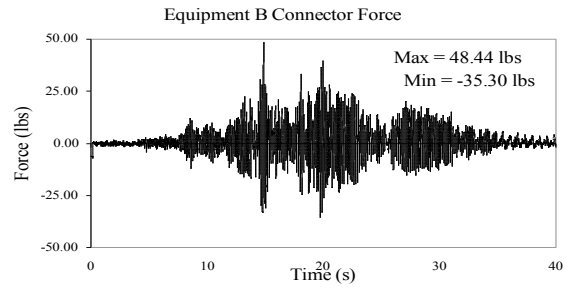
TEST FB-35
EQUIPMENT COMBINATION 2, 1113 MCM, 10% SLACKNESS
NEWHALL GROUND MOTION, 30% SPAN
CABLE LONGITUDINAL FORCES



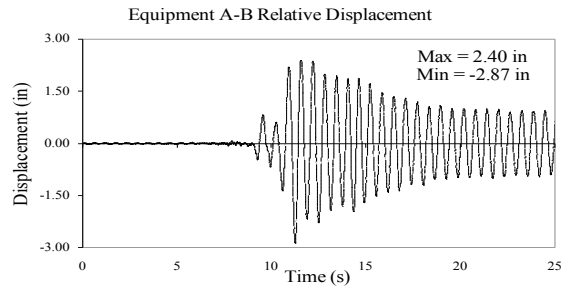
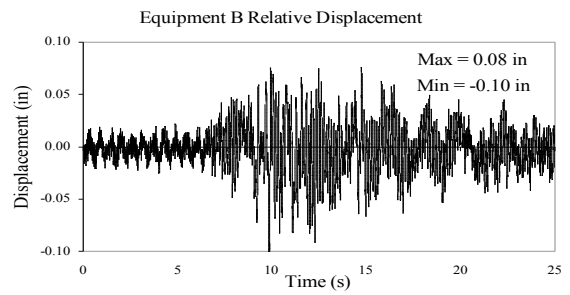
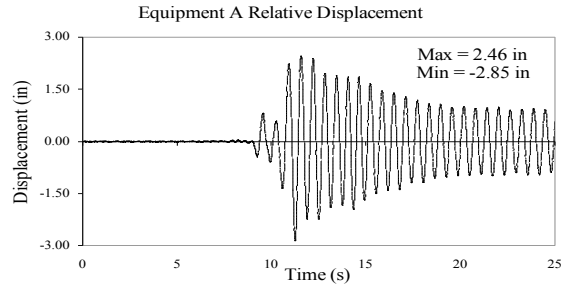
TEST FB-36
EQUIPMENT COMBINATION 2, 1113 MCM, 10% SLACKNESS
TABAS GROUND MOTION, 25% SPAN
ACCELERATIONS AND DISPLACEMENTS



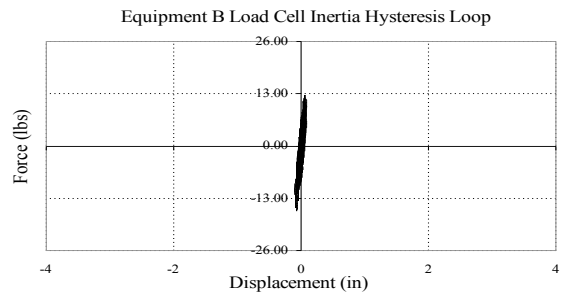
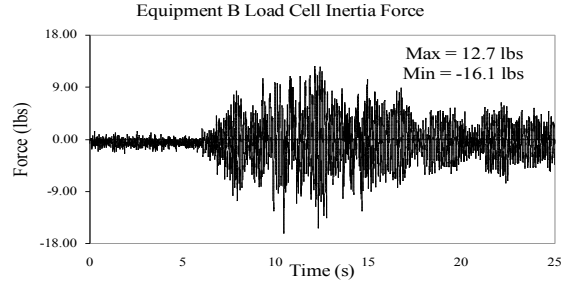
TEST FB-36
EQUIPMENT COMBINATION 2, 1113 MCM, 10% SLACKNESS
TABAS GROUND MOTION, 25% SPAN
CABLE LONGITUDINAL FORCES



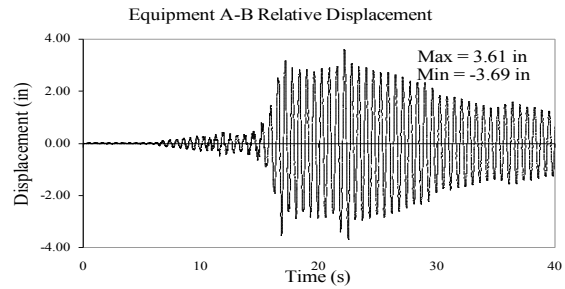
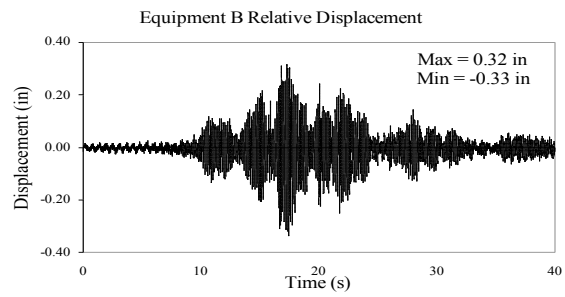
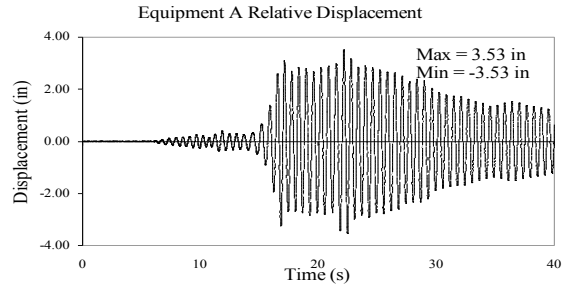
TEST FB-40
EQUIPMENT COMBINATION 2, UNCOUPLED
NEWHALL GROUND MOTION, 30% SPAN
ACCELERATIONS AND DISPLACEMENTS



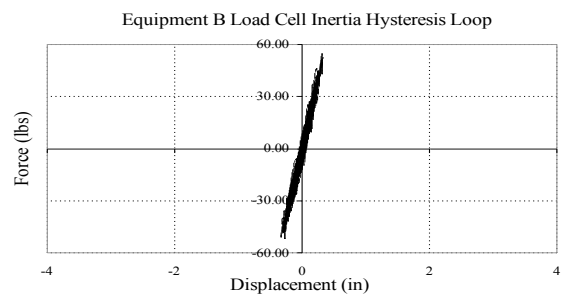
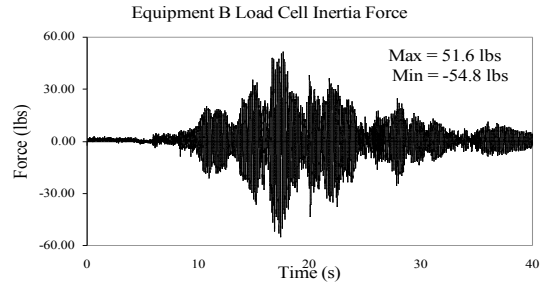
TEST FB-40
EQUIPMENT COMBINATION 2, UNCOUPLED
NEWHALL GROUND MOTION, 30% SPAN
CABLE LONGITUDINAL FORCES



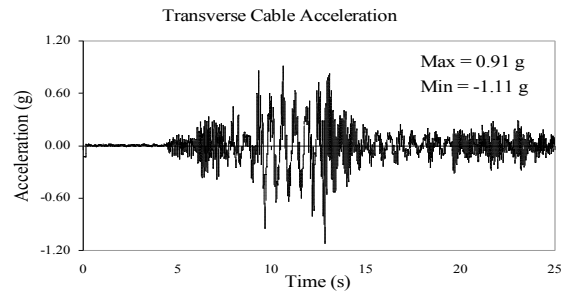
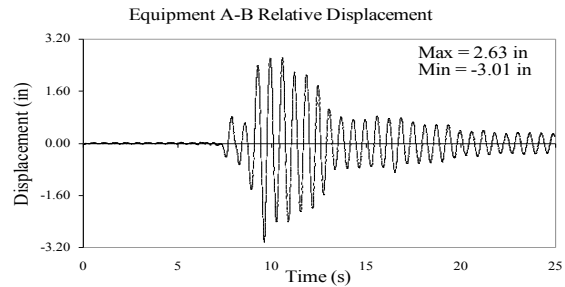
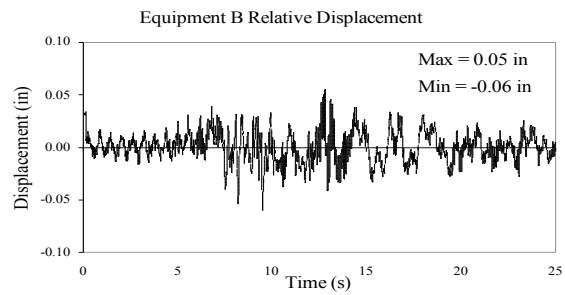
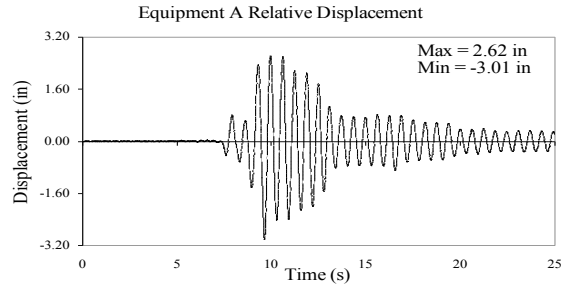
TEST FB-41
EQUIPMENT COMBINATION 2, UNCOUPLED
TABAS GROUND MOTION, 25% SPAN
ACCELERATIONS AND DISPLACEMENTS



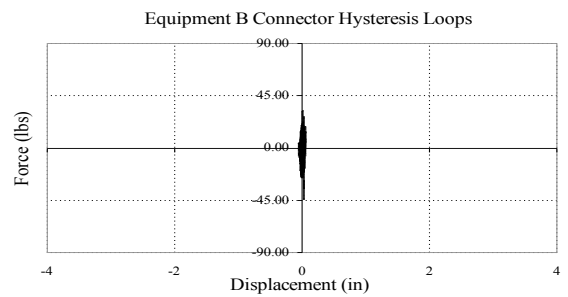
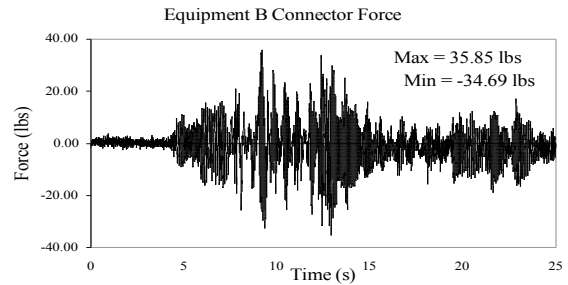
TEST FB-41
EQUIPMENT COMBINATION 2, UNCOUPLED
TABAS GROUND MOTION, 25% SPAN
CABLE LONGITUDINAL FORCES



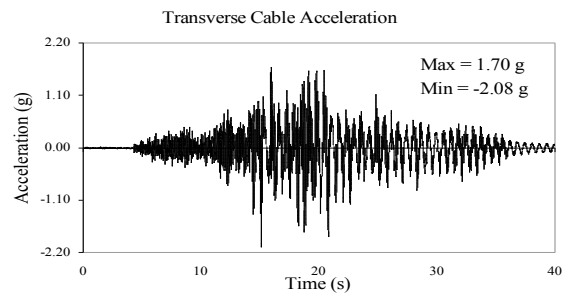
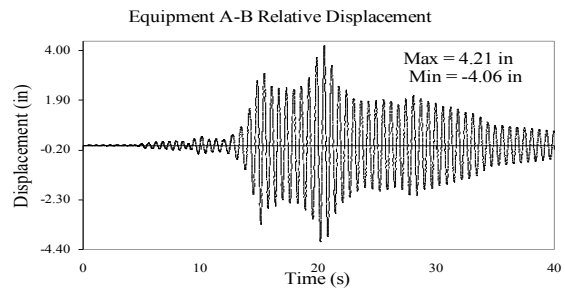
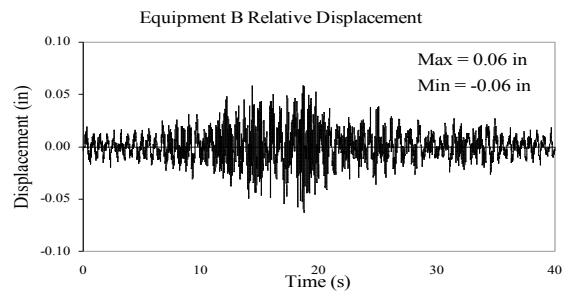
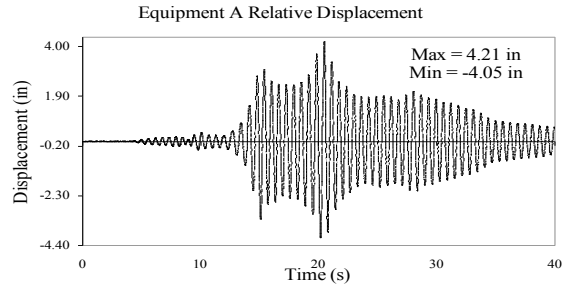
TEST FB-49
EQUIPMENT COMBINATION 5, 1113 MCM, 10% SLACKNESS
NEWHALL GROUND MOTION, 30% SPAN
ACCELERATIONS AND DISPLACEMENTS



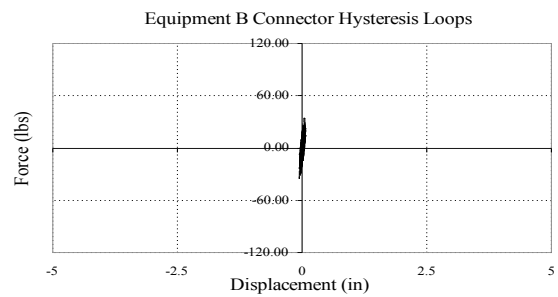
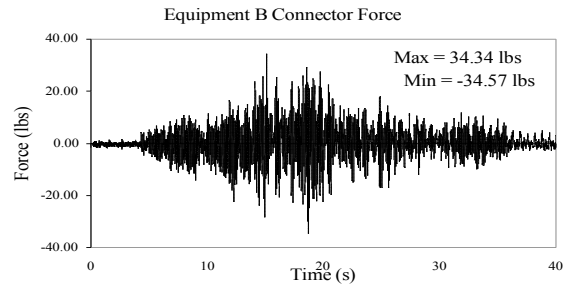
TEST FB-49
EQUIPMENT COMBINATION 5, 1113 MCM, 10% SLACKNESS
NEWHALL GROUND MOTION, 30% SPAN
CABLE LONGITUDINAL FORCES



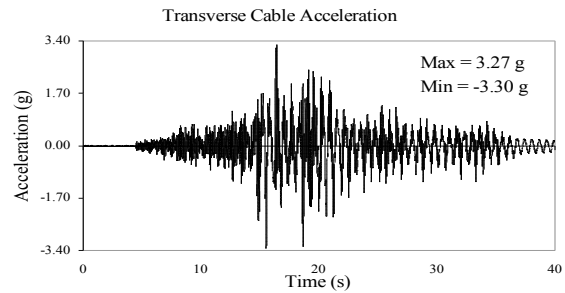
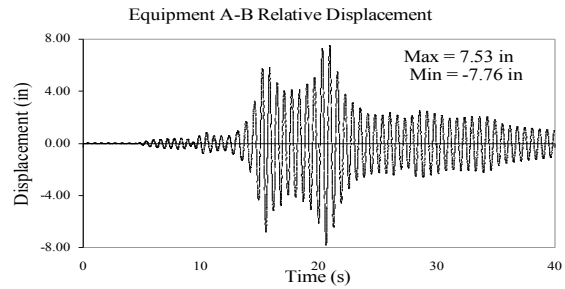
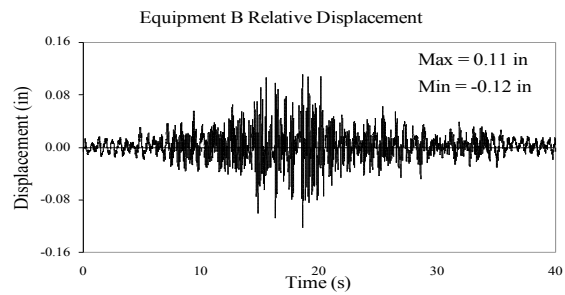
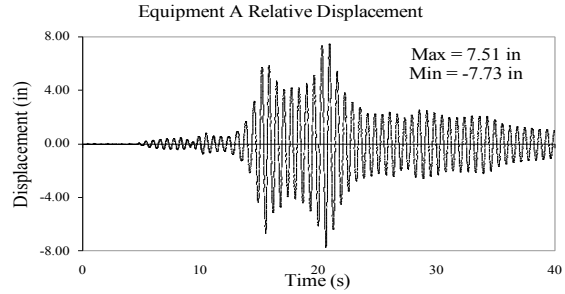
TEST FB-51
EQUIPMENT COMBINATION 5, 1113 MCM, 10% SLACKNESS
TABAS GROUND MOTION, 25% SPAN
ACCELERATIONS AND DISPLACEMENTS



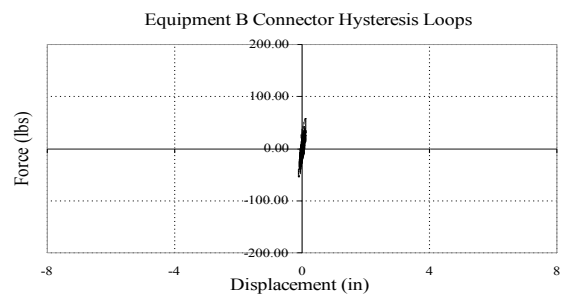
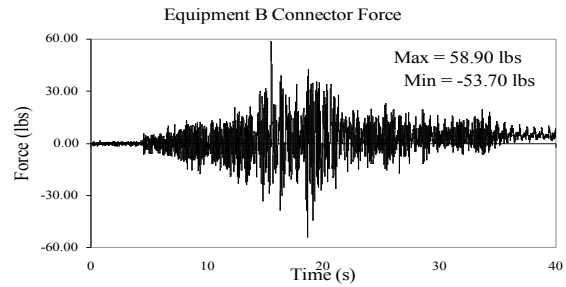
TEST FB-51
EQUIPMENT COMBINATION 5, 1113 MCM, 10% SLACKNESS
TABAS GROUND MOTION, 25% SPAN
CABLE LONGITUDINAL FORCES



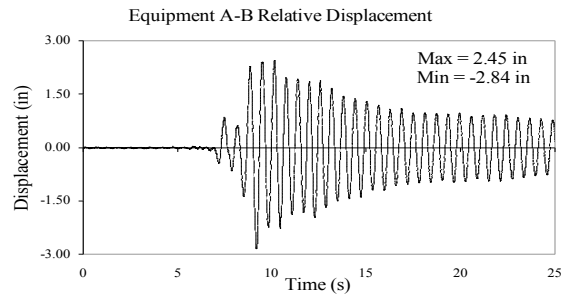
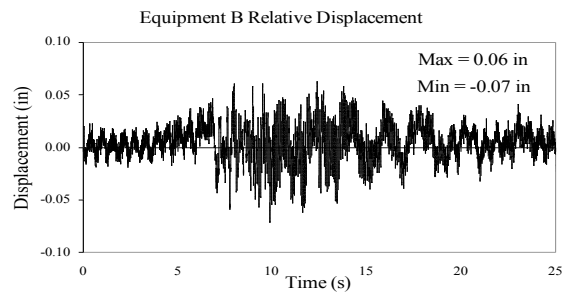
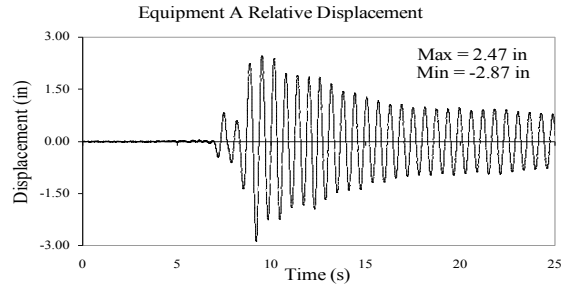
TEST FB-52
EQUIPMENT COMBINATION 5, 1113 MCM, 10% SLACKNESS
TABAS GROUND MOTION, 50% SPAN
ACCELERATIONS AND DISPLACEMENTS



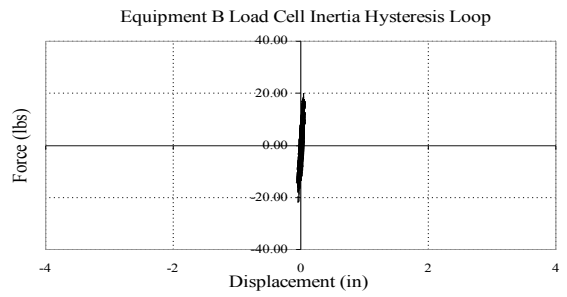
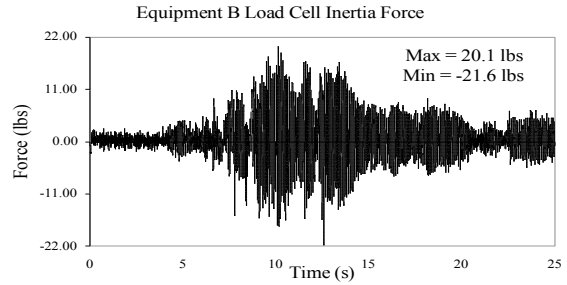
TEST FB-52
EQUIPMENT COMBINATION 5, 1113 MCM, 10% SLACKNESS
TABAS GROUND MOTION, 50% SPAN
CABLE LONGITUDINAL FORCES



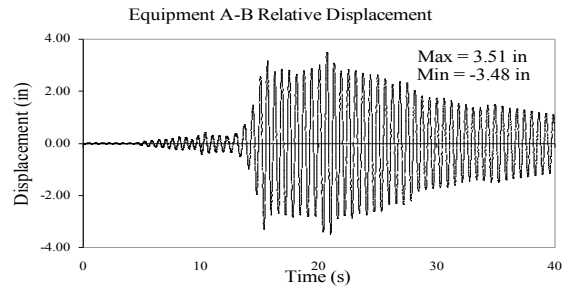
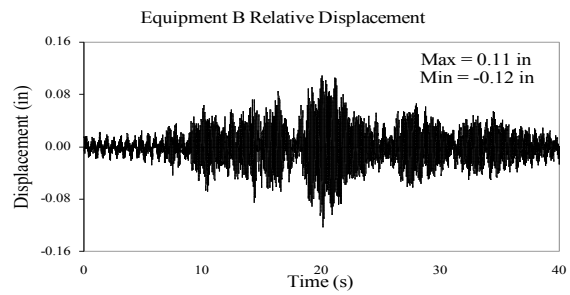
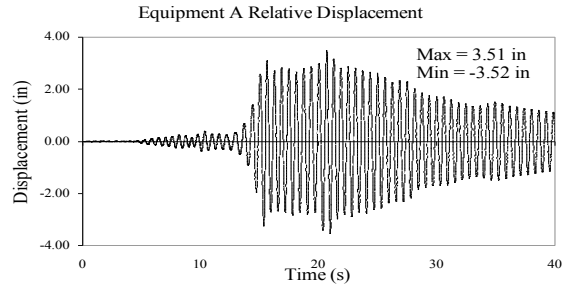
TEST FB-53
EQUIPMENT COMBINATION 5, UNCOUPLED
NEWHALL GROUND MOTION, 30% SPAN
ACCELERATIONS AND DISPLACEMENTS



TEST FB-53
EQUIPMENT COMBINATION 5, UNCOUPLED
NEWHALL GROUND MOTION, 30% SPAN
CABLE LONGITUDINAL FORCES



TEST FB-55
EQUIPMENT COMBINATION 5, UNCOUPLED
TABAS GROUND MOTION, 25% SPAN
ACCELERATIONS AND DISPLACEMENTS



TEST FB-55
EQUIPMENT COMBINATION 5, UNCOUPLED
TABAS GROUND MOTION, 25% SPAN
CABLE LONGITUDINAL FORCES

