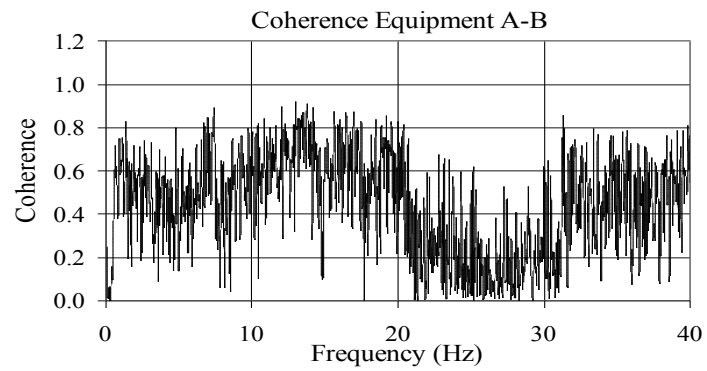
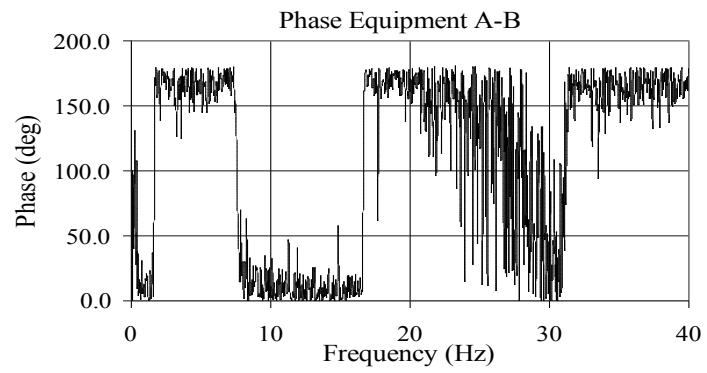
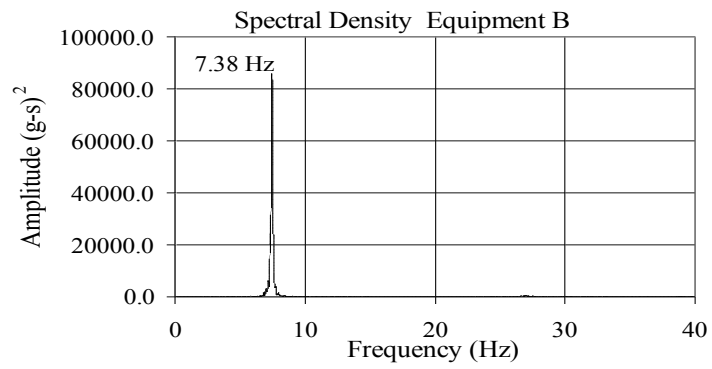
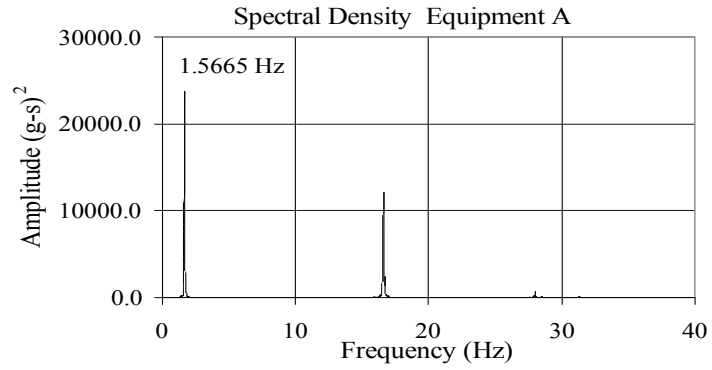


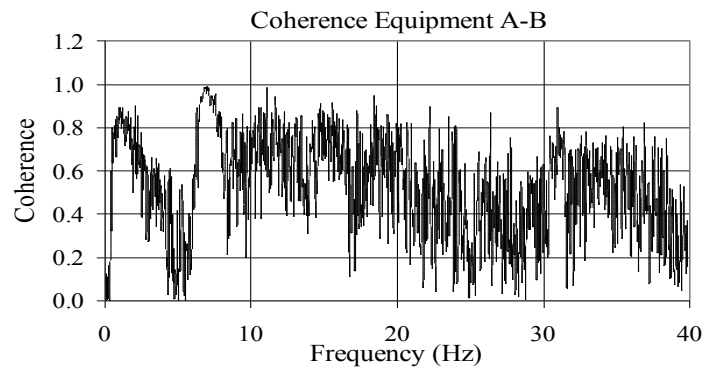
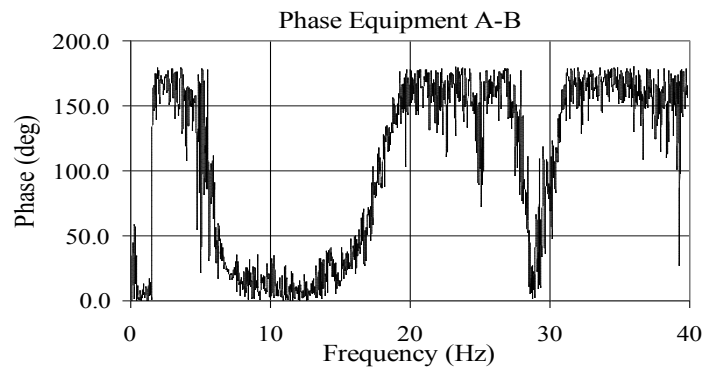
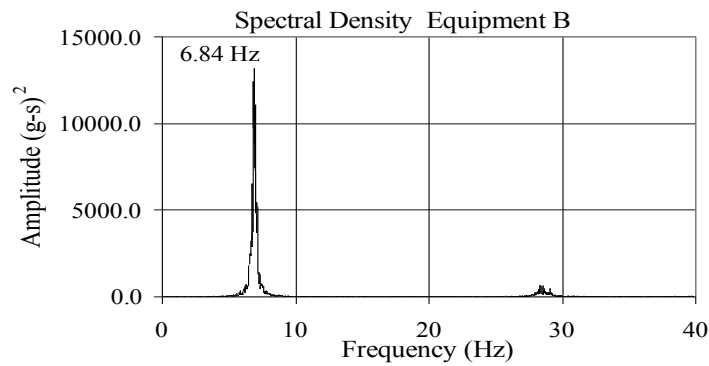
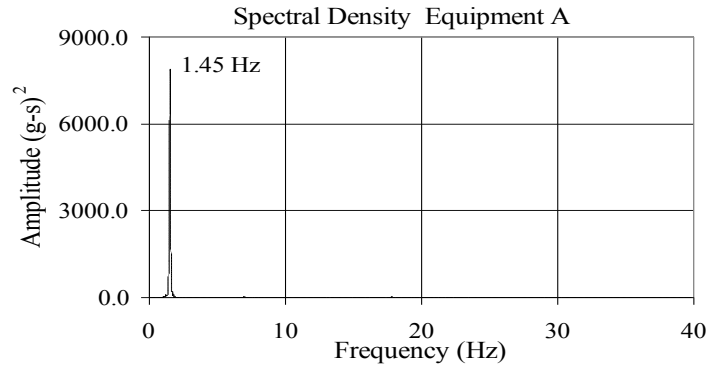
**APPENDIX C**

**RESULTS OF FREQUENCY EVALUATION TESTS**

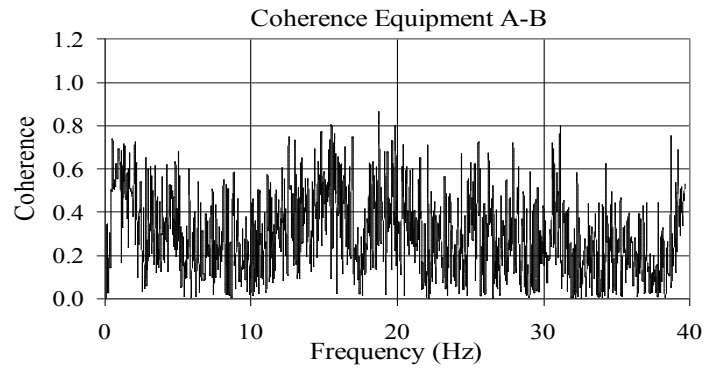
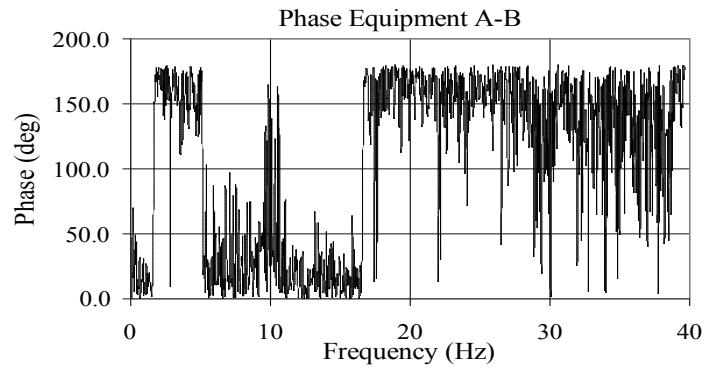
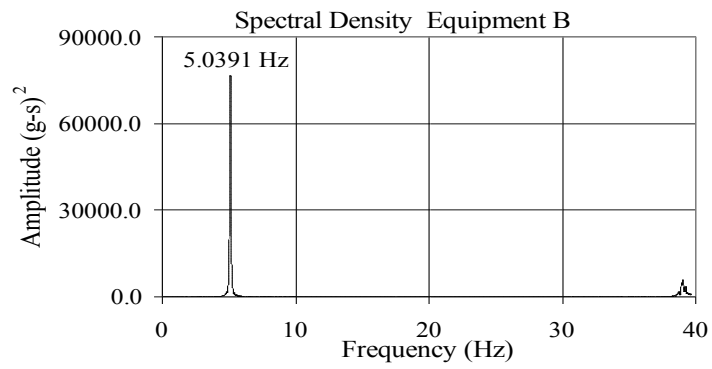
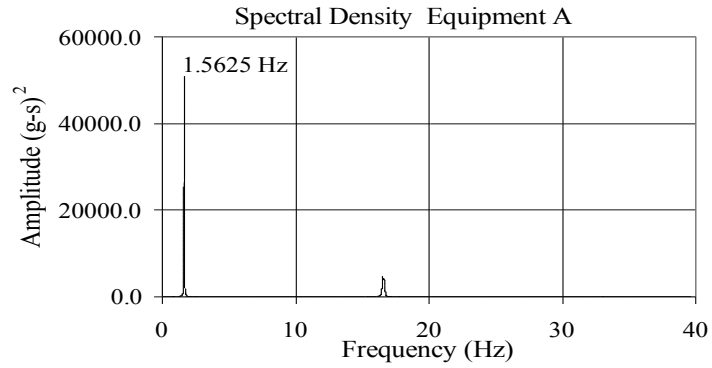
# TEST FB-1 EQUIPMENT COMBINATION 4 UNCOUPLED



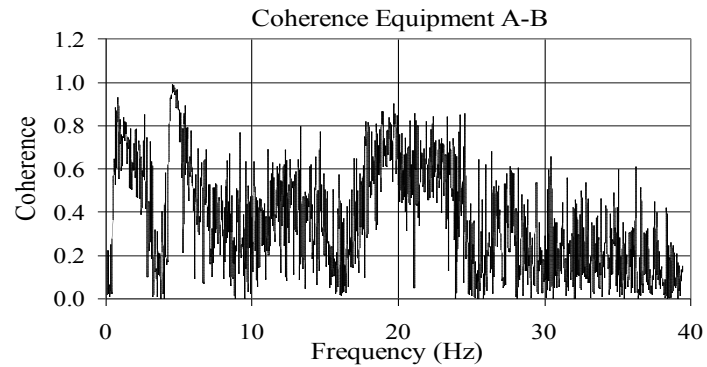
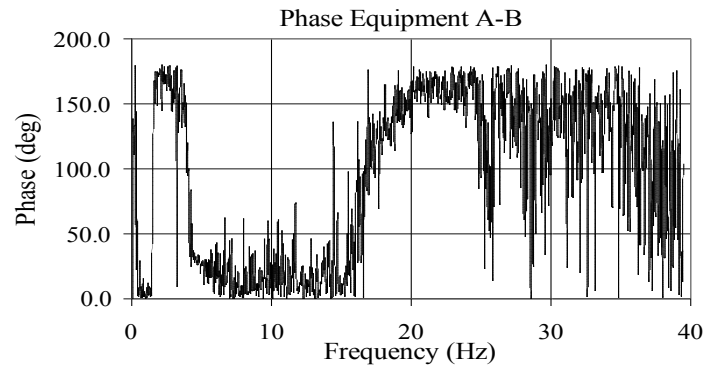
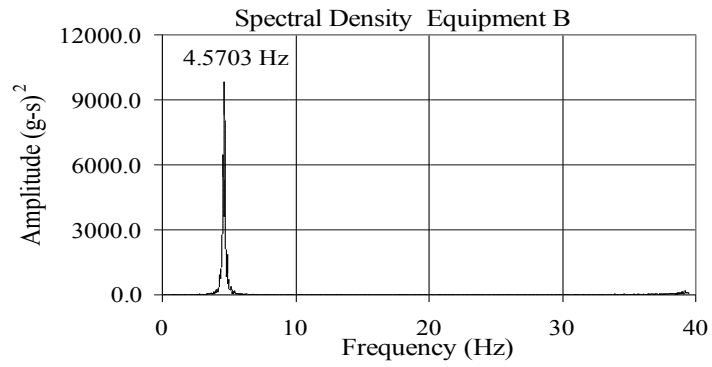
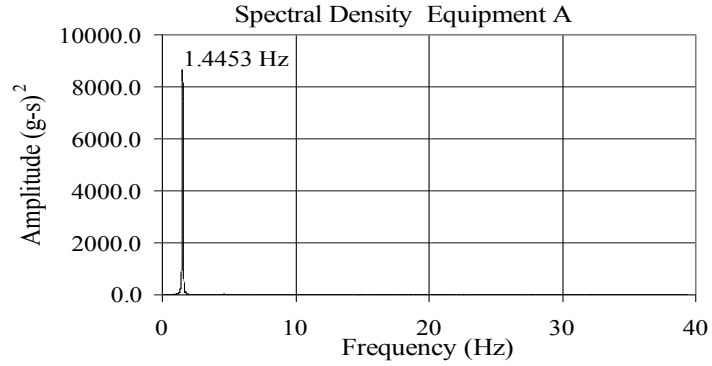
**TEST FB-4**  
**EQUIPMENT COMBINATION 4**  
**1113 MCM, 10% SLACKNESS**



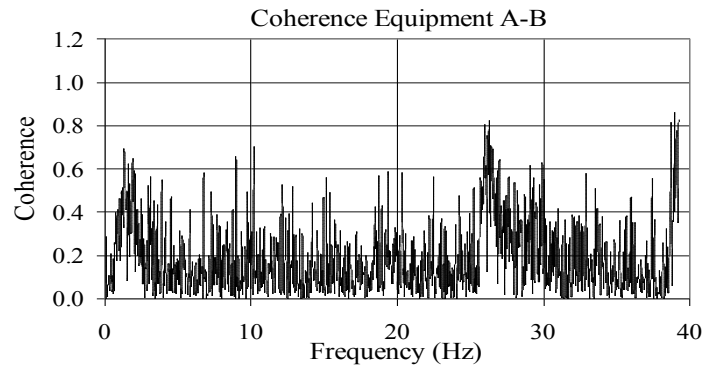
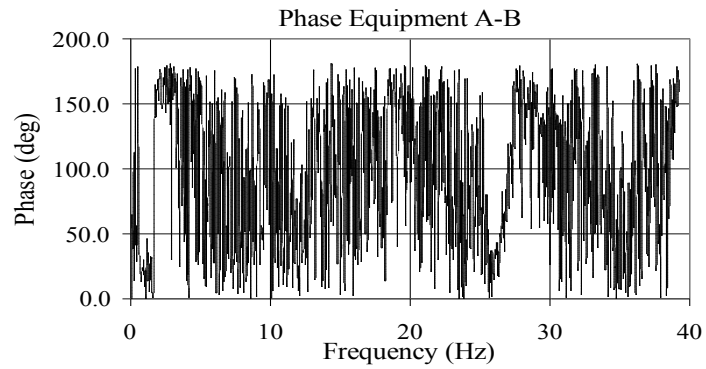
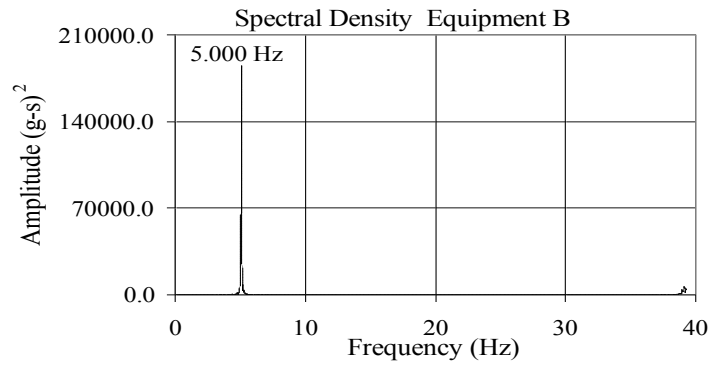
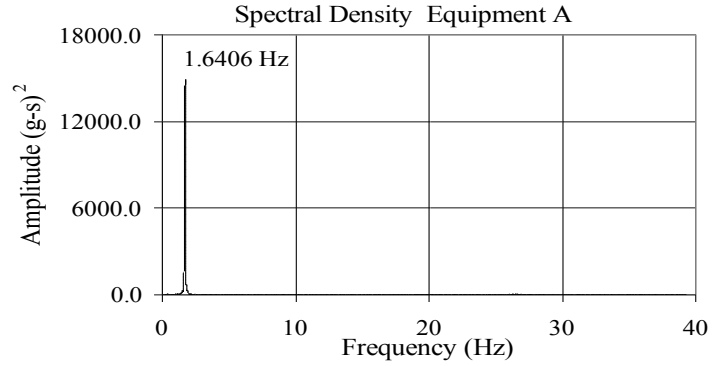
**TEST FB-14  
EQUIPMENT COMBINATION 3  
UNCOUPLED**



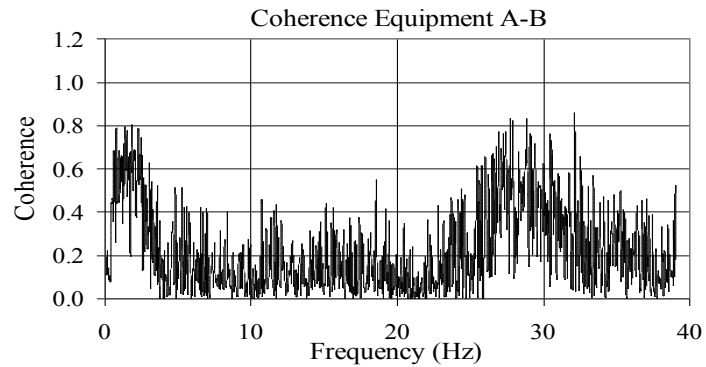
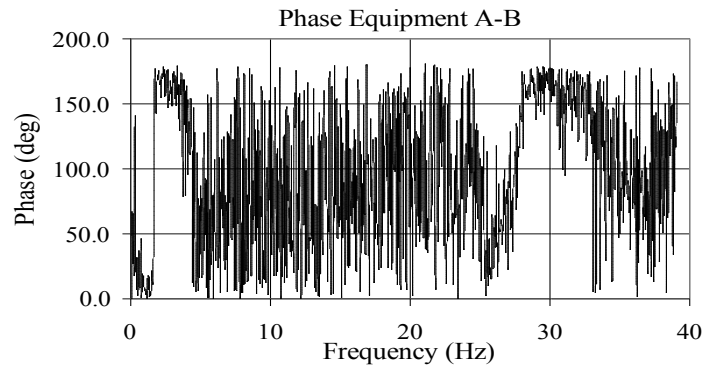
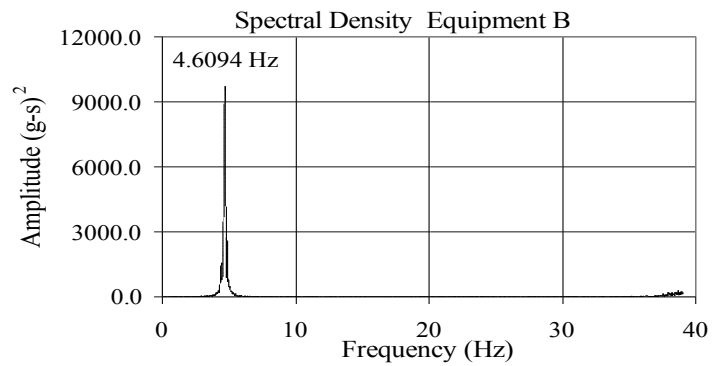
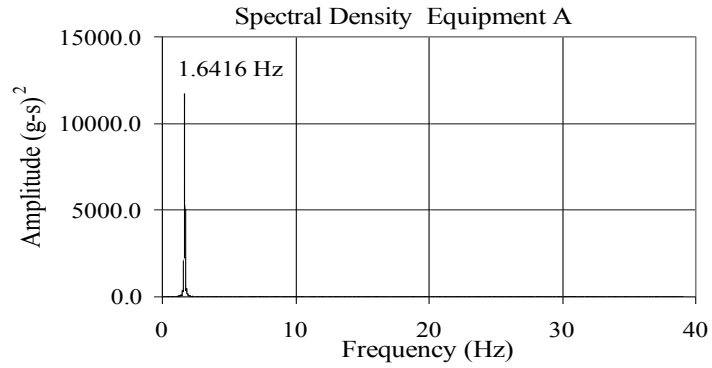
**TEST FB-16**  
**EQUIPMENT COMBINATION 3**  
**1113 MCM, 10% SLACKNESS**



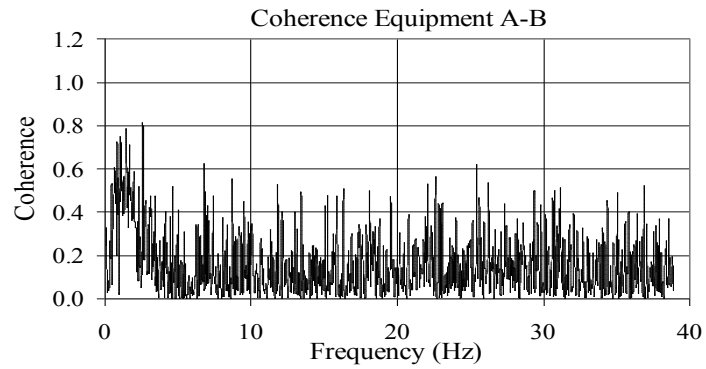
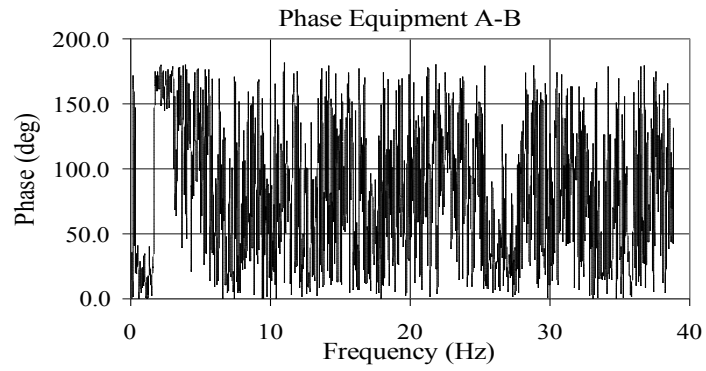
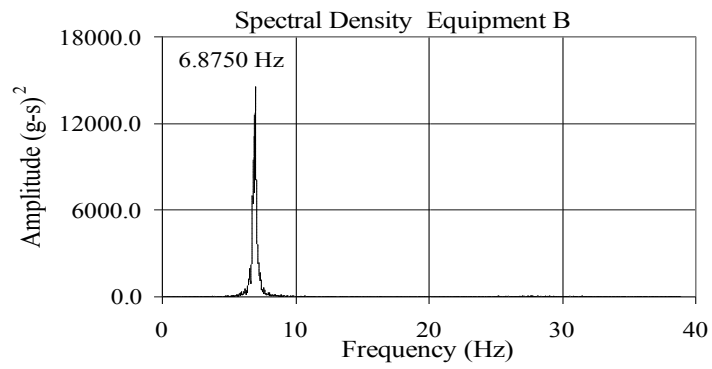
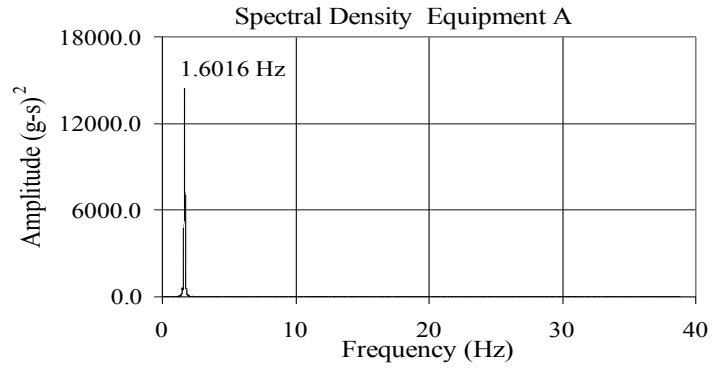
**TEST FB-26  
EQUIPMENT COMBINATION 1  
UNCOUPLED**



**TEST FB-29**  
**EQUIPMENT COMBINATION 1**  
**1113 MCM, 10% SLACKNESS**

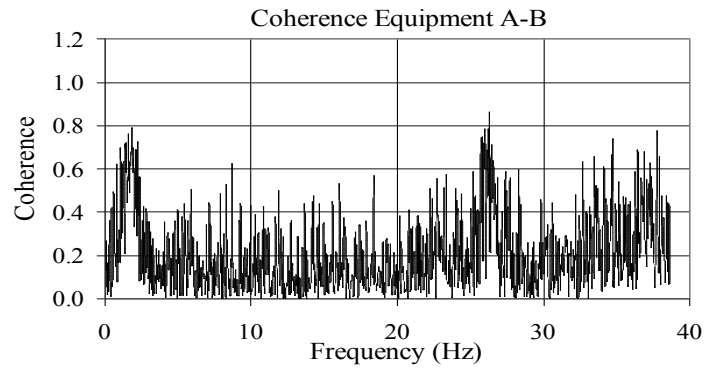
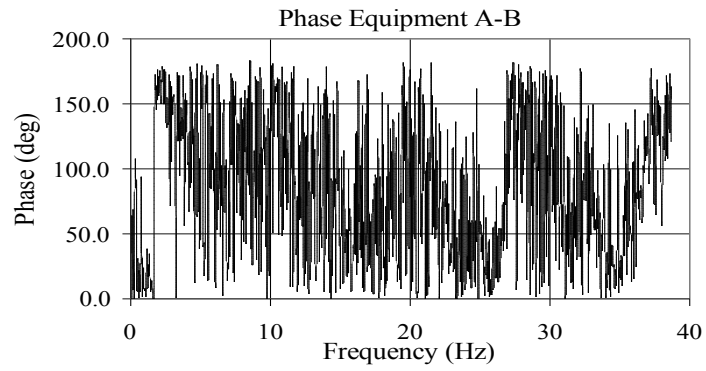
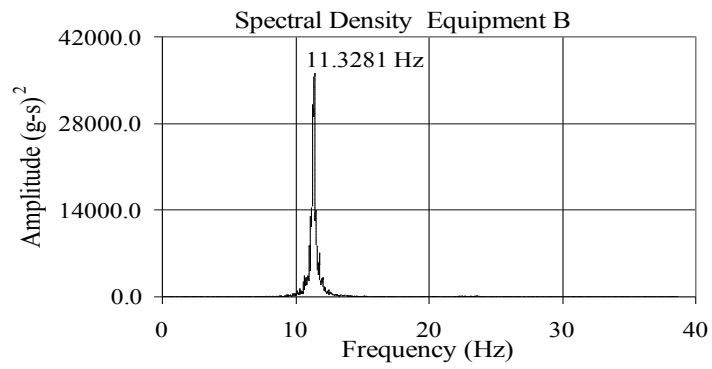
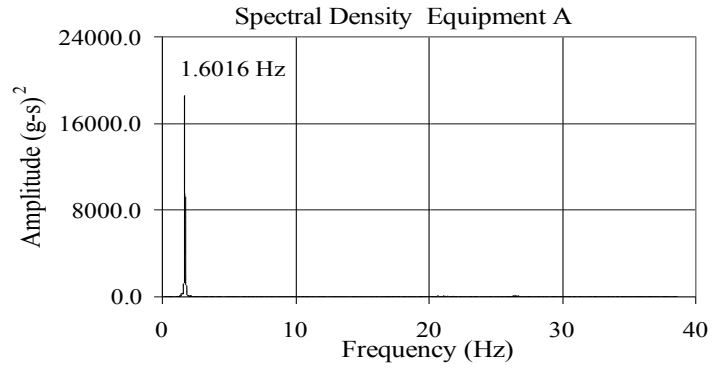


**TEST FB-33**  
**EQUIPMENT COMBINATION 2**  
**1113 MCM, 10% SLACKNESS**

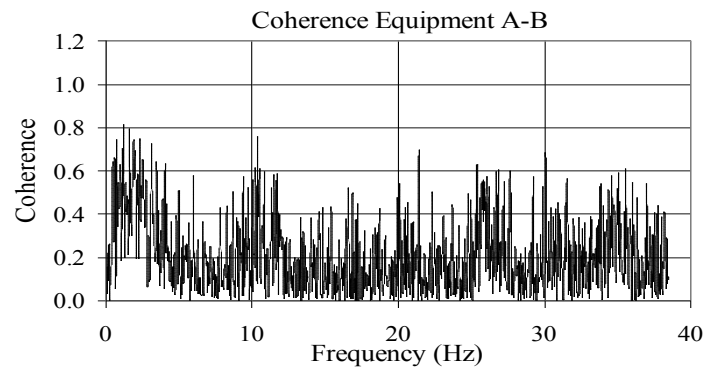
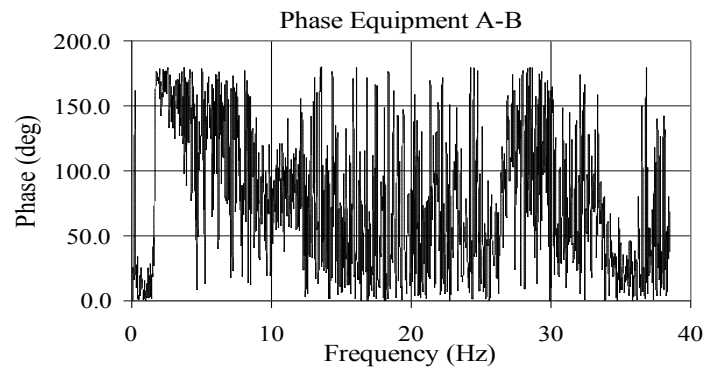
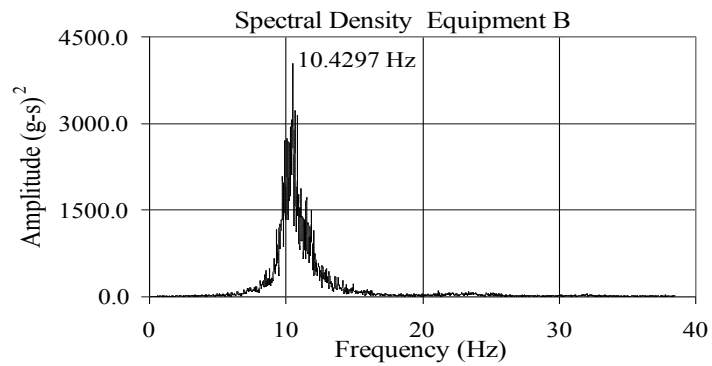
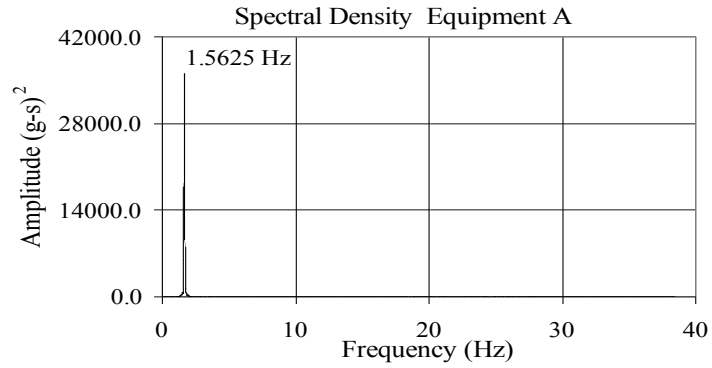




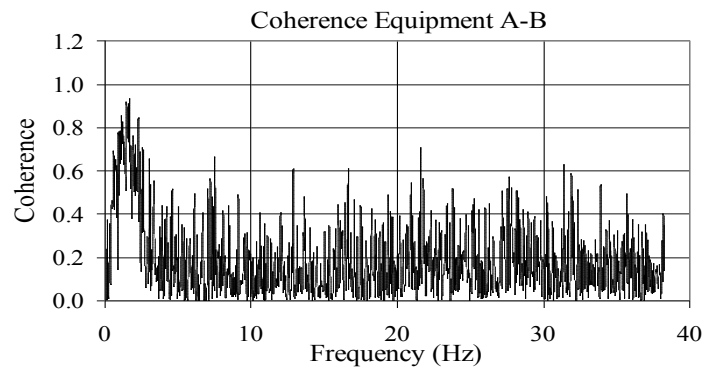
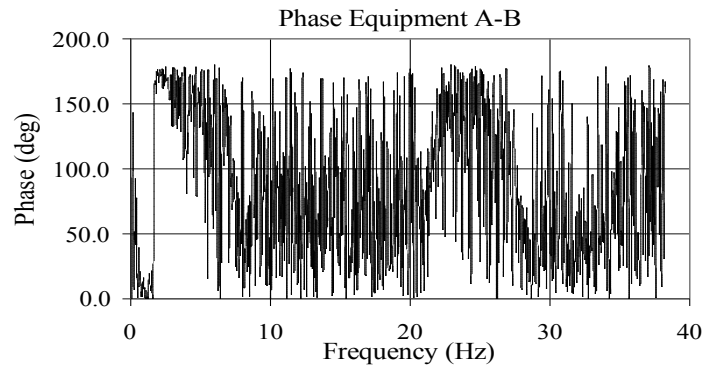
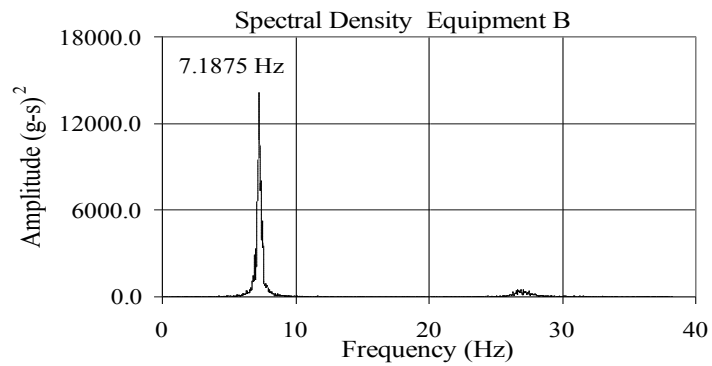
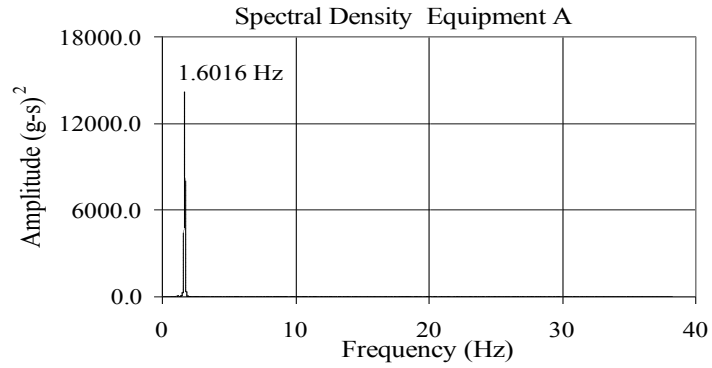
**TEST FB-44  
EQUIPMENT COMBINATION 2  
UNCOUPLED**



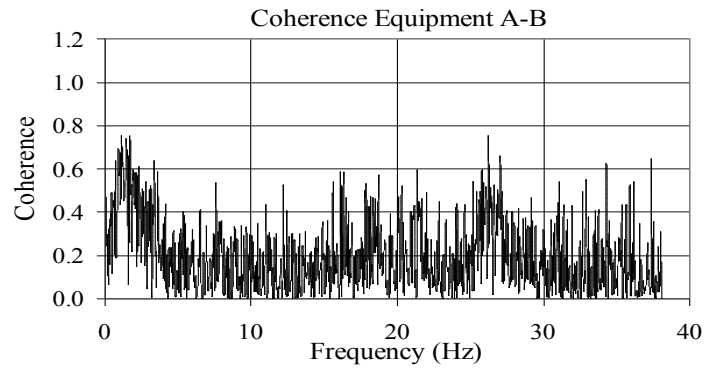
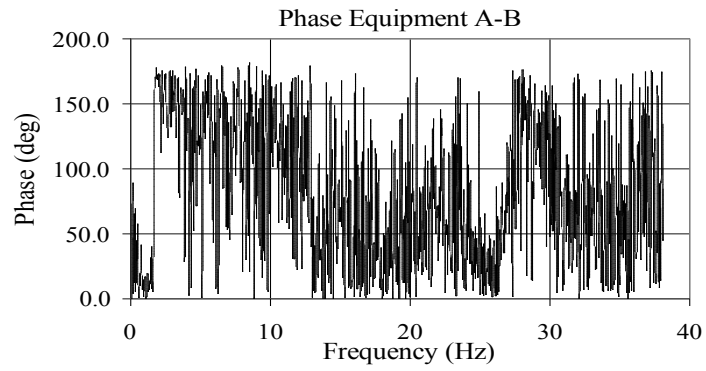
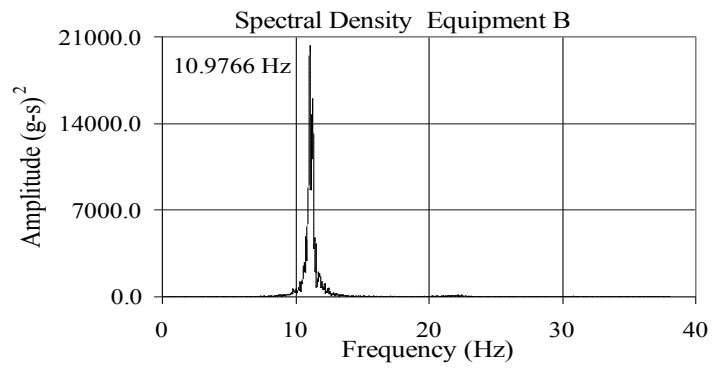
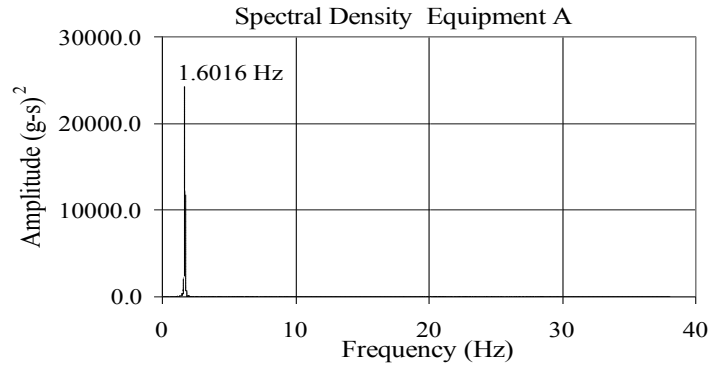
**TEST FB-47**  
**EQUIPMENT COMBINATION 5**  
**1113 MCM, 10% SLACKNESS**



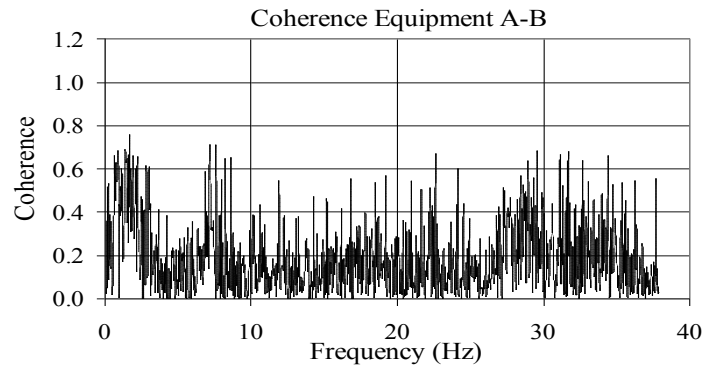
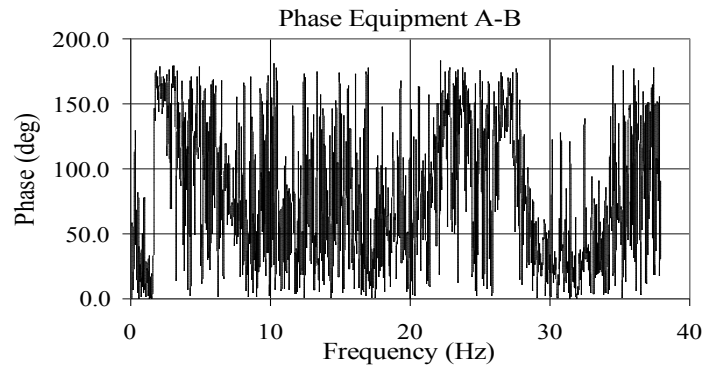
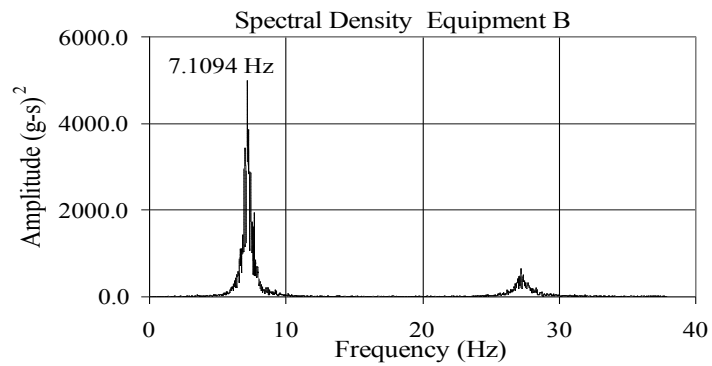
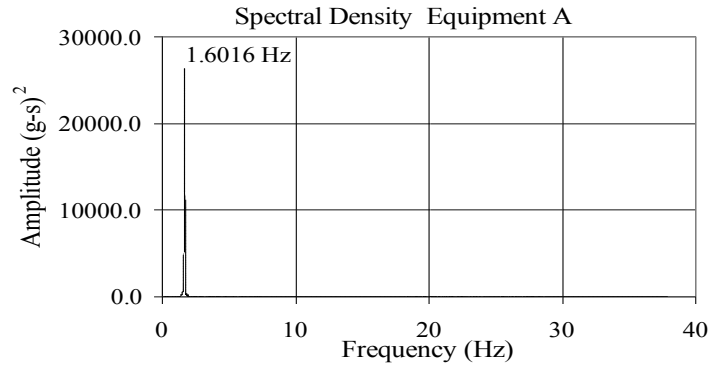
**TEST FB-57**  
**EQUIPMENT COMBINATION 2**  
**2300 MCM, 10% SLACKNESS**



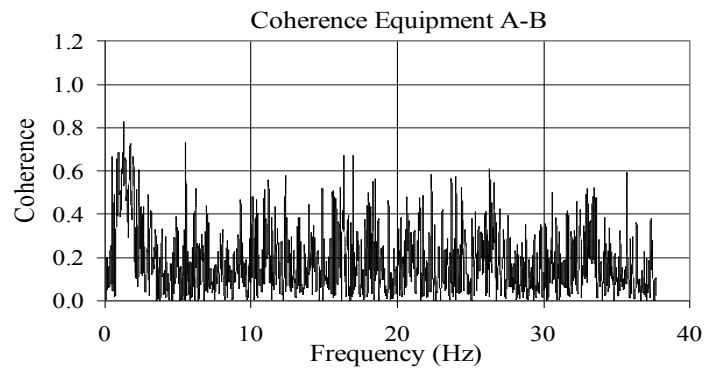
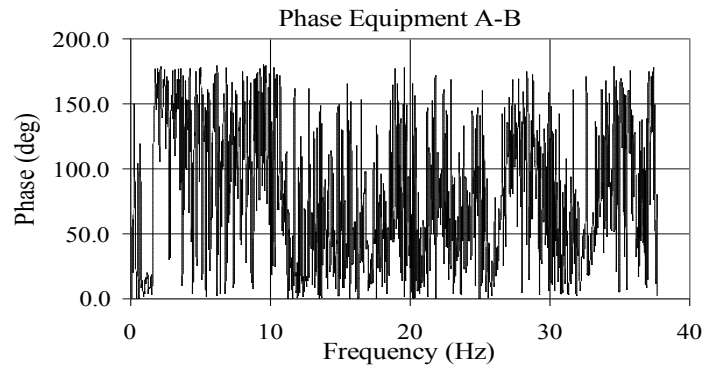
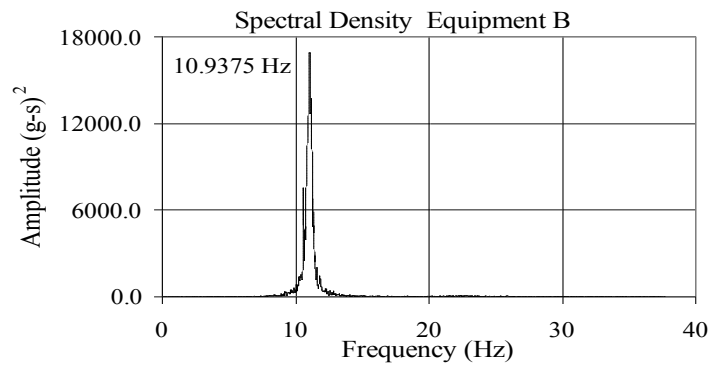
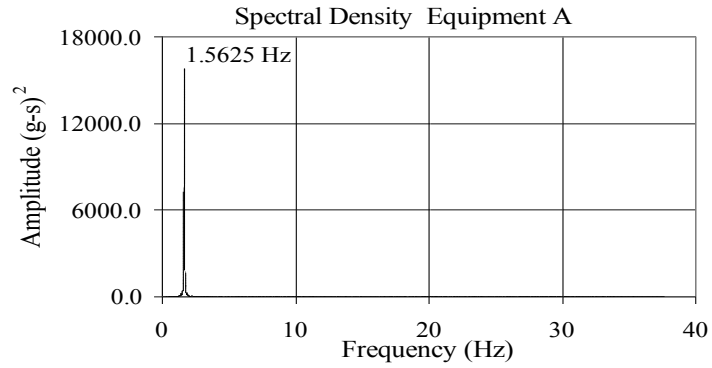
**TEST FB-64**  
**EQUIPMENT COMBINATION 5**  
**2300 MCM, 10% SLACKNESS**



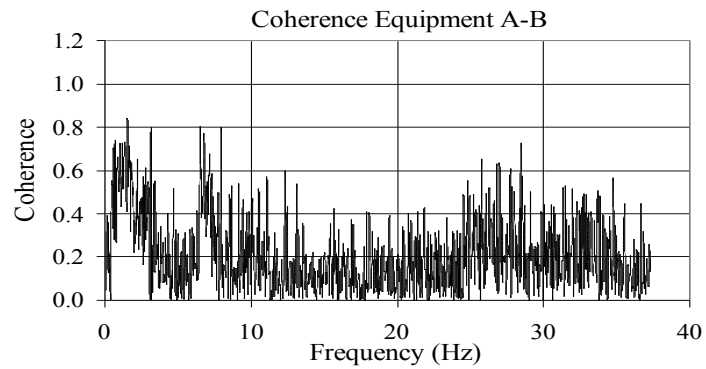
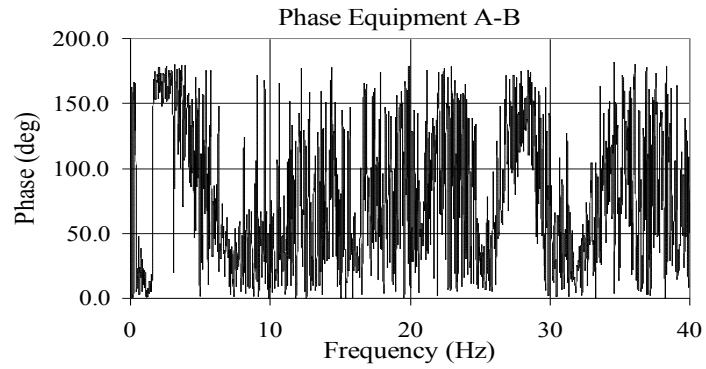
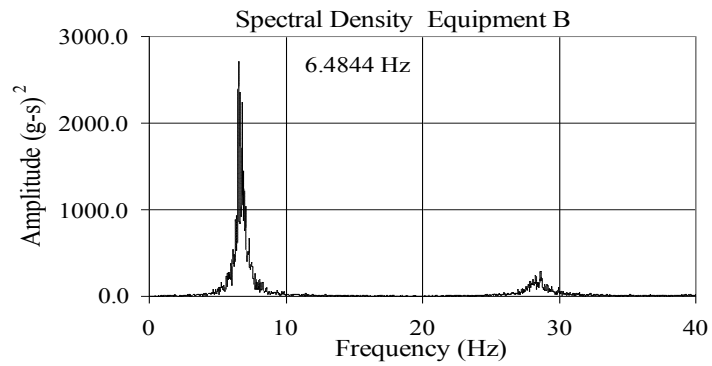
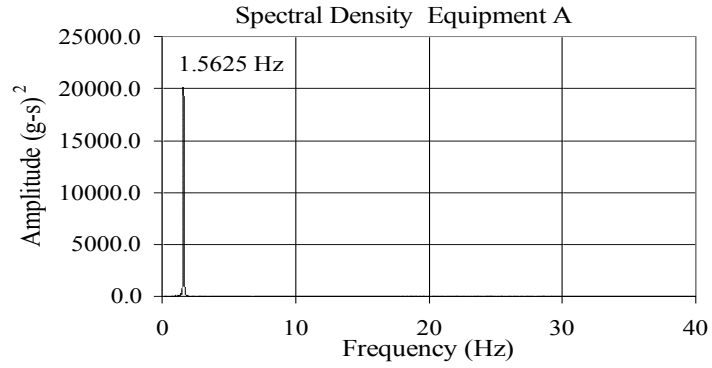
**TEST FB-70**  
**EQUIPMENT COMBINATION 2**  
**2300 MCM, 5% SLACKNESS**



**TEST FB-77**  
**EQUIPMENT COMBINATION 5**  
**2300 MCM, 5% SLACKNESS**

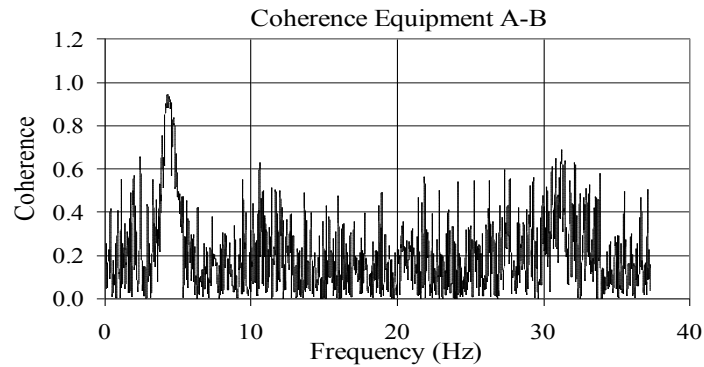
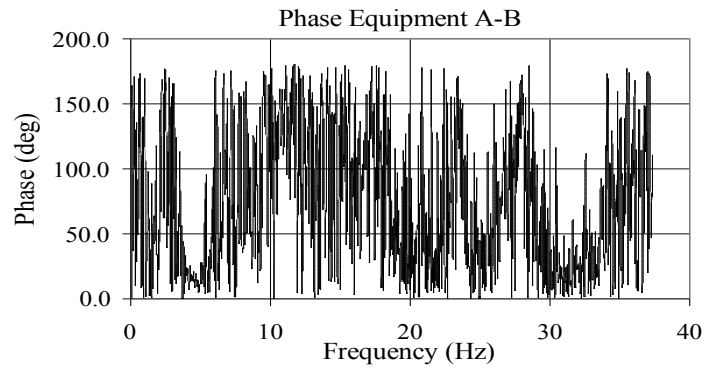
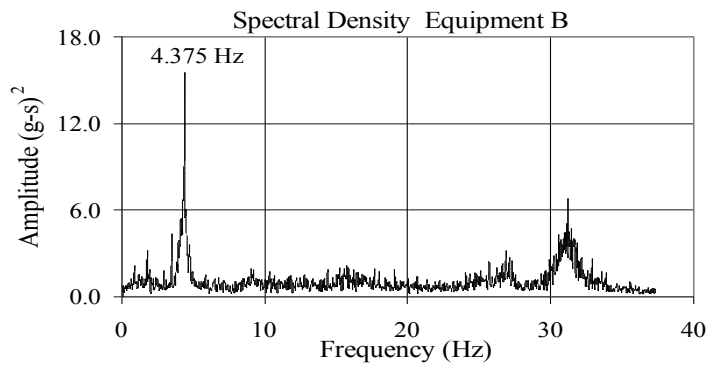
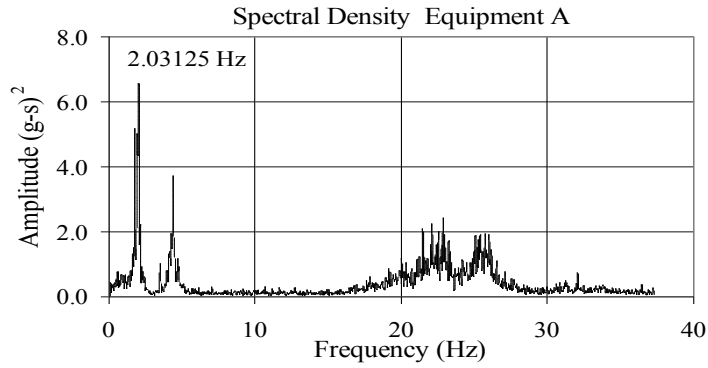


**TEST FB-83**  
**EQUIPMENT COMBINATION 2**  
**1113 MCM, 5% SLACKNESS**



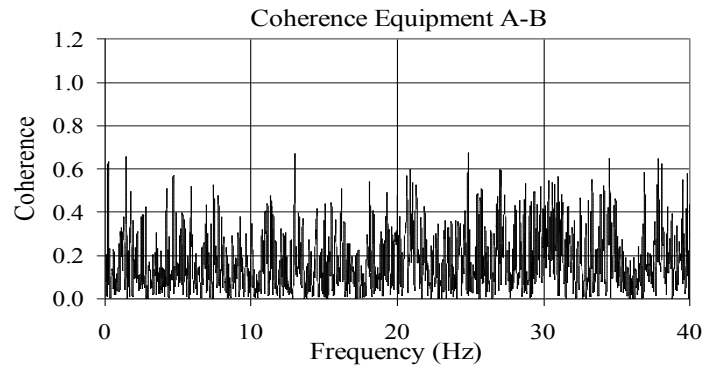
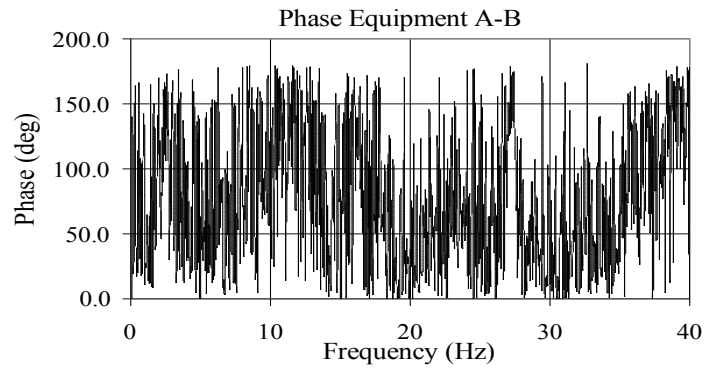
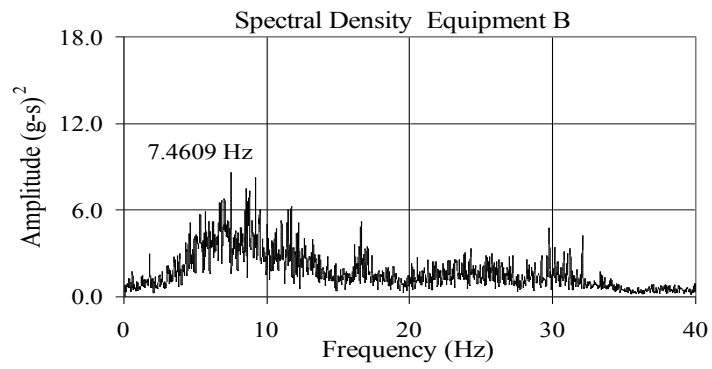
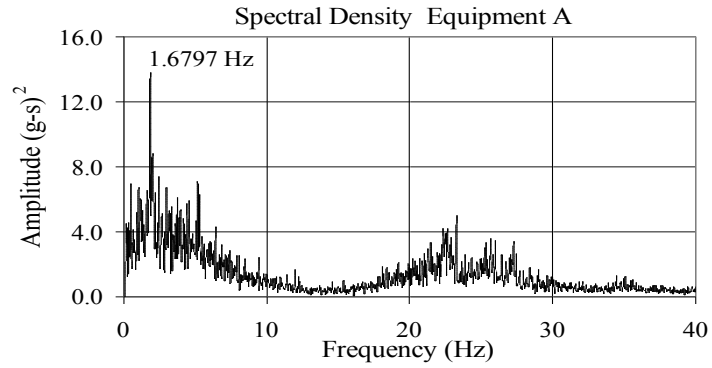
**TEST FB-96**

**EQUIPMENT COMBINATION 2  
1113 MCM, 2% SLACKNESS**

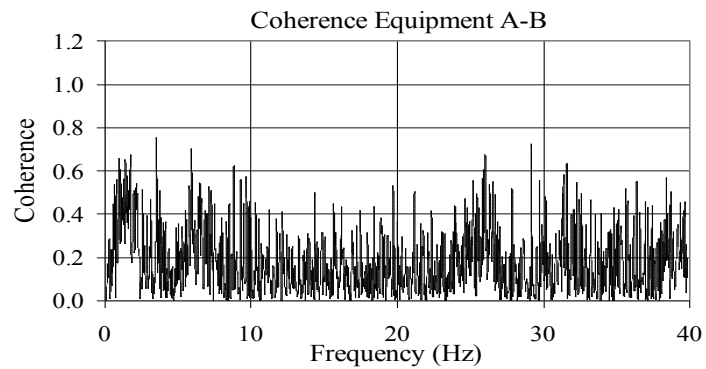
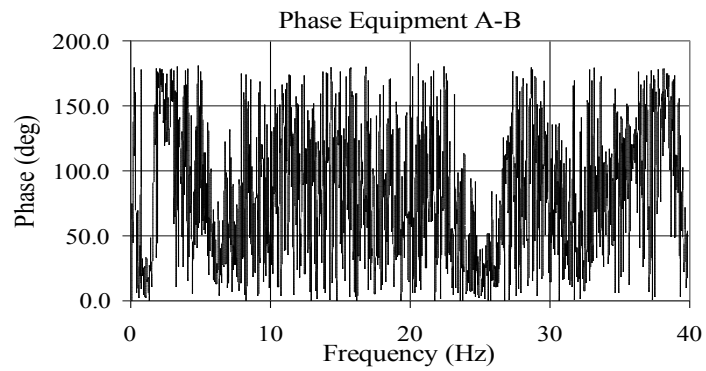
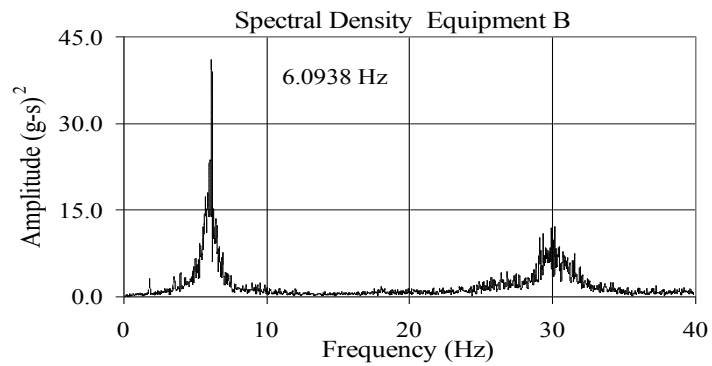
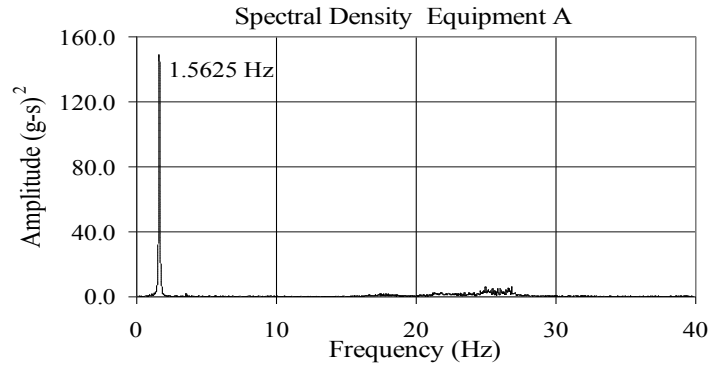




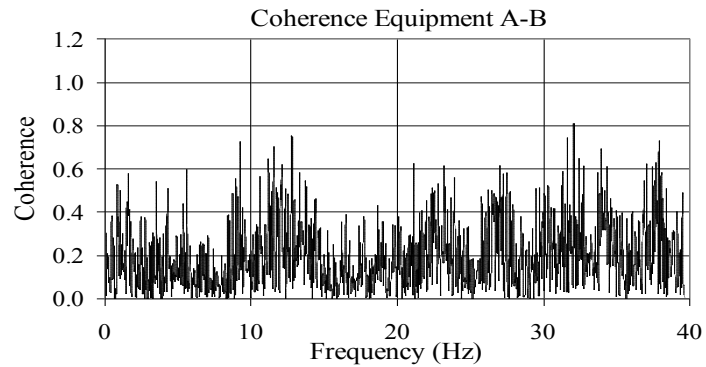
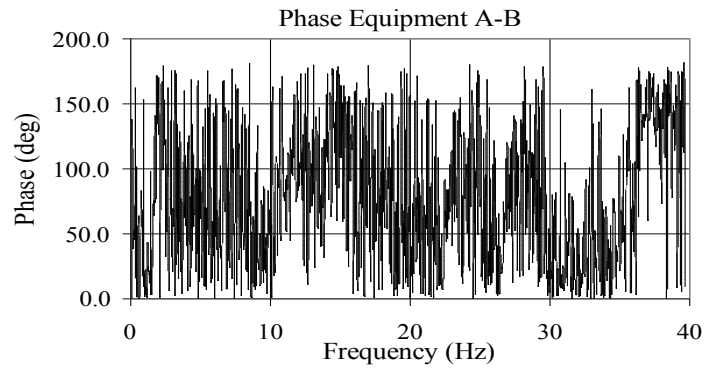
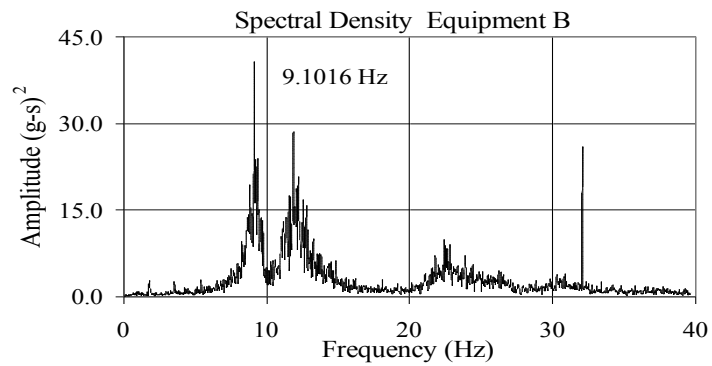
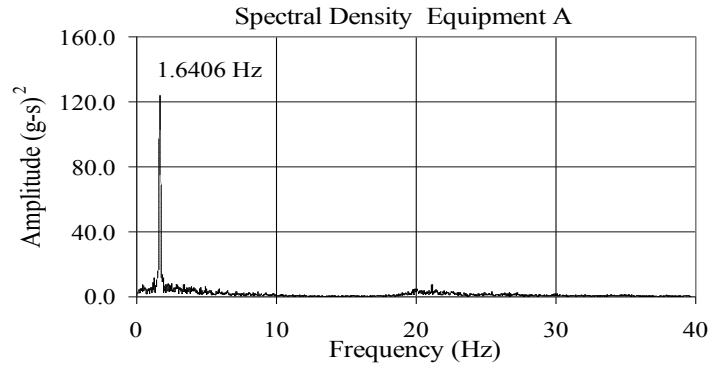
**TEST FB-103**  
**EQUIPMENT COMBINATION 5**  
**1113 MCM, 2% SLACKNESS**



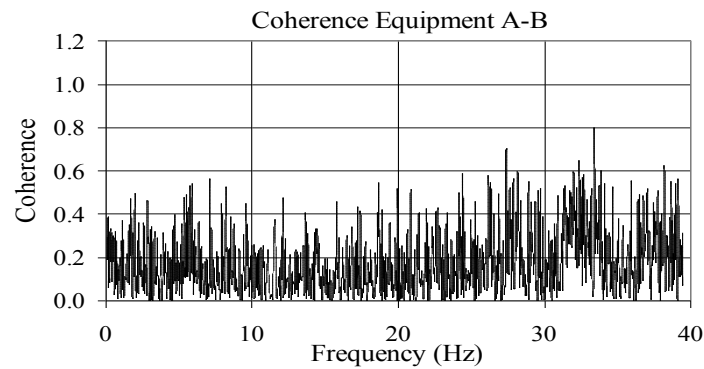
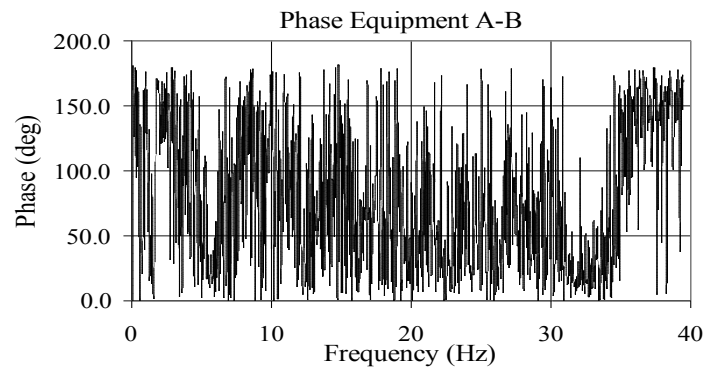
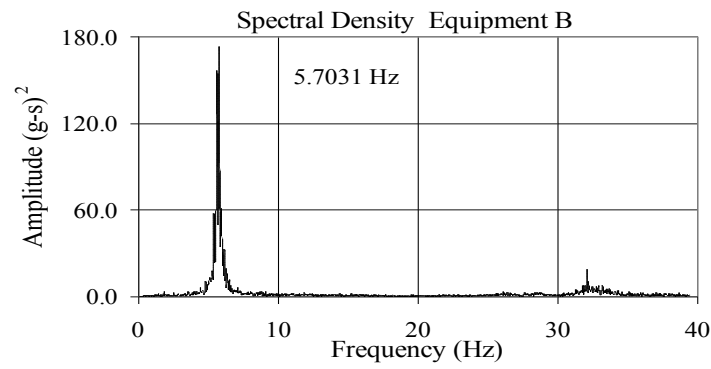
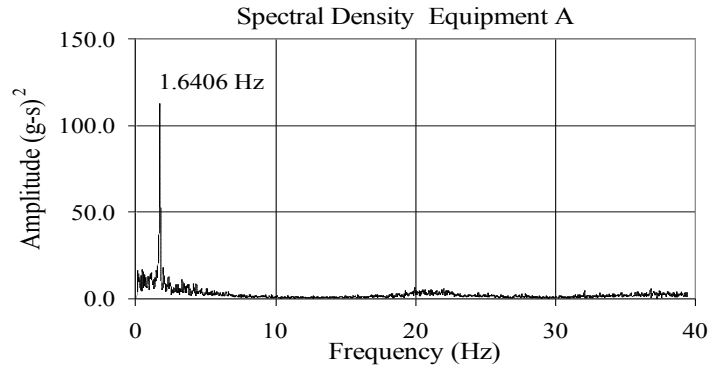
**TEST FB-109**  
**EQUIPMENT COMBINATION 2**  
**2300 MCM, 2% SLACKNESS**



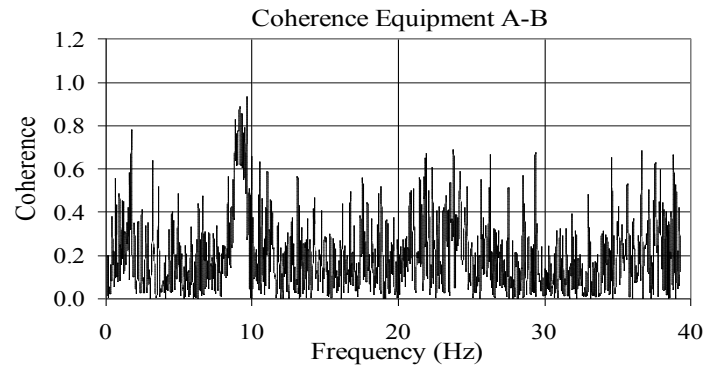
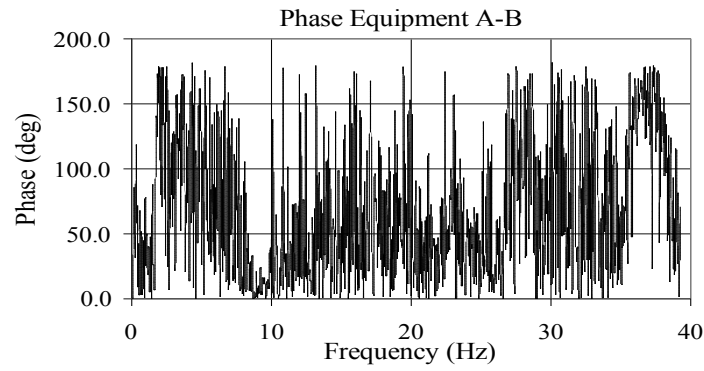
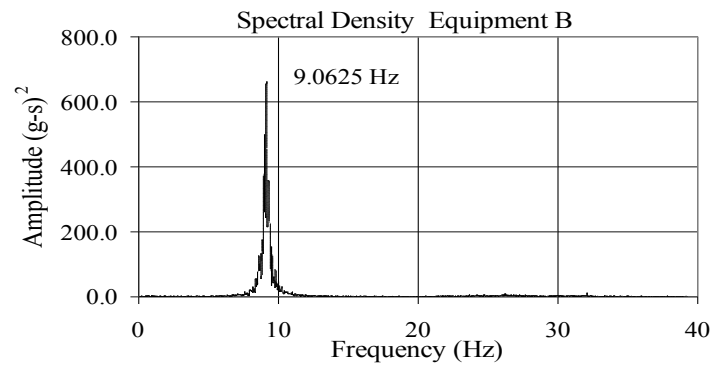
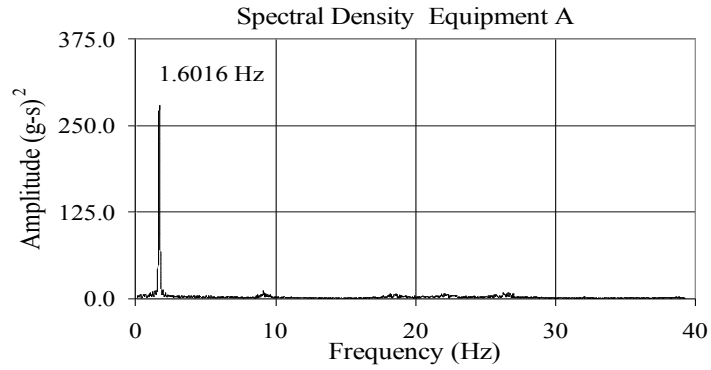
**TEST FB-116**  
**EQUIPMENT COMBINATION 5**  
**2300 MCM, 2% SLACKNESS**



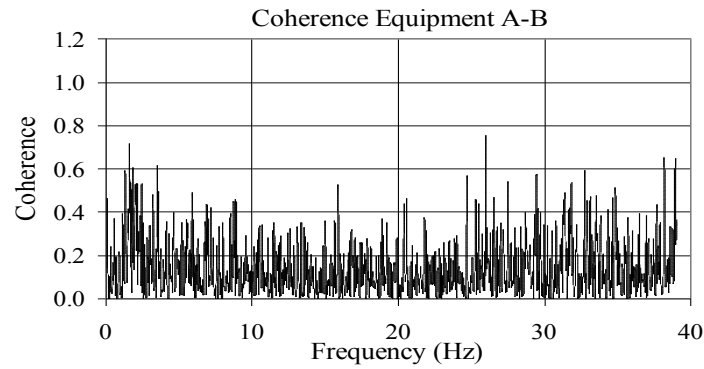
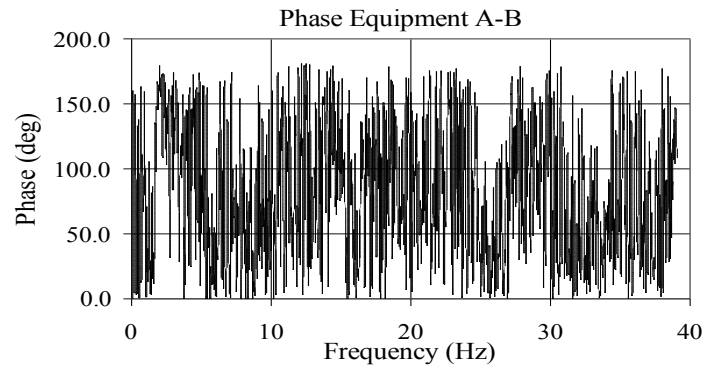
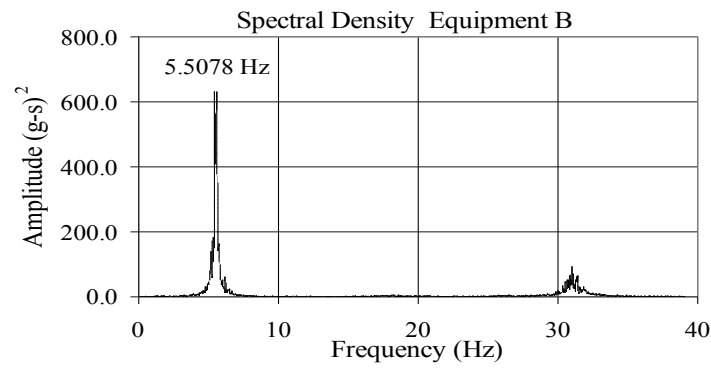
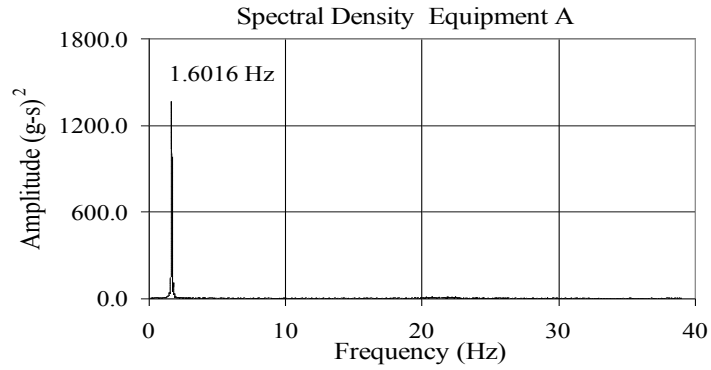
**TEST FB-122**  
**EQUIPMENT COMBINATION 2**  
**LUPINE, 2% SLACKNESS**



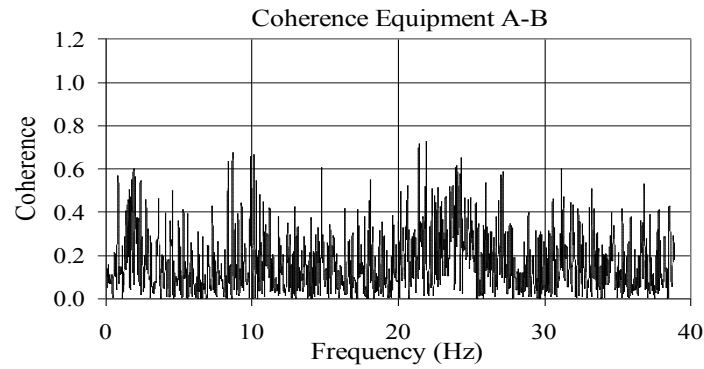
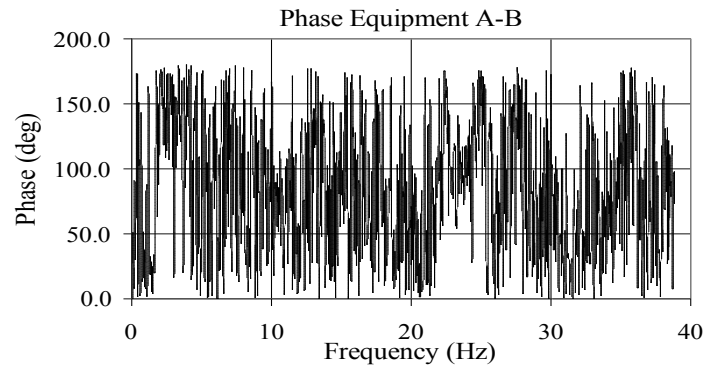
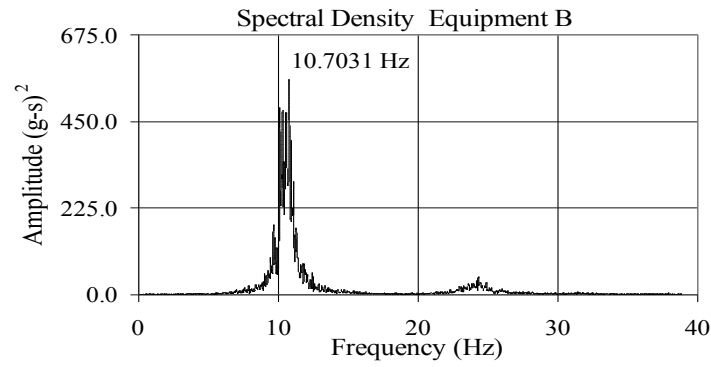
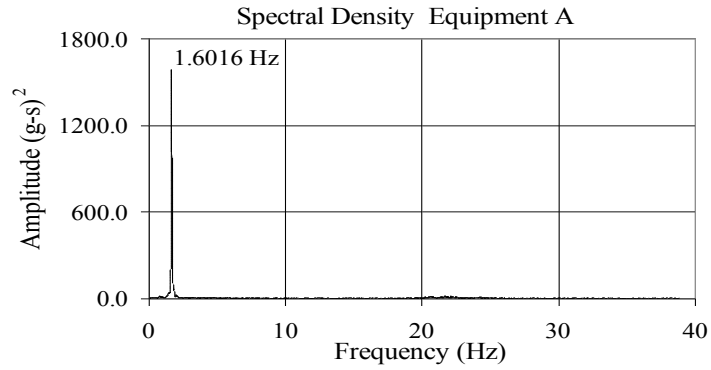
**TEST FB-129**  
**EQUIPMENT COMBINATION 5**  
**LUPINE, 2% SLACKNESS**



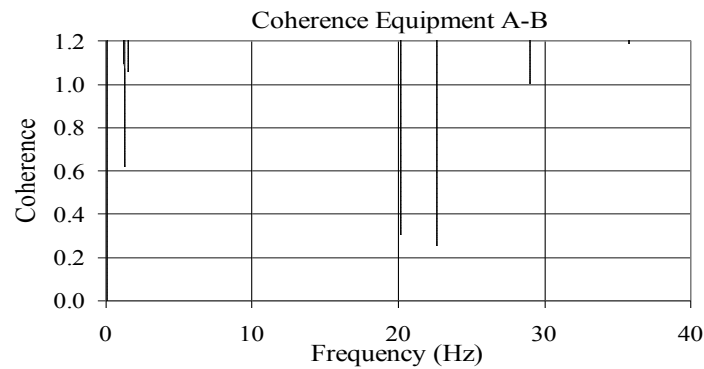
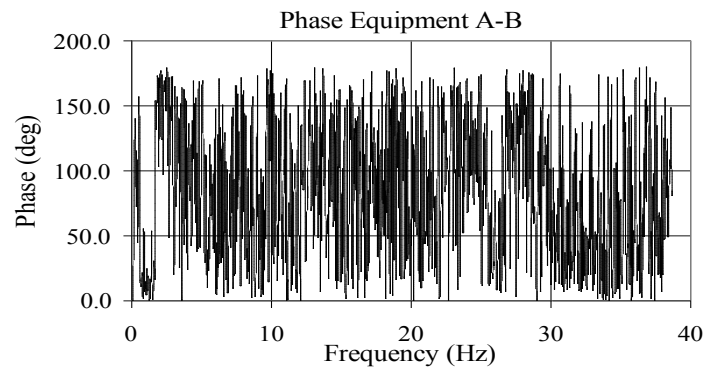
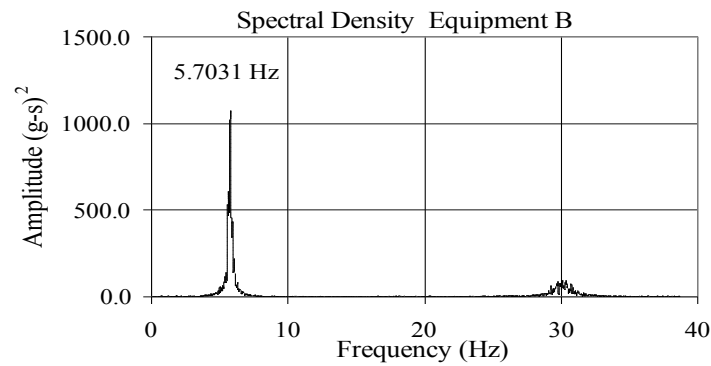
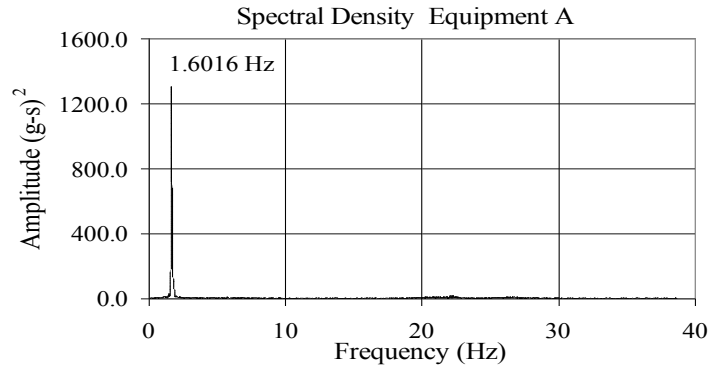
**TEST FB-135**  
**EQUIPMENT COMBINATION 2**  
**LUPINE, 5% SLACKNESS**



**TEST FB-142**  
**EQUIPMENT COMBINATION 5**  
**LUPINE, 5% SLACKNESS**

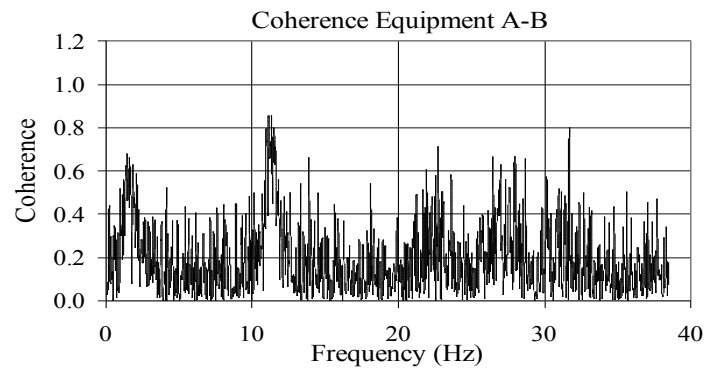
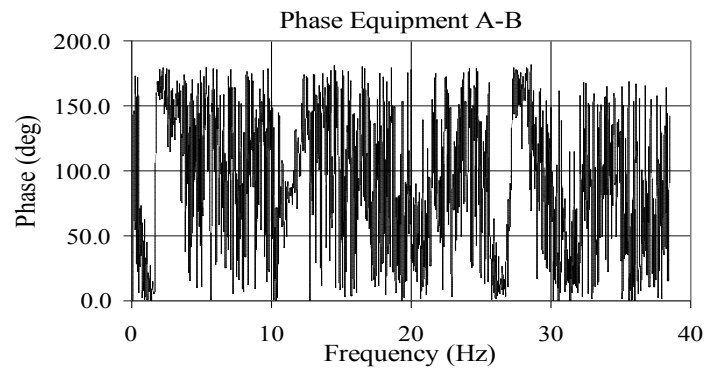
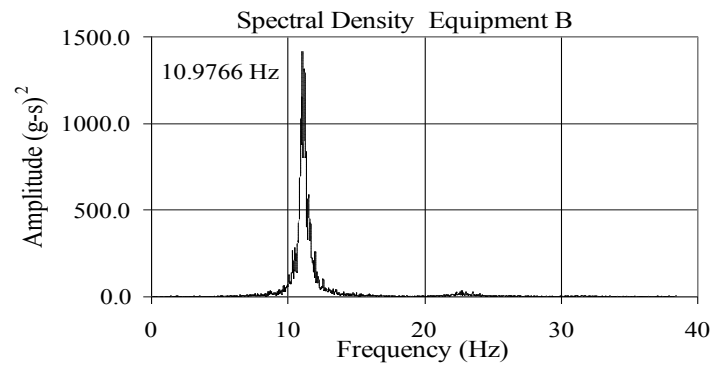
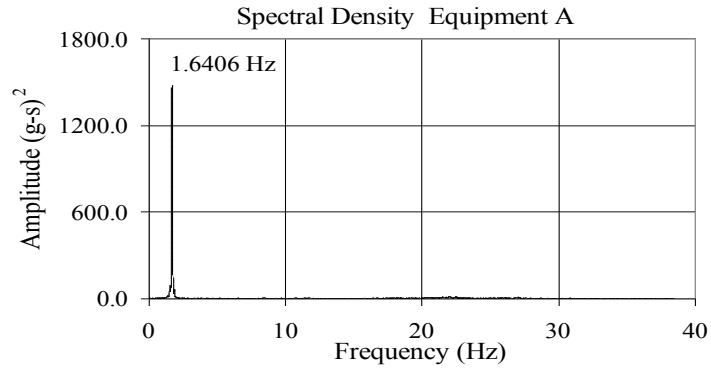


**TEST FB-148**  
**EQUIPMENT COMBINATION 2**  
**LUPINE, 10% SLACKNESS**





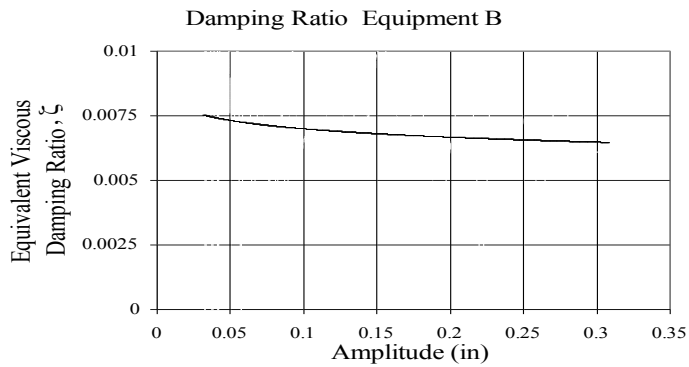
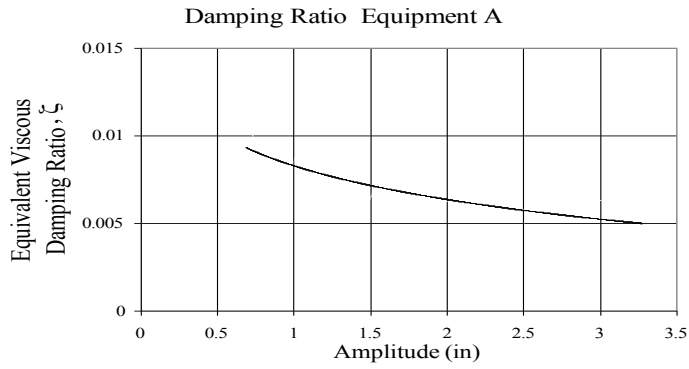
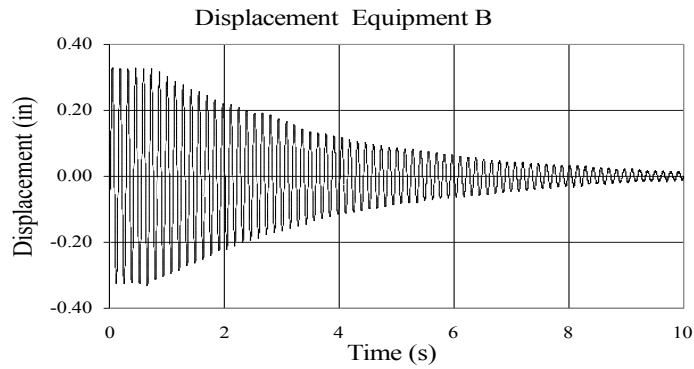
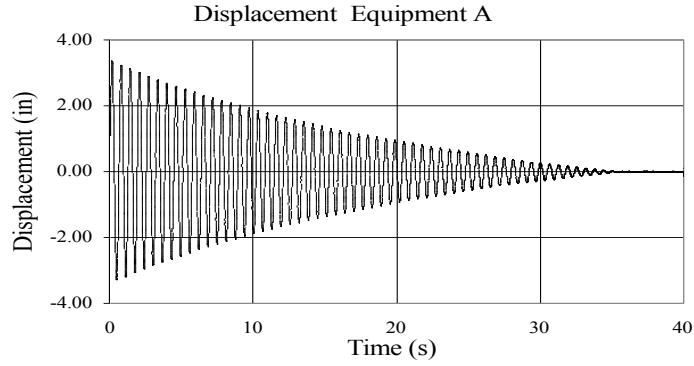
**TEST FB-155**  
**EQUIPMENT COMBINATION 5**  
**LUPINE, 10% SLACKNESS**



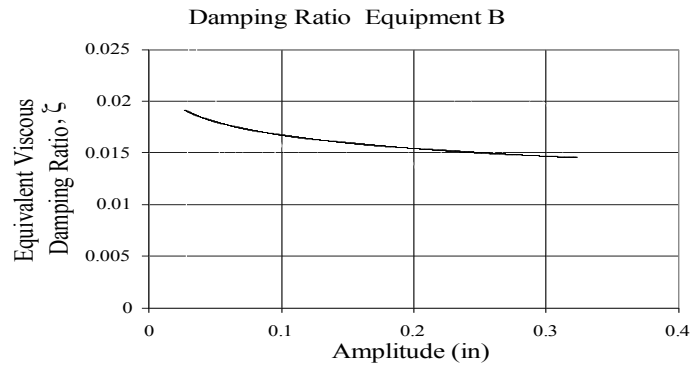
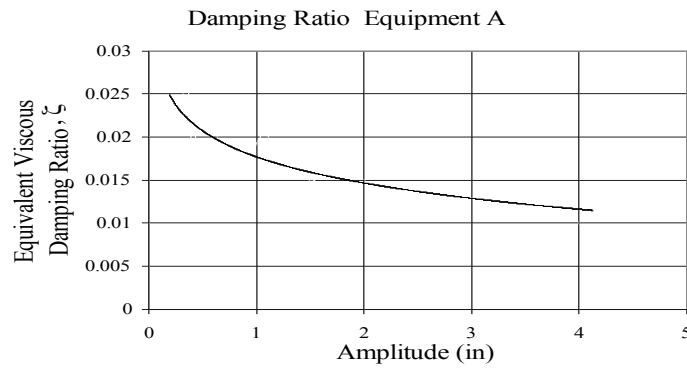
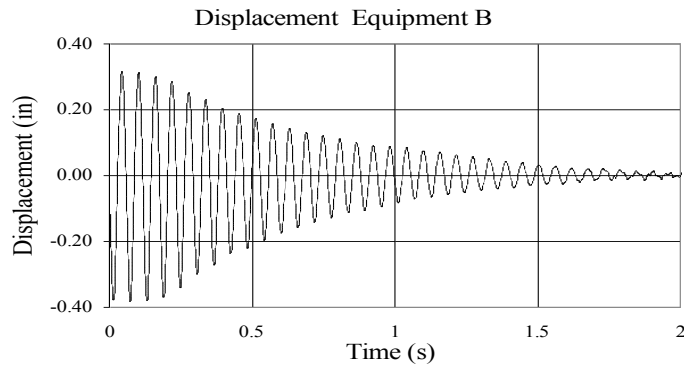
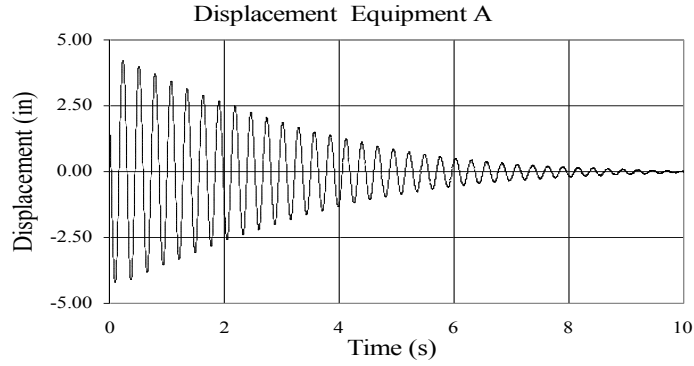
**APPENDIX D**

**RESULTS OF DAMPING EVALUATION TESTS**

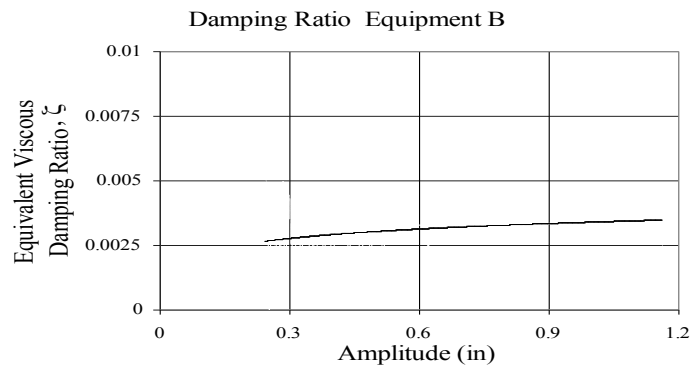
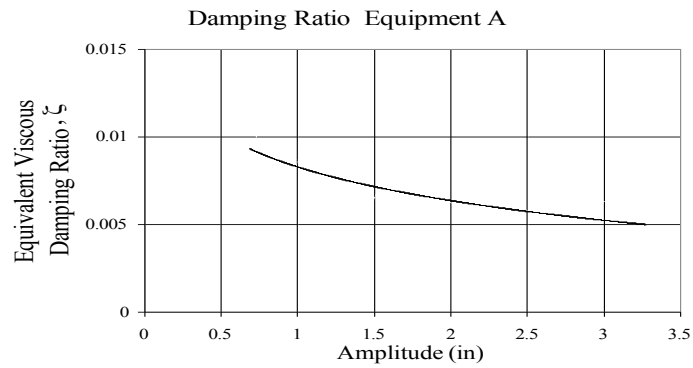
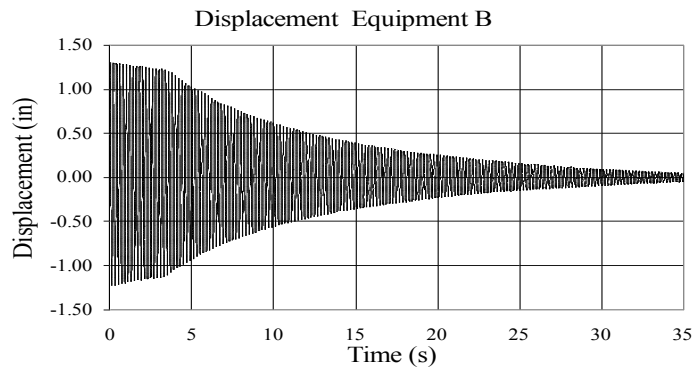
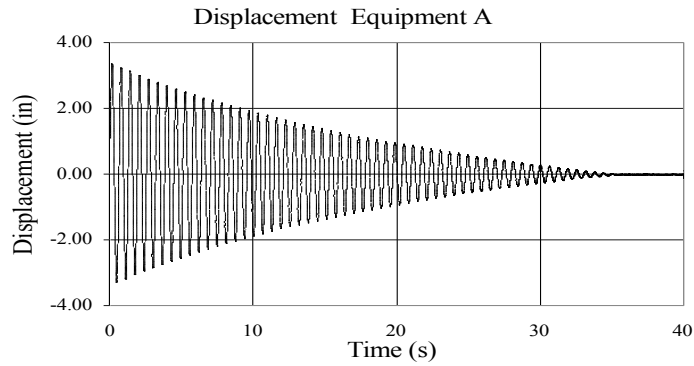
# TEST FB-2 AND TEST FB-3 EQUIPMENT COMBINATION 4 UNCOUPLED



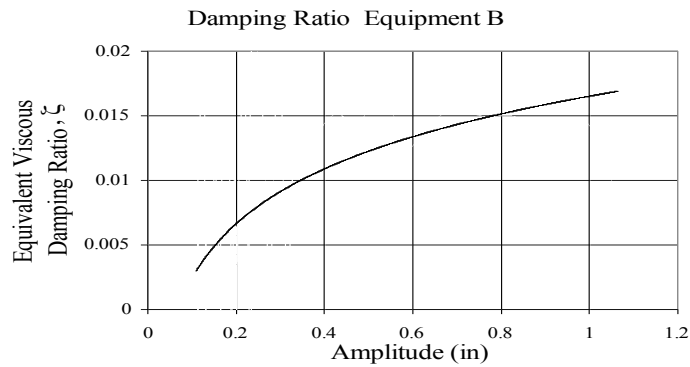
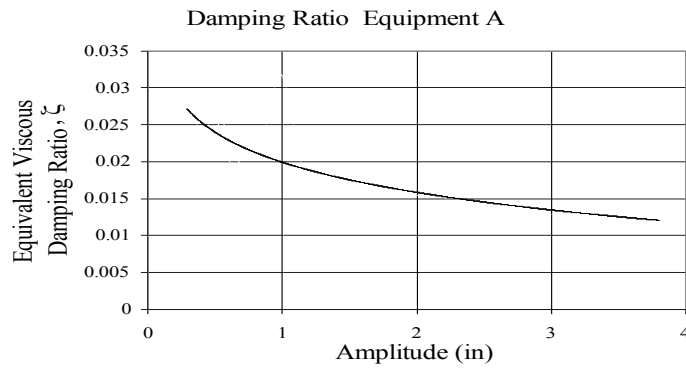
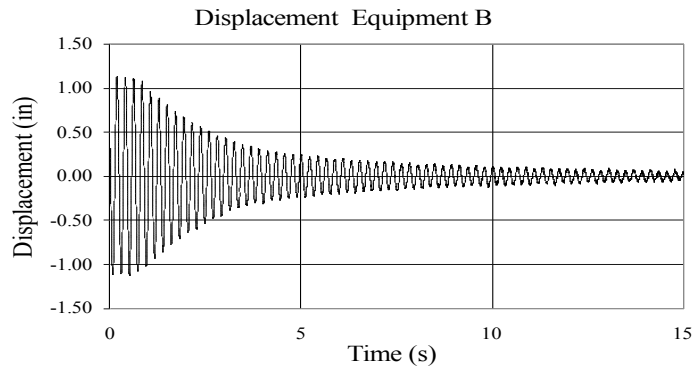
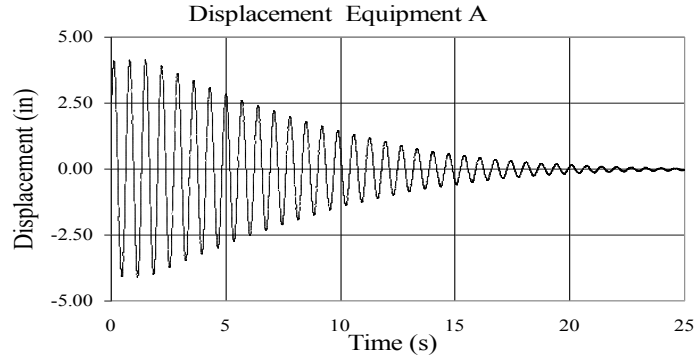
# TEST FB-5A AND TEST FB-5B EQUIPMENT COMBINATION 4 1113 MCM, 10% SLACKNESS



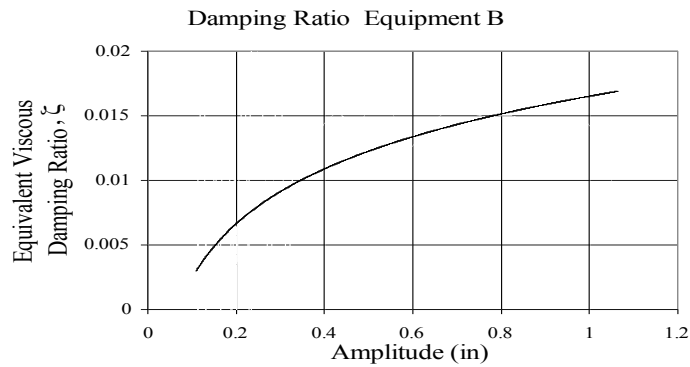
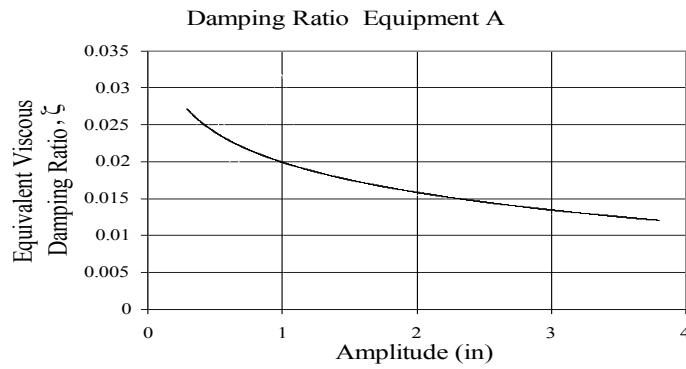
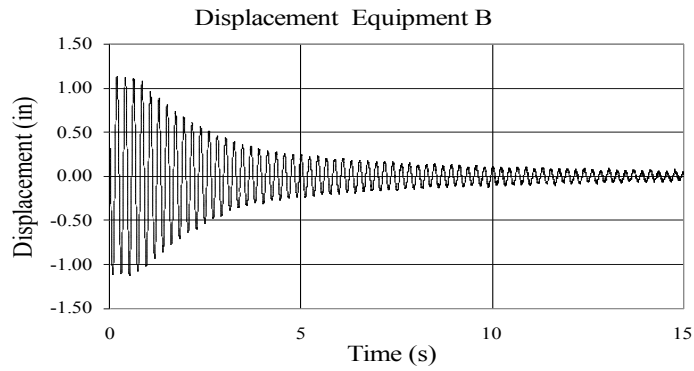
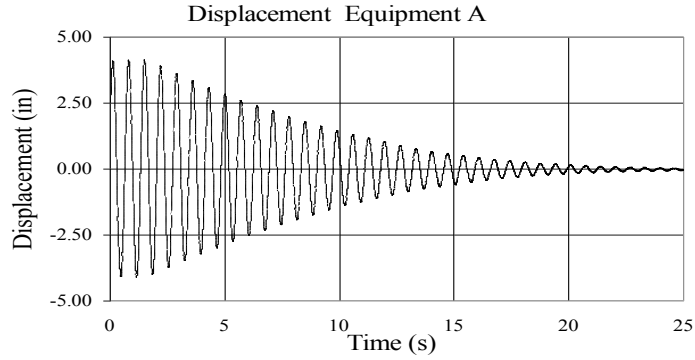
# TEST FB-15A AND TEST FB-15B EQUIPMENT COMBINATION 3, UNCOUPLED



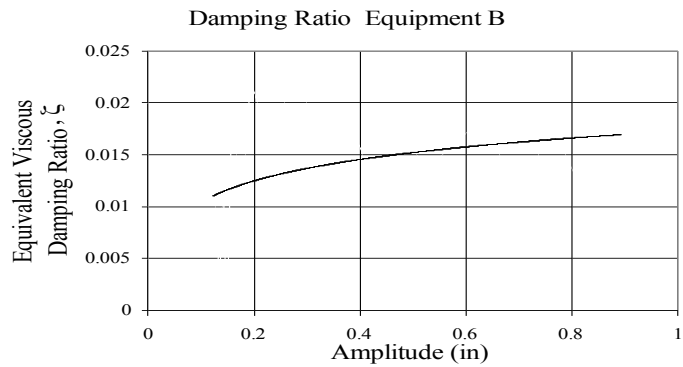
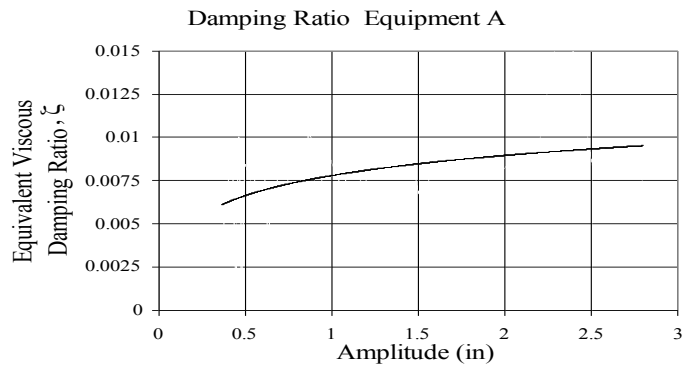
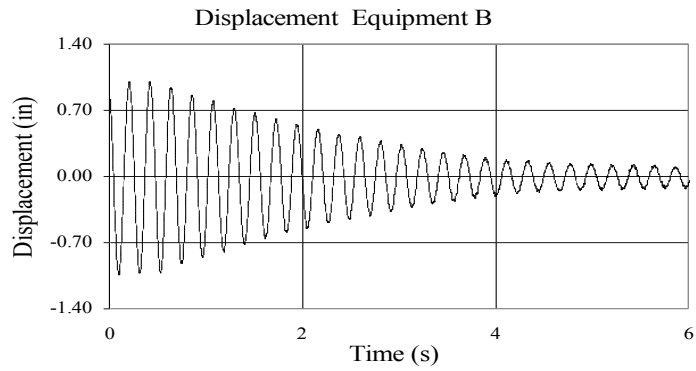
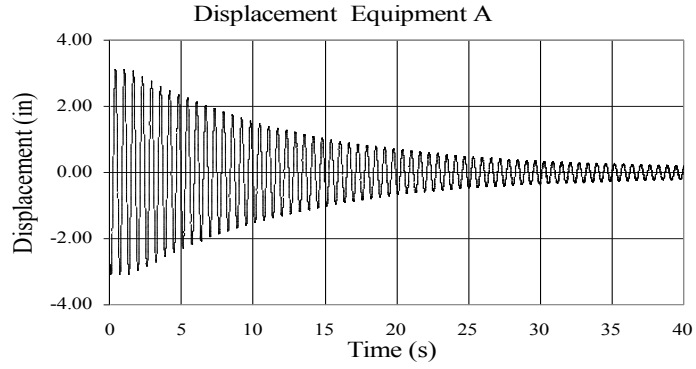
**TEST FB-17A AND TEST FB-17B  
EQUIPMENT COMBINATION 3  
1113 MCM, 10% SLACKNESS**



**TEST FB-17A AND TEST FB-17B  
EQUIPMENT COMBINATION 3  
1113 MCM, 10% SLACKNESS**

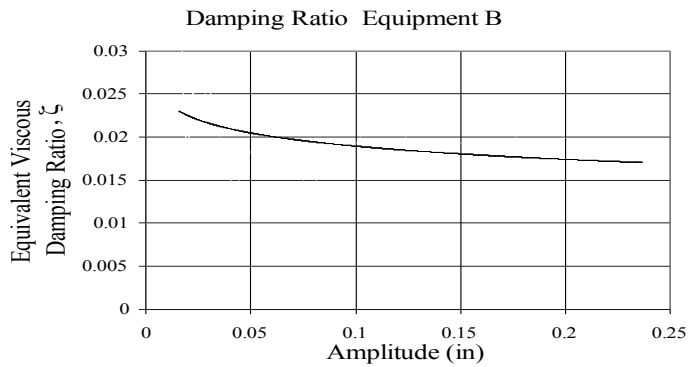
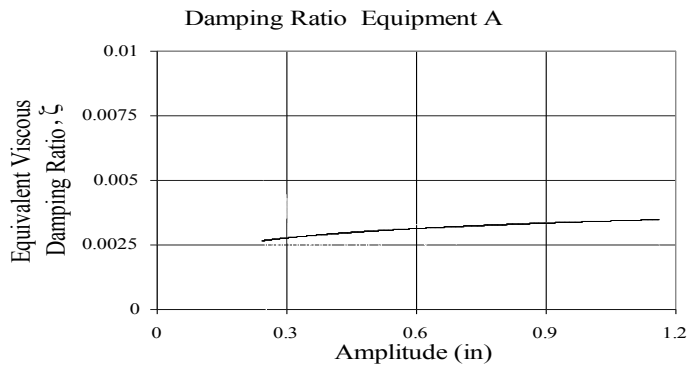
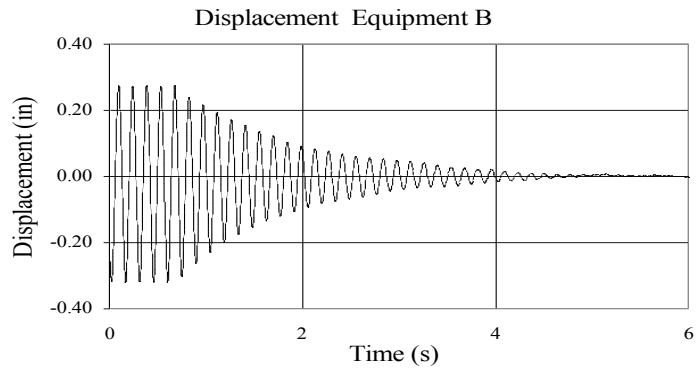
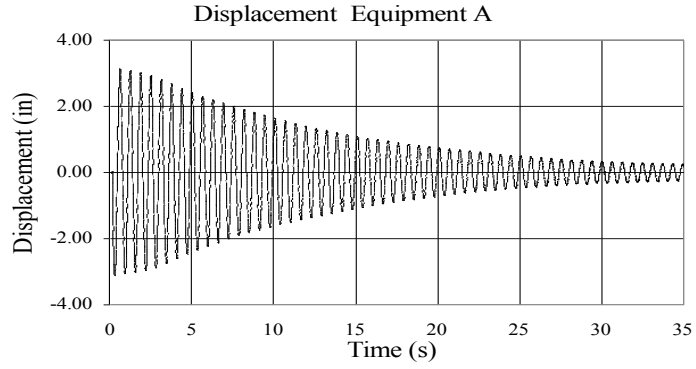


# TEST FB-30A AND TEST FB-30B EQUIPMENT COMBINATION 1 1113 MCM, 10% SLACKNESS

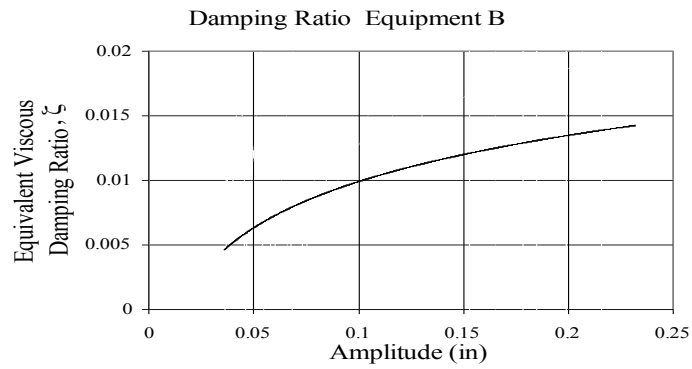
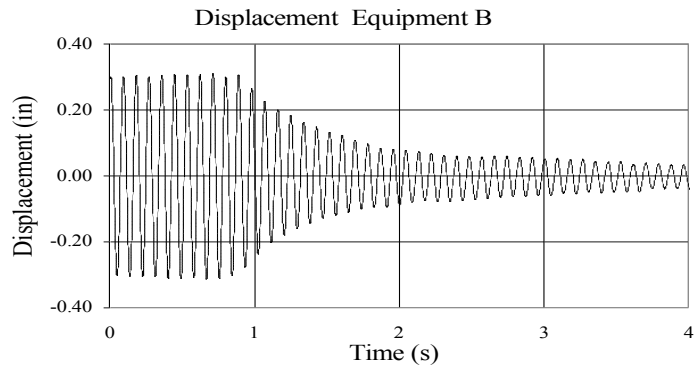
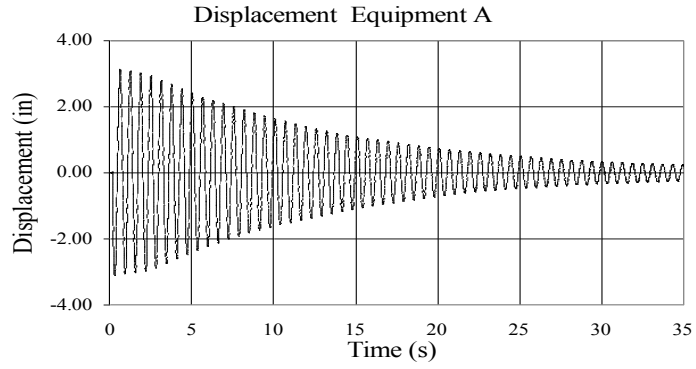




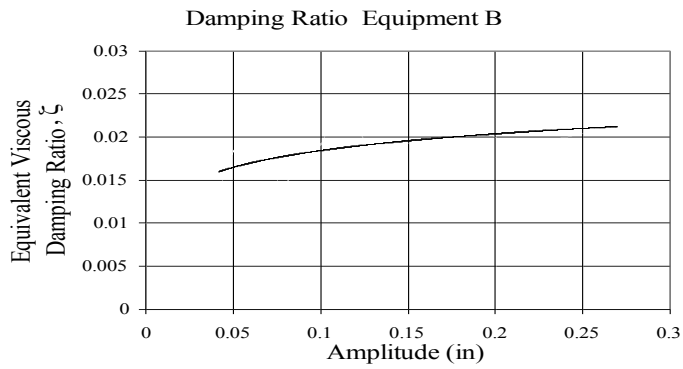
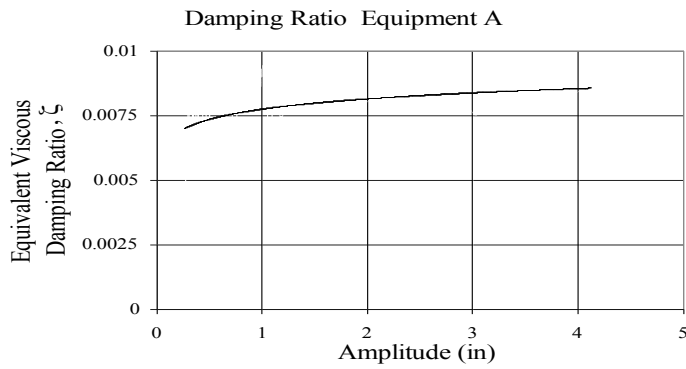
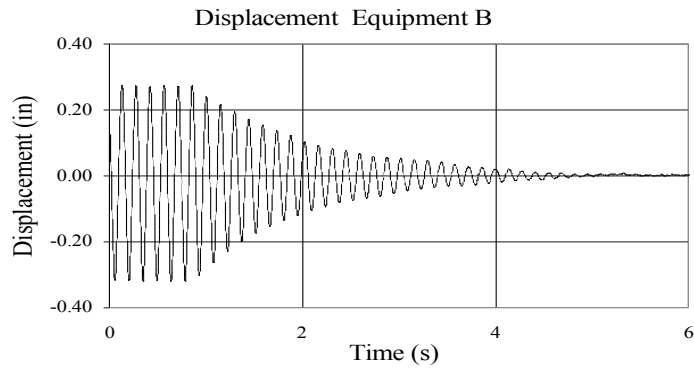
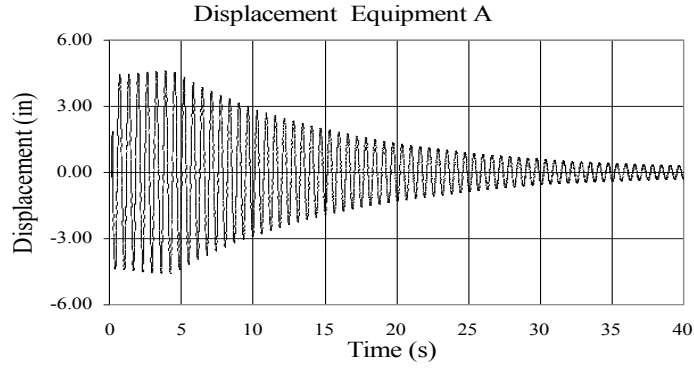
# TEST FB-34A AND TEST FB-34B EQUIPMENT COMBINATION 2 1113 MCM, 10% SLACKNESS



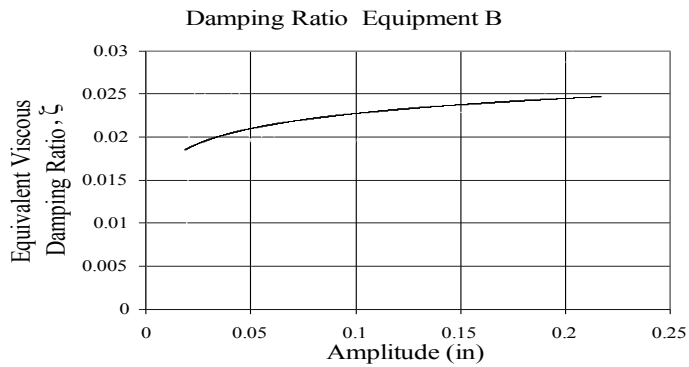
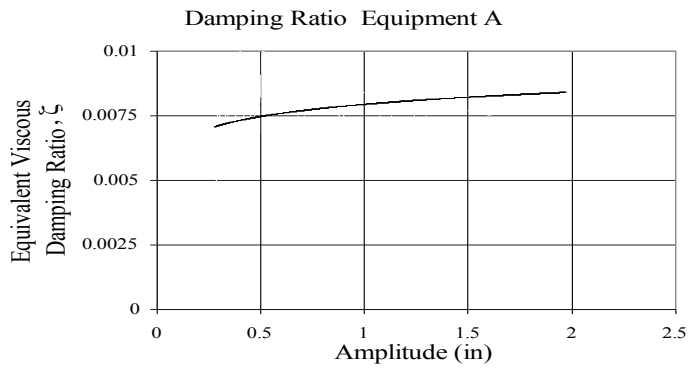
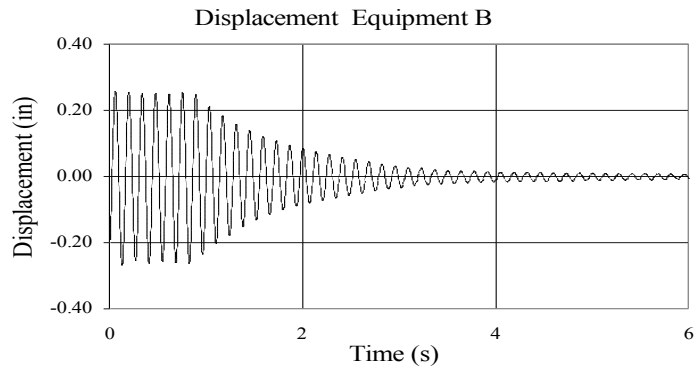
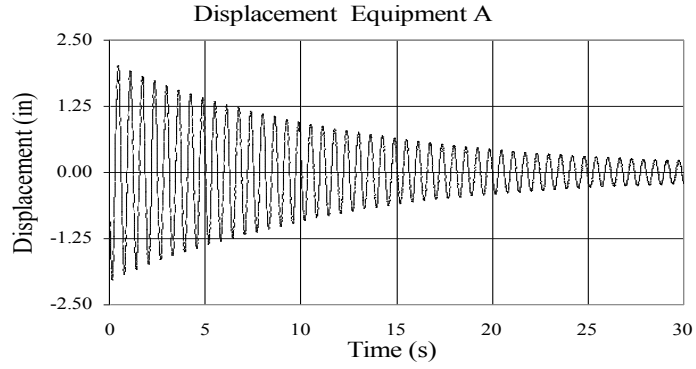
# TEST FB-45 AND TEST FB-46 EQUIPMENT COMBINATION 5 UNCOUPLED



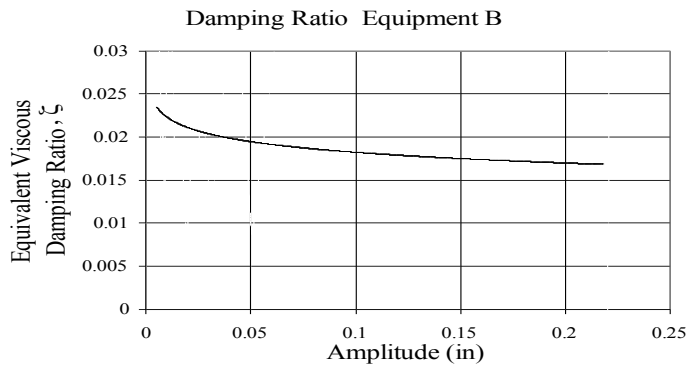
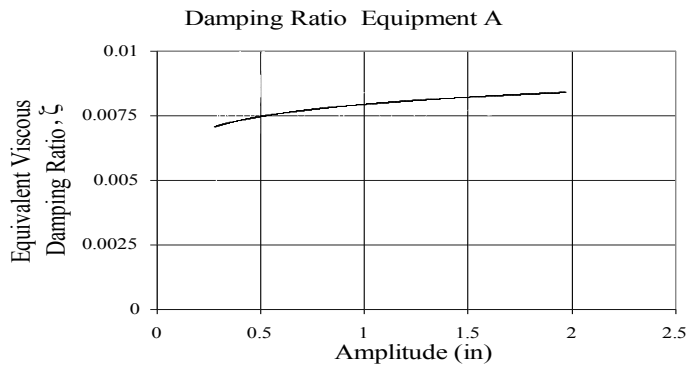
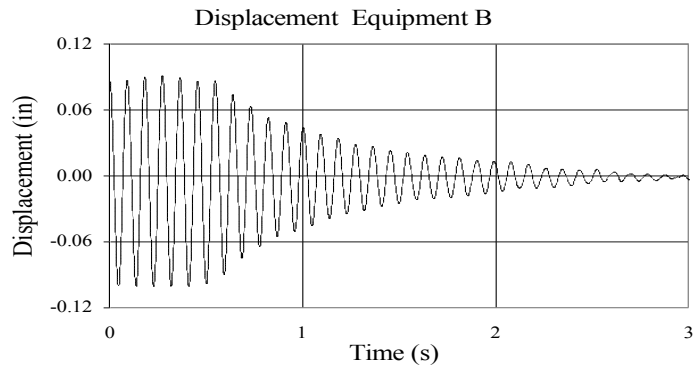
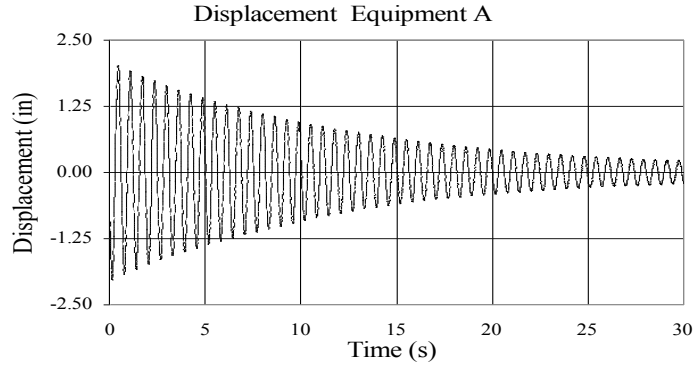
**TEST FB-48A AND TEST FB-48B  
EQUIPMENT COMBINATION 5  
1113 MCM, 10% SLACKNESS**



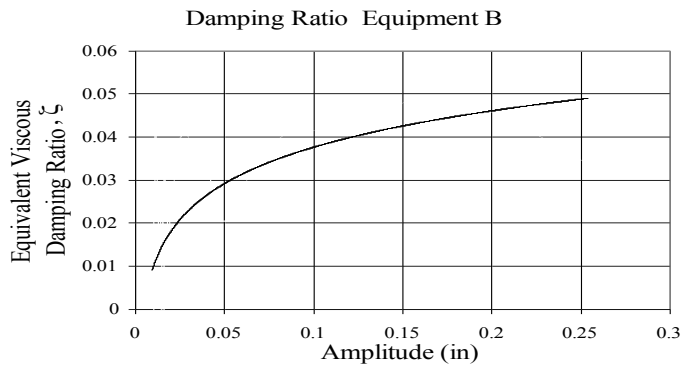
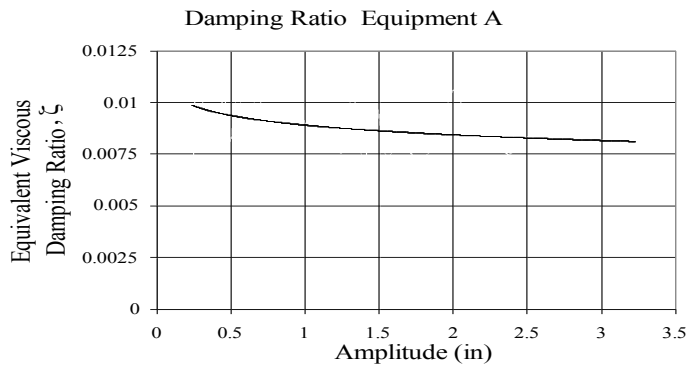
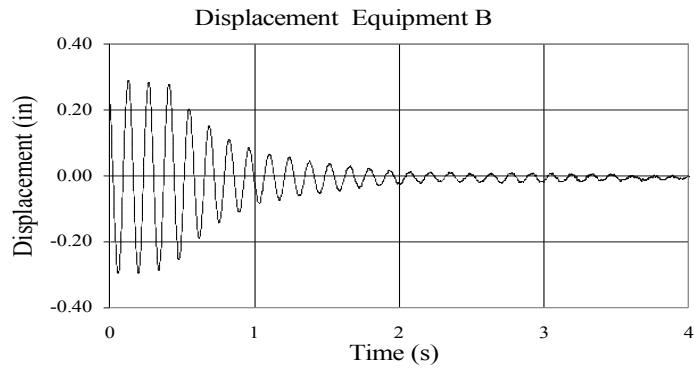
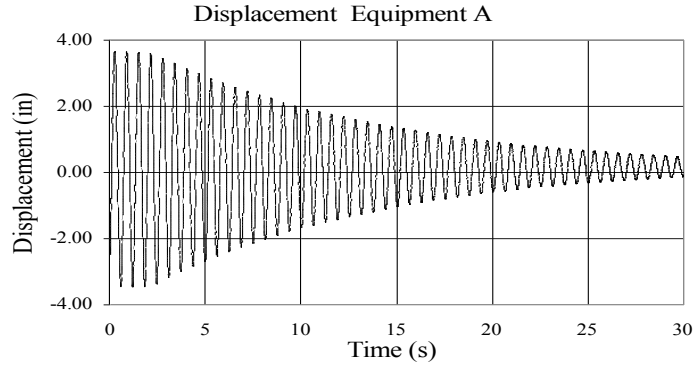
# TEST FB-58A AND TEST FB-58B EQUIPMENT COMBINATION 2 2300 MCM, 10% SLACKNESS



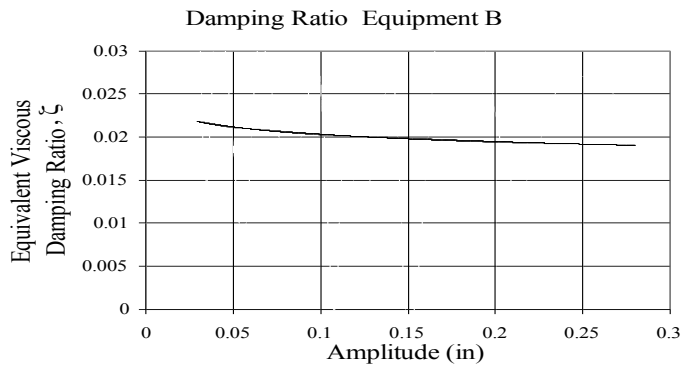
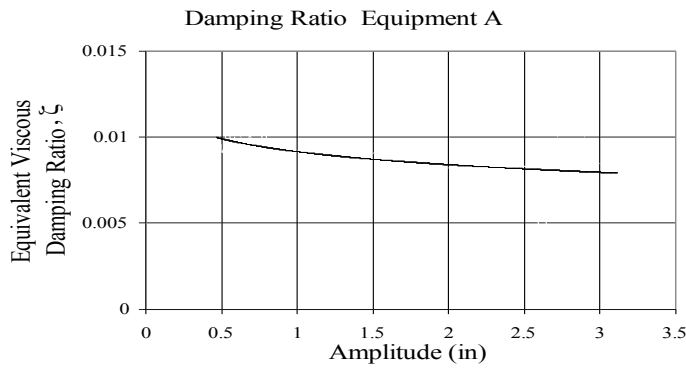
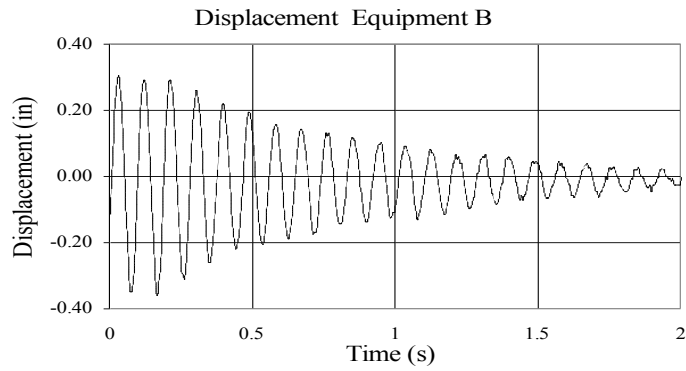
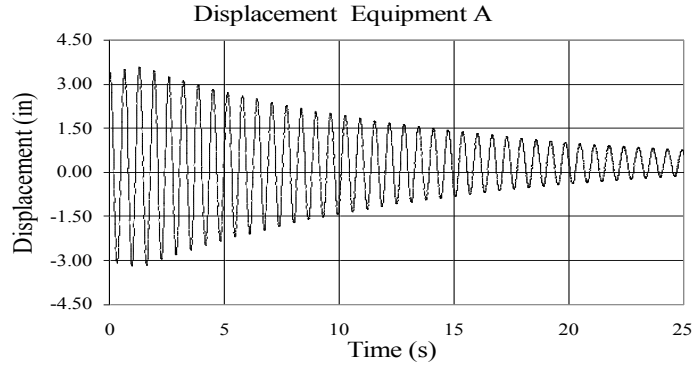
# TEST FB-65A AND TEST FB-65B EQUIPMENT COMBINATION 5 2300 MCM, 10% SLACKNESS



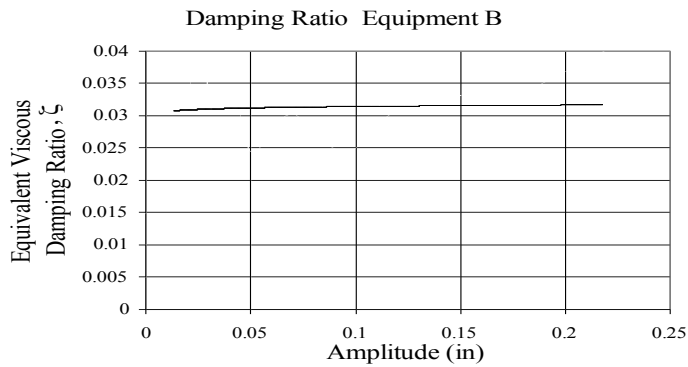
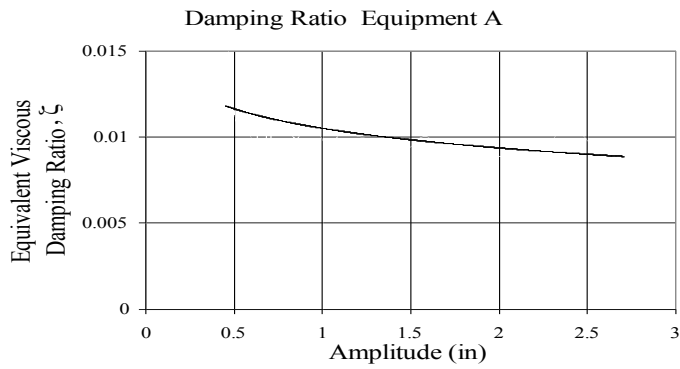
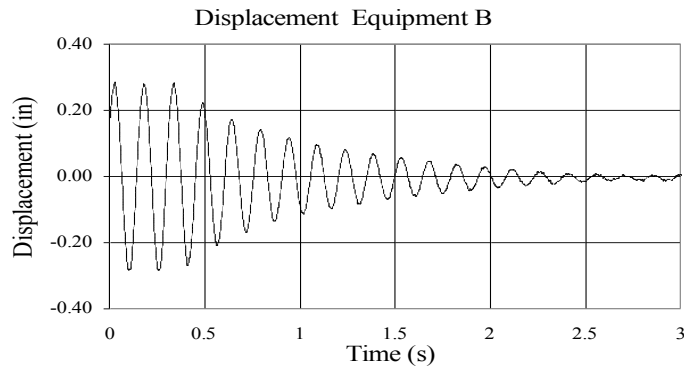
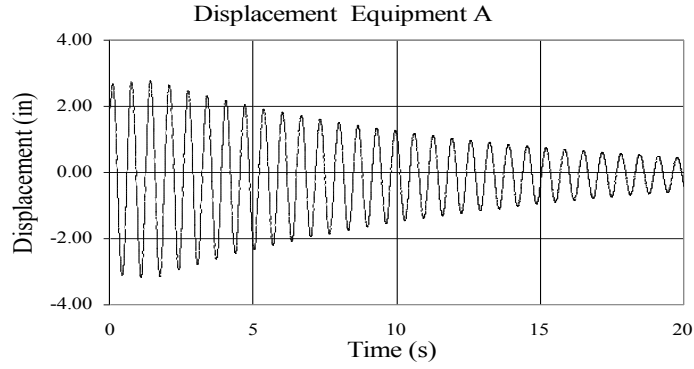
**TEST FB-71A AND TEST FB-71B  
EQUIPMENT COMBINATION 2  
2300 MCM, 5% SLACKNESS**



**TEST FB-78A AND TEST FB-78B  
EQUIPMENT COMBINATION 5  
2300 MCM, 5% SLACKNESS**

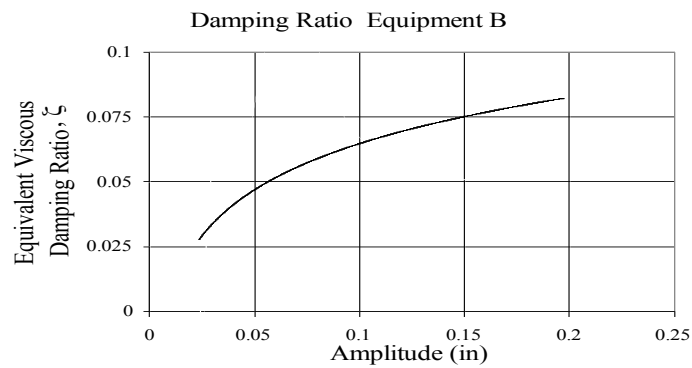
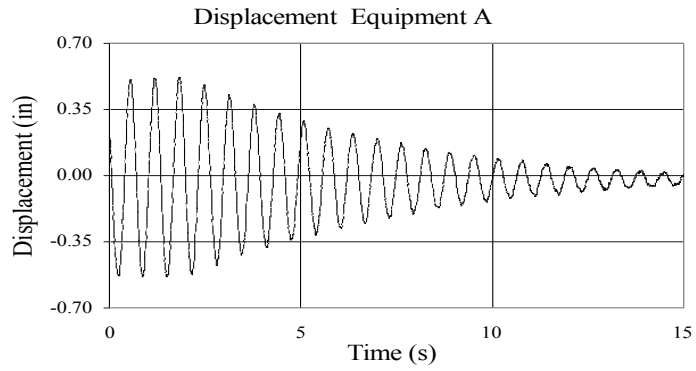


**TEST FB-84A AND TEST FB-84B  
EQUIPMENT COMBINATION 2  
1113 MCM, 5% SLACKNESS**

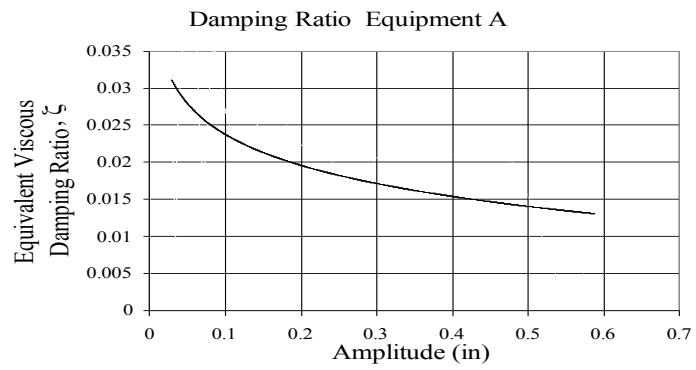
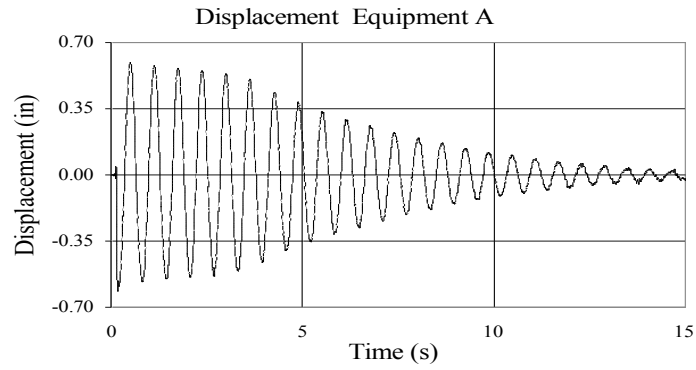




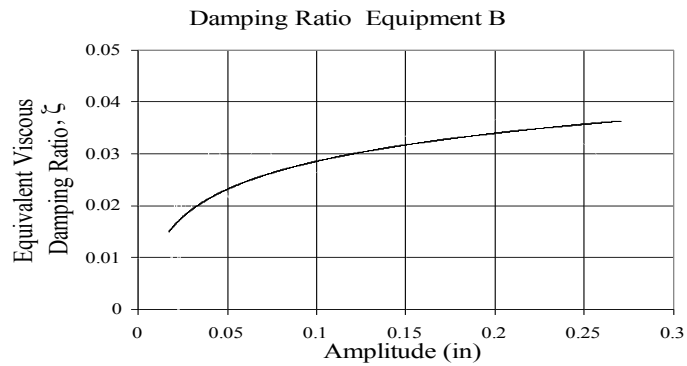
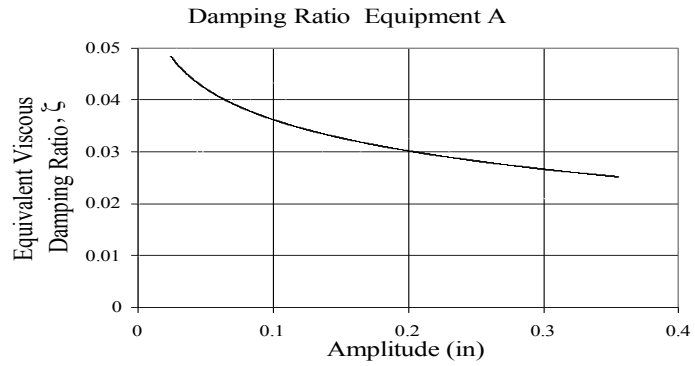
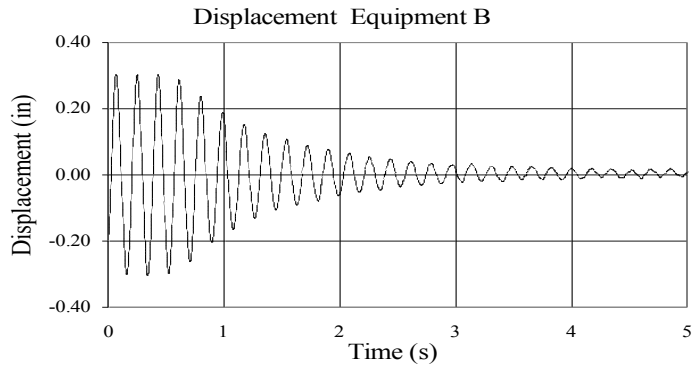
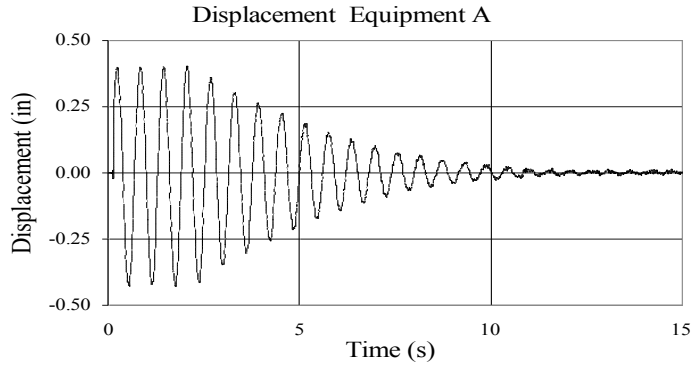
**TEST FB-110A AND TEST FB-110B  
EQUIPMENT COMBINATION 2  
2300 MCM, 2% SLACKNESS**



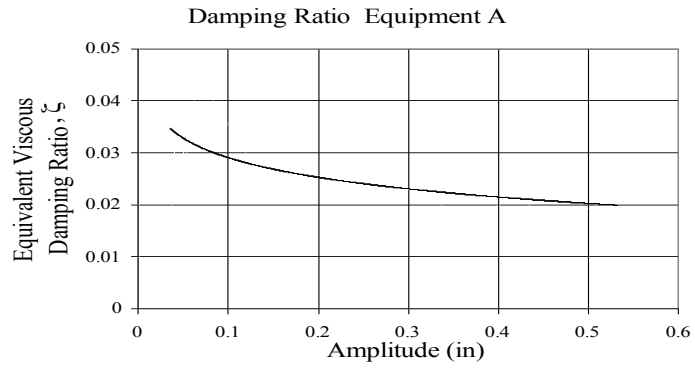
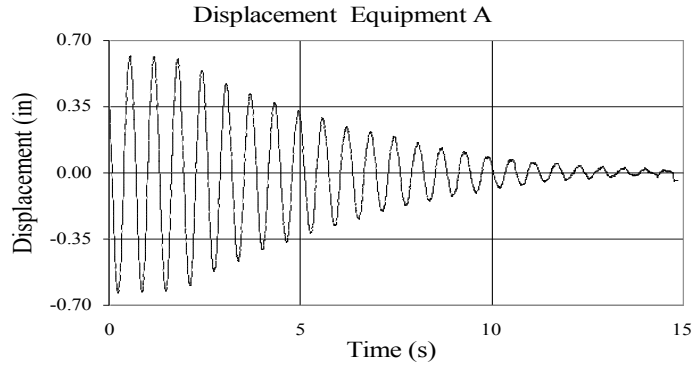
**TEST FB-117A AND TEST FB-117B  
EQUIPMENT COMBINATION 5  
2300 MCM, 2% SLACKNESS**



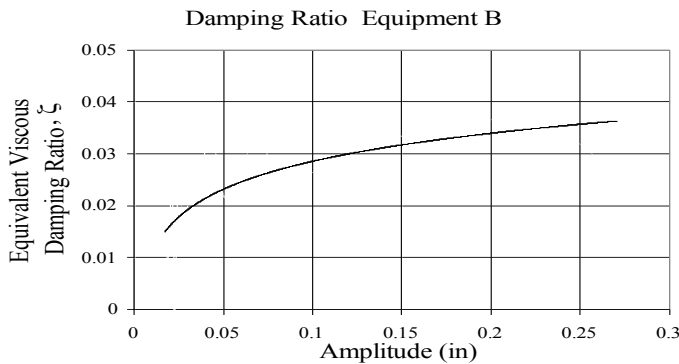
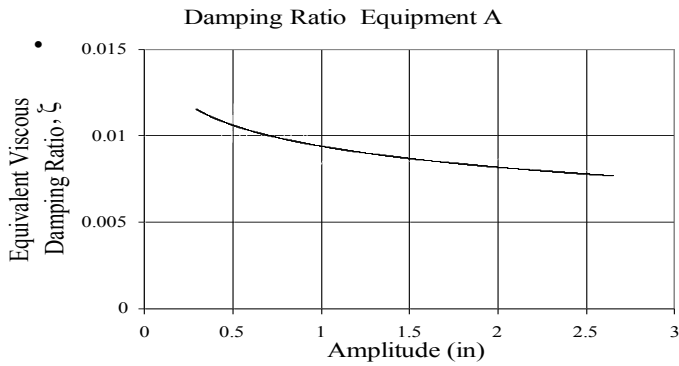
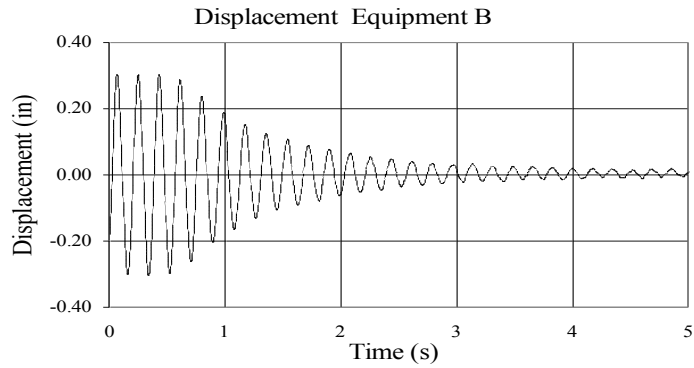
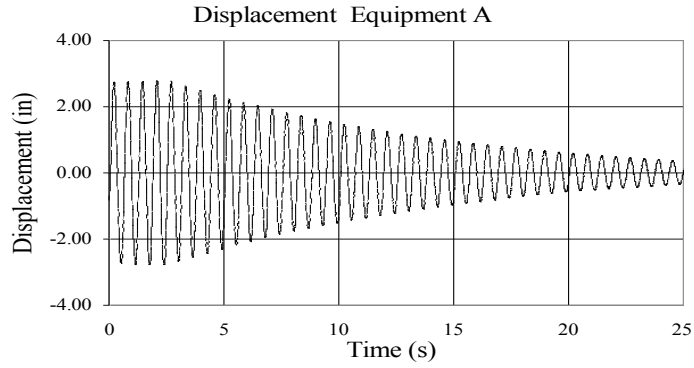
**TEST FB-123A AND TEST FB-123B  
EQUIPMENT COMBINATION 2  
LUPINE, 2% SLACKNESS**



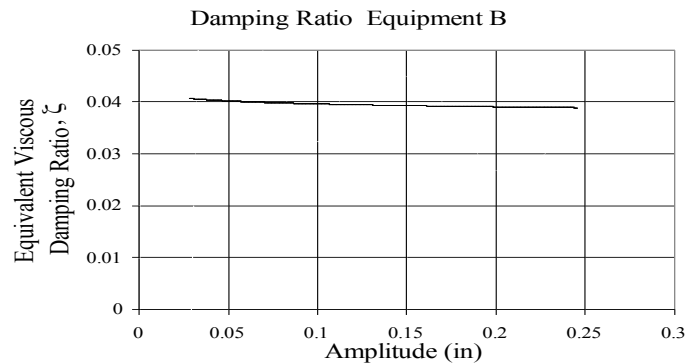
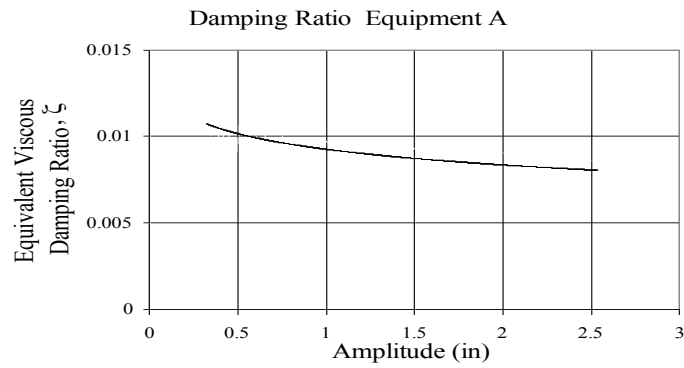
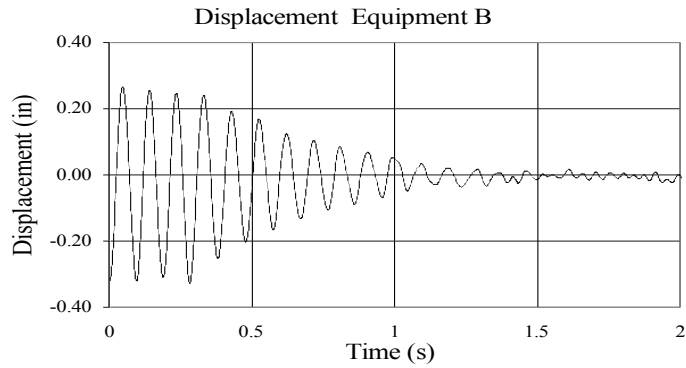
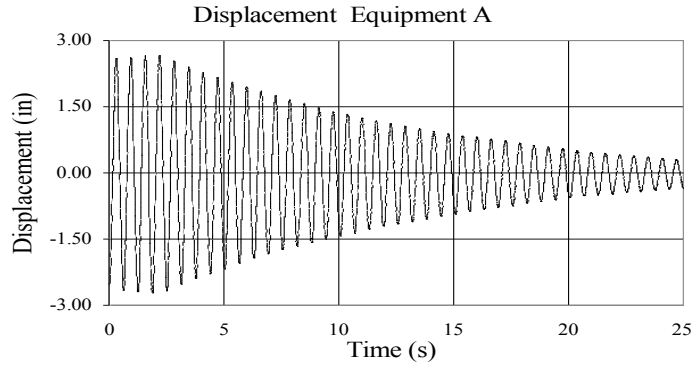
**TEST FB-130A**  
**EQUIPMENT COMBINATION 5**  
**LUPINE, 2% SLACKNESS**



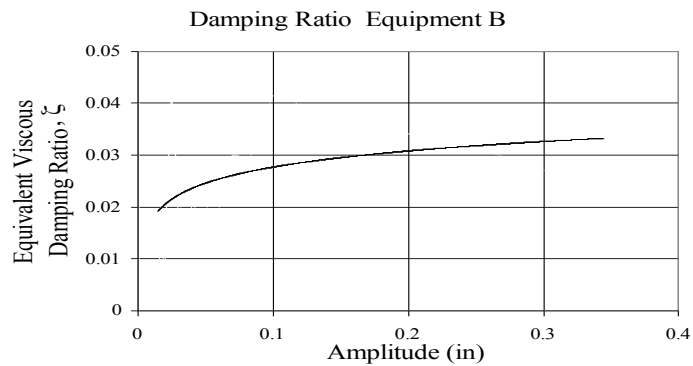
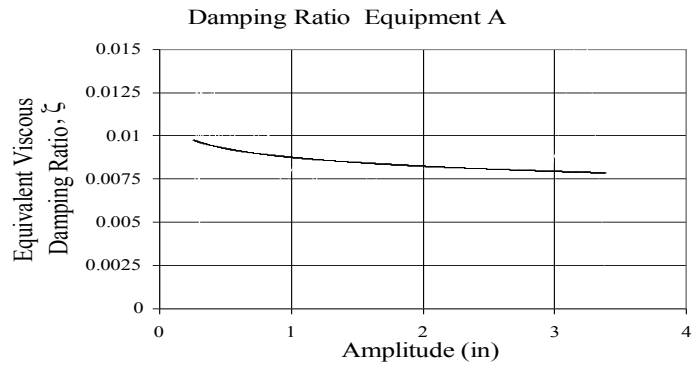
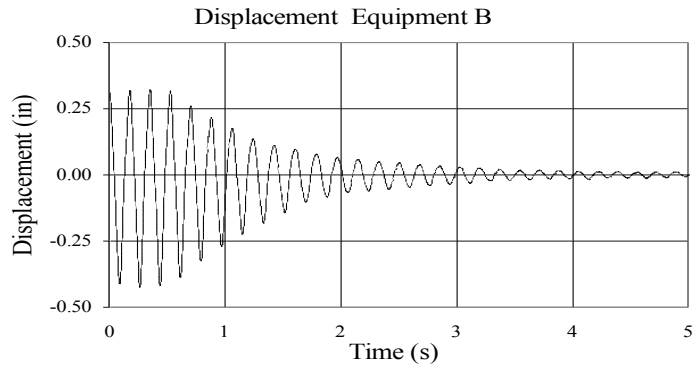
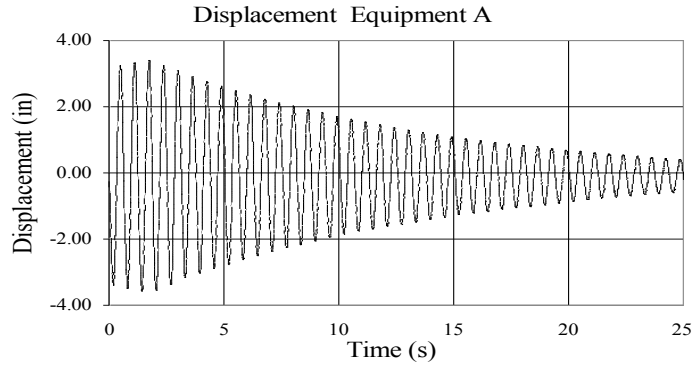
**TEST FB-136A AND TEST FB-136B  
EQUIPMENT COMBINATION 2  
LUPINE, 5% SLACKNESS**



# TEST FB-143A AND TEST FB-143B EQUIPMENT COMBINATION 5 LUPINE, 5% SLACKNESS



**TEST FB-149A AND TEST FB-149B  
EQUIPMENT COMBINATION 2  
LUPINE, 10% SLACKNESS**



**TEST FB-156A AND TEST FB-156B  
EQUIPMENT COMBINATION 5  
LUPINE, 10% SLACKNESS**

