



Toward Better Tall Buildings

Ron Klemencic, P.E.





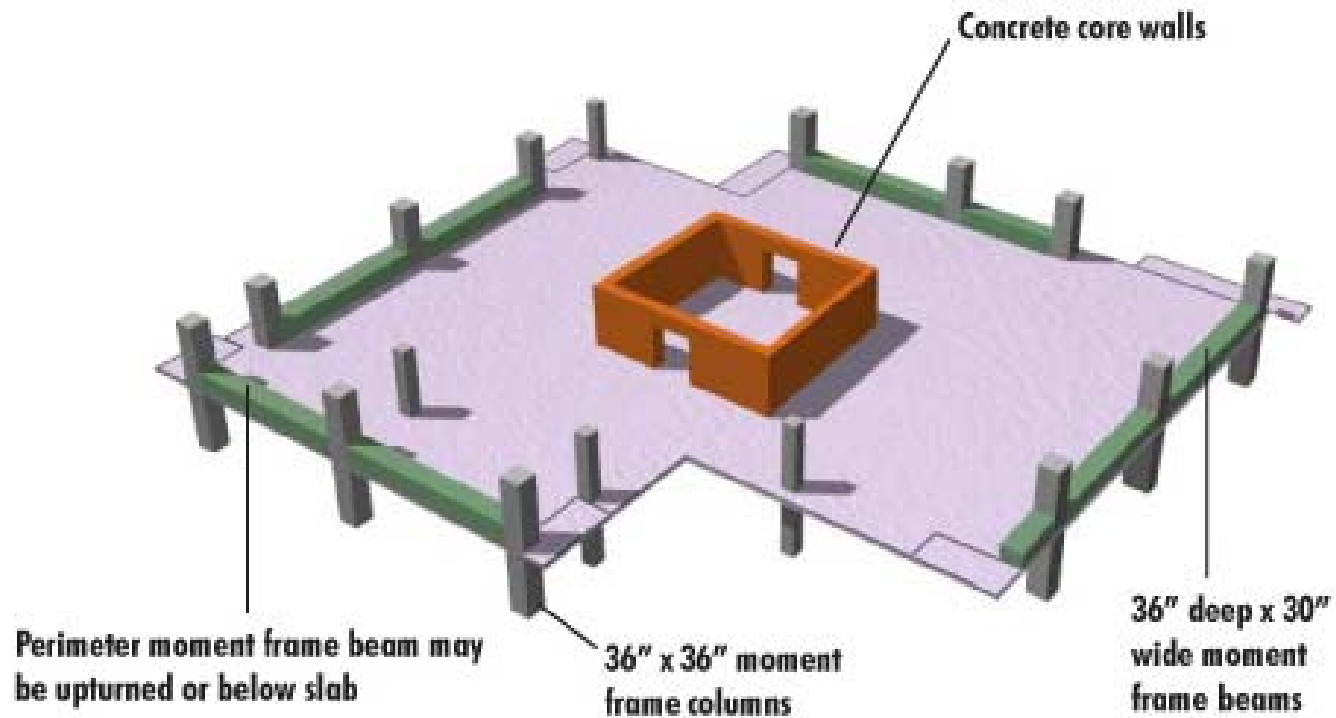


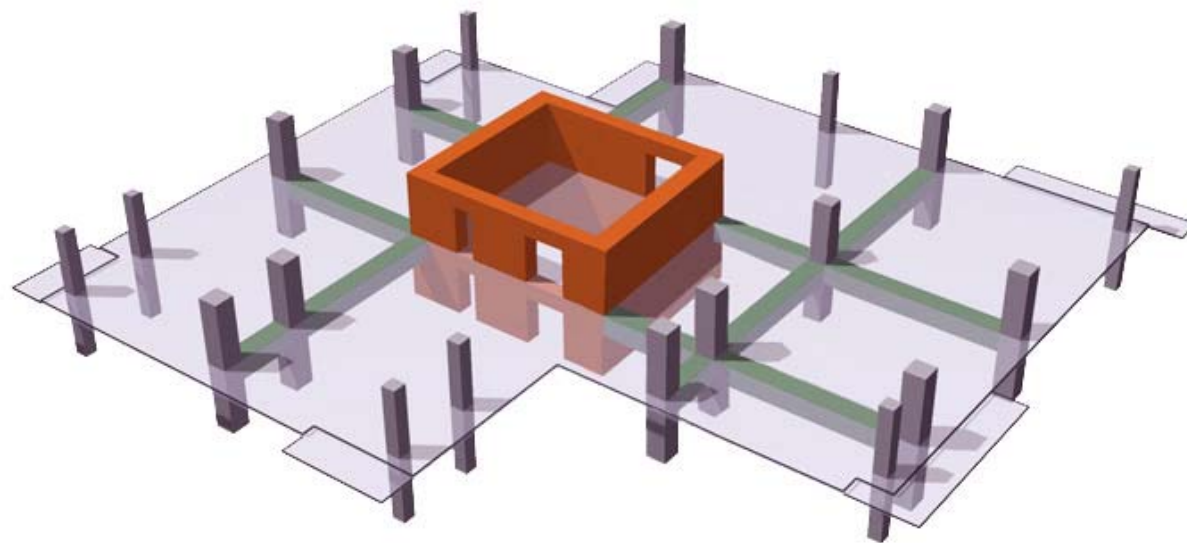


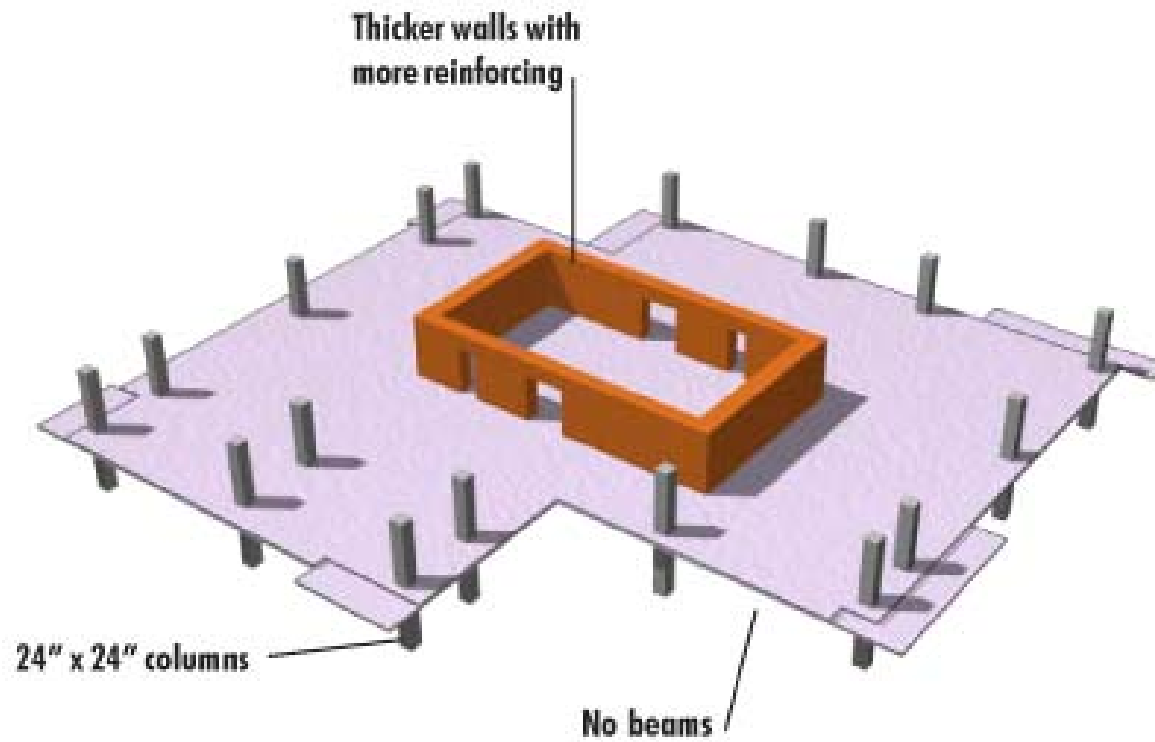




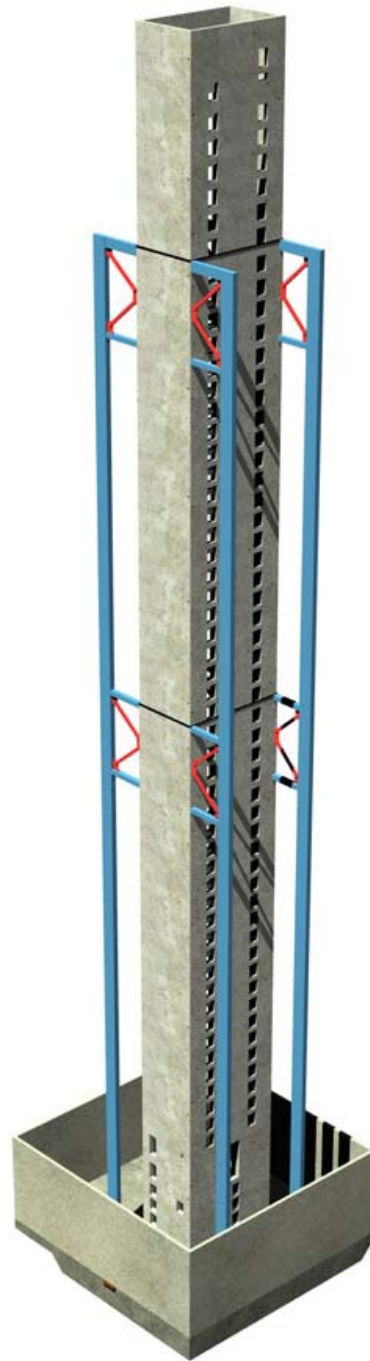


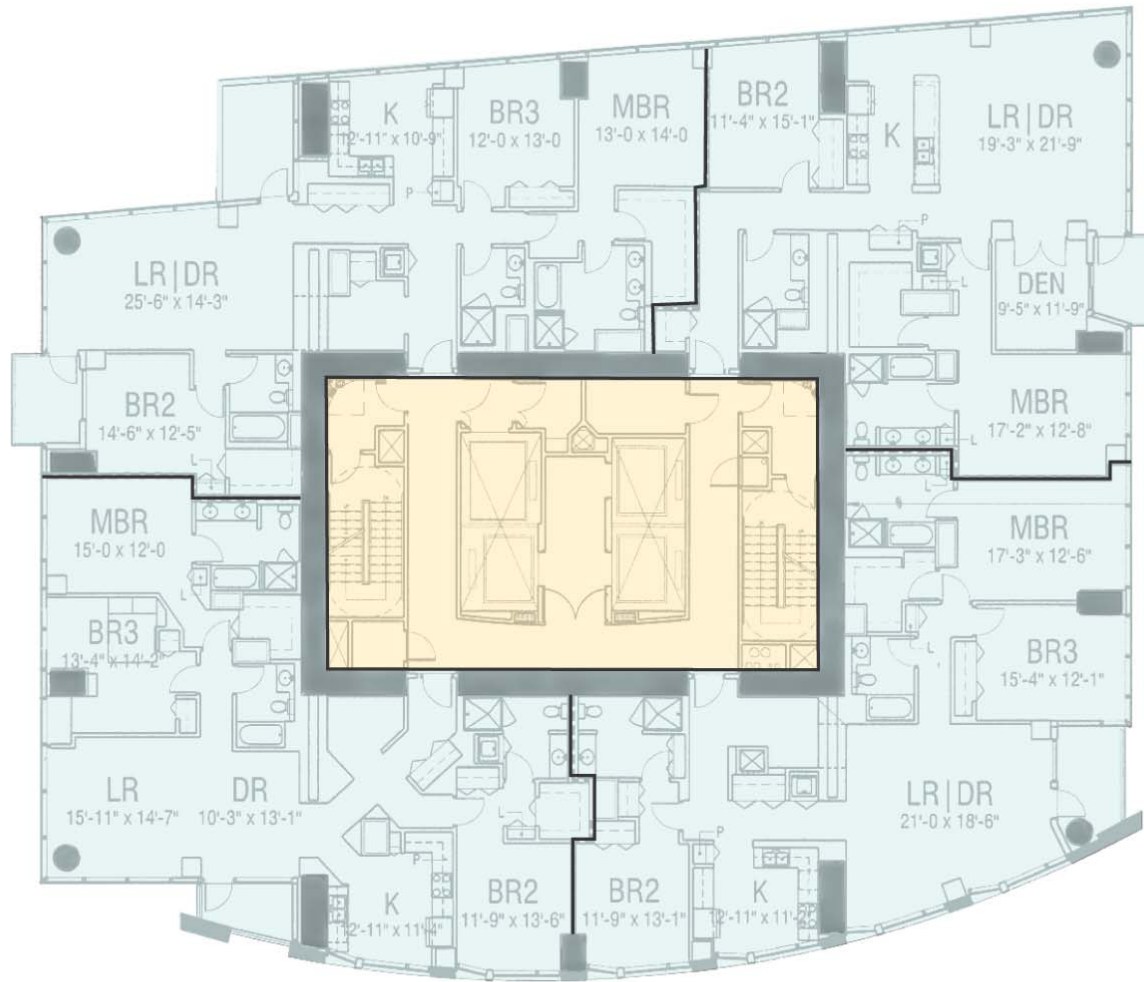






Earthquake Design Level	Earthquake Performance Level			
		Fully Operational	Operational	Life Safe
Frequent (43 years)	Basic Objective	Unacceptable	Unacceptable	Unacceptable
Occasional (72 years)	Essential/Hazardous Objective	Basic Objective	Unacceptable	Unacceptable
Rare (475 years)	Safety Critical Objective	Essential/Hazardous Objective	Basic Objective	Unacceptable
Very Rare (975 years)	Not Feasible	Safety Critical Objective	Essential/Hazardous Objective	Basic Objective

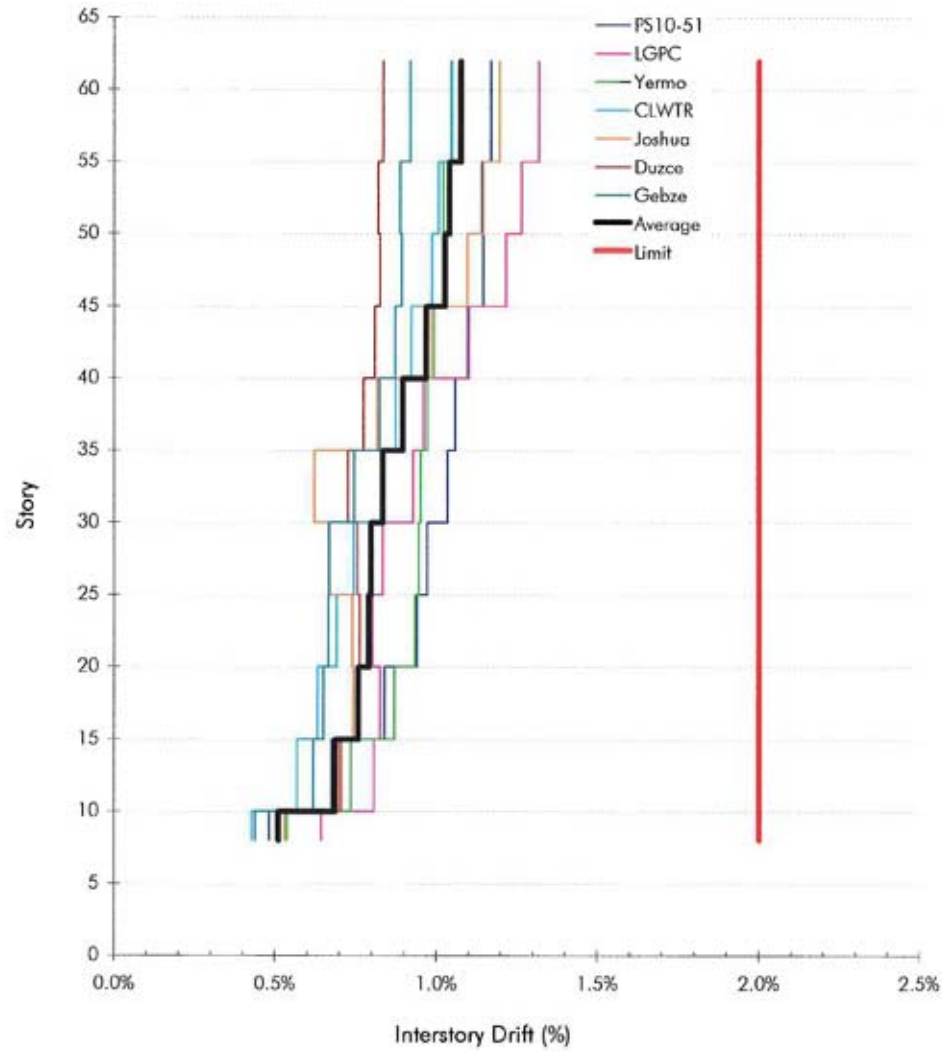




Issues

- R
- Drift Limitations
- Shear Demands
- Ground Motion Selection
- Higher Mode Effects
- Diaphragms
- Foundations
- Detailing

**One Rincon Hill Tower Core NLTHA
LCI (High Gravity) Interstory Drift
[Y-Direction, NW corner]**



**One Rincon Hill Tower Core NLTHA
LCI (High Gravity) Coupling Beam Chord Rotation
[Coupling Beam 2]**

